

R & R CAR AND TRUCK CENTER
1657 Rohrerstown Road, Lancaster, PA



REEFERS, REEFERS
Many Makes And Models To Choose From 16 & 18
Starting At \$8,500

1982 IVECO Z110, 6 Cyl Diesel 5 Spd 9 995 GVW 12 Hi Cube Van Low Miles Insp Clean
Only \$2,995



1987 FORD F-600
6.6 Liter 5 & 2 P/S Hyd No CDL Needed 21 200 20 Flat Bed
Call For Details

1986 Mack CS250P, 6 Cyl Turbo Diesel 10 Spd P/S A/B 30 700 GVW 18 Van with VG New Insp will separate
Priced To Sell

Call Ray Leed 717-560-4901



1994 GMC Silverado

Crew Cab, 4x4, 6.5 Turbo, 5 Speed., Air Tilt, Cruise, PW, PL, 151,000 Mi

reduced to **\$15,900**

Conestoga Building

(717) 354-2613

John E. Kreider

Auto Body & Sales

Specializing in Rebuildables!!

Fully Equipped Repair Facility

5348 Beagle Rd. E-town, PA 17022

(717) 361-9296



1988 Chevy K-30 4x4
AT AC, 6.2 Turbo Diesel, 117 000 mi Runs Good. Could Use a Paint job
\$7,950



1994 Ford Taurus GL
3.0 V6, AT, AC, Loaded, 86,000 Mi. Very Clean Car in Excellent Shape. Good Title, Ready To Go
\$7,295



1994 Ford Ranger XLT Super Cab
4 Cyl 5 Sp 29 000 Mi Rolled, Runs & Drives
\$2,250



1994 Ford Aerostar
Extended 3.0L V6, AT, AC, Loaded 89 442 Mi, Right Front Damage Parts Available To Fix
\$2,700

Warehouse Direct To Your Door!

Free UPS Over \$35



Trailer Hitches



Ball Mounts

\$12.95

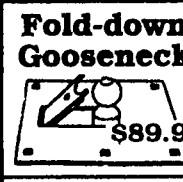


Brake Controls

\$59.95



"PLUG-IN" Simple Wiring Hook



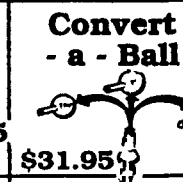
Fold-down Gooseneck

\$89.95



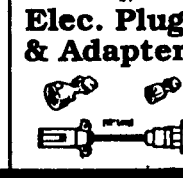
Pintle Hooks

5-50 Tons



Convert - a - Ball

\$31.95

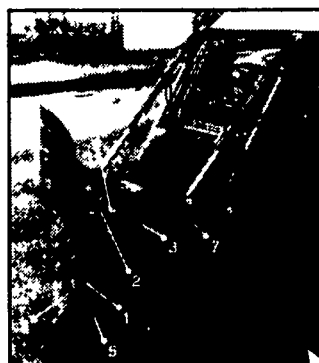


Elec. Plugs & Adapters

WEAVER DISTRIBUTING 1-800-WEAVER-D
RR2 Fredericksburg, PA 17026

Free Catalog
1-800-932-8373

Blade Standard Features:



1. 10 gauge curved moldboard for the most efficient snow removal.
2. Adjustable spring trip for operator and equipment protection.
3. Manual or variable hydraulic angle change.
4. Quickly reversible steel cutting edge (optional rubber squeegee cutting edge).
5. Rotating type adjustable skid shoes.
6. Power angle cylinders utilize existent loader valve (most models).
7. Blade mounts close to loader arms for added control.

4 PIN DETACHMENT 5 MINUTES MAX!!

Easy Hookup to the front loader 5' to 10'

Plow Package starting at

\$950.00

WANT DEALERS Lancaster Harrisburg & Other Parts of PA



ROCK SPRING HARDWARE

in CECIL COUNTY • 3 Miles North Of Conowingo
1320 Rock Springs Rd. (Rt. 222) • RISING SUN
Hours: Mon.-Sat 8 am-8 pm, Sun 8-6 pm
410-658-5978 1-800-858-0288

PHONE 717-274-2000

Toll Free 1-800-650-1420

RTE. 422 WEST LEBANON, PA

(Across From Lebanon Valley Mall)

CAR VILLAGE

HEAVY DUTY TRUCKS

Business Hours
Mon.-Fri. 9-9
Sat. 9-4

THIS IS ONLY A PORTION OF OUR HUGE INVENTORY



CENTURION CONVERSION
94 FORD F250 SUPER CAB
4x4 Beautiful, 7.3 Turbo Diesel, AT, A/C, Aluminum Wheels, 42,000 Miles, 4 10 Gears, Great Tow Machine



4X4 CUMMINS DIESEL
89 DODGE 250
Heavy Duty 3/4 Ton, Auto Vinyl Floor Nothing Fancy, Nice Farm Truck, Runs Great



4X4 SUPER CAB DUALY
97 CHEVY K3500
Super Great Towing Machine, High Output 6.5 Turbo Diesel, Auto, Limited Slip 4 10 Gear, Factory H D, Trailer Pkg, Only 5,000 Miles, All New Truck Warranty



ALUMINUM CUBE VAN 95 FORD E-350
14 Ft Body, Extra Extra Clean Inside & Out, Only 55,000 Miles, V8, Auto, A/C, Pull Out Ramp



85 FORD F350 GREAT FARM TRUCK
4 Wheel Drive Flatbed Dump, Diesel Power, 4sp Trans, Dual Rear Wheel, Removable Stake Sides.



\$24,900 96 DODGE SLT LARAMIE
Cummins Turbo Diesel, AT 4 10 Gears, Fact Tow Pkg Only 26,000 Miles, Remaining New TK Warranty, Great Price On A Beautiful Truck



FARMERS DREAM 4 WHEEL DRIVE
93 FORD F350 FLATBED
Very Versatile, Many Uses Around Farm 7.3 Diesel, 5 Sp, 8 Ft Flatbed Gooseneck & Class 3 Hitch



DIESEL POWER 90 FORD F250 4x4
Reliable 7.3 Diesel, AT, A/C, Lock Out Hubs, Dual Tanks, Heavy Duty 3/4 Ton



5 SP DIESEL SUPER CAB
96 FORD F250 HEAVY DUTY
4 Wheel Drive, Powerstroke Turbo Diesel, H D 5 Sp, A/C, Only 15,000 Miles, A Hard To Find Truck



HEAVY DUTY 3/4 TON 4X4
95 FORD F250 XLT
Powerstroke Turbo Diesel, AT, A/C, Alum Wheels Extra Nice, Only 35,000 Miles.



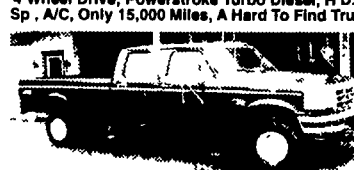
LIFTGATE STAKE BODY
95 CHEVY H D 3500
Save Your Back With Power Lift Tailgate 12 Ft Body, 6.5 Turbo Diesel, H D 5 Sp, Only 43,000 Miles, Will Sell As Chassis



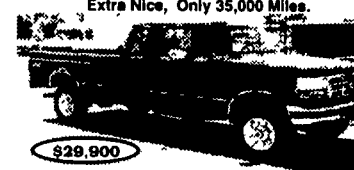
\$19,900
96 FORD F250 HEAVY DUTY
4 Wheel Drive, Like New, Only 7,000 Miles, 351 V8, Heavy Duty, 5sp, A/C, Dual Tanks, You Can't Beat It



4X4 DIESEL SUPER CAB 95 FORD F250 XLT
It's A Beauty, Very Strong Powerstroke Turbo Diesel, AT, A/C, 40/20/40 Seat, Aluminum Wheels, Heavy Duty 3/4 Ton



WORKING MAN'S CREW CAB
FORD F350 XL
4 Wheel Drive, Powerstroke Turbo Diesel, HD, 5 Sp, A/C, 4 10 Gears, Big Swing Out Mirrors



POWERSTROKE TURBO DIESEL
97 FORD F250 SUPER CAB XLT
4 Wheel Drive, Only 1,500 Miles, Auto, A/C, Captain Chairs, Aluminum Wheels
\$29,900



ONLY 9,000 MILES
95 FORD F250 SUPER CAB
4 Wheel Drive, Like Brand New, Powerstroke Turbo Diesel, AT, A/C, Loaded With Everything, Tow Pkg, Beautiful Two Tone



4x4 DIESEL SUBURBAN
94 CHEVY E2500
4x4, 6.5 Turbo Diesel, AT, Frit & Rear A/C, 3rd Seat, Barn Doors, Tow Pkg, Super Nice, 30,000 Miles, Only \$27,900



460 SUPER CAB 92 FORD HEAVY DUTY F250
4 Wheel Drive, Strong 460 I I AT, A/C, Capt. Chairs, Gooseneck Hitch, This Truck Will Definitely Pull Your Trailer, 59,000 Nice Miles



LOTS OF POWER 95 CHEVY K2500
Super Cab, 4 Wheel Drive, 454 V8, Powerhouse Auto, A/C, Hitch, Factory Tow Pkg, It Is Perfect, Only 17,000 Miles



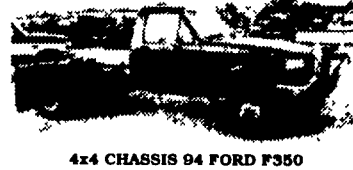
PERFECT 96 FORD F250 SUPER CAB 4 WHEEL DRIVE
Only 9,000 Miles, Powerstroke, Turbo Diesel, AT, Captain Chairs, Just Like Brand New, Only Lots Cheaper



90 FORD F250 SUPER CAB 4 WHEEL DRIVE
Nice Tk, V8, AT, AC Excellent Body & Paint



PULLING MACHINE 95 CHEVY 4X4 CREW CLUB DUALY
Gotta Be One Of The Nicest Anywhere, High Out 6.5 Turbo, Diesel, AT, Tow Pkg, Loaded, 24,000 Miles



4x4 CHASSIS 94 FORD F350
Sht. 137 WB, 60" C.A., 7.3 Diesel, H.D 5 Spd, Limited Slip, 4 10 Gears, 71,000 Original Miles



4 DOOR F250 4X4's
2 Available Powerstroke Turbo, Diesel, Tow Pkg's, Call For Details



5 SP DIESEL CREW CAB
94 FORD F350 XLT
Turbo Diesel Power, H D 5 Sp, A/C, Limited Slip 4 10 Gears, Extra Clean, Only 56,000 Miles