

'87 Chevy C20 Conversion Van, 305, auto, PS, PB, AM-FM cassette, CB, good condition. \$3,675. 717-733-2873

'87 Chevy Silverado 20 pickup truck, auto, 454, FI, 3/4 ton, only 56K, AC, PS, PB, tilt, AM/FM, dual tanks, newly inspected, clean, \$7900 Plus 35 other trucks STOUT AUTO SALES Reading, PA 1-800-482-3033

'87 Ford XLT Lariat F250, 2WD, super cab, 460 auto, PS, PB, PW, PDL, cruise, tilt, air, 60,000 original miles, excellent condition, \$8,975 717-733-2873

'89 Chevy 2500 Silverado Suburban, 9 pass, 350 auto, PS, PB, PW, PDL, cruise, tilt, dual air, towing package, 56,000 original one owner miles, excellent condition, \$10,500. 717-733-2873

'89 Chevy Blazer, full size, 4x4, loaded, low mileage, 6.2L diesel, rebuilt trans, new brakes, excellent condition Priced to sell... \$7995 215-723-8445

'89 Ford F350 w/12' Knapheide stake body, 460 EFI, 5 spd, PS, PB, 11,000 GVW, 90,000 one owner miles, dark blue, good condition, \$8,300. 717-733-2873

8'x24' tri-axle trailer \$300. (717)530-1496.

'90 Chevy S-10, 5-speed, 2WD, 80,000 miles, current inspection, runs excellent, \$3500. 717-753-3391

'90 Dodge 150 HD 1/2 ton pickup, 318 EFI, auto, PS, PB, AM-FM, blue, excellent condition, \$5,975 717-733-2873

**MACK PARTS FOR SALE.** Engines, blocks, heads & cranks, cabs, hoods & doors, trans, rears. ALL MACK PARTS REASONABLE PRICES MACK TRUCKS BOUGHT (complete or parts) 888-625-6485

'91 Ford XLT E150 club wagon, 7 passenger, 302 EFI, auto, PS, PB, PW, PDL, cruise, tilt, dual air, AM-FM cassette, 2 tone blue, privacy glass, new radials, one owner, excellent condition, \$8,900 717-733-2873

92 International 4600, 5th wheel, 7.3 diesel, 185,000 miles, sleeper, 5-speed, 2-speed, rear, new tires, brakes, clutch, head gasket, injectors Well cared for Excellent work truck, \$14,500 Call 610-286-7436

'93 Ford XL F150 4x4, 302 EFI, 5 spd, PS, PB, air, AM-FM cassette, 52,000 one owner miles, new radials, excellent condition, \$11,900. 717-733-2873

'95 Chevy Astro, extended cab, passenger van, 66K 717-445-4541

**E-TOWN DODGE**

1998 Quad Cab Club Cab, (4) In Stock 40 more coming in

(10) '97 Club Cabs, gas & diesel

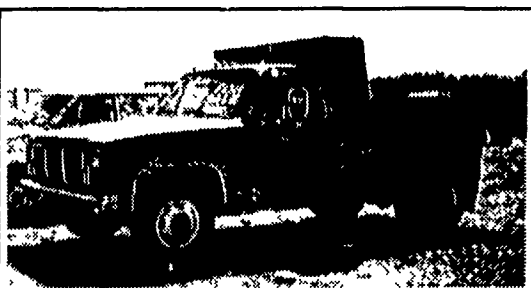
1995 Ford F350 Pickup, Single rear wheel, 15K original miles

1992 CHEVY C-20 2WD, Diesel, 54K

(5) New Style Dodge Pickups, used

(4) Durango's in stock

**ASK FOR MILTON HESS**  
Certified Truck Specialist  
717-367-6644  
717-653-6667  
Elizabethtown, PA



I'm completely refurbished from front to rear! The one way you can replace me is to buy new!

86 GMC w/ Thiele 8 1/2' Dump Bed

Phone 717-898-0683  
**CHARTER ENTERPRISES, LTD.**  
270 Hostetter Road, Manheim, Pa

**SPECIAL ON HEAVY SPEC'D NEW '96 TRUCK CALL NOW!!**

New 1996 Navistar Cab M11, 8LL trans 20 000#FA, 46 000# Hendrickson Walking Beam susp 216 of platform, 146" CT, Double frame, + Jake Brake, PTO 385/65/225 front floats Full warranties FET included Was \$84,500 **\$62,500** (717)733-0724 or (717) 733-8528

**YORK MACK YORK GMC TRUCK**

55 S FAYETTE ST.  
YORK, PA 17404-0833  
(717) 792-2636  
BRIAN SACKETT



87 IVECO 230T  
12' Stake Body w/Cylinder Gate, 16,900 GVW  
**\$1,950**



92 Ford E150 Cargo Vans 302 V-8, Gas, Auto, AC, PW&L  
**\$6,500**



85 Chevy - One Ton 12' Stake Body w/ Tuk-Away  
Lift Gate, Low Mileage  
**\$5,800**



70 Ford L800 Rollback 33,000 GVW, 391 HP, 5/2 Speed, 22' Grove Roll Back Bed w/Stabilizer & Tow Bar, 12,000 Lb Winch  
**\$8,950**

1984 Ford F800, 8.2 Diesel with new rebuilt 5-2 Speed, Air Brakes, 32,600# GVW, New Hoist with All Welded 16' Grain Body, 52" High Sides and Double Acting Tailgate with Grain Chute  
**\$18,600**  
**END OF SEASON - MUST GO - WILL CONSIDER ALL REASONABLE OFFERS**

**HOSTETLER**  
Truck Bodies & Trailers  
717-667-3921  
Milroy PA Located between Lewistown And State College on Rt 322 in PA

**FOR SALE STORED INSIDE**

**1975 PETERBILT TRI-AXLE;**  
359 Conventional; 350 Cummins; Roadranger 915; Jake; 16/44's; Turner Lift; 90% Rubber, (RED); New Double Frame; J&J Aluminum Box; 3-Way Tail Gate Bed-Excellent; Truck Good, Stored Inside  
**\$25,000 Or Best Offer**  
**(814) 237-0189**

**BOWERS USED CARS INC.**  
Route 30 West of Abbottstown, PA  
7015 York Rd. 717-624-7072

86 CHEVY 30 SERIES 12 Stake V 8 4 speed PS PB 67 000 miles Clean <b>\$6,995</b>	92 CADILLAC SEVILLE 4DR Fully Equipped One Owner <b>\$11,900</b>
78 CHEVY TRAILING SPECIAL 4X4 6 000 GVW 350 HP Auto PS PB AC Real Nice Truck <b>\$4,500</b>	89 CADILLAC SEDAN DeVILLE Fully Equipped Mint Cond All Service Records <b>\$7,995</b>
95 PLYMOUTH GRAND VOYAGER 8 Pass Fully Equip <b>\$12,900</b>	91 FORD EXPLORER XLT 4X4 V 8 Auto Fully Loaded <b>\$8,995</b>
93 FORD F250 XLT 4X4 8600 GVW Meyer Power Angle Snow Plow 351 V 8 Auto PS PB AC 99 000 Miles <b>\$11,900</b>	90 FORD F250 XLT LARIAT 351 V8 Fully Equip 76 000 Miles <b>\$9,500</b>
83 FORD F150 EXT. CAB 4X4 XLT 351 V 8 Fully Loaded One Owner <b>\$11,900</b>	82 25' LAYTON TRAILER Sleeps 9 Roof AC Fully Equip Full Awning Real Clean <b>\$2,500</b>

**HARD TO FIND TRUCKS!**

87 GMC 7000 w/18' Box

366 V-8, 5-Speed, PS, PB, AC 23,000 GVW, 99,000 Miles  
**\$6,290**

91 DODGE D150 LE 4x4

318 V-8, Auto, PS, PB, AC  
All Options, Bed Liner, One Owner, Like New  
**\$11,800**

**"THE TRUCK PEOPLE"**  
Over 30 Pre-owned Trucks In Stock!  
**BOYER MOTOR CO.**  
1065 S. State Street  
Ephrata, PA 17522  
717-738-1885 1-800-786-1835

PRE-OWNED CARS	PRE-OWNED TRUCKS	PRE-OWNED MPV's
'96 CHEVY BERETTA Z26 A/C, AUTO, AM/FM Cass, Stock #C97-106A	'95 CHEVY 2500 PICKUP TRUCK Cruise, A/C, AM/FM Cass, Stock #F97-87A	'96 CHEVY TAHOE 2 DR. SPORT A/C, Auto, AM/FM Cass, 4x4, Stock #C96-62A
'95 EAGLE SUMMIT DL 5 SPD, AM/FM, Stock #C95-117	'95 FORD RANGER XL 5 Spd, Stock #F97-237A	'94 CHEVY CONVERSION VAN 2-A/C, Auto, AM/FM Cass, Stock #P97-32A1
'95 FORD PROBE A/C, 5 Spd, AM/FM Cass, Stock #C97-47A	'94 FORD F-150 4x4, XLT A/C, 5 Spd, AM/FM, Stock #F97-213A	'94 CHEVY S-10 BLAZER, TAHOE A/C, Auto, AM/FM Cass, Stock #P97-93
'94 FORD MUSTANG CPE. 5-Spd, A/C, AM/FM Cass Stock #F97-179A	'94 FORD RANGER S/CAB XLT 4x4, A/C, 5 Spd, AM/FM Cass, Stock #P97-23	'95 FORD EXPLORER SPORT A/C, Auto, AM/FM Cass, Stock #F97-137A
'95 LINCOLN CONTINENTAL A/C, Auto, AM/FM Cass, Cruise, Stock #P97-22	'94 FORD F150 4x4 XLT A/C, Auto, AM/FM, Stock #F97-251A	'94 FORD AEROSTAR XL A/C, Auto, AM/FM Cass Stock #F36-218
'95 MERCURY SABLE GS SDN. A/C, Auto, AM/FM Cass, Stock #F97-171A	'94 FORD F350 DUMP 5 Spd., Stock #P97-59	'95 GEO TRACKER 4X4 LSI A/C, Auto, AM/FM Cass Stock #F97-42A
'94 FORD TEMPO GL SDN. Auto, AM/FM, Stock #F97-195A	'89 FORD F-150 4x4 S/CAB A/C, 5 Spd., AM/FM, Stock #97-50	'92 ISUZU RODEO SPORT A/C, 5- Spd, 4x4, CD Player, Stock #F98-22A
'92 FORD ESCORT GT CPE. A/C, 5-Spd, AM/FM, Stock #L96-18A	'88 FORD F-150 S/CAB, 4x4 XLT, AC, Auto, AM/FM Stock #F97-81A	'94 JEEP GR. CHEROKEE LAREDO A/C, 5 Spd, Leather Interior, AM/FM Cass., Stock #97-105A
'97 MERCURY COUGAR 30th Anniversary, Auto, AM/FM Cass, AC, Black #F97-220A	'94 NISSAN XE 4x4 A/C, 5-Spd., AM/FM Cass., Stock #F96-143A	'89 JEEP WRANGLER ISLANDER A/C, Hardtop, Auto, AM/FM Cass, Stock #P97-49
'94 PLYMOUTH SUNDANCE A/C, Auto, AM/FM, Stock #F97-153B	'92 TOYOTA S/CAB, 4X4 A/C, Auto, AM/FM, Stock #C96-94A2	'95 FORD WINDSTAR GL Dual A/C, A/D/C, AM/FM Cass., Stock #P97-28

**ENGLE-RISSINGER AUTO GROUP**  
Midway Between Halifax And Millersburg • 717-896-3421 • 1-800-242-8075  
HOURS: Monday-Friday 8:30 AM - 8:30 PM; Saturday 8:30 AM - 3:00 PM