

Aberdeen Sales Company, Inc.

Complete Auction & Appraisal Service
Churchville, Md.

Report Supplied by Auction
Wednesday, Oct. 15, 1997

SLAUGHTER STEERS: 1.00 HIGHER. CHOICE 2-4 1100-1400 LBS. 66.50-70.00; SELECT & LOW CHOICE 1000-1500 LBS. 59.00-65.00; HOL. STEERS HI CHOICE & PRIME 1250-1400 LBS. 59.00-63.00; CHOICE 1200-1500 LBS. 57.00-61.00; SELECT, ALL WEIGHTS 51.00-55.00.

SLAUGHTER HEIFERS: 1.00 HIGHER. CHOICE & PRIME 950-1300 LBS. 64.00-67.00; SELECT ALL WEIGHTS 900-1400 LBS. 57.00-61.00.

COWS: MARKET 1.00 HIGHER. BRK. UT. & COMM. 2-4 BULK 37.00-41.00; HI DRESSING 41.00-45.00; CUTTER & BON. UT. 35.00-39.00; HI DRESSING 39.00-41.00; CANNER & CUTTERS 29.00-35.00; LOW DRESSING 22.00-29.00; CRIPPLED, SLOW AND SICK .10-.25.

BULLS: MARKET 1.00 HIGHER. ALL WEIGHTS 1100-1900 LBS. 43.00-51.00. VEAL CALVES: MARKET STEADY. CHOICE AND PRIME 200-400 LBS. 71.00-84.00; HI GOOD AND LOW CHOICE ALL WEIGHTS 53.00-69.00.

FARM CALVES: MARKET 5.00 HIGHER. HOL. BULLS 100-125 LBS. 87.00-103.00; HOL. BULLS 85-95 LBS. 42.00-79.00; HOL. HEIFER CALVES 100-120 LBS. 93.00-118.00; SMALL FRAME 70-105 LBS. 40.00-69.00; SLAUGHTER CALVES ALL WEIGHTS 15.00-32.00.

FEEDER CATTLE: MARKET

STEADY. BULLS & STEERS 400-900 LBS. 53.00-86.00; HEIFERS 300-700 LBS. 47.00-74.00.

LAMBS: MARKET .10 HIGHER. CHOICE & PRIME 90-110 LBS. 79.00-94.00; LIGHTER LAMBS 90.00-122.00; EWES - HEAVY 27.00-36.00, LIGHT 35.00-50.00.

GOATS: MARKET STEADY. SMALL 25.00-35.00; MEDIUM 40.00-70.00; LARGE 70.00-130.00.

HOGS: MARKET 3.00 LOWER. 210-250 LBS. 45.00-47.00; 255-300 LBS. 42.00-46.00; SOWS - HEAVY 38.00-43.00; SOWS - LIGHT 34.00-39.00; BOARS ALL WEIGHTS 33.00-39.00.

Carlisle Livestock

Carlisle, Pa.
October 14, 1997

SLAUGHTER CATTLE: STEERS SELECT 58.00-62.00; HEIFERS COUPLE SELECT 900-1200 LBS. 52.00-58.00; COWS, ACTIVE/ BREAKING UTILITY AND COMMERCIAL 38.00-44.00, CUTTER AND BONING UTILITY 34.00-39.00, CANNER AND LOW CUTTER 28.75-33.75, BIG MIDDLE 33.00-37.50; SHELLY 28.50 AND DOWN.

BULLS: 1 AT 1015 LBS. 46.50. FEEDER CATTLE: FEEDER STEERS MED. AND LARGE #1 400-850 LBS. 60.00-70.00; HOLSTEINS/DAIRY TYPES 34.00-56.00; FEEDER HEIFERS MED. AND LARGE #1 400-850 LBS. 55.00-65.00; MED. AND LARGE #2 400-850 LBS. 47.00-51.00; FEEDER BULLS MED. AND LRGE. #1 COUPLE 600-700 LBS. 56.00-61.00. CALVES: VEALERS STANDARD

AND GOOD 30.00-55.00; CALVES RETURNING TO THE FARM, STRONG DEMAND! HOLSTEIN BULLS #1 95-125 LBS. 90.00-100.00; #2 81.00-89.00; #2 90-145 LBS. 60.00-80.00; HOLSTEIN HEIFERS #1 80-110 LBS. 62.50-109.00; BEEF X BULLS TO 67.50. SWINE: HOGS US#1-3 1 LOT 320 LBS. 40.50; SOWS US#1-3 300-550 LBS. 34.50-39.25; BOARS 34.00; FEEDER PIGS BY THE HEAD, 15-20 LBS. 14.00-18.00; 30-90 LBS. 31.00-50.00.

GOATS: BY THE HEAD, LARGE NANNIES AND BILLIES 60.00-132.50; FANCY KIDS 60.00-80.00; FLESHY KIDS 40.00-57.50; SMALL/THIN KIDS 17.00-35.00.

LAMBS: GOOD 60-130 LBS. 73.00-95.00. SHEEP: ALL WEIGHTS 21.00-23.00- SALE EVERY TUES. AT 2 P.M. FOR PREMIUM PRICES, USE THESE PENS. NEXT SPECIAL FEEDER CATTLE SALE TUES., OCT. 21. SALE TIME APPROX. 7:30 P.M.

NEXT SPECIAL FED CATTLE SALE TUES., OCT. 21. PEN LOTS OF CATTLE WILL BE SOLD IN ORDER RECEIVED.

NEXT STATE GRADED FEEDER PIG SALE FRIDAY, OCT. 24. RECEIVING 6-11 A.M. SALE TIME 1:30 P.M. HATFIELD'S TOP PRICE FOR CASH HOGS ON WED., OCT. 15 WAS 46.00.

Friend's

Stockyard Inc.

Accident, Md. 21520

Report Supplied by Auction
October 13, 1997

STOCK BULLS AND STEERS (200-500 LBS.) 57.00-82.00.

STOCK HEIFERS: 40.00-71.00.

SLAUGHTER STEERS: GOOD TO

Frederick Livestock Auction

Frederick, Md.
October 13, 1997

Report Supplied by Auction

SLAUGHTER COWS: 97 HEAD, STEADY PRICES. UTILITY 36.00-40.00; HIGH DRESSING TO 41.75; CANNERS 31.00-35.00; SHELLY 30.00 DOWN.

BULLS: 4 HEAD. YG#1 43.50-44.75; YG#2 TO 41.50.

FED STEERS: HIGH CHOICE 1200-1450 LBS. 65.00-67.00; LOW CHOICE 1000-1140 LBS. 57.00-62.50; CHOICE HOLSTEINS 1600-1800 LBS. 53.50-55.50.

FED HEIFERS: LOW CHOICE HOLSTEINS 1150-1400 LBS. 50.00-55.00.

VEAL CALVES: 238 HEAD. CULLS 85-110 LBS. 27.00-34.00; 60-80 LBS. 20.00-30.00; WEAK/ROUGH 19.00 DOWN.

FARM CALVES: HOLSTEIN BULLS #1 100-120 LBS. 75.00-90.00; 90-95 LBS. 65.00-87.00; #2 85-90 LBS. 35.00-45.00; HOLSTEIN HEIFERS #1 90-120 LBS. 125.00-150.00; #2 80-100 LBS. 55.00-110.00; BEEF X HEIFERS TO 55.00.

STOCK CATTLE: STEERS FEW 300 LBS. TO 69.00; FEW 600 LB. HEREFORDS 60.00.

HEIFERS: 300-500 LBS. 50.00-60.00. BULLS: 1 300 LB. AT 71.00.

LAMBS: FEW CHOICE 100-125 LBS. 70.00-78.00.

GOATS: MED. 35.00-65.00.

BUTCHER HOGS: 50 HEAD. US#1-2 240-260 LBS. 48.50; 215-260 LBS. #1&3 220-250 LBS. 45.00-47.00; #2&3 275-315 LBS. 40.00-45.50.

FARM SHOW LAMBS AVAILABLE

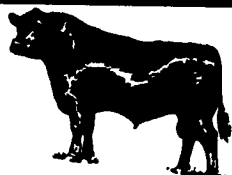
Call Now for Good Selection

Robert Dinsmore



Club Lambs

301-371-4483 5842 Broad Run Road
800-331-9122 Jefferson, Maryland 21755



WALTER M. DUNLAP & SONS

Lancaster Stockyard 717-397-5136
1147 Lititz Pike, Lancaster, PA

Special Fall

FEEDER CATTLE SALE

Fridays, Oct. 24 & Nov. 14-Noon

Lancaster Stockyards

Fresh from the FARM - we have lined up Load Lot Consignments featured for these SPECIAL SALE DATES

Regular Feeder Cattle Sales will be held every Friday thru Nov. 21

—CONSIGNMENTS WELCOME—

EXTENDED PARTS DEPT. HOURS EFFECTIVE SEPT. 2 THRU OCT. 31

To Better Serve You During The Busy Harvest Season

MON. ★ TUES. ★ THURS. ★ FRI. 7:00 AM -8:00 PM
WED. 7:00 AM-5:00 PM; SAT. 7:00 AM - 12 NOON

BINKLEY-HURST BROS. INC.

133 Rothsville Station Rd.
Lititz, PA 17543
(717) 626-4705
1-800-414-4705



FAX 717-626-0996

If you're planning to get bigger...



...we can lend a hand. And some cash.

Before you turn over the first shovelful of dirt for an expansion project, I hope you'll put pencil to paper to figure out how it's going to benefit your farm business. And when you get to the financing part of your planning process, I hope you'll give me a call. At ENB, we've been helping farmers grow their businesses for the past 116 years



Bob Zook VP Ag Lending

For more ag lending information call 717-733-2911



Ephrata National Bank

Serving farmers since 1881



MEMBER FDIC

Baldor • Leeson • Choretime • Doerr • G.E. • Browning • Makita • Sq D

SLAYMAKER ELECTRIC MOTOR & SUPPLY CO.

Providing Quality products and services to Industry, Farm and Home, at reasonable prices

AUTHORIZED DISTRIBUTOR • SALES & SERVICE



Hydraulic Hose Assemblies
• Hi-Pressure
• Air Hose
• Power Washer



REPAIR and REBUILD

• Motors • Welders
• Hoists • Generators
• Harvestore Units
• Control Panels
• Pressure Washers

- In Stock -

• V-Belts • Makita Tools
• Roller Chain • Pumps
• Motors • Controls
• Phase Converters
• Pressure Washers
And Much More!

We Ship Daily.



24 Hour Emergency Service Shop/On-Site Available

146 Penn St. Washington Boro, Pa. 17582
Ph# (717)684-5050 or 684-3940

Milwaukee • B & D • Lincoln • Reliance • Myers • Solar • ABS • C/M

Flygt • Ingersoll Rand • Dayton • Aeroquip • Fincor • Potter-Brumfield • Proto • OTC • Morse • Helicoil • Fluke

Furnas • Maska • Universal • Century • Reliat • White Rodgers • Milton • Pirelli • Carol • Speedaire