

Four States Livestock

Hagerstown, Md
October 8, 1997

Report supplied by Auction

SLAUGHTER COWS: 98 HEAD, ACTIVE BIDDING! 1.00-2.00 HIGHER. UTILITY 36.50-40.50; HIGH DRESSING 41.00-43.25; CANNERS 31.00-36.00; SHELLY 31.00 DOWN.

BULLS: 8 HEAD, 2.00 HIGHER! YG#1 44.00-48.50; 1 HIGH DRESSING 1960 LBS. AT 54.00.

FED STEERS: FEW OFFERED. HIGH CHOICE AND PRIME 1100-1400 LBS. 64.00-65.50; HIGH CHOICE 1050-1300 LBS. 63.00-64.00; SELECT 54.00-57.00.

VEAL CALVES: 111 HEAD. LOW CHOICE 300-350 LBS. TO 68.00; CULLS 85-110 LBS. 28.00-35.00; 60-80 LBS. 20.00-28.00; WEAK/ROUGH/THIN 19.00 DOWN.

FARM CALVES: HOLSTEIN BULLS 10.00 HIGHER! #1 95-120 LBS. 75.00-90.00; #2 40.00-70.00, 85-95 LBS. 35.00-60.00; HOLSTEIN HEIFERS FEW #1 95-120 LBS. TO 125.00; 80-90 LBS. TO 97.00; BEEF X BULLS TO 80.00, HEIFERS TO 67.00.

BUTCHER HOGS: FEW OFFERED. US#1-3 215 LBS. AT 46.00; FEW 375-400 LBS. TO 38.00.

SOWS: 300-500 LBS. 35.00-38.00; 500-600 LBS. TO 39.00.

STOCK CATTLE: 350 HEAD,

STEADY PRICES. STEERS MED. AND LARGE FRAME 200-400 LBS. 65.00-81.00; 400-600 LBS. 65.00-79.00, 1 AT 84.00; 600-800 LBS. 60.00-71.00; 800-900 LBS. 54.00-67.00.

HEIFERS: MED. AND LARGE FRAME 300-500 LBS. 60.00-72.50; 500-700 LBS. 58.00-67.00; 700-900 LBS. 54.00-64.00.

BULLS: MED. AND LARGE FRAME 200-400 LBS. 70.00-78.00; 400-600 LBS. 60.00-72.00; 600-800 LBS. 50.00-60.00; 800-900 LBS. 45.00-55.00; 900-1075 LBS. 46.00-52.00.

DAIRY REPLACEMENTS, LARGE SPRINGERS 750.00-950.00, 1 AT 1035.00; MED. FRESH AND SPRINGING 600.00-1175.00; 1 REG. HOLSTEIN BULL AT 1020.00; SMALL AND MED. HOLSTEIN HEIFERS 175.00-400.00.

SHEEP: 30.00-46.00.

LAMBS: 50 HEAD. CHOICE 95-120 LBS. TO 78.00; 125-140 LBS. 65.00-75.00; 60-85 LBS. 94.00-108.00.

GOATS: MED. 64.00-76.00.

PIGS AND SHOATS: 30 HEAD. BY THE HEAD, 30-35 LBS. 19.00-25.00; 40-60 LBS. TO 30.00.

NEXT WED. SPECIAL DAIRY CATTLE SALE, SPRINGERS, FRESH XOWS, SHORBRED AND OPEN HEIFERS, SERVICE BULLS, 7:15 P.M.

Greencastle Livestock

Greencastle, Pa.
Oct. 6, 1997

CATTLE 519...PDA...SUPPLY INCLUDED 121 SLAUGHTER STEERS AND HEIFERS, 237 SLAUGHTER COWS, 14 BULLS AND 147 FEEDER CATTLE. COMPARED WITH LAST MONDAY'S SALE...SLAUGHTER STEERS, HEIFERS AND BULLS STEADY.

SLAUGHTER STEERS, ONE HIGH CHOICE AND PRIME 1230 LBS. AT 69.50, CHOICE 1205-1395 LBS. 63.50-66.25, SELECT 56.50-63.75; STANDARD 47.00-56.25.

HOLSTEINS: FEW HIGH CHOICE AND PRIME 1370-1510 LBS. 60.00-61.25, FEW CHOICE 1315-1595 LBS. 58.25-59.50, FEW SELECT 52.00-55.00, FEW STANDARD 41.75-47.00.

HEIFERS: CHOICE 1075-1230 LBS. 63.50-66.75, SELECT 57.75-63.50, FEW STANDARD 43.00-53.25.

COWS: FEW EARLY SALES BREAKING UTILITY AND COMMERCIAL 37.00-41.75, CUTTER AND BONING UTILITY AND COMMERCIAL 32.00-38.00, CANNER AND LOW CUTTER 25.00-32.00. SHELLS DOWN TO

15.50.

BULLS: YG#1 1250-1880 LBS. 43.50-49.00, FEW #2 1120-1580 LBS. 37.75-43.25.

FEEDER CATTLE: STEERS MED. AND LARGE FRAME #1 220-395 LBS. 62.00-77.00, 425-600 LBS. 69.00-80.00, 650-915 LBS. 59.00-69.00, MED. FRAME #2 300-600 LBS. 51.00-65.50; HEIFERS MED. FRAME #1 200-375 LBS. 57.00-73.50, 400-670 LBS. 56.00-69.00, LARGE FRAME #2 400-510 LBS. 72.00-75.50; MED. FRAME #2 225-385 LBS. 42.00-47.00, 650-750 LBS. 49.00-60.00; BULLS MED. AND LARGE FRAME #1 200-400 LBS. 61.00-73.00, 410-610 LBS. 60.00-67.50, MED. AND LARGE FRAME #2 320-775 LBS. 47.00-56.00.

CALVES: 441...VEALERS STANDARD AND GOOD 70-95 LBS. 23.00-32.00, UTILITY 55-70 LBS. 9.00-21.00.

FARM CALVES: HOLSTEIN BULLS 7.00-10.00 HIGHER...#1 HOLSTEIN BULLS 90-125 LBS. 60.00-90.00 WITH A COUPLE AT 55.00; #2 80-115 LBS. 29.00-51.00; #1 HOLSTEIN HEIFERS 90-120 LBS. 70.00-150.00, #2 60-100 LBS. 31.00-50.00.

BEEF X BULLS AND HEIFERS 75-120 LBS. 34.00-60.00.

HOGS: 22...SOWS US#1-3 325-495 LBS. 38.50-42.00, 500-600 LBS. 39.00-43.50.

FEEDER PIGS: 25...SLAUGHTER, UTILITY 80-100 LBS. 45.00-49.00 PER CWT.

SHEEP: 100...SLAUGHTER LAMBS CHOICE 45-65 LBS. 90.00-110.00, ONE AT 122.50, 70-85 LBS. 83.00-97.00, 90-125 LBS. 70.00-79.00, GOOD AND CHOICE 45-65 LBS. 72.50-85.00.

SLAUGHTER SHEEP: FEW 27.00-44.00.

Morrison Cove Livestock

Martinsburg, Pa.
October 6, 1997

Report supplied by auction

CATTLE 200. STEERS CHOICE 63.50-67.35; GOOD 60.00-63.50.

HEIFERS: CHOICE 62.50-66.50; GOOD 57.50-62.00.

COWS: UTILITY & COMMERCIAL 33.00-41.00; CANNER & LOW CUTTER 18.00-32.00.

BULLOCKS: GOOD & CHOICE 43.00-51.00.

BULLS: YIELD GRADE NO. 1 36.00-45.00.

FEEDER CATTLE. STEERS 55.00-68.00, BULLS 53.00-65.00; HEIFERS 44.00-62.00.

CALVES 129. PRIME, NO MKT. TEST; CHOICE 63.00-74.00; GOOD 54.00-61.00; STANDARD 15.00-35.00; HOLSTEIN BULLS 90-130 LBS. 45.00-85.00; HOLSTEIN HEIFERS 90-130 LBS. 50.00-110.00.

HOGS: 188. US NO. 1-2 50.00-51.00; US NO. 1-3 49.00-50.00.

SOWS: US NO. 1-3 35.00-45.00

BOARS: 35.00-38.00.

FEEDER PIGS: 89 HEAD. US#1&3 20-50 LBS. 14.00-37.00.

SHEEP: 33 HEAD. CHOICE LAMBS 70.00-90.00; GOOD LAMBS 65.00-70.00; SLAUGHTER EWES 25.00-35.00.

GOATS: 16.00-80.00.

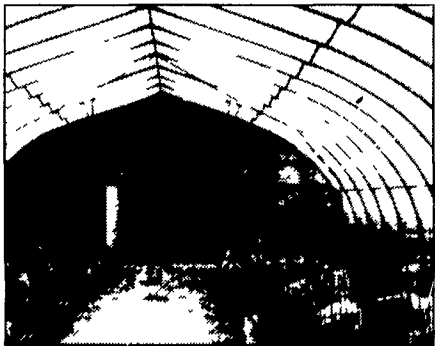
13 LOADS OF HAY. ALFALFA 167.50; GRASS 112.50-132.50; TIMOTHY 91.00-115.00; MIXED HAY 60.00-125.00; STRAW 92.00; WOOD 30.00 LOAD.

Greenhouse Buildings

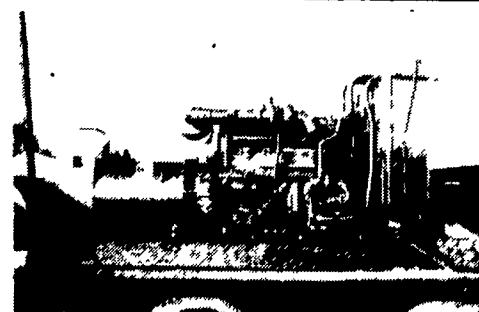
"Poly-Covered Engineered Structures"

- ◆ Calf & Heifer Facilities
- ◆ Freestall Barns
- ◆ Machine Sheds
- ◆ Round Bale Storage Units

Complete packages including erection



POTOMAC VALLEY SUPPLY
(301) 223-6877
Mon - Fri. 7:30 - 5:00 ask for Bob



GENERATORS

Sales ★ Service ★ Rentals
* Complete Generator Systems
* PTO * Portables * 2-1600 KW
"We Service It If You Have It
And Sell It If You Need It"

34 W. Mohler Church Rd.
Ephrata, PA 17522

Tel: 717-738-0300
Fax: 717-738-4329



- MARKET HOGS
- BOARS
- SOWS
- CULL PIGS

GOOD'S LIVESTOCK, INC.

- No DISCOUNTS FOR HOG COLOR
- No COMMISSION
- PROMPT CASH PAYMENT

Monday 6:30-11:00 A.M.
Friday 6:30-10:00 A.M.



Route 897 • 1 Mile North of Fivepointville, Denver, Pa
(717) 445-5776 • Fax (717) 445-6963

HOOPER

THREE LOCATIONS
The Saving Place

- C.B. HOOPER & SON, INC. • Intercourse, PA 717-768-8231
- HOOPER EQUIPMENT INC. • Middletown, DE 302-378-9555
- C.B. HOOPER & SON, INC. • McAlisterville, PA 717-463-2191

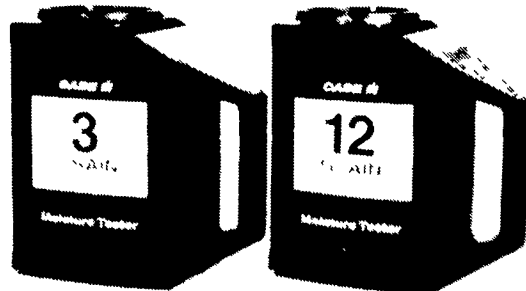
3 Grain and 12 Grain Moisture Testers

3 Grain Moisture Tester - U.S. Version
B91256 \$179.77

Gives instant, accurate, direct readouts for corn, wheat, and soybeans and calibration charts for most other grains.

12 Grain Moisture Tester - U.S. Version
B93372 \$209.74

Gives instant, accurate, direct moisture reading for 12 of the most commonly produced and traded grains. The Case IH 12 Grain Moisture Tester's lightweight, battery-powered and "take it anywhere" features make it a very convenient tester in the field.



YOU STAY PUT



Pick Up Your Phone And Place Your Parts Order With Us

WE SHIP PARTS DAILY

Via FED. EXP. - UPS - PPSH - BUS - AIR FREIGHT, ETC.

HOURS

Mon.-Fri. 7 AM-5PM; Sat.: 7 AM-Noon

CALL US...

It Could Be We Have It



Authorized UPS Station



LEESPORT, BERKS COUNTY, PA 19533 (610)926-1307

LIVESTOCK AUCTION

EVERY WEDNESDAY
1:00 PM



FARMERS MARKET 9:00 AM to 8:00 PM
FLEA MARKET 7:00 AM til ??

Serving Eastern Pennsylvania for 50 years

Bill Weist & Woody Weist, Managers