

Hough Has Banner Day

(Continued from Page B15)

The results of the show follow: Centre County Open Class Dairy Show Results

AYRSHIRE

Fall Calf- 1 Buck Gates
Junior Champion- Buck Gates
Senior 3-Year-Old- 1 Charles Lner
Senior Champion- Charles Lner
Grand Champion- Charles Lner
Reserve Grand Champion- Buck Gates

BROWN SWISS

Winter Calf- 1 Keri Connelly
Fall Calf- 1 Tammi Deibler
Summer Yearling- 1 Charles Lner
Junior Champion- Keri Connelly
Reserve Junior Champion- Tammi Deibler

Grand Champion Charles Lner

Reserve Grand Champion Keri Connelly

JERSEY

Spring Calf- 1 EDN-RU Jerseys, 2 Josh Kellerman, 3 Craig & Susie Wicker
Winter Calf- 1 Craig & Susie Wicker, 2 Charles Lner, 3 EDN-RU Jerseys
Fall Calf- 1 Greg McMurtie, 2 Cassandra Richards
Summer Yearling- 1 Jennifer Kellerman, 2 Ben Cloninger, 3 Mary Anne Clouser
Spring Yearling- 1 Craig & Susie Wicker, 2 Jessica McMurtie, 3 Allen Reanck
Winter Yearling- 1 Mary Anne Clouser
Junior Champion- Jennifer Kellerman
Reserve Junior Champion- Craig & Susie Wicker

Junior 2-year-old- 1 Josh Kellerman, 2 Craig & Susie Wicker, 3 Craig & Susie Wicker
Senior 2-year-old- 1 Craig & Susie Wicker, 2 EDN-RU Jerseys, 3 Jessica McMurtie
Junior 3-year-old- 1 Craig & Susie Wicker, 2 EDN-RU Jerseys, 3 Greg McMurtie
Senior 3-year-old- 1 EDN-RU Jerseys, 2 Craig & Susie Wicker, 3 Lynne Reanck

4-year-old- 1 Jennifer Kellerman, 2 EDN-RU Jerseys, 3 Craig & Susie Wicker
5-year-old- 1 EDN-RU Jerseys, 2 Craig & Susie Wicker, 3 Jessica McMurtie
100,000# Class- 1 Craig & Susie Wicker
6 yrs. & older- 1 Craig & Susie Wicker, 2 EDN-RU Jerseys, 3 Craig & Susie Wicker

Best 3 females- 1 Craig & Susie Wicker, 2 EDN-RU Jerseys, 3 Lynne Reanck
Dairy Herd- 1. Craig & Susie Wicker, 2. EDN-RU Jerseys, 3. Greg McMurtie
Produce of Dam- 1 Jennifer Kellerman, 2. Craig & Susie Wicker, 3. EDN-RU Jerseys
Dam & Daughter- 1 Josh Kellerman, 2 EDN-RU Jerseys, 3 Craig & Susie Wicker
Senior Champion- Craig & Susie Wicker

Reserve Senior Champion- Craig & Susie Wicker
Grand Champion- Craig & Susie Wicker
Reserve Grand Champion- Craig & Susie Wicker
Champion Udder- Craig & Susie Wicker

Reserve Champion Udder- Craig & Susie Wicker
MILKING SHORTHORN
Spring Calf- 1 Mary Anne Clouser

Spring Yearling- 1 Mary Anne Clouser
Junior Champion- Mary Anne Clouser
Reserve Junior Champion- Mary Anne Clouser

Jr. 3-year-old- 1 Mary Anne Clouser
6 yrs. & older- 1 Mary Anne Clouser
Dam & Daughter- Mary Anne Clouser

Senior Champion- Mary Anne Clouser
Reserve Junior Champion- Mary Anne Clouser
Grand Champion- Mary Anne Clouser

Reserve Junior Champion- Mary Anne Clouser
HOLSTEIN
Spring Calf- 1 Charles Lner, 2 Franlo-Alken Farm, 3 Amanda Gates
Winter Calf- 1. Fairbrook Farms, 2. Lori Connelly, 3 Emily Cloninger

Fall Calf- 1 Ron Hough Jr., 2 Lon Connelly, 3 David Kocher
Summer Yearling- 1 David Kocher, 2 Maple Hill Farm, 3 April Judy
Spring Yearling- 1 Ken Connelly, 2 Fred Strouse & Janet Deibler, 3 Emily Cloninger
Winter Yearling- 1 Reic Stine, 2 David Kocher, 3 Zachary Harding
Fall Yearling- 1 Maple Hill Farm, 2 Doug & Jennifer Wasson
Junior Champion- Ron Hough Jr
Reserve Junior Champion- Fairbrook Farm

Junior Best Three- 1 Fairbrook Farm, 2 Maple Hill Farm, 3 David Kocher
Dry Cow 4 yrs. & under- 1 Ben Cloninger, 2 Franlo Alken Farm
Dry Cow 5 & Over- 1 Buck Gates
Senior 2 year-old- 1 Ron Hough, 2 Matt Ulmer, 3 Brian Stringer

3 Year Old Futurity- 1 Emily Cloninger, 2 Penn Dell Farm, 2 Ben Cloninger
Junior 3-year-old- 1 Penn Dell Farm, 2 Doug & Jennifer Wasson
Senior 3-year-old- 1 Emily Cloninger, 2 Penn Dell Farm

4 year old- 1 Ron Hough Jr., 2 Tammi Deibler, 3 Karen Stringer
5 Year Old- 1 Valleys End Farm
100,000# Class- 1 Penn Dell Farm, 2 Brian Stringer
6 years & older- 1 Doug & Jennifer Wasson

Best 3 Females- 1 Penn Dell Farm, 2 Doug & Jennifer Wasson
Dairy Herd- 1 Ron Hough Jr, 2 Penn Dell Farm, 3 Stringers Sandy Ridge
Produce of Dam- 1 Doug & Jennifer Wasson, 2 Penn Dell Farm
Dam & Daughter- 1 Penn Dell Farm, 2 Brian Stringer

Senior Champion- Ron Hough Jr
Reserve Senior Champion- Ron Hough Jr
Grand Champion- Ron Hough Jr
Reserve Grand Champion- Ron Hough Jr

Champion Udder- Ron Hough Jr
Reserve Champion Udder- Ron Hough Jr
Premier Exhibitor- Ron Hough Jr
Premier Breeder- Stringers Sandy Ridge Farm



Mark Hough stands next to his brother Ron Hough Jr. of Rebersburg who was named premier breeder of the Centre County Holstein Show. Next to them is Jim Houser, vice-president of the Centre County Holstein Club, who donated the banners, and the members of the Stringer Family. Stringers Sandy Ridge Farm was named premier breeder at the show. Standing next to Jim is Brian Stringer and his father, Bill. In the front row is Scott Stringer and Karen Stringer. Missing is mother, Joyce and oldest son Craig.



Keri Connelly and Lori Connelly representing Fairbrook Farms of Pennsylvania Furnace stand with the reserve junior champion, Fairbrook-Farms BC Louise. Ron Hough Jr. of Rebersburg stands with his junior champion, Valleys-End Charles Cara-ET.

Pork Month Promotions

DES MOINES, Iowa — The U.S. pork industry will have two major promotions under way this fall during National Pork Month to encourage consumers to purchase more pork.

Since 1972, the National Pork Producers Council (NPPC) has celebrated October as National Pork Month. That's because it traditionally is the time of year when more pork products are available for consumers at the meatcase. Approximately 23,000 retail food stores will take part in pork promotions this fall, says John Hagerla, NPPC director of retail marketing.

Pork's role in breakfast will be the focus of the Pork Lovers' Breakfast promotion from September through November. According to consumer research, bacon, sausage and ham continue to help make pork the most popular meat during breakfast, says Robin Kline, M.S., R.D., NPPC assistant vice president of marketing communications.

Just in time for elegant holiday dining, in October the pork industry will launch the "Rack of Pork, The Next Tradition" promotion in retail food stores. The promotion, which will run through the holiday season, will be supported by an appetizing color advertisement of the rack of pork dish. The advertisement will run in 13 national magazines including Ladies' Home Journal, People and Bon Appetit.

This is the 10th anniversary of the Pork. The Other White Meat® advertising campaign, says Kline.



Your Complete Headquarters For
Sprayers And Parts

Raven Tough Polyethylene Tanks

We Also Stock A Complete Line Of:

Teqjet
Sprayer Nozzles
And
Accessories

Hyprow
Pumps
And
Accessories

**PACER
PUMPS**

- Sprayer Hose
- Ball Valves
- Nylon Fittings
- Poly Tanks

PAUL B. ZIMMERMAN, INC.



50 Woodcorner Rd., Litzitz PA 17543
1 Mile West of Ephrata

(717)738-7350

HARDWARE - FARM SUPPLIES - CRANE SERVICE

HOURS
Mon Thurs Fri 7 8 30
Tues Wed 7 5 30
Sat 7 4 00



Petersheim's Cow Mattresses

Rubber Filled Cow Mattresses

117 Christiana Pike (Route 372)
Christiana, PA 17509

PastureMat

The Golden Standard
In Cow Comfort



- Fits Any Stall
- Reduces Bedding Costs
- Polypropylene Bag Filled with Rubber



- Sewn Every 4" To Prevent Shifting
- Easier For Cows To Get Up And Down
- NEW! Non-woven 50 oz Top Cover - Less Abrasive

INSTALLATION AVAILABLE. CALL FOR DETAILS

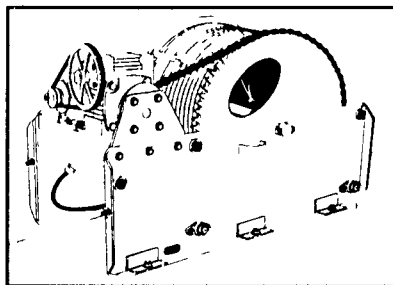
SAM PETERSHEIM

610-593-2242

CABLE SCRAPER SYSTEM FOR FREE STALL BARN

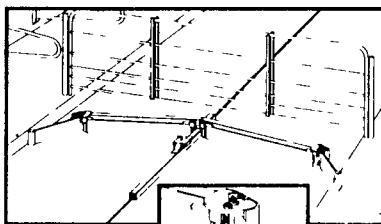
DRIVE UNIT
WITH 3/8" STAINLESS
STEEL CABLE

- Drive chain #80.
- Shaft end of reducer supported by an extra roller bearing to eliminate the overhung load of drive chain

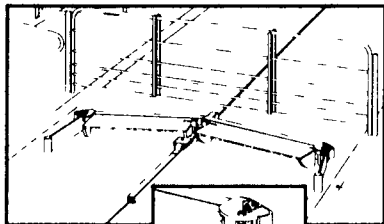


CONTROL PANEL:
Multi-function with programmable clock, adjustable overload relay and controls to operate the system in continuous or manual mode.

16° TILTING SCRAPER WITH FOLDING ENDS



Forward
stroke



Backward
stroke

- Scraper angled shape brings manure towards center for improved lateral stability
- Folding ends following uneven alley width for better cleaning
- During backward stroke, the blades instantly tilt 4-1/2" upward above

bottom of alley to prevent dragging of manure

16" DIA. CORNER WHEELS:
Mounted on greasable taper roller bearings protected by 2 seals.

HOULE

FARM EQUIPMENT MANUFACTURER
Tel.: (819) 477-7444 / Fax: (819) 477-0486

**MID-ATLANTIC
AGRISYSTEMS**

Quarryville, PA 17566
800-222-2948