

**Central U.S. Carlot**

**Beef Report**  
 October 8, 1997  
 Report supplied by USDA  
 USDA NATIONAL CARLOT BEEF REPORT (INCLUDES MAJOR PRODUCTION AREAS IN THE MIDWEST AND TX) AS OF 3 P.M.  
**COW AND BULLS CARCASS FOB OMAHA**  
**3.0 LOADS REPORTED**  
 COMPARED TO TUESDAY'S 3 P.M. REPORT: UTILITY CARCASSES 2.00 LOWER; CUTTER NOT ESTABLISHED. DEMAND LIGHT FOR MODERATE OFFERINGS.  
 UT, BRK 2-4 450 LBS. AND UP, 1.0 LOADS, RANGE 56.00, LATEST ESTB. MKT. 56.00.  
 UT, BNG 1-3 400 LBS. AND UP, 2.0 LOADS, RANGE 60.00, WGHTD. AVG. 60.00.  
 CUTTER 1-2 350 LBS. AND UP, LATEST ESTB. MKT. UNQUOTED.  
 BULLS YG#1 500 LBS. AND UP, UNQUOTED.  
**COW AND BULLS CARCASSES CAF WEST COAST**  
 MARKET FOR WEEK ENDED: OCT. 3.  
 UT, BRK 2-4 400 LBS. AND UP, RANGE 59.00.  
 CUTTER 1-2 350 LBS. AND UP, RANGE 59.00.  
**BONELESS PROCESSING BEEF/**  
**BEEF TRIMMINGS**  
 179.0 LOADS REPORTED LEAN BONELESS WEAK TO 2.50 LOWER; 85% WEAK; 75% GENERALLY STEADY TO WEAK; 65% WEAK TO 1.00 LOWER DEMAND LIGHT TO MODERATE FOR MODERATE TO HEAVY OFFERINGS. BEEF TRIMMINGS LOWER ON LIGHT TO MODERATE DEMAND AND HEAVY OFFERINGS.  
**FOB OMAHA BASIS**  
 90% FR. 18 LOADS, RANGE 77.0-79.0, WT. AVG 78.14  
 90% FZ, 2 LOADS, RANGE 86.0, WT. AVG. 86.00.  
 85% FR, 9 LOADS, RANGE 74.0-74.5, WT. AVG 74.11  
 85% FZ, UNQUOTED  
 75% FR, 5 LOADS, RANGE 63.0-64.0, WT. AVG. 63.40.  
 75% FZ, UNQUOTED.  
 65% FR, 6 LOADS, RANGE 48.5, WT. AVG. 48.50.  
 65% FZ, UNQUOTED.  
 50% FR, 65 LOADS, RANGE 33.00-35.50, WT. AVG. 33.80.  
 50% FZ, 13 LOADS, RANGE 38.00, WT. AVG. 38.00.  
 50% BX, 15 LOADS, RANGE 36.00, WT. AVG. 36.00.  
**FOB EAST TX & OK**  
 90% FR, 20 LOADS, RANGE 78.0-78.5, WT. AVG. 78.08.  
 90% FZ, 85% FR, 85% FZ, 75% FR, 75% FZ, 65% FR, 65% FZ, ALL UNQUOTED  
**CAF NE AREAS**  
 90% FR, 24 LOADS, RANGE 81.0-82.0, WT. AVG. 81.56.  
 90% FZ, UNQUOTED.  
 85% FR, 2 LOADS, RANGE 76.5, WT. AVG. 76.50.  
 85% FZ, 75% FR, 75% FZ, 65% FR, 65% FZ, UNQUOTED.  
**CAF WEST COAST BASIS**  
 WEEK ENDED 10/3/97  
 90% FR, RANGE 81.0-83.0, WT. AVG. 81.50.  
 90% FZ, UNQUOTED.  
 85% FR, RANGE 75.0-78.0, WT. AVG. 76.13.  
 85% FZ, UNQUOTED.  
 75% FR, UNQUOTED.  
 75% FZ, UNQUOTED.  
 65% FR, RANGE 48.0-53.25WT. AVG. 51.16.  
 65% FZ, RANGE 54.0, WT. AVG. 54.00.  
 50% FR, RANGE 37.0-41.0, WT. AVG. 39.10.  
 50% FZ, UNQUOTED.  
 \*\*ABCDE AFTER QUOTES REPRESENTS DAYS SINCE LAST ACTUAL MARKET TEST. QUOTES ARE DROPPED AFTER 5 DAYS OF NO TEST OR BEFORE IF THEY NO LONGER REFLECT CURRENT MARKET CONDITIONS.\*\*

**New Holland Sales Stables**

Thursday, Oct. 6, 1997  
**Cattle Calves Sheep Goats**  
 Today 000 203 479 703  
 Last Thursday 000 175 400 699  
 Last Year 000 000 000 000  
**CALVES: VEALERS STEADY; SLAUGHTER CALVES WEAK TO 5.00 LOWER. DEMAND FAIR FOR HOLSTEIN BULLS TO RETURN TO FARM. VEALERS: COUPLE CHOICE 200-300 LBS. 70.00-80.00; HIGH GOOD AND LOW CHOICE 180-300 LBS. 55.00-65.00, 80-110 LBS. 15.00-25.00. SLAUGHTER CALVES: GOOD AND CHOICE 300-600 LBS 40.00-60.00 RETURNED TO FARM: BULK 95-120 LB. HOLSTEIN BULLS 67.00-85.00, 85-90 LBS. 40.00-60.00, COUPLE 100-120 LB. HOLSTEIN HEIFERS 105.00-125.00. SHEEP: SLAUGHTER LAMBS FULLY STEADY, INSTANCES 10.00 HIGHER ON SMALL SUPPLY 30-40 LBS.; SLAUGHTER EWES FULLY STEADY. SLAUGHTER LAMBS: FEW CHOICE 1-2 30-40 LBS. 160.00-205.00, 40-80 LBS. 85.00-110.00, FEW 110.00-120.00, 80-100**

LBS. 75.00-90.00; CHOICE 1-3 100-130 LBS. 65.00-75.00.  
**SLAUGHTER EWES: GOOD AND CHOICE YEARLINGS AND 2 YEAR-OLDS 40.00-60.00; UTILITY AND GOOD 1-3 35.00-45.00. GOATS: BY THE HEAD, LARGE BILLIES 100.00-150.00, COUPLE 150.00-180.00; MEDIUM 75.00-100.00; MEDIUM AND LARGE MUTTON 70.00-90.00; MEDIUM NANNIES 40.00-60.00; FEW LARGE 60.00-80.00; GOOD AND CHOICE YEARLINGS 50.00-80.00; CHOICE KIDS 40.00-50.00; GOOD 20.00-40.00.**

**Pennsylvania Livestock Auction**

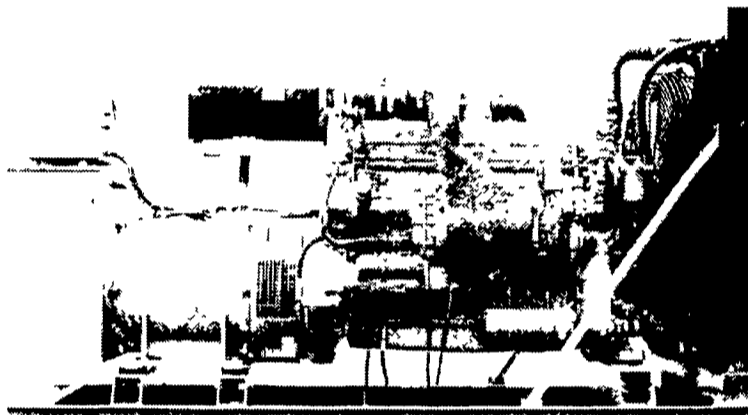
Waynesburg, Pa.  
 Thurs., Oct. 9, 1997  
 Report Supplied by Auction  
**CATTLE: SL. COWS: UTILITY & COMMERCIAL 33.00-39.00; CUTTER & BONING UTILITY 30.00-34.25; CANNER & LOW CUTTER 28.00-32.50; SHELLS 28.00 & DOWN. BULLS: YIELD GRADE 1 1500#-2000# 38.00-47.50; YIELD GRADE 2 1000#-1400# 37.00-41.00.**

**Middleburg Livestock**

**Graded Feeder Cattle Sale**  
 Middleburg, Pa.  
 Friday, Oct. 3, 1997  
 Report Supplied by PDA  
 183 HEAD.  
**STEERS MED. AND LARGE FRAME #1 400-560 LBS. 69.50-76.50; FEW 600-725 LBS. 66.00-74.50; LARGE FRAME #2 HOLSTEINS 400-700 LBS. 45.00-56.75. HEIFERS: MED. AND LARGE FRAME #1 300-500 LBS. 59.50-71.00, FEW TO 55.00; FEW 560-650 LBS. 55.00-61.00. BULLS: MED. AND LARGE FRAME #1 340-585 LBS. 61.00-68.00, LOT 7.00; FEW 600-740 LBS. 53.50-54.00; FEW LARGE FRAME #2 HOLSTEIN 425-500 LBS. 38.00-45.00.**

**FEEDER STEERS: M&L-1 300-500# 50.00-89.00; 250-280# 66.00-92.00, M 600-900 54.00-75.00. HEIFERS M 1&L-1 300-500# 40.00-78.00; L-1 400-650# 38.00-74.00. BULLS M&L-1 300-620# 42.00-85.00. CALVES: VEAL. PRIME 40.00-80.00; CHOICE 38.00-72.00; GOOD 35.00-48.00. FARM CALVES: #1 HOLSTEIN BULLS 90-120# FEW 35.00-60.00; #2 HOLSTEIN BULLS 80-100# FEW 20.00-40.00; BEEF X BULL&HFRS./HD. 20.00-55.00. HOGS: BARROWS & GILTS #1-2 210-255# 48.00-53.50; #2-3 255-280# 46.00-52.00; SOWS #1-3 300-500# 30.00-48.00. FEEDER PIGS: 1-3 15-20# 5.00-17.00/H.D.; 1-3 25-35# 10.00-34.00/H.D. LAMBS: HIGH CHOICE 80-100 LBS. 72.00-90.00; CHOICE 70-90 LBS. 74.00 TO 87.00; FEEDER LAMBS GOOD 60.00-90.00; SHEEP 20.00-41.00; FAT SHEEP 30.00 & DOWN. GOATS: LARGE 55.00-81.00/H.D.; MEDIUM 30.00-54.00/H.D.; SMALL 10.00-37.00/H.D. HORSES: 35.00-55.00, PONIES 20.00-41.50.**

**GENERATORS**



MARTIN ELECTRIC PLANTS • Manufacturer of:  
 DIESEL, LP GAS, NATURAL GAS, PTO  
 Automatic & Manual Start Systems  
**USED UNITS ALSO AVAILABLE**

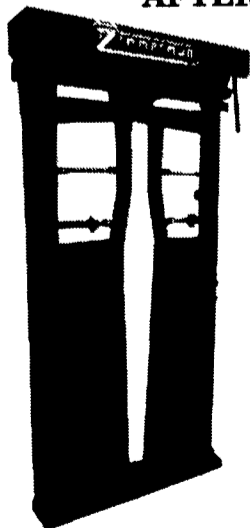
Call Us For All Your Generator Needs!

**MARTIN ELECTRIC PLANTS**

280 Pleasant Valley Rd., Ephrata, PA 17522-8620  
 800-713-7968  
 Tel: 717-733-7968 Fax: 717-733-1981



**AUTOMATIC HEADGATE**  
 FINISHED WITH BAKED ON TOP GRADE  
 POLYESTER TGIC POWDER COATING  
 AFTER FABRICATION.



**FEATURING:**

- Full roof cover for outdoor protection
- Heavy duty latch for positive locking
- Double linkage for extra stability
- Control handle operated from either side
- Fast, easy adjustments to match animal size and neck size from 5" to 7"
- Handle to manually operate for slow or horned cattle

**PAUL B. ZIMMERMAN, INC.**

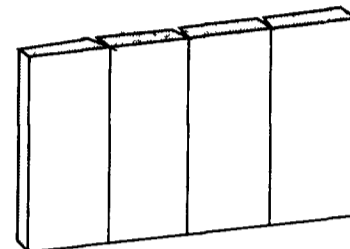
Call or Write For  
 Additional Information  
 And Your  
 Nearest Dealer

Hours  
 Mon. Thru Fri.  
 7 to 5

295 Woodcorner Rd.  
 Lititz, PA 17543-9165  
 1 Mile West of Ephrata  
 717-738-7365

**Lancaster Poured Walls**

- Agriculture
- Commercial • Residential



**Call for Prices On:**

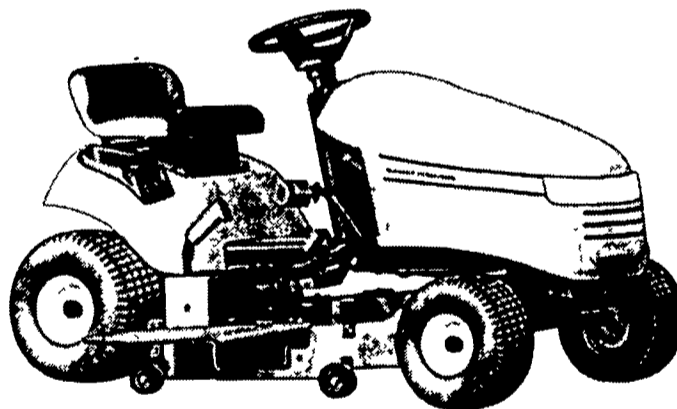
- SCS approved Manure Storage Pits
- Basements
- Retaining Walls
- Footers
- Floors

Customer Satisfaction is Our Goal

**Lancaster Poured Walls**

2008 Horseshoe Rd. • Lancaster, PA • (717) 299-3974

**MASSEY FERGUSON 2500 SERIES**  
 GIVES YOU A TOTAL OF 8 THINGS  
**JOHN DEERE, TORO AND CUB**  
**CADET LAWN TRACTORS WON'T**



1. Industry's only Free Floating Mower eliminates scalping.
2. Industry's only Torsion Bar Suspension for superior traction and stability.
3. Industry's tightest turning radius (14") minimizes hand trimming.
4. 150 yrs. of experience
5. Best selling brand in the Western World
6. Available in special Penn State edition.
7. \$100 FACTORY REBATE GIVES YOU EXTRA SAVINGS.

**8. 0%, No Money Down, No Monthly Payments til April 1998 allows you to buy now and pay with next year's income tax refund.**

\* Revolving Charge Plan available to qualified customers with no money down. No monthly payments & 0% interest until 4/1/98. After 4/1/98 minimum payment based on 1/36th repayment terms at prime plus 11% APR. Minimum Finance Charge 50 cents. Visit your dealer for details. Prices and tax may vary. Offer ends December 31, 1997.



**MASSEY-FERGUSON**  
 LAWN & GARDEN EQUIPMENT

**LAWN CARE OF PA**

Martindale, PA • (717) 445-4541