

Bloomsburg Fair Boasts Increase In Exhibitors

(Continued from Page A25)

judged by Dave Castrogiovanni, the champions were: Jersey- grand champion, Four Springs Juno Jasmine, Craig and Susan Wicker, Centre Hall; reserve champion, EDN-RU J Imperial Thelma Marilee, Harold and Shirley Harpster, Boalsburg.

Guernsey- grand champion, Sheldegren AD Starlite, Tim & Marla Berger, Orangeville; reserve champion, Level Square

Perfecto Elva, Bruce Hemsarth, Millville.

Brown Swiss- grand champion, CIE Warwick Farms Emory, Trudy Swendson, Honesdale; reserve champion, Blackland Jade Kathy, Trudy Swendson.

Ayrshire- grand champion, HK Farms MB Tina, Roberta Fogleman, Muncy; reserve champion, Don-Sher Master Cathey, Daniel Rishel, New Columbia
Milking Shorthorn- grand

champion, Cate's Rev. D. Sassy-Exp, Jennie Lester, Montrose; reserve champion, Bar D Marilee, Melissa Wolfe, Northumberland.

In the 4-H Dairy Cattle Show, breed grand champions were Ayrshire, Roberta Fogleman; Brown Swiss, Alicia Wolff; Guernsey, Amanda Hemsarth; Holstein, Kevin Hock; Jersey, Matthew Wolfe; Milking Shorthorn, Meslissa Wolfe. Showmanship winners were: Senior, Kevin Hock; Intermediate, Randy Wolfe; and Junior, Olivia Keefer.

Proceeds to 62 4-H members selling their project animals at the livestock sale totalled \$30,490. The average selling prices with champions were \$.77 per pound for 13 steers; \$1.45 per pound for 56 lambs, and \$.92 per pound for 41 hogs.

Alaine Bower of Cogan Station sold her champion market steer to Hoss's Steak and Sea House of Shamokin Dam for \$1 a pound. The reserve champion market steer owned by Janice Bower, Alaine's sister, was sold to L&K Mills of Benton for \$.91 per pound. Other 4-H'ers with top selling steers were Matt Porter, Elysburg, \$.90 per pound (\$1,157.40); Brandon Herman, Beavertown, \$.81 per pound (\$1,077.30); and Jeremy Wolfe, Lewisburg, \$.80 per pound (\$1,044).

Former champion lamb showman Chris Rice of Rice's Livestock in Mifflinburg bought the champion market lamb from Alaine Bower for \$3 a pound. The



Alaine Bower of Cogan Station also had the grand champion market lamb, which was sold to Chris Rice's Livestock in Mifflinburg for \$3 per pound or a total of \$360.

reserve champion market lamb, shown by Janice Bower, went to Middleburg Livestock for \$2.75 a pound. Matt Porter had the two top selling lambs, one going for \$3.25 per pound (\$390) and the other for \$4.00 per pound (\$388).

Steve Smith of Williamsport had both champion and reserve champion market hogs. The

champion was sold to Middleburg Livestock for \$2.50 a pound, while the reserve champion went to Hoss's in Shamokin Dam for \$1.70 a pound. Other top selling hogs were sold by Gerald Wertz of Danville for \$1.75 per pound (\$455) and Alan Wertz of Danville for \$1.75 per pound (\$428.75).



The junior champion of the East Central Holstein Show at the Bloomsburg Fair was Rob-Run Charles Betsy exhibited by Robert Bronson of Bloomsburg and pictured here with Steve Van Kuren at the lead.

Farmers Perform Haylift

ANNAPOLIS, Md. — Maryland farmers have been making hay for their drought-stricken colleagues and a "haylift" operation has been quietly under way involving at least five Maryland counties.

Hay producers or just farmers with hay to spare in Calvert, St. Marys, and Wicomico counties have already donated hay to farmers in need. The donated hay has gone to farmers in Carroll and Frederick counties. The Maryland Farm Bureau has coordinated the effort.

Most of the hay so far has gone into Frederick County, which is the state's leading dairy county and has been particularly hard hit by the 1997 drought. To date, approximately 10 farmers have donated hay with about 20 tons of the amount shipped.

"Anyone who has any feed available either for donation or sale should contact the Maryland Farm Bureau or their local county extension agent," said Maryland Secretary of Agriculture Lewis R. Riley.

Any farmer with hay to donate should contact the Maryland Farm Bureau at (410) 922-3426,

LONG DISTANCE PHONE SERVICE ONLY 7.9 cents a minute for interstate calls to anywhere within USA anytime

- NO Access Codes
- NO Prepayment
- NO Monthly Fees
- NO Minimum Usage
- NO Term Contract
- Quality Service by Major Carriers
- For Business & Residence use
- 6 sec. Increment Billing after 1st min.
- Account Codes with individual billing for community phones

FREE Cellular Phone Never Pay for Airtime

NO prepayment, NO term contract, NO security deposit
NO credit check, NO monthly bill. Small Application fee

Pre-Paid Phone Cards only 15.9 c/min. NO surcharge

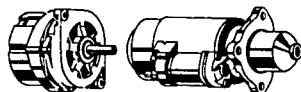
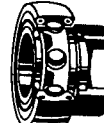
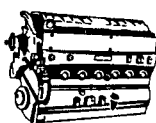
For more information on the above items, call 800-779-7729

Part time or full time sales people wanted. Inquire about the \$50,000 annual income plan. Customers can earn an income with our referral plan

Quality Assured Case IH Parts

BEST PARTS.... BEST DEAL.... BEST VALUE

When You Need Parts, Call SALEM For FAST Courteous Service. Express Service To Your Farm.... Please Call Today.



- * CASE IH * HESSTON
- * MASSEY-FERGUSON
- * NEW IDEA * KUBOTA
- * GEHL * KUHN * BRILLION

SALEM FARM SUPPLY

Route 22; Salem, NY

1-800-999-FARM (3276)

FAX: 518-854-3057

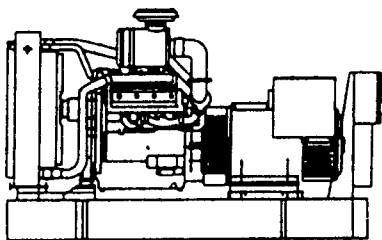
CASE CREDIT CARD - FARM PLAN - VISA - MASTERCARD - DISCOVER

1997 CASE CORPORATION
Visit us on the Internet at <http://www.casecorp.com>
Case IH is a registered trademark of Case Corporation

CASE III

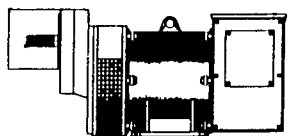


GENERATOR SYSTEMS 1-800-779-8809



New & Used 5 to 2500 KW Diesel • Propane • Natural Gas

24 Hour Emergency Service
Sales - Installation
Maintenance Contracts • Rentals



Tractor Driven

Generators 10-150 KW
1800 RPM Brushless
New & Used

DYNA TECH^{Ind.}

Dynamic Technologies

DYNA-TECH INDUSTRIES

602 E. Evergreen Rd., Lebanon, PA 17042

717-274-8899 FAX 274-8934

Visit us on The Web Site: <http://www.dynagen.com>
Ask About Our Lightning & Surge Protection Units
Panel Mount • Plug-In • Electric Fence Protection



Leasing Available