

# Pa. Posts Graded Feeder Cattle Sale Dates

**HARRISBURG (Dauphin Co.)**  
— The following dates have been released for the fall Pennsylvania graded feeder cattle sales. These dates have been selected so area producers can plan ahead to market their feeder cattle. Interested buyers should plan on attending these sales to fill their needs.

Cattle will be sold in uniform lots according to grade, weight, sex, and breed or color. Some sales will not accept cattle with

dairy breeding, yearlings, bulls, or cattle with horns. Personnel from the Livestock Division of the Pennsylvania Department of Agriculture, Bureau of Market Development will grade the cattle for frame size and muscle thickness, using USDA Feeder Cattle grading standards.

The 1997 sale dates and locations are as follows:

• New Wilmington Livestock Auction, New Wilmington, Pa.

(Lawrence Co.). Sale date and time: Friday, Oct. 10, 6 p.m. Cattle received: Oct. 10, 1997 — 8-2 p.m. Estimated headage: 300 to 400. Contact: Tom Skelton (330) 793-3590. Sale barn: (412) 946-8621.

• Pa. Livestock Auction, Waynesburg, Pa. (Greene County). Sale date and time: Wednesday, Oct. 15, 10:30 a.m. Cattle received: Oct. 14, 7 a.m. - 6 p.m. Estimated headage: 1,000. No bulls or yearlings will be graded. Contact Joe Friend (301) 746-8178. Sale barn: (412) 627-9585.

• Bedford Cattlemen's Assn. Bedford County Fairgrounds, Bedford, Pa. (Bedford County). Sale date and time: Oct. 18, 1 p.m. Cattle received: Oct. 17, 8 a.m. - 2 p.m. Estimated headage: 200. Contact Dave Miller (814) 623-2321, Ed Wolfhope (814)

733-4307, and Allan Hammond (814) 623-1603.

• Central Pa. Livestock Coop — Feeder Calf & Yearling Sale, Belleville Livestock Auction, Belleville, Pa. (Mifflin County). Sale date and time: Friday, Oct. 17, 7 p.m. Cattle received: Oct. 17, 7 a.m. - noon. Estimated headage: 300 to 350. Contact James Conner (717) 726-3055. Sale day: (717) 935-2146.

• Indiana Farmer's Livestock Market, Homer City, Pa. (Indiana County). Sale date and time: Saturday, Oct. 18, 7 p.m. Cattle received: Oct. 18, 8 a.m. - 2 p.m. Estimated headage: 400. Contact Becky Lipsi (412) 397-2000. Sale barn: (412) 479-2600.

• Westmoreland County Cattle

County Fairgrounds, Greensburg, Pa. (Westmoreland County). Sale date and time: Saturday, Oct. 25, 6:30 p.m. Cattle received: Oct. 25, 8 a.m. - 11 a.m. Estimated headage: 200. No cattle with horns, dairy breeding, or bulls will be accepted. Contact Brian McCallister (412) 465-3880 or (412) 837-1402.

• Middleburg Livestock Auction, Middleburg, Pa. (Snyder County). Sale date and time: Friday, Nov. 7, 7 p.m. Cattle received: Nov. 7, 7 a.m. - 3 p.m. Estimated headage: 300 to 400. Contact Larry Benfer (717) 837-5638 or Clarence Shirk (717) 656-8793. Sale barn: (717) 837-2222.

Additional information about these sales is available by calling Richard C. McDonald, Jr., Livestock Division, Bureau of Market Development, at (717) 787-5319.

## Pennsylvania Livestock Auction

Waynesburg, Pa. Thurs., Oct. 2, 1997

Report Supplied by Auction

CATTLE: SL. COWS: UTILITY & COMMERCIAL 33.00-37.50; CUTTER & BONING UTILITY 30.00-34.00; CANNER & LOW CUTTER 28.00-32.50; SHELLS 30.00 & DOWN. BULLS: YIELD GRADE 1 1500#-2000# 38.00-46.00; YIELD GRADE 2 1000#-1400# 37.00-41.00.

FEEDER STEERS: M&L-1 300-500# 50.00-89.00; 250-280# 66.00-94.00, M 600-900 57.00-75.00. HEIFERS M I&L-1 300-500# 40.00-78.00; L-1 400-650# 38.00-74.00. BULLS M&L-1 300-620# 42.00-85.00.

CALVES: VEAL, PRIME 40.00-80.00; CHOICE 38.00-72.00; GOOD 35.00-48.00.

FARM CALVES: #1 HOLSTEIN BULLS 90-120# FEW 35.00-60.00; #2 HOLSTEIN BULLS 80-100# FEW 20.00-40.00; BEEF X BULL&HFRS./HD. 20.00-55.00.

HOGS: BARROWS & GILTS #1-2 210-255# 48.00-53.50; #2-3 255-280# 46.00-52.00; SOWS #1-3 300-500# 30.00-48.00.

FEEDER PIGS: 1-3 15-20# 5.00-17.00/HD.; 1-3 25-35# 10.00-34.00/HD.

LAMBS: HIGH CHOICE 80-100 LBS. 72.00-91.00; CHOICE 70-90 LBS. 74.00 TO 87.00; FEEDER LAMBS GOOD 60.00-90.00; SHEEP 20.00-39.00, FAT SHEEP 30.00 & DOWN.

GOATS: LARGE 55.00-81.00/HD.; MEDIUM 30.00-54.00/HD.; SMALL 10.00-37.00/HD.

HORSES: 35.00-65.00, PONIES 20.00-44.50.

## New Holland Dairy

New Holland Sales Stables Wednesday, October 1, 1997

Report supplied by auction

125 DAIRY COWS; 194 HEIFERS; 16 BULLS. MARKET LOWER.

LOCAL FRESH 650.00-1375.00.

LOCAL SPRINGERS 600.00-1210.00.

FRESH HEIFERS 635.00-1275.00.

UPSTATE LOADS FRESH 885.00-1375.00.

BETTER FRESH COWS 1275.00-1375.00.

HERD 32 HEAD PUREBRED AND GRADES, ALL STAGES, 360.00-1775.00.

SPRINGING HEIFERS LARGE 1000.00-1250.00, SMALL 460.00-885.00.

SHORTBRED HEIFERS 685.00-1000.00.

REGISTERED HEIFERS 635.00-1285.00.

OPEN BREEDING AGE HEIFERS 650.00-700.00.

SMALL OPEN HEIFERS 310.00-600.00.

BULLS 210.00-625.00, PUREBREDS 260.00-660.00.

## Valley Stockyards

Athens, Pa.

September 29, 1997

Report Supplied By Auction

HOLSTEIN HEIFER CALVES TO 100.00.

VEAL CALVES TO 57.50.

VEALER BULL CALVES TO 102.50.

SLAUGHTER CALVES 30.00 AND DOWN.

GRASSERS AND FEEDERS 13.00-42.50.

LAMBS TO 77.00.

SHEEP 29.00-44.00.

HOGS, 200-250, TO 55.00.

SOWS 35.00-38.50.

BOARS TO 26.50.

PIGS 26.00-32.00.

HEIFERS, FAT, TO 43.00.

STEERS TO 50.00.

STEERS, FEEDER, TO 57.00.

BULLS 27.50-43.25.

COWS, GOOD, 31.75 TO 38.50.

COWS, MEDIUM, 28.50-30.25.

COWS, POOR OR SMALL, 27.75 AND DOWN.

DONKEY 145.00.

PONIES 185.00.

GOATS 27.50-54.00.

## HYDRO COW FLOTATION



With the Hydro Cow Flotation System you can float a down cow back onto its legs harmlessly without using clamps, belts or chains. The Hydro Cow is a natural way to get a cow back on its legs using only warm water.

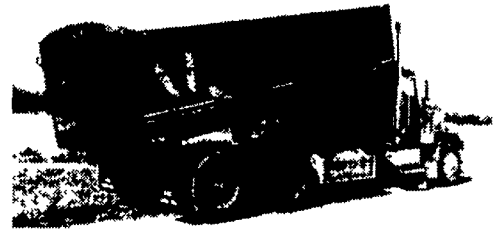


Hydro-Cow Flotation Service is available in Lancaster, York and Chester Counties, and northeastern Maryland

From: **Solanco Veterinary Service**  
496 Solanco Rd., Quarryville, PA  
717-786-1303, 1-800-262-7331  
717-786-8550 Evenings

## NOW AVAILABLE in YOUR AREA

### GRAIN BODY



► **DBI** UNIBODY GRAIN BODY utilizes high strength high tensile steel and tubular side & top rails in the new unibody design to provide strength and durability and save up to 1000# from weight of traditional steel body.

► **DBI** UNIBODY GRAIN BODY is Convenient with features including all swing, 3-section tailgate with Camlocks & Camlock flow gate plus front & rear windows allowing operator to view load.

► **DBI** UNIBODY GRAIN BODY is custom built & available in lengths from 16' to 24', side heights from 48" to 72" and widths from 8' to 8.5' plus your choice of over 100 color & decal combinations

### October Special Offer

'85 International S series 1900, 468 Diesel, 10 Speed Road Ranger with 16' **CB** Grain Body

Was \$24,000 NOW ONLY \$19,900

'84 Ford LNT8000, Fresh 3208 CAT, 6613 Fuller Trans., brand new tires with 20" **CB** Combination silage/grain body  
Was \$29,999 NOW ONLY \$26,900

In Stock  
Ag Truck Bodies & Work Ready Units

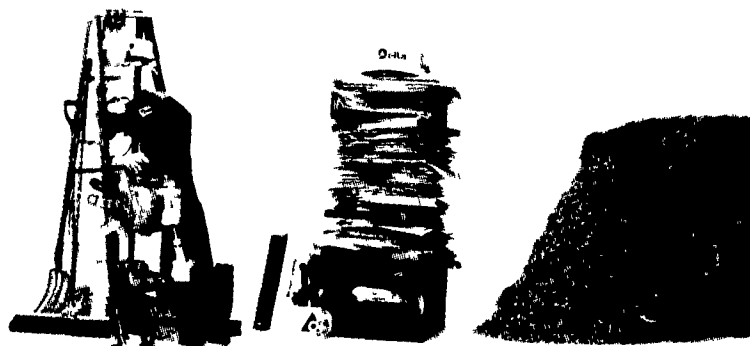
For More Information, Call Us Toll Free

1-888-278-2639

Cortland St., DeRuxter, New York

**★ CB BODY ★**

## Of all the things that can pile up on you,



### Don't let manure be one of them

Whether you're planning to build a new facility or upgrade your existing operation rest assured that the Delta Livestock Systems specialists won't treat your manure as waste, but

will offer environmentally sound ways to handle this valuable resource. For more information, contact your local independent Alfa Laval Agri™ dealer or call 1-800-365-1883 about

Delta Livestock Systems — clearly the leaders in manure handling equipment



**Alfa Laval Agri**

## Come to the Animal Housing Expo



A quality show of animal housing products, services

### November 18-19 - Lebanon Fairgrounds

#### Swine Speakers:

**Dr. Larry D. Jacobsen**  
Extension Ag Engineer  
University of Minnesota  
Designing Facilities  
for Wean-to-Finish Production

**John Chapman**  
White Oak Mills  
Adjusting To Three-Site  
Swine Production  
Swine Finishing on Dairy Farms

**D.L. George**  
Hatfield  
The Autofom Caress Payment  
Program

Producer Panel

#### Dairy Speakers:

**John W. Ferry**  
Dairy Consultant  
Belleville, NY  
Dairy Expansion Preparations  
Working the Expansion Plan  
Managing the New Facility  
Animal/Worker Performance

#### Producer Panels Commercial Exhibits:

Builders Contractors  
Machinery Equipment  
Consultants Advisors  
Utilities Other

#### Educational Displays

Food  
Free Parking  
Free Admission

For Information  
Call Dan McFarland  
Phone: 717-840-7408