

Mack Superliner 1983, 13-spd, 350 w/Dynatard, wet line, AC, must sell. Come see, make offer. Inspected, road ready. 717/528-4134, 717/528-4687 Adams.

Mack Manure truck, 4700 gallon. All new rear suspension, new batteries, spreader lights, good tires, good running truck, field ready. \$9200. (610)932-8986

Kenworth 350 Cummins, 13spd, Trailco 28' aluminum grain dump trailer w/roll tarp, \$9,000. Tim (717)865-2911.

National truck crane, unmounted, 8 ton cap., 65' boom height w/18' body, very good condition, \$9000 OBO. 717/359-9423.

### GOOD USED PARTS

- New Rebuilt VT-50 Cummins Turbos \$175/each
- Cabover Freightliner w/excellent Cummins engine, 9-spd trans, Rockwell rears, 24 5 rubber, good solid work truck \$3,250
- Excellent 4 cyl JD diesel power unit w/pump, pump needs work, mounted on trailer, 1473 hrs ~~\$3,500~~ \$3,250 OBO
- Detroit 8V-92 running take out, 435 hp \$1,750 \$1,650
- IH 466 motor, needs rebuilt \$1,750 \$1,650
- Kubota 4 cyl diesel engines w/shaft, run good \$1,750
- KW 8-bag air ride cut off w/rears
- MD 1 Thermo King truck reefer, runs good \$2,250 \$2,150
- Rebuilt 3-71 Detroit power unit, needs clutch \$1,950

**(717) 538-2324**

- 1996 Freightliner S/A air ride, cut off 7000 miles, like new
- Mack S/A rear cut offs, 38,000, Mack & Rockwell cut off.
- 1986 Dump Trailer sup.. center point Fruehauf
- 102" Trailer Bagger Budd Wheels
- Engines: Mack 237, MS300, Cat 3208, 1160 Cummings, 903 Turbo, others
- (2) Alum Dump Boxes, 16' & 18' with cyl. & pump
- (2) Rolloff Units Dempster & winch type, cheap
- 690 JD Excavator with magnet, 5th wheel tow boom
- Snow Plows, air comp. 5 HP DM cab & hood
- 1991 Top Kick Cab., Mack MH cab Mercedes motor & trans.
- 20' Reefer Box Diesel with stand by
- 1962 Brockway, 257T with hyd angle plow, gas

Also other truck parts  
We buy trucks & Parts

**Call 610-944-9871**



### 1997 FORD EXPLORER LEFTOVERS

XLT, Loaded, 25 To Choose From With This Ad **\$100.00 Under Factory Invoice**



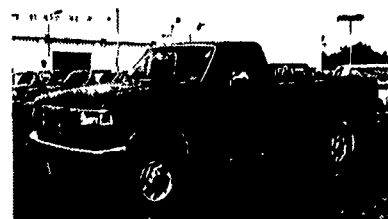
### 1996 FORD F150 4X4 SUPERCAB

9,900 Miles, 1-Owner, Super Clean Was \$25,999 With This Ad **\$20,950**



### 1997 FORD EXPEDITION LEFTOVERS

XLT, Eddie Bauer Model 6 To Choose From **UNBELIEVABLE PRICES**



### 1996 FORD F350 4X2 CREW CAB

V8, Automatic, only 23,750 miles, Black #P3186 Was \$25,999 **NOW \$21,999**

### 1995 FORD F350 4x4

Power Stroke Diesel, Automatic, Loaded, only 33,250 Miles, Red, #P3169 Was \$25,999 **NOW \$23,999**

Unless the Chapman Emblem is on Your Car or Truck... You Probably Paid Too Much!



## CHAPMAN LEBANON

-20th & CUMBERLAND STS. - RT. 422 WEST  
9-5 DAILY 9-5 SATURDAY • SHEEHY HOTLINE (717) 272-7671 OR 533-5293

PARTS DEPT. OPEN DAILY 9-5 SAT 9-12 717-273-8168

**NEW LOW NO HASSLE PRICES ON EVERY VEHICLE CHECK THEM OUT**



**OVER 150 CARS, TRUCKS AND VANS IN STOCK**

1928 West Main St. (Rt. 322) Ephrata, PA  
717-733-6548 88 TWIN-PINE

PLEASE CHECK OUR PRICES BEFORE YOU BUY



**95 CHEV 3500 SILVERADO**  
7.4L V8, AT, Loaded, 456 Rear, 10,000 GVVW, Bal. Factory Warranty, 10,000 Miles, Blue & Tan **\$24,900**



**96 DODGE RAM 2500 CLUB CAB SLT**  
Heavy Duty, 5.9L Turbo Diesel, AT, A/C, Loaded, 31,000 Miles, Bal. Fact. Warranty, Silver **\$24,500**



**95 CHEV. K 2500 SILVERADO 4X4**  
6.5 Turbo Diesel, AT, A/C, Loaded, 63,000 Miles, Teal **\$21,900**



**95 CHEV. K 1500 4x4 CHEYENNE SHORT BED**  
6 Cyl., AT, PS, PB, Rear Defroster, 19,000 Miles, Black **\$14,900**



**76 CHEV. K 3500 DUALY**  
454 V8, H.D., 4-Spd., 4x2, Good Mechanically, Beige **\$2,500**



**89 CHEV. 3500 CREW CAB DUALY 4x2, SILVERADO**  
7.4L V8, AT, A/C, Loaded, Dual Tanks, Running Boards, 79,000 Miles, Blue **\$8,900**



**88 FORD RANGER XLT**  
4 Cyl., 5-Spd., A/C, PS, PB, PW, Cap., 98,000 miles, Maroon. **\$3,995**



**94 PLYMOUTH GRAND VOYAGER SE & AWD**  
6 Cyl., AT, A/C, Loaded, 42,000 Miles, Blue. **\$13,900**



**95 GMC K1500 SUBURBAN SLT, 4x4 5.7L V8, AT, Dual A/C, Loaded, Leather, Barn Doors, 37,000 Miles, 2-Tone Blue (3-other Suburbans in stock) \$27,900**



**95 CHEV. LUMINA**  
6 Cyl., AT, A/C, PS, PB, PL, Tilt, 57,000 Miles, Black. **\$9,900**



**93 ISUZU RODEO 4x4**  
6 Cyl., AT, A/C, PS, PB, PW, PL, Stereo Cass., 57,000 Miles, Champagne. **\$13,900**



**92 FORD EXPLORER XLT**  
4.0L, AT, A/C, Loaded, Running Boards, one owner-Local Trade, 91,000 Miles, Green **\$11,500**

#### CARS

- 96 TAURUS GL, Loaded, only 20K MI, bal of fact warr .....\$12,995
- 96 PONTIAC SUNFIRE SE, AT, AC, PW, L, Cass, bal of fact warr, 16K MI .....\$10,990
- 96 SUBARU LEGACY OUTBACK SW, 12K MI, Loaded, bal of fact warr .....\$18,995
- 95 BUICK RIVIERA SUPERCHARGED, Leather, nice car .....\$16,995
- 95 CHEV. CORSICA SDN, 6cyl., AC, AM/FM, only 23K MI .....\$9,400
- 95 CHEV. LUMINA, 31K MI, PW, L, Cass, bal of fact warr .....\$10,300
- 95 FORD TAURUS GL, PW, L, Cruise, Cass, 2 air bags, 37K MI .....\$9,995
- 95 MERCURY MYSTIQUE GS AT, PW, M, L, AC, Cass, R-def .....\$10,300
- 95 OLDSMOBILE CUTLASS CIERA SL, AC, PW, L, Cass, 38K MI .....\$9,900
- 95 PONTIAC GRAND PRIX SE, 22K MI, bal of fact warr .....\$11,900
- 94 MAZDA PROTEGE DX AT, AC, R-def .....\$7,999
- 93 BUICK LESABRE LTD, Leather Dual Climate Control, 55K MI .....\$10,995
- 93 FORD MUSTANG GT CPE, 5.0L, 5spd, PW, M, L, Cass, 45K MI .....\$11,900
- 92 CADILLAC SEDAN DEVILLE, Full Power, Leather .....\$9,500
- 92 FORD MUSTANG LX, conv. 4cyl, PW, L, Cass, Power Top, Red \$5,195
- 92 HONDA CIVIC LX, 5spd, AC, PW, M, L, Cass, 57K MI .....\$8,996
- 91 FORD MUSTANG LX conv, 5.0L, AT, PW, L, C, Cass .....\$8,700
- 89 PONTIAC TRANS AM PACE CAR, Leather, 47K MI .....\$10,900
- 88 NISSAN 300ZX 5spd, AC, PW, L, Cass .....\$5,900
- 87 TOYOTA CRESSIDA AT, PW, L, AC, Cass, R-def, 73K MI .....\$6,900
- 84 NISSAN STANZA CPE, 5spd, AC, 104K .....\$1,500

#### TRUCKS - VANS - SPORT UTILITIES

- 96 SUBARU LEGACY OUTBACK AWD, SW, 12K MI, Loaded fact warr ...\$18,995
- 95 CHEVROLET BLAZER LT, Leather, All Power Options .....\$19,900
- 95 CHEVROLET SUBURBAN LS, 9 Pass, Rear Air, Tailgate .....\$25,900
- 95 GMC JIMMY SLE 4x4, 32L MI, bal of fact warr .....\$18,995
- 95 JEEP CHEROKEE SPORT 4x4, 6cyl, PW, L, AC, Cass, R-wpr .....\$17,900
- 95 JEEP GR CHER LAREDO, 39K MI Overhead Console, CD Player .....\$18,900
- 95 GMC SUBURBAN SLT 4x4, Leather, R-air, Barn Doors .....\$27,900
- 95 FORD EXPLORER XLT 4x4, 38K MI, PW, M, L, Cass, R-wpr .....\$19,700
- 95 CHEV K 1500 CHEYENNE 4x4, Short Bed, 5spd, 19K MI .....\$14,900
- 94 SUBURBAN SILV 1500 4x4, Leather, Barn Doors, Black/Mocha .....\$25,600
- 93 GMC SAFARI SLE, AWD, R-air, Towing Pkg .....\$14,900
- 94 PLYMOUTH GR VOYAGER SE AWD 42K MI, PW, L, Cass .....\$13,900
- 94 ISUZU RODEO, 47K MI, 5spd, Cass, R-wpr .....\$11,900
- 94 FORD EXPLORER XLT, PW, M, L, Cass, R-def, R-wpr .....\$16,900
- 93 CHEVROLET SILVERADO EXT, Cab 1500, 37K MI, AT Cass, R-def ...\$16,900
- 95 JEEP CHEROKEE LAREDO, 62K MI, White, 6cyl, R-def .....\$15,400
- 93 CHEVROLET SUBURBAN SILVERADO, Cloth Int, Barn Doors .....\$20,900
- 92 CHEVROLET SUBURBAN SILVERADO, 4x4 R-air, Barn Doors .....\$17,900
- 90 CHEVROLET ASTRO CL, AT, PW, L, M, AC, Cass .....\$5,995
- 89 CHEVROLET CHEYENNE Sht Bed, 8cyl, AT, PS, PB, Cass .....\$5,900
- 89 GMC SIERRA TK, 8cyl, 5spd, Cass .....\$4,500

### REMANUFACTURED ENGINES CAR & TRUCK FOREIGN DIESEL



717 957-4240  
717 957-9320  
1-800 654-4020  
1-800 507-4359  
Fax 717 957-2272

Farmers Call for Pricing

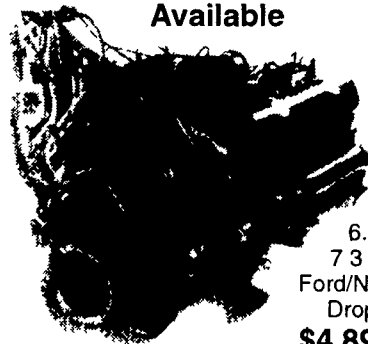
Detroit 8.2  
Caterpillar  
3208, 3406,  
1150, 1160

700 North State Rd.  
Rts. 11 & 15  
Marysville, PA 17053

Warranty 2 Yrs. 24,000 Miles

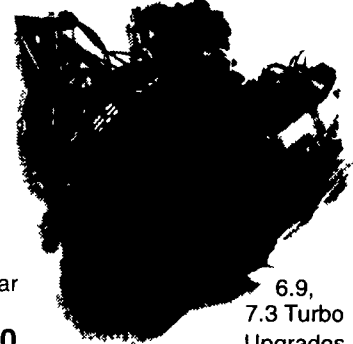
Call For Prices  
FREE Del. within 50 Mi. Radius

Foreign Engines Available



6.9,  
7.3 liter  
Ford/Navistar  
Drop In  
**\$4,895.00**

2 Years 200,000 Miles Warranty



6.9,  
7.3 Turbo  
Upgrades  
**\$7,795.00**

## Trucking Company Fleet Liquidation

### Tractors

Fords, Freightliners, Kenworths, White

### Trailers

Alloy, Fruehauf, Great Dane, Strick, Utility, Wabash

### Dollies

Stoughton, Wabash

### Dump Trailers

TY Brook, City, Dorsey, Fruh.

Call Harold Beavers at 717-975-0235

or 410-803-0927

for more details!