

TRACTORS

- MF 3525 Tractor 4WD w/Cab 105 HP
- MF 290 good rubber diesel very nice 2300 hrs
- MF 275 w/ roll bar and new paint
- MF 150 w/ new paint & rubber overhauled
- MF 135 diesel tractor
- MF 50 gas nice running tractor
- Ferguson 40 gas nice running new paint
- MF 846 loader quick tach fits MF 398
- MF 236 quick-tach loader to fit MF 184x4 like new
- MF 236 quick tach loader fits 175 up to 275 nice shape

EQUIPMENT

- Kasten 16 silage wagon w/roof
- 8 3 pt scraper blade
- MF Dyna balance mowers
- NH 489 haybine
- Glenco field cultivators 10 1/2 ft and 13
- Cultipackers 10 12 14 and different sizes
- Used Brillion cultipacker and cultimulcher parts
- Gravity box and gear
- 2 & 3 bottom 3 pt plows
- New gates & hay feeders

MF Tractor parts Dismantling 20 30 35 40 50 65 85 90
 135 150 165 175 178 180 205x4 265 270 283 285 383
 399 4WD 1080 1085 1100 1130 1105 1135 1150 1155
 2745 2775 2805 3090 3680 MH 22 44

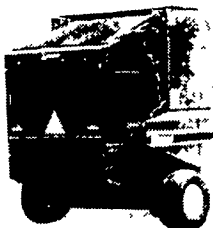
NOLT'S EQUIPMENT

403 Centerville Rd Newville PA 17241
 off 81 exit 11 2 miles N on 233

(717) 776-6242 No Sunday Calls

No Out-Of-State Personal Checks We Ship UPS

Hesston 565A Round Baler



New List Price **\$25,930**
 Save **- 7,430**
 Straight Sale Price **\$18,500**

Choose: 0% For 36 Months
 OR
 0% Until 4-1-98
 OR
 Up To Additional \$2000



5149 Cap Stine Rd. 961 Leister's Church Rd.
 Frederick, MD 21703 Westminster, MD 21157
 301/473-4250 410/848-4585
 301/293-6833 410/876-2121

MADE IN USA

TRACTOR CHAIN SALE

...prices shown are per pair

LADDER



- Least expensive alternative when tread is worn
- Minimizes damage to paved surfaces

DOUBLE RING



- Best in ice, mud and manure
- Self cleaning
- Double ring 2 1/2" diameter

DUO-GRIP



- Rides on top of deep tread
- Doesn't settle between tire lugs
- Great on soft surfaces

Tire Size	Stock #	Price
11 2 24 9 5-28	836	123 04
11 2 24 9 5 32	838	140 59
13 6 16	850	127 69
13 6 28	859	178 46
16 9 24 17 5L 24	874	199 13
16 9 28 14 9-30	876	201 23
16 9 34 15 5-38	879	236 78
18 4 34	887	336 68
18 4 38	889	357 79
20 8 38	892	439 61
Call for sizes and styles not listed		

Tire Size	Stock #	Price
9 5 28 11 2 24	736	188 62
9 5 32 11 2 28	738	206 38
12 4 28 13 6 24	756	241 66
13 6 28	759	276 59
12 4 42 13 6 38	766	327 34
14 9 24	772	310 21
14 9 28 16 9 24	774	356 32
16 9 28 16 9 30	777	382 29
14 9 38 16 9 34		
15 5 38	779	428 70
18 4 34 16 9 38	787	531 04
18 4 38	789	565 76
20 8 38	790	729 68

Tire Size	Stock #	Price
9 5 24 9 5 28	214	204 13
13 6 28 14 9 24		
12 28 12 24	242	249 99
14 24 16 9 28 16 9 24		
16 9 26 17 5L 24	262	269 10
16 9 34	270	331 58
18 4 30	271	339 45
16 9 38	272	338 99
18 4 34	273	338 99
18 4 38	274	379 99
20 8 38 20 8-42	276	487 31

South Fork Hardware Co. 313 Main Street, South Fork, PA 15956 **800-417-1314** Sale - 10/15/97 Thru 11/31/97

Evergreen Tractor Co.

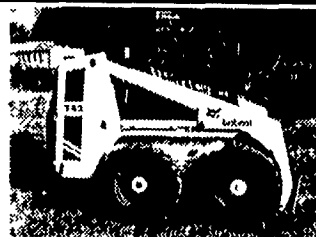
41 South Fairlane Ave., Myerstown, PA 17067

Parts, Sales, Rentals & Service for Bobcat.

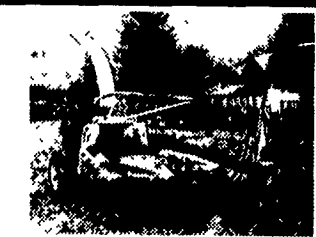
Used Equipment & Skid Loader Rentals



Bobcat 543 Very Good Condition \$6,950



Bobcat 743 \$8,400



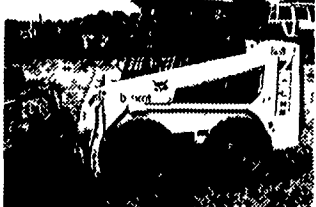
Hesston 7020 Harvester 2 RN \$1,850



JD 1210A Cart, 380 Bushel



Bobcat 751 w/709 Hoe (will Separate)



Bobcat 763H 260 Hrs.

TRACTORS/LOADERS

- Farmall Super H
- Farmall M

HAY & FORAGE

- Hesston 7020 Harvester w/2RN
- Deutz/AC GP2 5 Round Baler
- NH 846 Round Baler
- JD 346 Baler w/30 Thrower
- Hesston 1090 Haybine
- Hesston 1150 Haybine
- JD 1460 Discbine
- JD 1209 Late Model
- JD Forage Harvester Adapter Plate
- Lely 300 Rake/Tedder
- Vermear 5000 Rake/Tedder
- JD 640 Rake, Dolly wheels (Nice)
- NI 402
- JD 25A Flail Mower
- Woods C80 Pull type Mower
- NH 269 w/58 Thrower
- JD #30 Thrower, Complete
- NH #75 Bale Thrower
- (3) NH Baler Thrower attachments
- JD #50 Belly Mtd Sickle Mower
- Ford 8N Sickle Mower
- (2) Zimmerman 36 ft & 38 ft Elevators
- Little Giant 36' Elevator
- Hesston 6' Hay P/U

PLANTERS/ DRILLS

- (2) IH #10 18x7DD w/Grass & Fert
- IH 56 4 Row, w/Fert (Nice)
- JD 1440 N T, Planter, w/Fert & Insect
- JD 8300 21x7 DD w/Grass
- IH 56, 2 Row w/Fert
- IH Ground Drive Units
- IH 56, 6 Row Fert & Inst
- IH 800 4R Planter, Liq Fert & Insect
- No-Till Coulter
- (3) 2 Row Planters - JD 246, Ford 309

ROW CROP CULTIVATORS

- (2) JD 2-Cyl Cultivators
- IH 85, FT Mid Cult
- (2) IH 4 & 6 Front Mid Cult
- JD 6 RN Front Mtd, FM
- JD 4 RN Front Mtd
- (2) Hinicker 4 & 6 RN No-Till Cult
- (4) JD RM 4 & 6 RN Cult For Super C
- Anhydros/Nitrogen Knife Bar

GRAIN CARTS & STALK SHREDDERS

- Brady 12 ft Shredder
- (2) JD 1210A Grate Cart
- Large Capacity Grain Bin w/gear
- JD #26 6' Stalk Shredder

JUST TRADED - COMING IN

- 92 BC 7753 300 HRS
- AC 15 Ft F-Cult
- IH 843 + 844 Corn Head Call
- Case 130 Backhoe for Skid Loader
- '93 BC 853H, 3,000 Hrs

DISCS PACKERS/MULCHERS

- Oliver 252 Disc 11'
- (2) Oliver 241 10 ft Disc
- (2) 11' Taylorway Rockflex
- Brillion 20' Transport Packer
- 12 ft Pittsburgh Packer
- IH 500 Disc
- (2) Kewanee 18 ft Rock Flex Disc

USED SKID LOADER & ATTACH.

- '95 BC 753, 800 Hrs -Call
- '96 BC 553, 49 Hrs -Call
- B C 743 w/Front Aux Hydro
- B C 811 Hoe attachment
- B C '94 331X-Call
- B C '94 853H-Call
- '94 709 Hoe Attachment-Call
- Bobcat 543
- Bobcat 751
- Bobcat 763H
- (2) BC 642 Aux Hyd
- 7' Dirt Blades Hyd Angle
- BC Hoe Mount for Bradco
- Farm Grapple Bucket
- High Flow Planer Attachments
- Round Bale Spears
- Pallet Forks BC & NH \$660 00
- New Buckets in Stock
- New Bucket Bites
- B C 5A Landscape Rake (Used)
- Gehl Manure Forks

CULTIVATORS

- JD 400 Rotary Hoes 15' Very Good
- AC 14 ft Hyd Fold
- Kewanee 17 Ft F-Cult
- Brady 12 ft & 15 ft Cultivator w/Harrow
- JD 1000 18 & 20 Sharp
- (3) IH 45, 12, 14', 16 & 17 Nice Field Cultivator

COMBINES/HEADS/PICKERS

- JD 444 Corn Head
- JD 443 Corn Head (Rough)
- JD 7700 4 WD Turbo Hydro
- JD 6600D C/H/A Gear
- NI 323 Picker 1 Row
- NI 314 Sheller Unit \$275
- Woods Header Cart
- JD 913 Rigid
- JD 215 Flex (Excellent)
- JD 77, 4400 (Excellent)
- JD 443 (Excellent)

MISCELLANEOUS

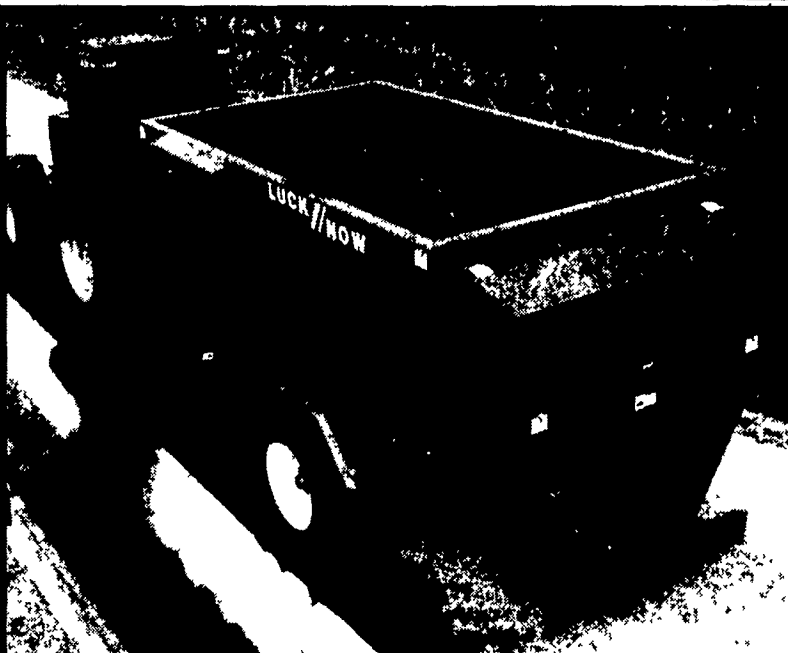
- Wic 3 pt PTO Bedding Chopper
- 10' Army Trailer
- FMC Orchard Sprayer
- P T O Driven 250 G/P/M Water Pump
- Duals 34" & 38"
- Calumet 1500 Gal Liq Spreader
- (2) 3 Pt Anhydrous Applicator or Nitrogen Orchard Blast Sprayer
- Rolling Basket Attachment
- Holland Transplanter
- Brillion 5' Seeder
- 2 pair 20 8x38 Tires,
- 1 pair 18 4x38 Tires
- E-Z Go Golf Cart (Gas)
- JD 4400 Straw Choppers & Spreader
- Wick Weed Wiper 16'
- Buster Bars & Scrachers
- CAT 2&3 Quick Hitches
- Lely 15 ft Roterra
- (3) 3 pt Tool Bars w/spring shanks
- Used 7000 - 7200 Corn Planter Motors
- 14 Kewanee Track Wacker
- (3) Bolster Hoist
- Spike Harrow Attachment
- Winco 25KW PTO Generator
- JD 329D Engine
- 6' Box Scraper
- 15' Low Profile Livestock Trailer

PLOWS & CHISELS

- JD 4200 3x or 4x Rollover Plow
- JD F145, 4x16 Semi Mt
- Athens 3 pt, 5 shank chisel
- Oliver 3 pt 3x16 cushion trip
- MF 880 4x18-5x18 Reset
- IH 3x16 Rollover
- MF 2x16 Rollover
- Glencoe 10T Chisel, Pull Type
- JD 4 Bottom Mounted Plow
- IH 720 S R S 4x Plow
- Ford 140 S R 3x16, 3 Pt
- IH 710 3x16 Spring Reset
- JD 2500 7 BTM
- Artsway 12' chisel 3 PT
- 2500 Add On BTM
- Oliver 548 Btm Spring Reset 5X
- White 6342 Rollover 3/4X
- (8) JD 2, 3, 4 Btm Plows
- 5x Pull Type Chisel

USED PARTS FOR

- 2500, 2600, 2700 & 2800 Plows
- F350 Hydraulic 345 Reset Plows
- Cultivator Parts
- Grain Drills
- Trip Plows
- Disc Harrows Openers
- Cultipackers and Roller Harrows (John Deere, Brillion & Kewanee)
- JD 35 & 38 Harvesters
- Grain Platform
- Combine Corn Head
- JD 1240 & 1250 Planters
- IH 56
- JD 7000 Planter-
- \$7,200
- JD 672 Rake
- NI 314 Sheller
- NI 325 Picker
- JD 4400 Combine
- IH 700, 710, 720, 450, Plow Parts
- JD 1600 & 1610 chisel
- IH 45 & 4500 Viber Shanks



LUCK//NOW MIXER FEEDERS "P" SERIES

Since 1979 LUCK//NOW Mixer Feeders have been recognized as one of the most dependable and strongest built mixers in the field.

To enhance its existing line of Mixer Feeders, LUCK//NOW introduces the "P" Series of Mixer Feeders with six models ranging in size from the Model 300 with a mixing capacity of 310 cubic ft., to the Model 575 with a mixing capacity of 625 cubic ft.

The Large diameter augers in all the "P" Series Mixer feeders are capable of giving the mix required, from rations with well cured, long stemmed legume-type hay, to mixes with green grass, and mixes with silage and commodities. Better milk production, better weight gains and greatly improved animal health are just some of the results of a finely-tuned feed ration.

GET DETAILS ON THE ENTIRE RANGE OF LUCK//NOW MIXER FEEDERS

- CANTON, PA**
HESS FARM EQUIPMENT
RR 3, BOX 160
- LEOLA, PA**
M.M. WEAVER & SONS
169 NORTH GROFFDALE ROAD
- FREDERICK, MD**
DOODY MECHANICAL SERVICE
PO BOX 3773
- CLIFFORD, PA**
NORTHEAST DISTRIBUTORS & EQUIPMENT
ROUTE 106, WEST CLIFFORD, OFF I81
- LOYSVILLE, PA**
MCMILLEN BROS.
RD #1 - BOX 134
- MARTINSBURG, PA**
WINELAND EQUIPMENT, INC.
R D #2, ROUTE 164 EAST
- GREENCASTLE, PA**
MEYERS IMPLEMENT
400 N. ANTRIM WAY
- MIFFLINBURG, PA**
HESS EQUIPMENT SALES & SERVICE
RR 3, BOX 160
- LINEBORO, MD**
WERTZ FARM EQUIPMENT
PO BOX 75
- MASSEY, MD**
JONES DAIRY SERVICE
12667 MASSEY ROAD



Distributed By:
CUMMINGS and BRICKER, Inc.
 WHOLESALE DISTRIBUTORS

100 Stover Drive
 Carlisle, PA 17013
 717/249-6720

100-120 Lehigh Ave. - P.O. Box 928
 Batavia, New York 14021-0928
 716/343-5411

OPEN: Monday thru Friday 7:30-4:30, Saturday 8 to 12

717-866-2585 • 1-800-441-4450

Serving Farmers Through Farm Equipment Dealers Since 1961