

GOOD'S AG SERVICE

Liquid Fertilizer Sales & Application

100% Ortho	9-18-9 5-15-15 3-18-18	Poly & Ortho	6-24-6 10-34-0	30%N 7-21-7
------------	------------------------------	-----------------	-------------------	----------------

CFS Waxy Corn, Soybean & Alfalfa Seeds

- Liquid Calcium
- Agri-SC Soil Conditioner
- Boron 10% Liquid
- Compostore Pit Additive
- Ammonium Thiosulfate Liquid 12-0-0-26s
- Agrox Seed Box Treatment
- Custom Corn Planting.
- Custom Liquid Fertilizing

For more information:

DALE GOOD - 717-949-2371
ASK ABOUT EARLY DISCOUNTS

Christmas Trees, Wholesale, Douglas Fir. 610/797-4960, 610/434-3943.

Christmas Trees: Cut and B&B. High quality. Cut: Douglas Fir, Scotch Pine, White Pine, Concolor Fir B&B: White Pine, Colorado Spruce, White Spruce, Canadian Fir, Douglas Fir. (717) 667-6447 (717)667-2229 Fax

Christmas Trees wholesale: Douglas Fir, Scotch Pine, White Pine, Blue Spruce, Serbian Spruce, Hemlock, cut or B&B. Large trees, greens, excellent quality, near Harrisburg, PA. (717)938-1954.

Christmas Trees. Blue Spruce, Firs, Pines, Penna. grown. 302-834-9160

EVERGREEN SEEDLINGS & TRANSPLANTS.

Spruce, Pine, Fir for Christmas trees & nursery stock. Write or call for price list. Croshaw Nursery, P.O. Box 339, Columbus, NJ. 08022. or call 609-298-0477

Firs- Spruces- w/p. Cut or dig \$12. You tag. Orwigsburg 717/366-0790.

Howey Christmas tree baler, Honda engine, Model 210RC, late model, low hours, excellent condition, \$5000. 717/362-3773.

Japanese Maples, Fall Special, 2 year 1 gallon high grafts, Red Select, Garnet, \$8/each, 18"-24"H. 2 year 1 gallon Bloodgood Maple, \$7/each, 10"-12"H. (908)369-5899.

LANDYSHADE MULCH PRODUCTS 717-898-7689. Mushroom Mulch 100bu, \$70; 500bu, \$170, 1200bu \$198. Mulch delivered FREE within 25 miles of Lancaster. We carry Bark Mulch, Topsoil

Powered rotary dirt screen 10 ton per hour, \$5,000. (814)371-2489.

Premium Douglas Fir Christmas Trees: 6'-10', \$14 Mosteller Farm of Quaker Hill, (717)435-2042.

Premium quality cut Douglas Fir, 5'-10'. Large quantity commercial grade Douglas 5'-9', premium 6'-8' Blue Spruce, B&B White Pine, Norway White and Blue Spruce 3'-8'. Conaways Pine Haven Farms, Newville, PA, (717)486-5423.

Quality Douglas Fir and Blue Spruce, wholesale, cut Christmas trees. Palmer Christmas Tree Farms, Northampton County, (610)588-0223.

Arentz Tree Farm

Douglas Fir 8'-12' or more

(717) 359-4689

Adams County, PA

HENRY'S TREE FARM

226 6th Ave. Burnham, Pa. 17009

717-248-3407



Cut Trees Available for Wholesale 1997

Premium Douglas fir 6'-8' \$15.00
Douglas fir 8'+ \$17.00
Scotch pine 6'-8' \$10.00
#2 Scotch pine \$6.00

20 TREE MINIMUM ORDER REQUIRED

Growers of Quality Shade, Evergreen & Flowering Trees, Evergreen & Deciduous Shrubs and Perennials.

Installation Available

Call for Prices.



LANDSCAPE & NURSERY, INC.

RD 2 Schuylkill Haven 717/739-4650

- Douglas Fir
- Concolor Fir
- Blue Spruce
- White Pine
- White Spruce
- Norway Spruce
- Black Hill Spruce
- Hemlock
- Arborvitae
- Maple Trees
- Dogwoods

Cut and B&B

FINE QUALITY • AFFORDABLE PRICE Delivery Available Custom Tree Digging & Planting Available



P.O. Box 198 New Ringold, PA 17960 (717) 386-2107

SEBELIN TREE FARMS

Beautiful Douglas Fir Colorado Blue Spruce

Hand Sheared for Quality

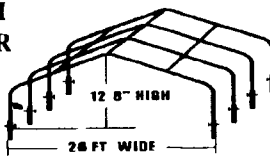
Reasonable Prices 579 Ben Salem Rd. Leighton, Pa 18235

Call for Price List 717/386-2855

GREENHOUSE FRAMES AND GROUND SLEEVES

BUY DIRECT FROM PIPE WHOLESALER

GOTHIC DESIGN To Better Handle Snow & Ice Loads



All Pipe is Schedule 40 Hot Dipped Galvanized 26 FT. X 96 FT. FRAME—\$1,995.00 14" WIDE COLD FRAMES ALSO AVAILABLE!!!!

H. SCHWARTZ & SONS STEEL PIPE CO. THE STRUCTURAL PIPE SPECIALIST (302) 656-0276 (800)523-3500

GROFF TREE MOVING SERVICE

Contract Digging 24 to 84" Ball (B&B) Any Amount - Anywhere - Buy Sell Wholesale Call Don 717-664-4587

HALABURA TREE FARMS

Quality Douglas Fir, White Pine, Blue Spruce Cut and B&B Available. Reasonable Prices Large Tree Transplanting also available with Big John 80 inch spade

RD 1 Orwigsburg, PA (717) 943-2137 • John (717) 943-2499 • Dave

Barchik Tree Farm

Christmas Trees

Douglas Fir, 6' - 8', \$14.00

Other sizes and varieties available.

Call (717) 864-2527 Located in Luzerne Co., Pa.

For Sale: greenhouses, fully equipped with heaters, exhaust fans, benches and more. (1)20x48, (1)26x72, (1)30x100.

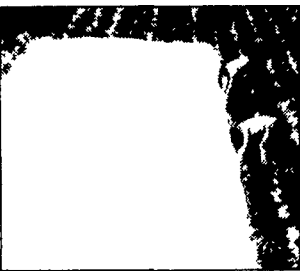
— 610-286-6590 —

Greenhouse For Sale Bids Wanted

The following greenhouse items and generator is being offered for sale, by bid, by the Solanco Little League, Inc Board of Directors Bids are due by Oct 15, 1997 SLL will have the right to accept or reject any or all bids Items may be bid on as a total package or by individual group Items will be available for removal after Oct 30, 1997 and must be removed by Nov 30, 1997 All items must be dismantled and removed by buyer Any electrical wiring that needs rewired for existing needs will be responsibility of buyer Bids to be sent to SLL, PO Box 313, Quarryville, PA 17566 For inspection of items, call Mike Hart at 717-529-6905 for appointment.

- Group 1 - 8-5'x22' floating Ro-Flo aluminum benches with wire mesh bottom 4-4'x8' aluminum benches w/wire mesh bottom
- Group 2 - 32 - General Electric 1000 watt metal halide lights w/24" reflector shades and remote ballasts Includes all switches and Dayton Time Switch Controls
- Group 3 - 14 - 400 watt and 6 - 1000 watt Challenger High Pressure Sodium growing room lights in 12"x20" reflecting fixtures each w/remote ballasts Includes all switches, etc
- Group 4 - Onan 45 Gen Set Generator, 45,000 watts, 1800 R P M, 60 Hertz Currently set up for propane gas Includes Onan DTIII Transfer Switch Control. All complete Must be removed from 10' platform
- Group 5 - 30'x60' Polygal greenhouse built off back of existing building Rests on 4' block walls Includes framework, roof vent, 3-exhaust fans, 2-propane gas heaters and Wadsworth Horticultural Environment Control System

Covertan® - PRO Guaranteed Frost Crop Covers



- * Ahead of time in Nonwovens
- * Excellent Wear & Tear Resistance. Available in PRO 17 & PRO 30.
- * Strong UV Blue Safety Seams-for widths to 60'.
- * 1-2 Day Delivery.
- * Certificate of Quality on each Roll.

Calling Suntex - 1-888 Suntex 1 (786-8391)

(2) FMC sweet corn harvesters, model 11, VG condition. Chester Co, PA, (610)932-5873.

2R Oliver potato digger, enclosed, plant transport trailer, plastic mulch lifter; Zimmerman water wheel planter; 150' greenhouse benches; 16"x16' conveyor w/reversing motor 717/539-2272.

3pth air compressor \$950. Pallet trailer \$950. (410)758-3099.

Beautiful ferns, priced reasonable. Anna Z. Hoover, 323 N. Hoover Ave., New Holland, PA 17557 (red brick house)

Refrigerated sea containers, ideal for produce storage, road side markets, etc. \$1800 UP. Delaware 302-324-9646

19 NURSERY

15,000 Blue Spruce Trees for digging, 5-9', good color. After 6 pm, (717)464-9232.

200 Acres, Pine, Spruce, Fir 5,000 #1 Concolor Fir, 6'-9'. 7,000 #1 Scotch Pine, 5'-7'. 15,000 #1 Douglas Fir, 5'-14'. 400 #1 Grand Fir, 5'-8'. 500 #1 Norway Spruce, 6'-9'. ELLIOTT'S CHRISTMAS TREE FARMS AND NURSERY 717-349-7319 717-349-9916

2 Christmas tree balers: both good condition, 8hp Briggs engines. (1)HD twine baler; Vexar type, \$650 each OBO. (717)834-3996.

34B Big John tree spade, good condition, \$4,500. 24" Rokor tree spade, \$2,500. Both skid loader mount. (717)386-2107.

Bark mulch and mushroom soil, trailer loads and smaller loads also available. Garman's Coal and Mulch Products, (717)653-9580.

Christmas Trees: Douglas Fir, \$14, 5-8', nicely sheared, top quality, discounts over 100 Also available Blue Spruce, Showvaker's Quality Evergreens. (410)374-1499.

Sheared Douglas Fir \$6.50/Each, Less Than 100 \$8.50/Each; 18' Douglas Fir For Wreaths \$4.50/Each. Klingertown. 717-758-9177

TREE PLANTERS: 3 models, plant trees from 3" seedlings to 10' shade trees. Rentals also available. Also Available: Tree Boss-for B&B-a 1-MAN tree loading and unloading system. TREE PLANT DESIGN INC. RD 1, Box 104, New Ringgold, PA 17960 717-386-3515.

Interested in Wine Grape Growing?

The Pennsylvania Southeast Grape Association (SEGA) has an excellent program with two grower meetings each year and a valuable, informational newsletter. For information, write to:

SEGA, French Creek Vineyard 200 Grove Road, Elverson, PA 19520 Phone: (610)-286-7754 Fax: (610)-286-7772

HOWDEN PUMPKINS

Finest Quality at Competitive Prices!



- Prize Winners Spookies
- Baby Pams
- J B L s
- Gourds
- Indian Corn
- Corn Shocks

Delivered anywhere on the East Coast Truckload lots in bins or bulk

Pleasant Hill Farm Hanover, PA 717/637-7586 nights, 717/633-7002 days

DON'T LOOK ANY FURTHER!

YOU'LL FIND IT IN LANCASTER FARMING'S CLASSIFIEDS

FOR SALE



OLATHE SWEEPER/THATCHER 20 HP High-Lift Dump, Real Good Condition

\$4,995

CALL 717-274-2000