

SAT OCT 4 - 10AM Ridge Fire Co., Along Rt 23, btwn Phoenixville & Rt 100 Fritsch coll of Lionel trains in the pavilion Railroad artifacts & souvenirs in the Blue Room Ted Maurer, Auct

SAT OCT 4 - 11AM Clydesdale Sale for Carson Farms, featuring 50 head of our very best top show and breeding animals Carson's Auction Service

SAT OCT 4 - 1PM Mountain Top, Wright Twp., Luzerne Co PA '86± ac, 2 story log home 4

bedrooms, 2-3/4 baths, 40x82 barn Lettner Bros Auction Co 1-800-936-6564

MON OCT 6 - 9AM Along Pughtown Rd., 1 mi E of Rt 100, East Vincent Twp., Chester Co, PA Farm equip & antiques By George Inhof Horning Farm Agency 610-286-5183

MON OCT 6 - 10AM Cow herd (disp, farm, equip, & cattle PERRY CO FARM By Dr Burleigh Anderson, Meadow Mist Farms

TUES OCT 7 - 10:30AM Bloomville, NY Lutzland Grade Holsteins Complete Dispersal

230 head The Cattle Exchange

TUES OCT 7 - Fed Cattle Sale Carlisle Livestock Market, Inc (717)249-4511

TUES OCT 7 - 5:30PM Wintersville, rd., Richland, Tulpehocken Twp., Berks Co., PA 24 acre Country real estate, tractor & landscape equip By Henry Long Harry Bachman, Auct

TUES OCT 7 - 7 PM Feeder pig sae Westminster Livestock Auction, Westminster, MD 410-848-9820

TUES OCT 7 - 7:45PM Feeder Cattle Sale Carlisle Livestock Market, Inc (717)249-4511

WED OCT 8 - 5PM 40 mi N of Harrisburg, at Kevin's Place (formerly Shop & Play Hall), Rt 209, Lykens, PA Trains & accessories, the collection of the late Martin A Pajka, Jr By Maureen A Pajka Dockey Auction Service

WED OCT 8 - 10:30AM Bloomville, NY Lutzland Machinery Dispersal The Cattle Exchange

WED OCT 8 7:30PM Feeder sale Four States Livestock, Hagerstown MD 301-733-8120

THURS OCT 9 - Wen-Mar Holsteins Complete Dispersal Location to be announced Mark &

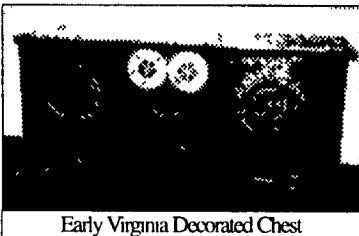
Wendy Douglas Middlebury Center, Pa owners The Cattle Exchange

THURS OCT 9 - 6PM Rt 147 N to Community Banks, Halifax Office, E onto Powells Valley Rd App 4 mi to Ridge Rd, signs Powells Valley, Wayne Twp Dauphin Co, PA Sparkling Runs Hunting Camp 137 acres David Deibler & Ed Shoop, Aucts

FRI OCT 10 - 9AM Farm Equipment, Tractors & Farm Supplies Located at 100 W Jackson St., New Holland, PA 17557 A & C Diffenbach Auction Inc

# Important Auction of Country Americana

to be held  
**SATURDAY • SEPTEMBER 20th • 1997**  
beginning at 8:00 am at the  
**COCHRAN AUCTION COMPLEX**  
**BOONSBORO • MARYLAND**  
*"An exceptional collection of over 25 years of local  
country Americana"*



Early Virginia Decorated Chest

The sale will begin with furniture in the rough and an assortment of antiques, store cupboards, large marble countertops, etc We will then move to the main auction room and sell by catalog a most important mahogany tall case clock by Jacob Craft - made for the McSherry family of Jefferson County; a birth certificate dated 1798 naming Jacob Craft as the godfather of the child, a rare pewter flagon - marked ICH - made by Johann Christoph Heynes of Lancaster, PA - 1756-80, an exceptional collection of over 60 baskets including many miniatures, rare, small yellow pine hooded pewter cupboard from Martinsburg, only 34" wide, (2) signed John Rupp painted chests of drawers, one with matching bed and two-drawer stand; (2) painted Virginia pie safes, one with bird tins; small red corner cupboard with raised panel doors, painted-decorated blanket chest with geometric designs, a vibrant blue Chippendale blanket chest, a large selection of redware including Shenandoah Valley, Shepherdstown and Hagerstown, miniature redware and ovoid jugs, Civil War painting of Vicksburg, polka dot table and stool, period English wing chair, period Virginia wing chair, Windsor arm and side chairs, (11) Shenandoah Valley ladder back chairs, quilts and coverlets including a signed Chambersburg, an exceptional collection of early English ceramics, a Hepplewhite spinet by John Broadwood & Son, London - 1799; a cherry two-part glass door corner cupboard, (2) astral lamps, an arch door painted-decorated two part corner cupboard, an untouched molded-leg drop-leaf with shaped apron, copper including signed Shepherdstown tea kettle and (2) signed measures date 1834-36 from Selena, walnut Victorian marble top console table, set of (6) painted country chairs, elegant inlaid Federal shaving mirror; an unusual store-keeper's desk, large Empire half column mirror; Federal and Queen Anne style card table, walnut Hepplewhite swing leg drop leaf table, early chimney cupboard, early Bible cupboard, early Pennsylvania saw buck table, two early dulcimers - one Pennsylvania and one Virginia, paint-decorated glass door 2 part corner cupboard - Lehigh Valley, Pennsylvania, circa 1815, walnut bird cage dish top table, probably Virginia - circa 1770, original surface, walnut Queen Anne blanket chest w/drop pendant, Virginia - circa 1750-60, original surface, pair of urn finial brass andirons w/matching tools, Philadelphia - circa 1790;



English Ceramics

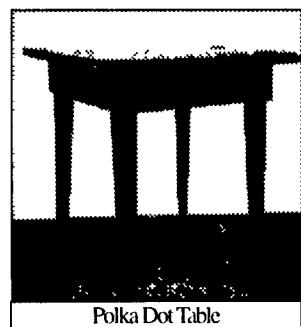
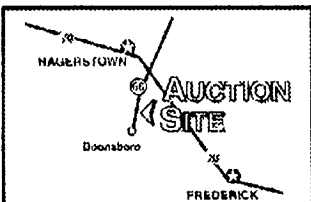
pair of oriental runners; green painted cradle w/heart cut outs, Karaje area rug, Federal paint decorated wash stand, pair of green decorated arrow-back Windsors branded "Warren Hill" - untouched condition, walnut farm table w/2 drawers and tapered legs, large farm table w/four board top; flat wall cupboard (linen press) - two-doors over two-doors, sterling silver, wicker plant stand, original painted decorations, early child's wicker chair; painted frames, tins, early broom, Shaker whisk broom, carved whimsies, many punched tin panels, some dated, cookie cutters; decoys, including pair of hollow ones; drawings; paintings; early letters, children's books, children's chairs, decorated stoneware, classical mahogany sofa, and many other items too numerous to mention.

**FOR A FREE FULL COLOR BROCHURE COMPLETE WITH PHOTOS, PLEASE CONTACT THE AUCTION COMPANY AT (301) 739-0538 OR 1-800-310-2844.**

**DIRECTIONS:** The Cochran Auction Complex is located 4 miles south of Exit 35 off Interstate 70 along Maryland Route 66 at Boonsboro, Maryland

**TERMS include cash or approved check on day of sale with positive identification required for registration. Food and facilities will be available on site.**

**ABSOLUTELY NO BUYERS PREMIUM**



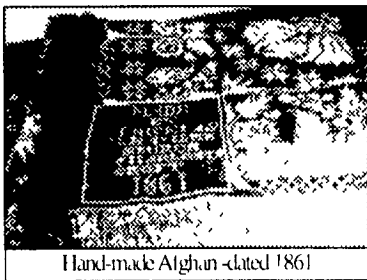
Polka Dot Table



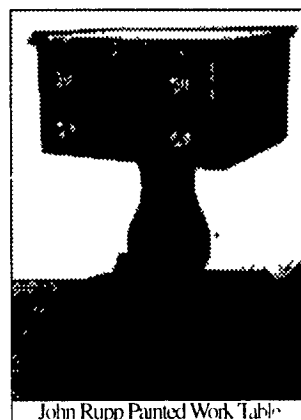
Flagon marked ICH Lancaster, PA-1756-80



Painting of Vicksburg-Signed FH Huntley Sayre, PA -1877



Hand-made Afghan -dated 1861



John Rupp Painted Work Table



**J.G. Cochran**



**AUCTIONEERS & ASSOCIATES LTD.**  
Professional Auctioneers & Appraisers Since 1972  
7704 Mapleville Rd., P.O. Box 222  
Boonsboro, MD 21713-0222  
(301) 739-0538  
PA Lic. #(AS000832-L)

- Please Clip This Detailed Ad For It Will Appear Only Once. -

**REMINDER!!**  
**MONTHLY TWO DAY SALE OF FARM EQUIPMENT**

at our place of business located 6 miles south of Chambersburg, PA 1 mi. E. off Marion, just E. off I-81 at Marion (Exit 4) along Rt. 914

**Wednesday, Sept. 17, 1997- 8:30 A.M.**  
Lawn & Garden Tractors, Misc. Items

**Thursday, Sept. 18, 1997- 8:30 A.M.**  
Misc. Items, Tires, Posts, etc.  
**10:00 A.M. - Farm Equipment & Tractors**

New 3 pt. equipment sold daily.  
We accept consignments daily.

M-F 8-5 Sat. 8-1 Closed Sunday  
Next Sale Oct. 15, 16

**Marion Auction Service**  
Jerrold L. Jr. & Gloria Oaks  
5174 Horst Rd.,  
Chambersburg, PA  
717-375-4700 Lic. #AH-89-L

**PUBLIC AUCTION**  
OF  
**Thomas A. Taggart, Jr. Gun Repair Shop**  
**GUNS**  
Pistols - Rifles - Shotguns  
**GUN PARTS**  
**RELOADING EQUIPMENT**  
**GUN BOOKS AND MAGAZINES**  
**FISHING RODS**  
**HOUSEHOLD GOODS**

**SATURDAY, SEPTEMBER 20, 1997**  
**AT 10:00 AM**

**328 Nolt Avenue, Village of Willow Street**  
**Lancaster County, PA**  
From Lancaster take Rt 272 South through village of Willow Street. Continue past Kendig Square Shopping Center Turn Left onto West Willow Road Turn Right onto Nolt Avenue.

**JESSICA ANN SHAUD AUCTIONEER** Auction for **Dorothy Taggart**

Phone (717) 786-8919  
AU 003414 L

*Pennypacker-Andrews*

**AUCTION CENTRE, INC.**

AUCTIONEERS - APPRAISERS - LIQUIDATORS

**REAL ESTATE AUCTION**  
**VALUABLE 78 ACRE M/L UNION COUNTY FARM**  
**(Circa 1830) 2 1/2 Story Brick Homestead House, Large Frame Bank Barn And Other Buildings**  
**SAT., SEPT. 27, 1997**  
10:00 A.M. Farm Related Items  
11:00 A.M. Real Estate

Located Along Cross Roads & White Deer Churches Rd., Lewisburg, PA, Kelly Township, Union Co.  
**Directions: From Lewisburg, PA Take Rte. 15 North to West Milton Exit, Turn Left Off Exit, Continue To White Deer Churches Rd. (Approx. 2 1/2 Miles)**

**Open House Inspections:** Sat Aug 30th Sat., Sept 6th & 13th - 1 00 PM to 4 00 PM

Homestead House Features Colonial Kitchen w/Walk in Fireplace & Exposed Hand Hewn Beams Living Room w/Fireplace, Summer Kitchen/Dining Rm Comb w/Walk In Fireplace Laundry/Pwr Rm Foyer Master Bedrm w/Pine Plank Flooring & Fireplace (3) Bedrms w/Fireplaces Dressing Rm Bath Tool Shed Lg Frame Bank Barn w/Attached Frame Broiler House Implement Shed

Excellent Location With Large Amount Of Road Frontage, 5 Minutes From Interstates 80 & 81 Route 15 Approx 60 Acres Of Open Tillable Land w/Remainder in Woods Bush Terrain is Gentle to Rolling Slope The Farm is Currently in The Clean & Green Act Realtor Participation Welcomed

**Terms: 10% Down Day of Auction, Full Bal. In 60 Days.**

For Brochure #27 Contact Auction Co  
STARTING AT 10 00 A M An Auction Of Farm Related Items Will Be Sold In Lots Consisting Of Wood Lumber Tools Cabinets, Rough Furniture C I Bath Tub, Fuel Tank, Etc BE PROMPT!!

Auction For:  
**George E. Neuman Estate**

Auction By:  
**Pennypacker-Andrews Auction Centre, Inc.**  
Cathy M. Pennypacker-Andrews  
Lic. #AU-001254-L  
Luke R. Witman  
P.O. Box 558, Shillington, PA 19607-0558  
(610) 777-6121 or 777-5890