

PUBLIC AUCTION

7 Acre Farmette - Nursery Stock & Equipment - Tractor

Monday, September 29, 1997

9:00 AM

4510 North Sherman Street Ext'd. (Starview) Mount Wolf, PA

11:00AM REAL ESTATE 11:00AM
7 Acres of level land w/ road frontage on Rt. 24 of approx. 390' improved w/ a 2 1/2 story frame house with vinyl siding, apartment in separate building, frame barn, 4 bay block garage & block & metal storage building, plus other out buildings, macadam-driveway. House has 1 1/2 baths, large kitchen, L shaped living room w/ wall to wall carpet, 3 bedrooms, 2 enclosed porches, and patio. Apartment has kitchen, living room, bedroom & bath all carpeted, w/ separate electric meters, mature shrubbery & shade trees surround house w/ large yard area. TAX MAP AVAILABLE.

TERMS 10% DOWN BALANCE DUE IN 60 DAYS SHOWN BY APPOINTMENT PHONE 266-4219 OR 764-6412

9:00AM NURSERY STOCK-ALL DUG & BALLED 9:00AM
Douglas Firs, Colorado Blue Spruce, Norway Spruce, White Pines, Hemlock, Perennials, Yews, Juniper, Holly, Box Woods, Cypress.

SHADE TREES-STILL PLANTED

Birch, Locust, White Birch, Mountain Ash, Crabapple, Bedford Pear, English Walnut, Purple Leaf Plum & Etc.

NURSERY SUPPLIES-TOOLS-FERTILIZER-SPRAYS-ETC

APPROX. 12:30PM EQUIPMENT APPROX. 12:30PM

J.D. 300 Tractor w/ Loader & 3 pt. Hitch, J.D. 3 pt. 6' Flail Mower, 8' X 16' Dump Trailer 10,000 GVW, 8' York Rake, 3 pt. 1X Plow, 8' Drag Disc, 500 Gal. Water Tank - for Truck Bed, 500 Gal. Water Tank on Trailer w/ 5 hp. Motor & Pump, 50' & 100' Hoop Houses, 50/50 Shade Cloth, Overhead Sprinkling Irrigation System, 5 hp. Log Splitter, Lawn Dump Trailer, 12' Aluminum Flat Bottom Boat, 3 pt. 6' Aerator, 3 pt. 2 Row Cult., Post Hole Digger w/ 12" & 40" Augers, 30" Hedge Gas Clipper, Echo Back Pack Sprayer, 4 Rolls of Snow Fence, Walk-Behind Tiller, Misc. Hand Tools, Rakes, Shovels, Picks, Etc., Landscape Rock, Wheelbarrow, 2 Kerosene Heaters, Spray Booms, Nursery Pots, E-Z Fertilizer Feeder, Glass, 6' Work Bench, 3 Cord of Firewood.

TERMS: CASH OR GOOD CHECK

Seller:
Nature's Helper
Terry L. Nixon
717-266-4219

Auction Conducted by:
Rentzel's Auction Service
Emigsville, PA
717-764-6412, PA Lic. #761

PUBLIC AUCTION

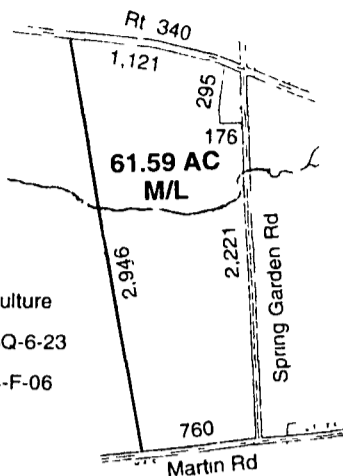
61.5 ACRES M/L

VALUABLE FARM LAND

SAT., OCTOBER 4, 1997

at 1 P.M.

Located in Spring Garden, along Rt. 340, 3 1/2 miles east of Intercourse, PA, Salisbury Twp., Lancaster County.



Zoned-Agriculture

TAX MAP-13Q-6-23

ADC Map-44-F-06

Real Estate consists of 61.59 Ac. m/l with 1,121± feet frontage along the south side of Rt. 340 2,221± feet frontage along the west side of Spring Garden Road, and 760± feet frontage along the north side of Martin Road

The 61.59 Ac. m/l is primarily open farm land with some meadow. A small stream runs through the land plus it has 2 springs

At present the land is in a good state of cultivation

TERMS OF REAL ESTATE; 10% down day of sale with balance in 60 days.

Attorney: R. Douglas Good
Wentz, Weaver & Kling

Sale by

LENA E. DILLER & MARIAN E. KURTZ

JAY M. LEARY & Associates

P.O. Box 406 (717) 354-0423
New Holland, PA AU001214L

Randy L. Leola, PA
Stoltzfus 656-8919
Auctioneers Appraisers

PUBLIC AUCTION

In re the Estate of

Maud V. Moyer, Deceased

SAT., SEPT. 20, 1997 at 12:00 noon

Law Offices of Charles J. Ax, Jr.

14 S. Main St., Middleburg, PA

Public Sale of two vacant tracts of land: 42.090 Acre Tract and 27.546 Acre Tract, both located in Adams Twp., Snyder Co., PA.

Tract No. One consists of 42.090 acres of vacant land, more or less, and is situate just north of S.R. 4018 and west of Port Ann in Adams Twp. There is a considerable amount of timber on this tract. The deed for this tract is recorded in Snyder County Deed Book 43, Pg. 587 and it is designated as Parcel No. 01-02-045 on the Snyder County Tax Assessment Maps. There is no deeded right-of-way for this tract of land.

Tract No. Two consists of 27.546 acres of vacant land, more or less, and is situate along S.R. 4014, and south of Port Ann in Adams Twp. This tract has road frontage on S.R. 4014. There is some timber on this tract. The deed for this tract is recorded in Snyder Co. Deed Book 44, Page 455 and it is designated as Parcel No. 01-05-028 on the Snyder Co. Tax Assessment Maps.

Both tracts of land are being sold as the lands of the Estate of Maud V. Moyer a/k/a Verna Maude Moyer, deceased, and the Estate of Clarence E. Moyer, deceased, pursuant to an Order Directing Public Sale of Real Property issued by the Honorable Harold F. Woelfel, Jr., Judge, dated Oct. 16, 1995 and filed to Equity No. 3 1995 in the Snyder Co. Court of Common Pleas.

Copies of recent surveys and location details for both of these properties are available at the Law Offices of Charles J. Ax, Jr., 14 S. Main St., Middleburg, PA, 17842.

These tracts will be offered for sale individually and not as one unit.

Terms: 10% down at knockoff; balance in 45 days.

Charles J. Ax, Jr., Attorney at Law
Ph. 717-837-0086, fax: 717-837-0090

Bryan D. Imes, Auct.
Complete Auction Service
717-527-2449, AU-001656-L

PUBLIC AUCTION

OF 37 ACRE FARM

AND PERSONAL PROPERTY

Saturday, October 11th at 10:00 A.M.
Real Estate will be sold at 11:00 A.M.

From Birdsboro take Rt. 724E approx 5 mi turn south on Black Matt Rd., go approx 1 mile to property on left Union Twp Berks Co

REAL ESTATE CONSISTS OF 2 sty stone farmhouse, 1st floor has living room, kitchen & bath, 2nd floor has 3 bedrooms, attic storage, full basement, oil hot water heat, on site well and septic system. Stone summer-house. Stone/frame bank barn, lower level box stalls, 2nd floor storage, cement block tack house, cement barnyard, equipment shed for storage, buildings need some work. 25 acres tillable remainder in pasture and woodland, beautiful setting back long farm lane

ZONING: Ag Preservation & LDR

OPEN HOUSE: Saturday, September 20th & 27th from 1-3 PM or by appointment

TERMS: 10% day of sale, settlement on or before November 11 1997

TERMS BY:

William Brower, Nancy Brower and Eleanor Faix



HORNING FARM AGENCY, INC.

Alvin Horning AU-0433-L

Elton Horning AU-0434-L

Merie Eberly AU-2417-L

Route 23, Morgantown

(610) 286-5183

PUBLIC AUCTION

OF VALUABLE 55 1/2 ACRE M/L DAIRY FARM w/STREAM, FULL LINE OF FARM EQUIPMENT

TUES., Oct. 14, 1997

at 9:30 A.M.

Real Estate at 11:00 A.M.

Located between Terre Hill & Fivepointville, turn west off Rt. 897 on Wide Hollow Rd. 1 mile to farm. East Earl Twp., Lanc. Co., PA.

2 1/2 story frame dwelling w/vinyl siding, large eat-in kitchen w/space heater, 3 large rooms, 1/2 bath. 2nd Floor, 4 bedrooms w/closets, full bath, balcony. Full basement w/one car garage, elect water heater, spring & well w/pressure 1 yr old sand mound septic system

FRAME BANK BARN w/35 comfort stalls, 60' extension w/26 free stalls, box stalls, bunk feeder, 2 S S pipeline w/automatic washer, motor & pump, elect water heater, 850 gal bulk tank w/compressor & auto washer
5 SILOS - 20'x50' Harvester w/Goliath Unloader, 14'x40' Harvester w/Grain Auger, 20'x60' Terre Hill w/Badger Unloader, 2 - 10'x40' Concrete, Patz Barn Cleaner, 40'x70' Concrete Manure Storage System, Concrete Loafing Area, 30'x40 Metal Pole Barn w/Concrete Floor, Drive Through Corn Barn, Other Buildings

AUCT. NOTE - Farm is ready to go. Buyer will have first option to rent additional land from Messner Brothers Partnership. Buyer has option of purchase from farmer. Open for inspection Sat., Sept 27 & Oct 4 from 2 00 till 4 00 PM or for appointment call 717-445-5725

10% down day of sale, balance on or before Dec. 1, 1997.

Terms by:

MESSNER BROTHERS PARTNERSHIP
Roger S. Reist, Atty

FARM EQUIPMENT At Same Location

J.D. 5400 Self-propelled Harvester Diesel Overhauled, 2400 Hr., 4 Row Narrow Head, Farmall H-w/ loader, N.H. TR70 Combine Hyst 4 Wheel Drive 15' Flex Grain Head 2200 Hrs., 13' Flex Head, 5 & 6 Row Corn Head, N.H. 415 Discbine 11 6' 2 Yr Old, N.H. 795 Manure Spreader w/Tandem Axle & Tailgate, Mustang 545 Skid w/Perkins Diesel & 2 Buckets, Ford 6000 Commander Diesel w/Wide Front End Select Speed 6200 Hrs., Ford 901 Gas Tricycle 5 Speed 1985 Ford Pickup F150, N.H. 320 Baler w/Thrower, Ford 250 Baler, 2 Hay Bale Wagons w/Running Gears, Dion Forage Wagon w/Right Unloading

2 Grove Forage wagons w/ Tandem Running Gears & Roof

N1 325 Narrow Row Corn Picker w/12 Roll Bed, 3 Gravity Bins w/Running Gear, 2 Flat Wagons, 36' Speed King Grain Elevator w/Motor, 13 Disc J.D. FBB Grain Drill, Glenco 9 Tooth Soil Savor, Athens 12' Transport Disc, 2 Ford 10' Transport Disc, Ford 208 12 Field Cultivator, Burch 4 Row 3 Pt. Cultivator, J.D. 200 Large Square Baler & Stacker, 3 Pt Large Bale Lift, 3 Pt 4 Wheel Rake, 2 - 6' Flail Chopper, PTO Airplane Fan, 3 Pt 3 Tooth Sub Soiler Trailer & 3 pt plow, N1 7', Reaper Mower, 5' Rotary Mower, 3 pt., 9' JD Transport Disk, Peckway Hat Cutter, Pto, JD 9' Harrow, 12' Grain Drill, 2 1/4 hp Circular 24" Fan

12' Wooden Livestock Trailer, Bedding Chopper w/G300 Honda 2 Yr Old, 6 - D V 300 Milkers

15 Ton Mixed Hay & Small Items

Some Household Goods - Cedar Lined Wardrobe, Modern Hutch, Depression Style Chest of Drawers, many other items not mentioned

Terms by:

WILLIS Z. & LINDA MARTIN

717-445-5725

Lunch Available

No Out of State Checks

Aucts.

Robert E. Martin & Sons, 717-656-7770

AU000580L

Cobey self unloading wagon box with roof no running gear, v.g. cond. \$500. 908-359-5934.

85 Dodge Caravan 4 cyl. w/ kept n/insp. tilt, cruise, serv. records \$2000. Berks Co. 610-582-7266.

1943 Ford Bomb. service truck 10,900 GVW 4 wheel drive w/dump 6 cyl. gas engine-stuck \$600. Schuykill Co. 717-345-8179.

Kasten S.U. wagon NH 354 gr. mixer 100 ft. Patz belt feeder, NH 675 spreader w/ pan 36 in. 5 hp dryer fan. After 7 PM. Sch. Co. 717-889-3082.

New Idea 2 row mounted picker, also two wire corn cribs, two gravity wagons and corn sheller. Berks Co. 610-689-5346.

Field corn for silage making. Grain elevator, Kiddie Kruser for two. Lanc. Co. 717-354-8853.

MAILBOX MARKET NOTICE

Home winemaking instructions. Send self-addressed stamped business size envelope. Zion Vineyard, Zion Md., 21901. Cecil. 410-658-2706.

AKC Rotweiler stud service. Call for appointment. Lancaster. 717-738-0717.

Rent- Daglemon Rock Digger (large), backhoe to fit, 1845 Case, \$40 a day. Earth moving pan for your big tractor. Lebanon. 717-272-0041.

Free. Aprox. 25 pounds beef bones for broth or dog food. Lancaster. 717-684-8915.

PA Avicultural Society Fall Tailgate, Sept. 27 at Lake Tobias, Halifax. Buy, sell, trade pheasants, waterfowl, etc., everyone welcome. Juniata. 717-734-3625.

All new Sulky sew exciting seminar 3 Sat. Oct. 25th Cost \$12. Fred Strobel's Sewing in Myerstown. 717-866-5552.

Free fertilizer dry layer manure, you load, local farmers have first chance. Near Quarryville, Lanc. Co. 717-786-9070.

Steel wheels 30 in. center to fit 4230 JD. Berks Co. 610-683-7214.

Rubber stall mats, good cond., reasonable price. Lanc. Co. 717-367-0430.

Straw spreader for JD 4400 combine, IHC 1300 7 ft. 3 pt hitch mower, Bucks Co. 610-346-7709.

318 8V71 Detroit motor will buy in or out of truck, must be working. Leb. Co. 717-273-7769.

New Idea elevator #176 for parts, wings for Int. Vibra shank #45 field cultivator, Silomatic 20 ft. silo unloader for parts. Call between 7 AM - 9 PM. Luz. Co. 717-788-1470.

Old items, 1940 or earlier, banks, pottery, teddy bears, lamps, wind-up toys, furniture, black memorabilia, will return calls. Bucks Co 215-945-0753.

Used bench lathe 6" swing 40" bead 110 or 220 volts. Call 215-843-1276 leave message.

Used deck over 6 ton utility trailer. Bucks Co. 215-345-9395.

Original body for A 1968 M175 Kaiser Jeep Army truck, good to ex. cond. Gloucester Co. 609-478-2478.

Pony, must be tame for young children, ready to drive and ride, give price, leave message. Chester Co. 610-273-2554.

Used 16' and 18' grain bodies in good cond. with or without hoist. Hardy 304-538-6956.

Lawn Mower engine, 6 or 8 HP used good running, used metal roofing. Leave name, number, price. Glou. Co. 609-629-7396.

HUGE ABSOLUTE AUCTION

PRIME TIME RESTAURANT

Restaurant Equipment & Supplies

Wednesday, September 24th

@ 10:00 AM

Relocated to Paxtonia Fire Hall

125 S. Johnson St. Harrisburg

Directions: Rt. 81 N or S to Exit 26, Paxtonia, 2nd light, take right on old Jonestown Rd., left on Johnson St.

★ MOST EQUIPMENT IS LESS THAN 3 YEARS OLD ★ AND IS EXTREMELY CLEAN

Hobart 60 qt mixer, Vulcan gas conv oven, Toledo meat saw, Garland 4 brn gas HD range, Garland HD gas hot top range Southbend upright broiler w/ovn base, Broaster 1800g, Philco dbl fryer w/filter system, 3' Keating mirror top grill, 6' Keating mirror top grill, Univex 12' slicer, Univex potato peeler Savory rotary toaster, 4 slice toasters, South Bend counter top steamer Craig wk top refig w/4 dws, Craig 4' uc work top refig, (2) Craig 8' 4 bay steam tables, Beverage air 6' sandwich table, Craig 6' ref dessert case, Truision octagon rotating display case, Scottman 600# ice maker, Kelvinator 4' fountainette 3 bay HD-ss sink w/dbl 2 bay HD ss sink w/db, (2) Rostone 1 door refig, Toastmaster 3 drawer bunn warmer, Silverking 4' sandwich unit, Wascomat com washer, Panasonic Microwave 2 brn gas range, 6'x8 ss table w/dws, 3x5' all ss table, 2'x2 all ss tbl on casters, 30'x30' all ss tbl w/ba, 4'x30' ss tbl w/cab bate, Hatco heat lamps 3' & 4' units, Full size & 1/2 size pan racks, Pan racks, Grease Trap, Metro wire shelving dozens of units in 3"-4" & 5" sections, Bussing carts, Wattress call system, Dishes, Silverware, Glassware, pots & pans and smallwares to service 200 person restaurant

Beautiful Furniture

Peach tuff back booths - 13 dbls, 9 sing, 4 deuce, 1 bench, 1 corner booth, (84) chairs, (18) 30x42' tables, (2) 5' rnd, (6) Counter stools and much much more

ALSO FOR SALE AT THIS AUCTION

Reposed equipment from Carville Ice Cream (2) 8' Kelvinator frozen food merchandisers, Kelvinator 8' display dipping cabinet, Masterbilt 8'x7' Walkin cooler, Masterbilt 6'x7' low temp flash freezer w/carousel, Glenco 1 dr display cooler, 3 bay ss sink w/dbls, (2) hot chocolate warmers, HB milk shake, and lots of smallwares
Terms: Cash or good Pa. check day of auction. Preview 8 am day of auction.

EQUIPMENT LIQUIDATORS WAREHOUSE

AUCTION COMPANY

Harrisburg, Pa. RY00117-L (717) 233-5773