

# Thompson Tops Junior Steer Show

**JOYCE BUYP**  
York Co. Correspondent  
YORK (York Co.) — Cory Thompson appeared stunned and wide-eyed for the first few seconds after the rump of his 4-H market steer was slapped as the

York Fair junior steer show's grand champion. Then, the 10-year-old, showing for his second year, regained his composure, grinned and led his winning "Buddy" around the arena to the applause of the crowd. The

1,165-pound Angus steer had earlier topped its medium weight division class for the Wellsville junior 4-H'er.

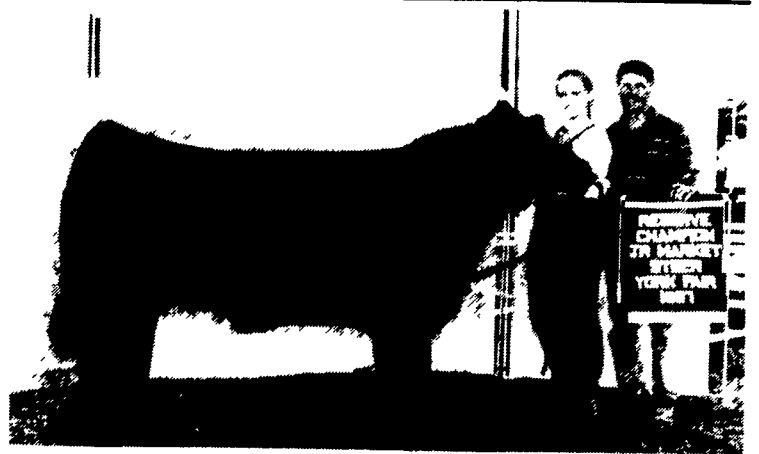
Tapped as the reserve grand champion junior steer was the 1,212-pound Angus light heavy weight winner, exhibited by 16-year-old Tammi Grubb, Hanover.

In the Prospect Steer show, held just prior to the market classes, Tammi Grubb took champion honors with her 1,053-pound Angus, winner of the medium weight class of steers destined for Farm Show competition. Reserve prospect steer winner was Cassandra Hake, Etters, exhibiting the 877-pound lightweight champion.

A partial listing of York Fair junior steer shows follows.

### MARKET STEERS

**Lightweight:**  
Class 17: 1. Donald Sunday.  
Class 18: 1. Cory Welsh. 2. Jamie Reid. 3. Jim Wahiberg.  
Class 19: 1. Paul Kitzmiller. 2. Beth Baer  
Champion - Cory Welsh.  
Reserve - Jamie Reid.  
**Mediumweight:**  
Class 22: 1. Cory Thompson 2. Marie Yost. 3. Amanda Daugherty  
Class 23: 1. Raymond Stough. 2. April Daugherty.



Reserve champion junior market steer at the York Fair was exhibited by Tammi Grubb. Presenting the banner award is Brad Bishard.

Class 24: 1. Tommy Welsh Jr. 2. Philip Baer.  
Champion - Cory Thompson  
Reserve - Raymond Stough  
**Light Heavyweight:**  
Class 27: 1. Richard Heineman 2. Amy Sweitzer.  
Class 28: 1. Tammi Grubb. 2. Hope Long 3. Jamie Welsh.  
Class 29: 1. Bobbi Myers 2. Brett Bishard. 3. Christopher Harcourt  
Champion - Tammi Grubb  
Reserve - Bobbi Myers  
**Heavyweight:**  
Class 32: 1. Jennifer Flinchbaugh. 2. Cassandra Hake.  
Class 33: 1. Kurt Long. 2. R. Jay Rishel. 3. Herman Hake.  
Class 34: 1. Amy Trowbridge.

Champion - Kurt Long  
Reserve - R. Jay Rishel  
Grand Champion Junior Market Steer - Cory Thompson  
Reserve Grand Champion - Tammi Grubb  
**PROSPECT STEERS**  
**Lightweight:** 1. Cassandra Hake - Division Champion 3. Travis Reid  
**Medium Weight:** 1. Tammi Grubb - Division Champion 2. Hope Long - Reserve Champion 3. Herman Hake  
**Heavyweight:** 1. Tammi Grubb - Division Champion 2. Bobby Myers - Reserve Champion 3. Herman Hake  
Champion Prospect Steer - Tammi Grubb  
Reserve Champion - Cassandra Hake.



Cory Thompson and his "Buddy" captured the junior market champion steer title at the York Fair. With the champion's banner sponsor Donald Walter.

## Centre County Dairy Show

CENTRE HALL (Centre Co.) — The Centre County Junior Dairy Show was held Aug. 23 here at the Grange Fairgrounds. Members of Centre County 4-H Club, Mt. Nittany 4-H Dairy Club, and State College, Bellefonte, and

Penns Valley FFA clubs made up the 98 total entrants.

Type judge for this year's show was Tom McCulley, a dairy farmer from Lancaster County. Maranda Dum from Perry County was the showmanship judge. She is a

student at Penn State.

4-H member Charles Liner of Port Matilda exhibited the senior champion/grand champion Ayrshire, Key Way's Rebel April, a dry cow. Buck Gates, 4-H and FFA member, Warriors Mark, exhibited the junior champion/reserve grand champion, Toll-Gate-Ayr Mr E Bonnet, a fall calf. Charles Liner was also the own-

er of the senior champion/grand champion Brown Swiss, 6-year-old Wind Mill Dione Impact Mary. 4-H member Tammi Deibler of Boalsburg was the owner of the junior champion/reserve grand champion, Victory Acres Emory Jewel, a fall calf. 4-H member Keri Connelly of Pennsylvania Furnace exhibited the reserve junior champion, Riverdale Belle. The reserve senior champion, Liners Jetway Mary Dixie, was exhibited by Charles Liner.

Josh Kellerman, a first-year 4-H'er, Centre Hall, was the owner of the senior champion/grand champion Jersey, Four Springs Imperial Jaclynn, a junior 2-year-old. Jessica McMurtie of Pleasant

Gap, also a 4-H member, was the owner of the reserve senior champion/reserve grand champion Jersey, EDN-RU Starbuck Ringo Starr, a senior 2-year-old. Josh was also the owner of the junior champion, Four Springs Counciller Crystal. Josh's older sister, 4-H member, Jennifer Kellerman, showed the reserve junior champion, Four Springs Juno Blanche.

Mary Anne Clouser of Madisonburg, an FFA member, was the proud owner of the grand champion/reserve grand champion Milking Shorthorns. The grand champion was Gladell Hillary, a junior 3-year-old and Gladell Mandie, and 8-year-old

(Turn to Page 37)

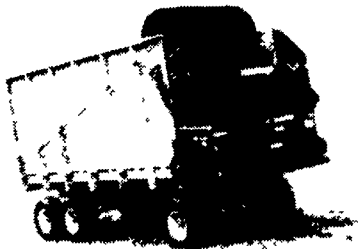
# ZIMMERMAN

MFG. CORP.

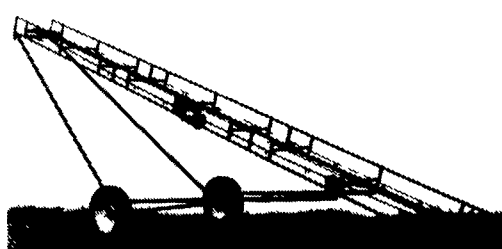
125 King Court/  
Hollander Rd.  
New Holland, PA 17557  
(717) 354-9611

Contact Us For  
Literature Or  
The Dealer  
Nearest You!

990 SERIES FORAGE BOX  
HYDRAULIC DRIVE

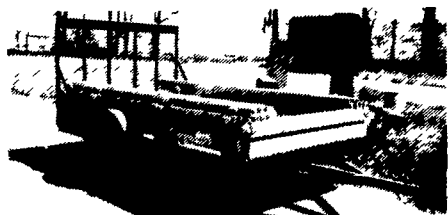


880 SERIES PORTABLE  
BALE ELEVATOR AND MOW CONVEYOR



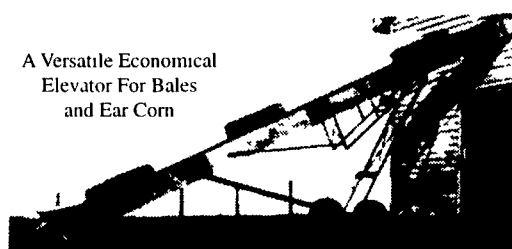
ZIMMERMAN WAGON GEAR  
RUGGED HEAVY DUTY  
MODELS 6, 8, 10, & 12 TANDEM

Check our inventory of trailers  
currently in stock, ready to go.



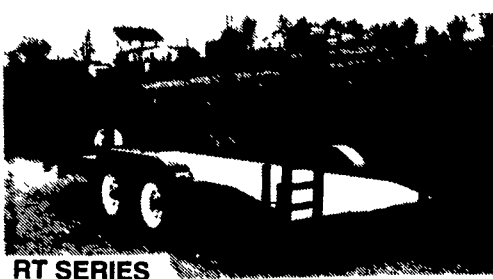
380 SERIES  
PORTABLE ELEVATORS

A Versatile Economical  
Elevator For Bales  
and Ear Corn



WELL BALANCED, RUGGEDLY BUILT FOR MANY  
YEARS OF TROUBLE FREE SERVICE

Zimmerman Custom Built Utility Trailers



RT SERIES



FRT SERIES

RT and FRT Series Trailers Available In 5000# thru 12,000# GVW

Attention  
North Central PA  
& Central PA Farmers  
Broiler Finishing Contracts  
Available  
on New Houses



Good Genes  
Make A Big Difference

Chore-Time's MODEL C2® feeder is the result of more than 40 years of innovative breeding. Here are a few of the traits you get from the Chore-Time bloodline

- Labor-saving Feed Windows.
- Chick-friendly Feeder Grill Design
- Unsurpassed feed converting ability.

For more information call  
1-800-673-2580  
ask for Jay Kreider

Authorized CHORE-TIME Master Distributor Since 1982

Northeast agri systems  
Northeast Agri Systems Inc.  
Flyway Business Park  
139A West Airport Rd. 13  
Litz PA 17543  
Ph: (717) 569-2702  
1-800-673-2580

Delmarva State  
1000 N. 1st St.  
P.O. Box 1000  
New Castle, DE 19720  
1-800-735-6361

Northeast  
agri  
systems

CHORE-TIME  
Dedicated to  
PRODUCT  
LEADERSHIP™