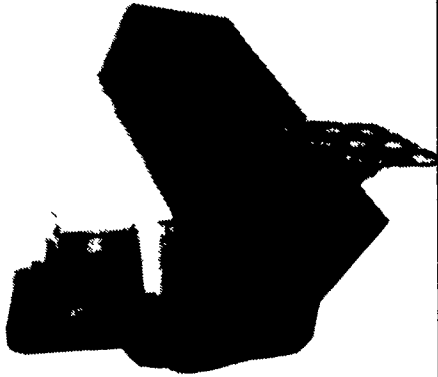


F.M.I NOW DOES TRUCK WORK!

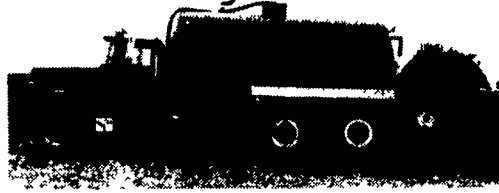
- Truck Bodies Mounted
- Frame Work Done
- Axle Moved
- Hydraulic Systems Installed and Serviced
- Custom Fabrication and Welding

717-626-2680 F.M.I.

Feedmobile Inc. SALES • PARTS • SERVICE
For Over 30 Years
727 Furnace Hills Pike, Litz, PA 17543



86 GMC 10,500 GVW
12 foot Omaha Bed 7 ton hoist
350 engine 1 owner
\$5900 (717) 665-9463



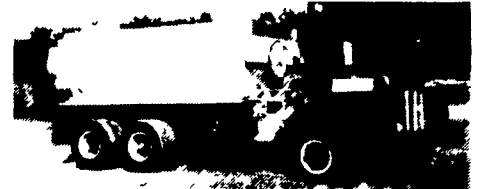
1989 Mack 350 HP, 10 Speed, 4500 Gallon
With Injectors, Flotation Tires
(717) 733-7226

1993 Ford F-350XL, EF17.5LV8, 5spd overdrive, dual wheel, crew cab, like new, low milage, custom counsel, helper springs, towing package, running boards, stainless wheel, wind deflector, dual tanks. (610)921-9256 days (610)944-0531 eve.

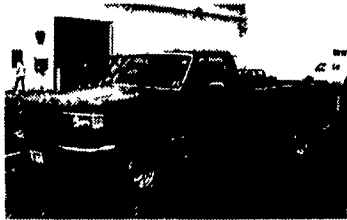
Engine for sale: Chevy 6 2, very low miles. 3208 Cat, very low miles. Also other engines & parts. 610-944-9871 after 6pm

For sale: 24ft aluminum Eby cattle body, like new, \$4000. PH (717)689-2963

1993 Hudson trailer, 18' w/ ramps, pentle hook, \$1495 (717)369-4115



**Stainless Steel Dump
Lime Spreader Truck
1979 White Expediter**
w/Jake, Heavy Specs, With Agitator,
Ready for Work
\$23,900
717/684-6680



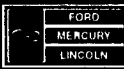
1995 EDDIE BAUER
F150

4x4, V8, Automatic, Loaded,
Clean, Only 22,000 Miles
#P3215
With This Ad Pay Only **\$18,999**



1993 FORD F150 4x4
Super Cab, VA, Auto, Clean, Air,
Only 59,000 Miles, #P3166A
BLOWOUT PRICE \$14,999
Was \$16,999 **NOW \$16,499**

Unless the Chapman Emblem is on Your Car or Truck... You Probably Paid Too Much!



CHAPMAN LEBANON



-20th & CUMBERLAND STS - RT. 422 WEST
9-9 DAILY 9-5 SATURDAY • SHEEHY HOTLINE (717) 272-7671 OR 533 5293

PARTS DEPT OPEN
DAILY 9-5
SAT 9-12
717-273-8168

USED TRUCKS



'96 GMC Extended Cab 2500 4x4 SL Vortek
350 Auto Overdrive PS PB Cruise Tilt PL
AM/FM Cas 410 Limited Slip Rear Local 1
Owner 18 000 Mi
\$22,900



'96 Chevy 3500 4x4 6.5 Turbo, diesel suto
overdrive PS PB A/C AM & FM Stereo 410
Limited slip rear 29 000 mi Red
\$21,900

MARTIN'S AUTO SALES
1025 W. Main St. New Holland, PA 17557
(717) 656-6621

Ford F700, '81,
55K miles,
stake body dump,
boxes, hitch
\$2,500
Ford LN750, '77,
76K miles,
stake body dump,
boxes, hitch
\$1,800
Trail King TK20,
'88,
10 ton trailer,
electric brakes
\$4,250
(301) 663-8888

'78 Ford L9000
diesel
w/20' silage and
grain dump,
hydraulic endgate
\$7,500
'74 Ford L900 gas,
w/18' silage and
grain dump,
hydraulic endgate,
8 years old
\$4,800
(814)793-2339

BIG BEN- Truck towing device. Makes any tractor into a tow truck. Complete w/all accessories. \$1200 (302)324-9646

Dump truck, grain, 1966 Int., 50,000 GVW, tandem axle, excellent condition, \$5500. 717/589-3614 evenings.

EBY
USED
EQUIPMENT

BODIES
(3) 10' Eby Cattle Bodies
(1) 16' Wooden Cattle Body
GOOSENECK

1995 Eby 24'x7'
1995 Eby 22'x8'x8'
Double Deck Trailer
1991 Hillsboro 16'x7'
1988 Featherlite
22'x8'x6'6"
1987 Barrett 26'x7'x7'
1978 Eby 22'x8'x6'6"

M.H. Eby, Inc.
1194 Main Street (Route 23)
Blue Ball, PA 17506
(717) 354-4971 (800) 292 4752
FAX (717) 355-2114
4435 State Route 29
West Jefferson OH 43162
(614) 879 6901 (800) 752 0507
FAX (614) 879 6904

IN ALUMINUM BODIES EBY BUILDS IT

M H Eby custom-builds aluminum truck bodies for the agri-transportation market Nobody offers more sizes and options in

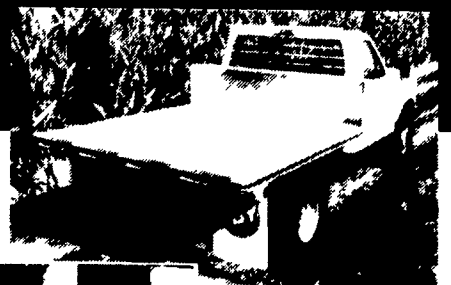
- **FLATBED BODIES** - Lengths to 32', choice of 5 widths
- **GRAIN BODIES** - Lengths to 24', landscape and general purpose dumps to 12'
- **LANDSCAPE BODIES** - Lengths to 12', We'll build to your specs!

For greater payload capacity, Eby's aluminum design is equal in strength to steel and up to 40% lighter Our corrosion-resistant components never need painting That means minimum maintenance, improved appearance and higher resale value

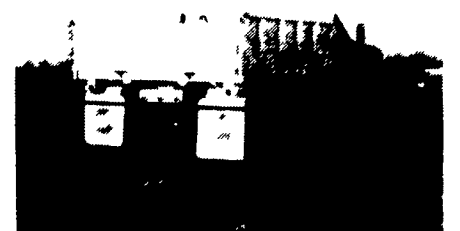
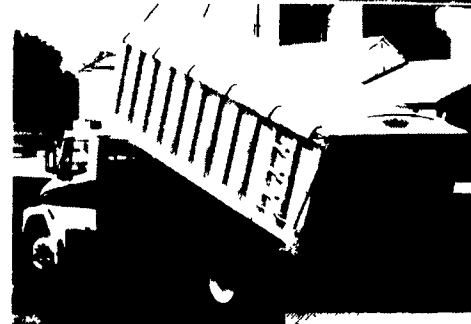
Eby products have superior standard features And we offer customer options for virtually any application Agriculture is your business - **building bodies to haul it is ours.**



1194 Main Street
Blue Ball, PA 17506



Let EBY
custom build
one for you.



800-292-4752

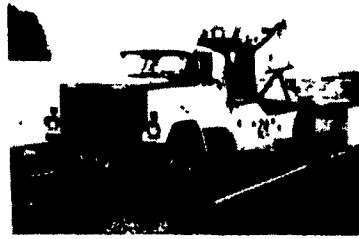
USED TRUCK SALE!



1988 Chevy, C70 23 000 GVWR, 427 Gas, 55P
Trans, Hyd Brk 159 000 Miles **\$5,950**



1984 IH, C09670 XL Series, NTC 300 Cummins
9 Speed 860,000 Miles **\$4,750**



1973 GMC, Model 9500 (1985 CAB) 750 Holmes Wrecker
Body, 238 Detroit, 13 SP Trans / 2 SPD Rear. In Daily Use
By This Dealership! **\$17,950**



1987 Chevy, C70, 33,000 GVWR 366 Gas, 55P/2 SP Rear
Air Brk, Midwest Grain Body, 2 Way Hoist, 119,000 Miles
\$11,850

GET
MORE
TRUCK
FOR
YOUR
BUCK
AT
BERGEY'S!

ONLY MINUTES OFF EXIT 31 OF PA TURNPIKE... CALL FOR DIRECTIONS



Bergey's
EXCELLENCE SINCE 1924



SHOWROOM
HOURS:
M-F 9A to 9P.
Sat 9A to 4P

CLOSED
SUNDAY

ROUTE 113 • FRANCONIA, PA 18924
24 HOUR SERVICE • (215) 721-3400

24 HOUR
PARTS &
SERVICE
CLOSED SUNDAY