

Simmental Association Holds Field Day

ELLCOTT CITY, Md. — The Maryland Simmental Association Field Day was held at the Howard County Fairgrounds.

Dr. John Bargeloh, Southern State, manager of ruminant nutrition, was introduced by Rick Lawrence, the local Southern States field sales and tech manager. Bargeloh described mineral utilization in various feeding systems. He concentrated on the utilization of the trace elements in forage and pasture programs.

Ned Sayre of Waffle Hill Farm continued the seminar. The program consisted of explanations of pasture utilization by using electric fencing to rotate pastures, to increase leaf surfaces rather than stem surfaces. Stock-piling fescue growth was described for year-round grazing. Water distribution was described and products were shown to imitate the programs.

The Junior Cattle Show was judged by Ned Sayre. The showmanship contests of three classes were judged by a committee.

Shane Smithson, White Hall, Md., became champion showman.

Judge Sayre selected Pond View Tobassy shown by Shane Smithson in the January 1997 and later class. Shane Smithson was 1st in the November and December 1996 class.



Tiffany Harward with the champion steer.

C.F. Alfalfa Autumn, shown by Grant Coleman, Elmer, N.J., won the September-October class. Keith Brown Jr., Joppa, Md. with Folley's Red Sunset Kasey, was at the lead of the July-August class. Geneva of Echo Valley, shown by Tammy Nelson, Forest Hill, Md., won the March class.

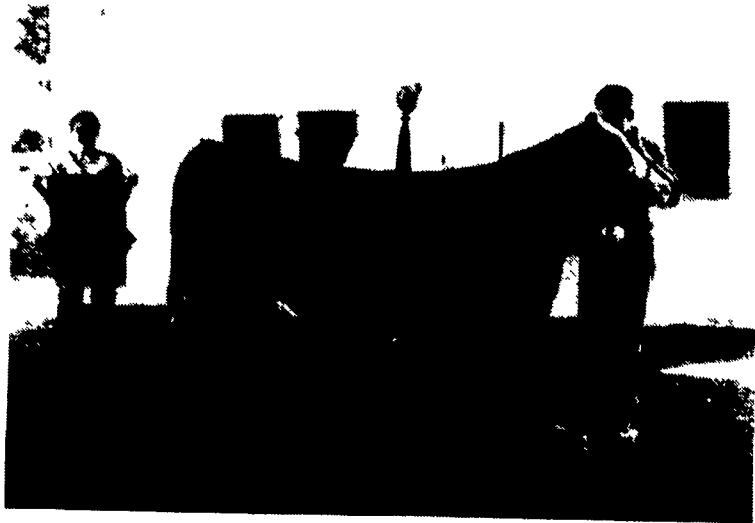
Shane Smithson's May-June heifer, Pond View Hot Tamale,

was junior champion. Tammy Nelson won reserve champion.

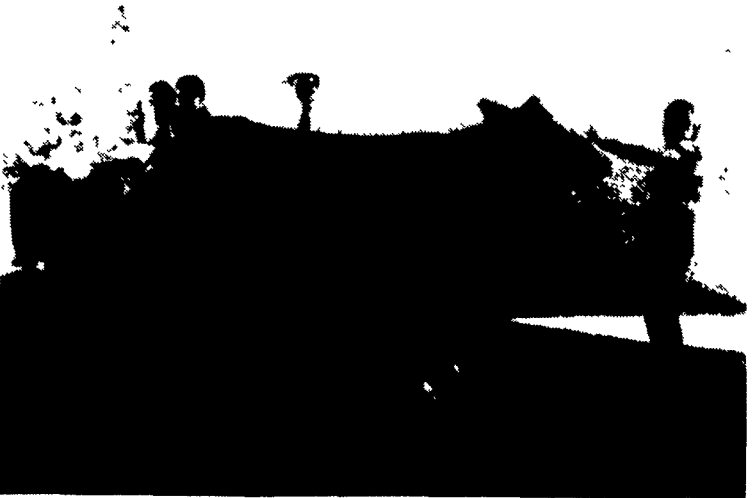
In the February 1996 class, Simme Valley Finesse, shown by Shane Smithson, led the class. Justin Harward's Pond View Tara was 1st in the January class. Raymond Stough, Spring Grove, PA., led the November-December 1995 class with Black Legacy. Melissa McNutt, Street, Md., walked to the head of the class (September-October) with Pond View E-9.

Shane Smithson had the senior champion heifer and Justin Harward, reserve champion, Judge Sayre selected Shane Smithson's junior champion for grand champion and his senior champion as reserve champion of the show.

Tammy Nelson's Wheatley Winter Red with her twin heifers



Shane Smithson exhibits the champion heifer, Pond View Hot Tamale.



Tammy Nelson shows the cow/calf champion, Wheatley Winter Red.

was an outstanding cow/calf champion. Judge Sayre selected the steer shown by Tiffany Harward, Forest Hill, Md., a medium weight steer, as champion. Justin Harward's 1,225-pound steer won reserve champion.

Scott Jenkins, Purcellville, Va.,

showed the lightweight winner.

The annual meeting followed a shrimp and ear corn meal.

The highlight of the meeting was a telephone conference with the American Simmental Association's Chief Executive Officer Jerry Lipsey.

Watersheds To Receive Funds To Clean Up Natural Resource Problems

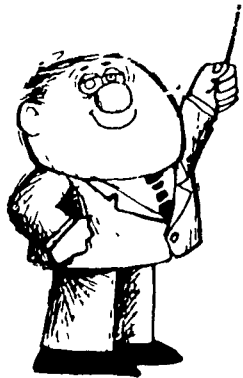
LEESPORT (Berks Co.) — Funds soon will be available for agricultural and livestock producers in all watersheds in Berks County in the Tulpehocken, Maiden creek, and Little Swatara to correct natural resource problems, said Randy McCormack, district conservationist for the Natural Resources Conservation Service (NRCS).

These watersheds in 1997 will receive the following allocation: \$141,500 for the Tulpehocken,

\$121,500 for the Maiden creek, and \$121,500 for the Little Swatara Creek Watershed through the Environmental Quality Incentives Program (EQIP).

EQIP; a voluntary program, provides financial assistance of up to 75 percent of the costs to install or apply certain conservation practices such as grassed waterways and manure storage structures. Tulpehocken, Maiden creek, and Little Swatara were among 20

(Turn to Page D5)

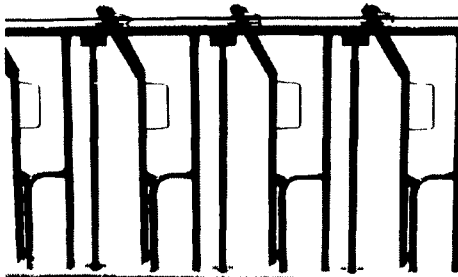


A LESSON WELL LEARNED... LANCASTER FARMING'S CLASSIFIED ADS GET RESULTS!

Paul B. Zimmerman INC.

Heavy Duty Headlocks

Finished with TGIC Polyester Powder Coating...Superior to Epoxy!



3 Sizes Available To Meet Your Cattle Handling Needs

- CA Series: 7 locks per 10'
- HE Series: 6 locks per 10'
- CO Series: 4 or 5 locks per 10'

- Extra Heavy Construction
- yokes lock on individual catches
- Yoke stabilizer on large sizes
- Designed for easy entry & exit
- Removable neck bar



Paul B. Zimmerman, Inc.

295 Woodcorner Rd. • Lititz, PA 17543 • 717/738-7365

1 mile West of Ephrata

Call or write for additional information and the name of your nearest dealer

Hours: Mon.- Fri ; 7-5 Sat.; 7-11

EXTENDED PARTS DEPT. HOURS EFFECTIVE SEPT. 2 THRU OCT. 31 To Better Serve You During The Busy Harvest Season
 MON. ★ TUES. ★ THURS. ★ FRI. 7:00 AM -8:00 PM
 WED. 7:00 AM-5:00 PM; SAT. 7:00 AM - 12 NOON

BINKLEY-HURST BROS. INC.
 FAX 717-626-0996

133 Rothsville Station Rd.
 Lititz, PA 17543
 (717) 626-4705
 1-800-414-4705



MILLER DIESEL, INC.

FUEL INJECTION & TURBO SPECIALIST

6030 JONESTOWN ROAD, HARRISBURG, PA 17112
 (717) 545-5931 • 1 (800) 296-5931

Since 1957



Specializing in:
FARMING & AGRICULTURAL
 Factory Authorized Diesel Fuel Injection
 Sales, Service & Parts

Miller Diesel, Inc. offers:

- * Diesel Fuel Injection Pumps, Injectors, Turbochargers
- * Factory Trained & Authorized for complete services on: Stanadyne (Roosa Master), Lucas CAV, Simms, Robert Bosch, Ambac (American Bosch), etc.
- * Instant Exchange or Rebuild (Fast Turn Around Time)
- * Feed Pumps (John Deere & Most All Applications)
- * Quality Workmanship, Experience, Troubleshooting.
- * Free Pick Up & Delivery (100 mile radius of Hbg.) Daily UPS Shipping

MILLER DIESEL, INC.

WE WANT TO BE YOUR FUEL INJECTION SPECIALIST