



JD 3950 Chopper, Electric Controls, Only 700 Acres Since New, 3RN Corn Head, 5 1/2' Pickup Head, Direct Cut Head, will separate. **\$10,800**



JD 3155 MFWD, 5008 hrs., solid, clean **\$23,750**



Bobcat 743B, 93 Model, Aux. Hyd., 2 To Choose From, 1500 to 1800 Hrs. **\$9,700**



JCB TLB - 2 To Choose From Starting At **\$9,750**

Backhoes

- Ford 555B 4x4 Standard Hoe, 4-in-1 Bucket, Standard Bucket Available..... **\$17,500**
- JCB 1400, 84 model, rebuilt trans..... **\$9,750**
- Case 580K 4x4 Ext-A-Hoe..... **\$25,500**
- JCB, 1400 B '86 Model..... **\$13,900**

Skid Loaders

- Mustang 940, 2500 hrs..... **\$8,900**
- Case 1840, aux, hyd., 1800 hrs, new tires..... **\$10,800**

Miscellaneous

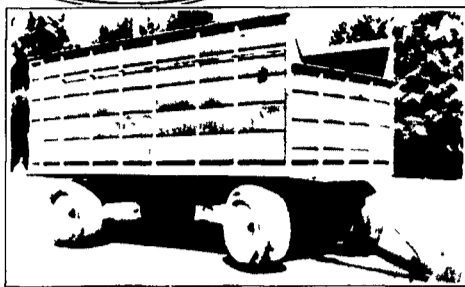
- 1989 Cat E70B Excavator, 2400 Hrs, Rubber Tracks..... **\$25,000**
- JD 455E Crawler Loader, 4-in-1 Bucket, Backhoe Attachment, Very Good Condition..... **\$25,000**
- Toyota 3FD40 Forklift, Dsl, 8000 Lb. Cap..... **\$6,500**

Jay Weaver - 717/336-7375

Financing and Lease Purchase Available No Sunday Calls

- Set 18.4x38 Snap-on Duals..... **\$800**
 - NI 802 Uni Tractor Cab and Air 4WD.... **\$12,500**
 - NI 839 Husking Bed..... **\$4,000**
 - NI 744 4RN Snapper Head..... **\$1,800**
 - IH 45 15 Ft. Field Cultivator..... **\$1,500**
 - Homemade 15 Ft. Transport Packer.... **\$1,000**
 - 4 Post ROPS For 86 Series IH Tractor..... **\$250**
 - Adapter To Put JD Heads On 839 Husker. **\$500**
- CALL 610/926-5869 FOR MORE INFO**

'BIG MUDDER' - The 14-Ton Dump Wagon



16' - \$8500 18' - \$9200
Tarp Cover available **\$525**

FEATURES:

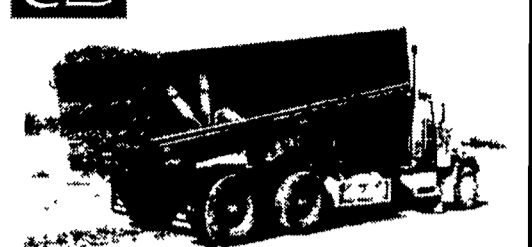
- Heavy duty construction
- 8 ft. 6 in x 16 ft. or 18 ft. box
- 650 bu. capacity (silage only)
- Automatic tailgate latch
- 8000 lb. hubs and spindles - 8 bolts
- 18 x 22.5 used truck tires included
- Tubular frame
- 6 ft. permanent racks
- Full dump tailgate - graindoor
- Scissor hoist - 2 - 5 x 26 in. double acting cylinders
- Hydraulic hoses included
- All tires on heavy duty rims

Dealers Wanted

Chassis with wheels available

Gerber Farm Repair
RD #2 Box 44
Sunbury, PA 17801
(717) 286-7851

NOW AVAILABLE in YOUR AREA



- ✓ **LIGHT** New UNIBODY Design Saves up to 1000 lbs Over Traditional Steel Body Design
- ✓ **STRONG** High Strength, High Tensile Steel, Tubular Side & Top Rails for Continuous Strength, 3/16" Floor in Smooth or Checker Plate Finish
- ✓ **DURABLE** No Sills to Catch Debris, Welded Inside Seam Provides Lifetime Waterproof Seam, Smooth, Even Bend Creates Balanced Side Panels with Corrosion Protected Tubing
- ✓ **AFFORDABLE** ONLY \$4750 for this CB Grain Body - (16' Long with 54" Sides) In Stock Now!
- ✓ **CONVENIENT** All Swing 3-section Tailgate with Camlocks & Camlock Flow Gate, Front & Rear Windows Allow Operator to View Load
- ✓ **CUSTOM BUILT** Side Heights from 48 to 72", Lengths from 16 to 24' with Widths from 8 to 8.5', plus Your Choice of over 100 Color & Decal Combinations

AG TRUCK BODIES & WORK READY UNITS IN STOCK

"Proudly supplying the Northeast's Top Farmers with our complete line of Ag Truck Bodies"

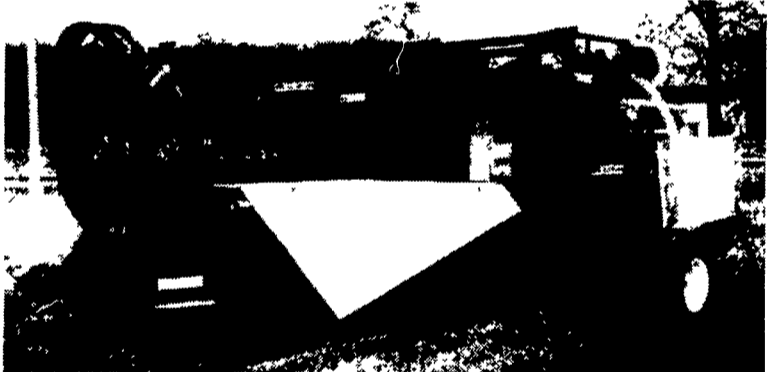
For More Information, Call Us Toll Free

1-888-278-2639

Cortland St., DeRuyter, New York



MASTER WRAP BALE WRAPPERS



- PTO Tractor Powered
- Round or Small Square Bales
- Available with Steel or Rubber Wheels
- Units Now In Stock



Self Contained with Motor or PTO Tractor Powered
• Call About Special Pricing on this Machine

WE ALSO DO CUSTOM WRAPPING

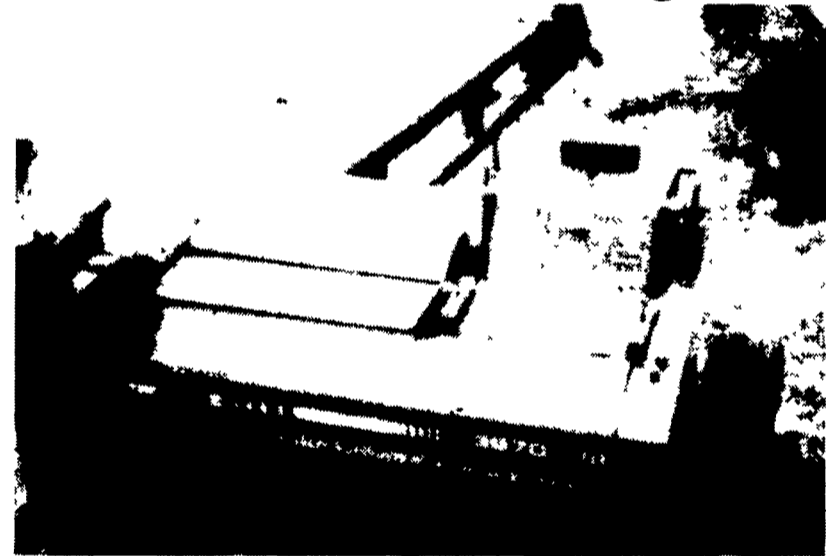
Manufactured By:

MILLERS WELDING & REPAIR

• Industrial and Farm Equip. Repair • Stainless & Aluminum Welding
• Custom Fabrication to Your Specs

54 Christiana Pike, Christiana, PA 17509 • 610-593-6112

Harvesters with Silage Roller Mill

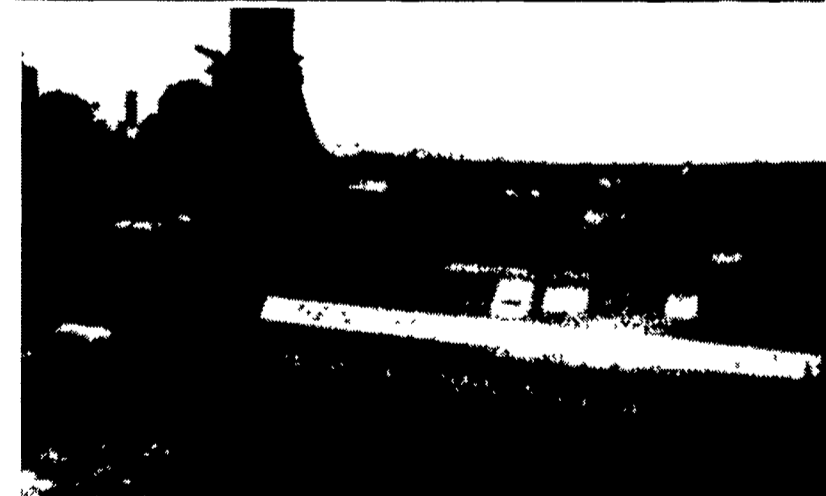


John Deere 3970

These Forage Harvesters are equipped with Kernel Processing Mills!

Start Putting the Kernels from your corn silage in the milk tank instead of in the cow gutter!

New Holland 900



- Coming In NH and JD 2 and 3 Row Heads
- JD 3970 excellent condition, original paint with silage roller mill. **\$16,500**
- JD 3970 excellent condition, original paint. **\$9,000**
- NH 892 almost new original knives **\$5,300**
- NH 892 good condition. **\$3,450**
- JD 3950 w/ iron guard (Looks like new)..... **\$10,000**
- JD 3950 harvester (very nice)..... **\$8,400**
- NH 892 harvester. **SOLD**..... **\$4,475**
- (2)NH 890 harvester. **\$3,175**
- NH 892 harvester **\$3,650**
- NH 892 harvester..... **\$4,600**
- NH 900 harvester..... **\$5,200**
- Gehl 600 harvester..... **\$1,750**
- Gehl 800 harvester..... **\$2,600**
- Gehl 800 harvester..... **\$2,550**
- IH 830 harvester. **\$1,200**

- Massey Ferguson harvester **\$2,550**
- Hesston harvester. **\$1,675**
- JD 3RN corn head field ready, Nice. **\$3,450**
- NH 880 W grass head. **\$475**
- NH 880 NZ 2R Corn head..... **\$495**
- Gehl 1R & 2R heads
- Knives Almost New
- NH 770. **\$1,000**
- Gehl 600..... **\$950**

NOTICE: We specialize in building roller mills on harvesters! Better Silage & More Milk! For More Information contact us!

Georgetown Hydraulics

343 Christiana Pike, Christiana PA., 17509
610-593-2753 Between 8:00-9:00 AM
1 Mile east of Georgetown on Christiana Pike (Closed Sunday)