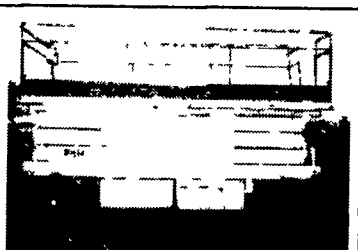
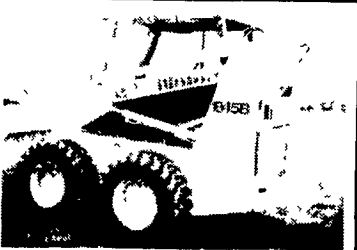


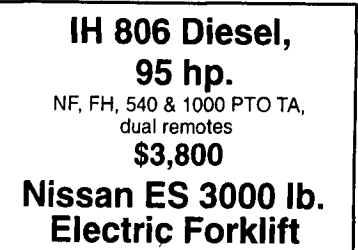
IH 806 Turbo Diesel
110 hp TA, 540 & 1,000 pto WF Dual remotes 3 point very good condition
\$5,800



Bil-Jax XLS 2560 Scissor Lift
30' working height, Bat operated 5' x 10' platform, good condition
\$2,900



Case 1845-B Diesel
Aux hyd 78 Mat bucket & 72" dirt bucket good cond
\$6,800



IH 806 Diesel, 95 hp.
NF, FH, 540 & 1000 PTO TA, dual remotes
\$3,800
Nissan ES 3000 lb. Electric Forklift
with 1 phase charger, triple mast total free lift very good condition
\$4,200

LTM Equipment Co.

Myerstown, PA

717/949-3582 • 717/949-3303 FAX

We buy, sell and repair used equipment. • Most Trades Accepted

ALKOTA • HYDRO-TEC • WAP

Pressure Washers

We Have What Your Looking For

- We build "Em" (to your specs)
- We Fix "Em" (most brands)
- We Sell "Em" (Hot and Cold)
- We Rent "Em" (Hot and Cold)

SALES - INSTALLATION - SERVICE

equipment

SPECIALIZING IN CLEANING SYSTEMS
717-354-2354

Quality Products and Service are a Tradition 252 N Shirk Road • New Holland, PA 17557

GLOWRY • MAGIDO • RGF

DELTA DJ-15
6" Precision Jointer
with any motor configuration.

- Unique Parallelogram Table Support System For Easy, Accurate Depth-of-cut Setting
- Modular, 3-knife Cutterhead Provides 15,600 Cuts Per Minute
- Extra-long, Precision-cast Infeed Table Provides A Full 30" Of Work Support
- Built-in 4"x8" rabbeting ledge supports work right at the cutterhead

37-150A
\$1,268⁰⁰

DELTA Classic Edition Unisaw®

Model 36-800
Limited Quantities Available!

\$100 REBATE!
Valid 7/1-12/31/97 See salesperson for details

\$1,699⁰⁰

THE CLASSIC EDITION UNISAW COMES COMPLETE WITH:

- 50" Biesmeyer Commercial Saw Fence System for accuracy
- Right Extension Table included as standard equipment
- Plaque inscribed with your name or company
- Classic Biesmeyer Color provides a unique look to any shop
- Steel Support Legs for heavy duty support
- Industrial Carbide-Tipped 50-Tooth ATB&R Saw Blade
- Personalized Insignia

A \$295 RETAIL VALUE-FREE!

DELTA 20" WOOD-CUTTING BAND SAW

The Saw that's Tough Enough to Cut It in Any Shop

\$2,150⁰⁰

- Heavy duty 2 HP motor • All-purpose 4750 RPM blade speed • Big 19" blade to frame capacity, 11" under guide • Extra-large 20 1/2"x26 7/8" cast-iron table with rip fence • Heavy gage steel cabinet • Fully adjustable upper and lower blade guides • Heavy blade tensioning and tracking controls • built-in blade brake • And more

28-640 ONE ONLY

DELTA Q-3 18" Variable Speed Scroll Saw

\$50 REBATE!
Valid 7/1-12/31/97 See salesperson for details

- Quickset 100 Blade Changing System
- Quality graphite composite arm
- Permanent magnet DC motor provides 300 to 2000 rpm
- Table tilts 45° right and 9° left for making bevel cuts
- Steel stand adjusts for seated or standing operation

Model 40-650
\$495⁰⁰

DELTA DJ-20
8" Precision Jointer
with any motor configuration.

\$100 REBATE
Valid 9/1-12/31/97 See salesperson for details

- Unique parallelogram table support system for easy, accurate depth-of-cut setting
- Modular, 3-knife cutterhead provides 15,600 cuts per minute
- Extra-long, precision-cast infeed table provides a full 42" of work support
- Built-in 4 x 8 rabbeting ledge supports work right at the cutterhead

Starting at **\$1,695⁰⁰**

DELTA DJ-30
12" Jointer

Model 37-360

Offers a full foot of surfacing capacity.

- Large 3-7/8" dia., 3-knife cutterhead produces 15,000 cpm
- Versatile center-mounted fence with rack and pinion movement
- Parallelogram support system for safer, more efficient cutting
- Hinged door and removable door panel for easy access to motor
- Dust hood with 5" dia. outlet accepts dust collection

\$3436⁰⁰

DELTA DELUXE EDITION 10" Contractor's Saw

Model 34-445Z

Comes complete with \$200 in free accessories!

- Heavy duty cast iron extension wing
- Versatile 30" Unifence® Saw Guide
- Large table board for solid work support
- Sturdy steel support legs
- Professional 50-tooth ATB&R carbide-tipped saw blade

Choice \$859⁰⁰

DELTA 14" Band Saw

Model 28-280Z

\$50 REBATE
Valid 7/1-12/31/97 See salesperson for details

Includes bonus band saw accessories worth \$225!

- Patented Cool Blocks™ minimize friction and heat
- 18" rip fence for resawing operations
- Mobile base adds mobility to 14" Band Saw
- Powerful 1 HP, single phase motor
- Enclosed steel stand for sturdy support

DELTA DC-380 15" Planer with FREE Deluxe Stand!

\$50 REBATE!
Valid 7/1-12/31/97 See salesperson for details

Models 22-675 (1 PH) or 22-676 (3PH) with No. 50-655 Stand

- Folding table extensions provide an additional 38" of work support
- Two cutterhead speeds 16 fpm and 30 fpm
- Cutterhead raises and lowers on four precision-ground columns
- Serrated-steel infeed roller and polyurethane outfeed roller
- Anti-kickback fingers promote operator safety
- Large cast iron table has easily adjustable bed rollers

\$1,179⁰⁰

Blue Ball Machine Co. Inc.

1116 Rte. 322 East, Blue Ball, PA 17506

Store Hours: Mon.-Fri. 7:30-5:00 Sat. 8 AM - 12 Noon

717-354-4478 1-800-860-4470