

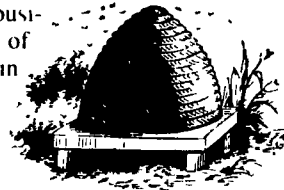


SEPTEMBER 8-14, 1997

HOLY CROSS DAY, SEPT. 14.

NATIONAL HONEY MONTH

Winnie the Pooh ate his peas with honey. Challah dipped in honey on Rosh Hashanah eve brings a new year of sweetness. Folklore lists honey under remedies for arthritis, asthma, bedwetting, constipation, coughs, sore throats, and weight control. The nutritional powers of honey are well-documented (although children under the age of one should avoid it). Dreaming about bees has been interpreted as signifying riches or success in business, probably as a result of being "as busy as a bee" in profitable undertakings. Diligence, hard work, eloquence, and wisdom are the bee's domain.



You can catch more flies with honey than with vinegar.

TIP OF THE WEEK

Two tablespoons of honey and one of apple cider vinegar in a glass of grapefruit juice may help reduce your appetite.

HONEY-GLAZED ACORN SQUASH

- 2 medium acorn squashes
- 4 tablespoons butter, melted
- 1/4 teaspoon salt
- 1/4 teaspoon ground allspice
- 1/4 teaspoon ground nutmeg
- 1/4 cup honey

baking pan with 1/4 inch of water. Mix other ingredients and brush it on the inside of the squash, reserving some for basting. Bake at 350° F for about 45 minutes, or until tender, basting at least once during cooking.

Makes 4 servings.



Wash squash, cut in half, and cut a thin slice from the bottoms, if necessary, to make a steady base. Discard seeds and stringy fibers. Place squash in a

THE OLD FARMER'S WEATHER PROVERBS



On Holyhood Day (Sept. 14), the devil goes a-nutting.

When the wind is in the north, the skillful fisher goes not forth.

If the Sun in red should set, the next day will surely be wet; if the Sun should set in grey, the next will be a rainy day.

When the corn wears a heavy coat, so must you.

Westminster Livestock Auction

Hagerstown, Md.
September 2, 1997

Report supplied by auction

SLAUGHTER COWS: 133 HEAD, STEADY TO 1.00 LOWER. UTILITY 35.00-39.75; HIGH DRESSING 40.00-41.00; HIGH DRESSING 40.00-41.00; CANNERS 30.00-35.00; SHELLY 30.00 DOWN.
BULLS: FEW YG#1 44.75-45.75; 1 HIGH DRESSING 1874 LBS. 52.50; YG#2 41.00-44.00; LOW DRESSING 35.00-40.00.

FED STEERS: FEW BEEF BREEDS OFFERED. HIGH CHOICE 1100-1300 LBS. 63.00-64.00; CHOICE HOLSTEINS 57.00-59.75; LOW CHOICE HOLSTEINS 53.00-57.00; SELECT 50.00-52.00.

FED HEIFERS: HIGH CHOICE 1000-1200 LBS. 62.00-64.50; SELECT 54.00-58.00.

VEAL CALVES: 216 HEAD. CHOICE 200-300 LBS. 65.00-72.00; CULLS 85-110 LBS. 26.00-33.00; FEW 34.00-40.00; 60-80 LBS. 18.00-26.00.

FARM CALVES: HOLSTEIN BULLS STEADY PRICES. #1 95-120 LBS. 75.00-96.00; #2 50.00-70.00; 85-95 LBS. 35.00-70.00; HOLSTEIN HEIFERS #1 95-120 LBS. FEW TO 122.00; #2 80-110 LBS. 55.00-95.00; BEEF X BULLS OVER 95 LBS. 80.00-106.00; 75-90 LBS. 40.00-70.00; BEEF X HEIFERS 80-120 LBS. 50.00-75.00.

BUTCHER HOGS: 40 HEAD, 3.00-4.00 LOWER. US#1-2 230-265 LBS. 48.00; US#1-3 45.00-46.00; 270-285 LBS. TO 43.00; #2&3 300 LBS. TO 38.00.

STOCK CATTLE: 162 HEAD. STEERS MEDIUM AND LARGE FRAME 200-400 LBS. 70.00-83.00; 400-600 LBS. 68.00-88.00; 600-800 LBS. 60.00-70.00; 800-1000 LBS. 51.00-61.00.

HEIFERS: MEDIUM AND LARGE FRAME 300-500 LBS. 63.00-75.00; 500-750 LBS. 60.00-74.00; 750-900 LBS. 55.00-60.00.

BULLS: MEDIUM AND LARGE FRAME 200-400 LBS. 61.00-76.00; 400-600 LBS. 55.00-62.00; 700-800 LBS. 49.00-55.00.

LAMBS: 55 HEAD, 3.00-5.00 HIGHER. CHOICE 100-125 LBS. 89.00-98.00; 125-140 LBS. 78.00-86.00; 80-99 LBS. 91.00-106.00; 50-80 LBS. 95.00-110.00; FEW LAMBS 155-180 LBS. 57.00-70.00.

SHEEP: 25 HEAD, ALL WEIGHTS, 38.00-53.00, FEW TO 61.00.

GOATS: 40 HEAD. LARGE 65.00-95.00; MEDIUM 40.00-65.00; SMALL 18.00-39.00.

PIGS AND SHOATS: 305 HEAD. GRADED SALE PRICES LOWER. BY THE LB. #1&2 PIGS, 16 HEAD 24 LBS. 90.00; 28 HEAD 27-39 LBS. 69.00-73.00; 138 HEAD 40-60 LBS. 65.00-71.00; 42 HEAD 61-68 LBS. 59.00-71.00; 20 HEAD 74 LBS. 59.00-64.00; 13 HEAD 97 LBS. 65.00; #2 PIGS 28 HEAD 27-37 LBS. 50.00-65.00.

SOWS: 7 HEAD, 2.00 LOWER.

400-550 LBS. 36.00-41.00.

BOARS: 400-600 LBS. TO 34.00. NEXT TUES., SEPT. 9: SPECIAL FALL FEEDER CATTLE SALE APPROX. 7:45 P.M.

Valley Stockyards

Athens, Pa.

September 1, 1997

Report Supplied By Auction
HOLSTEIN HEIFER CALVES TO 152.50.

VEAL CALVES to 68.00.
VEALER BULL CALVES TO 105.00.
SLAUGHTER CALVES 28.00 AND DOWN.

GRASSERS AND FEEDERS TO 47.50.
LAMBS TO 82.00.
SHEEP TO 47.00.

HOGS, 200-250, NONE.
SOWS TO 34.50.
BOARS TO 32.50.

PIGS 27.00-50.00.
HEIFERS, FAT TO 43.00.
STEERS 39.00-43.00, TOP 58.00.

STEERS, FEEDER, TO 65.00.
BULLS TO 42.50.

COWS, GOOD, 33.75-40.25.
COWS, MEDIUM, 28.00-32.50.
COWS, POOR OR SMALL, 27.50 AND DOWN.

HORSES TO 875.00.
DONKEY 140.00.
GOATS 22.50-122.50.

Hay And Straw Sales Will Start At 10 A.M. Every Wed.

GOOD'S AUCTION
11 North Maple Ave.
Leola, PA 17540
717-656-8911
717-656-9558

WHAT'S AHEAD FOR CORN & SOYBEAN FUTURES

- We Deal Exclusively in Commodity Futures & Options
- 25 Years of Trading & Hedging Experience
- We Handle Commercial & Personal Accounts

For Free Information or For A Personal Consultation, Please Call...

(610) 366-7979 or 800-543-8939
LEHIGH VALLEY FUTURES INC.
Commerce Plaza, Suite 249, 5000 Tilghman Street, Allentown, Pa 18104

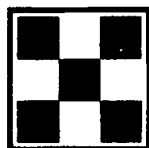
The risk of loss in trading futures and options on futures can be substantial. Futures and options trading may not be suitable for everyone. You should carefully consider the risks in light of your financial condition in deciding whether to trade.

United Feature Syndicate

(Printed in the U S A)

200 Madison Ave
N Y , NY 10016
(212-293-8500)

AVAILABLE SPRING '98

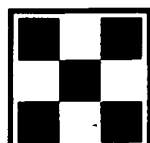


WEANER and/or FEEDER PIGS



Take Advantage of the Benefits of Single Source, Multi-site Raised Pigs

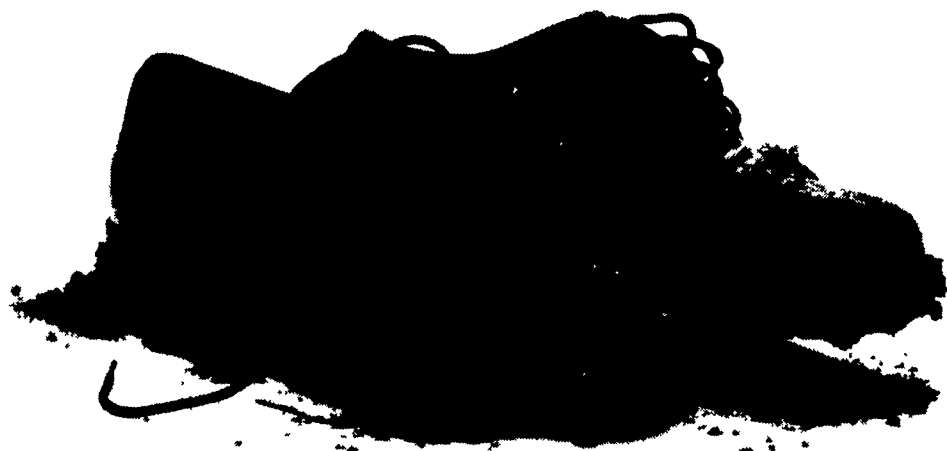
- Features:*
- 1600 pigs available/week
 - Single source supply
 - Located in Central PA
 - AI for best genetics
 - Availability sized to finisher needs
 - Financing assistance available



PURINA MILLS, Inc.
800-873-5300

Manufacturing Facilities: Lancaster, Harrisburg, Hagerstown, Wyalusing and Knoxville

Out standing in your field.



The Agri-specialists from Farmers First aren't a bunch of deskbound bankers waiting around for the phone to ring. We get involved with you. Right where you live and work. We lend the money farmers need to keep growing. And, we can help your business in a lot of other ways, too.

We talk the talk. And we walk the walk. (wherever that might lead us)



ANDY TERRELL
(717) 626-4735
EXT. 264

The Agri-specialists
FARMERS FIRST BANK
A SUSQUEHANNA BANC Member FDIC



JAY HERSHEY
(717) 768-8256