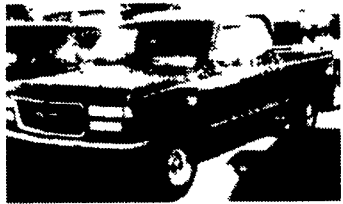
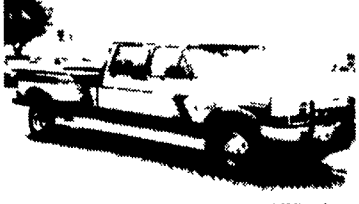


**35 TRUCKS & TRAILERS**

**USED TRUCKS**



94 GMC 2500 SLE Ext cab 4x4, 454 FI eng 5 spd AC, pwds, pdls AM/FM cass p seat 8600 GVW 49,000 miles r/raroon  
**\$17,900**



1988 Ford F 350 Crew Cab, Dual Wheel, Conversion, 7.3 Diesel, 5 Spd., AC, pdls, pwds, AM/FM cass, 4 10 rear, cruise, tilt 69,000 miles, Local Truck  
**\$11,500**

**MARTIN'S AUTO SALES**  
1025 W. Main St. New Holland, PA 17557  
(717) 656-6621



**87 Ford Cab & Chassis**  
18 1/2 ft. of Frame, GVW 33,000, 9 Eng.  
**\$11,000**

ALSO:  
**92 Ford Cab & Chassis**  
L8000, 210 Ford Diesel,  
GVW 35,000, 20 ft. Frame  
**\$19,500**

**85 Ford Cab & Chassis**  
C8000 **\$9,500**

Curry Supply Co.  
Curryville, PA  
1-800-345-2829

**SPANKEY'S**

**THE USED CAR GIANT**  
717-737-7777 or 1-888-SPANKY  
E. Main St., Mechanicsburg, PA

- 96 Chevy K-2500 X-Cab 4x4 Turbo Diesel, Auto, Silverado Pkg., Fully Loaded, Only 12,000 Miles
- 95 Chevy K-3500 4x4 w/plow Pkg 350 V8, Dual Wheels, Only 22,00 Miles, Clean!
- 95 Dodge 1500 X-Cab 4x4, 360 V8, Only 27,000 Miles, Fully Loaded, Nice Truck!!
- 96 Ford F250 4x2 Auto, V8, Air, 41,000 Miles, Super Clean, Ready For Any Job
- 95 Chevy K-2500 X-Cab 4x4, Long Bed, Auto, 350 V8, Silverado Pkg. 27K, Leather, WOW!
- 94 Chevy Suburban 1500 4x4 Auto, 350 V8, Dual Air, Only 43K, Sharp.....\$23,995
- 88 GMC K-3500 4x4 High Sierra Dually, 454 V8, What A Work Horse, Only 70,000 Miles

Many More In Stock! Just Call  
**1-888-SPANKY**

SEE US AT OUR WEB SITE <http://www.spankeys.com>

**LEFEVER BROS. CHEVROLET**  
**CHEVY TRUCKS** **Geo.**

YOUR DIRECT LINE TO GENUINE GM PARTS

**(800) 533-3837**

When you call the number listed above, you'll reach our wholesale parts specialists, who can help you keep your GM repair work moving quickly.

Ask about:

- Specializing in GM Medium Duty Trucks, Current and Obsolete.
- \$500,000 Parts Inventory.
- Parts Locator for Those Hard to Find Items.
- We Ship Anywhere, Local Delivery Available.
- Experienced, Knowledgeable Personnel.

Mon., Tues., Thurs., Fri. (717) 432-9697  
7:30 a.m.-4:30 p.m.  
Weds. 7:30 a.m.-8:30 p.m. Quality Dealer Since 1921  
Major Credit Cards Accepted 406 U.S. Rt. 15, Dillsburg, PA 17019

**GM Goodwrench Service**



**Kodiak Chevy Trucks**  
**CAT DIESEL POWER**

**USED TRUCK SALE!**



1988 Chevy, C70 23,000 GVWR 427 Gas, 5SP Trans, Hyd Brk 159,000 Miles **\$5,950**



1984 IH CO9670, XL Series, NTC 300 Cummins 9 Speed, 860,000 Miles **\$4,750**



1973 GMC, Model 9500 (1985 CAB) 750 Holmes Wrecker Body, 238 Detroit 13 SP Trans / 2 SPD Rear, In Daily Use By This Dealership! **\$17,950**



1987 Chevy, C70, 33,000 GVWR, 366 Gas, 5SP/2 SP Rear, Air Brk, Midwest Grain Body, 2 Way Hoist, 119,000 Miles **\$11,850**

GET MORE TRUCK FOR YOUR BUCK AT **BERGEY'S!**

ONLY MINUTES OFF EXIT 31 OF PA TURNPIKE... CALL FOR DIRECTIONS



**Bergey's**  
EXCELLENCE SINCE 1924



SHOWROOM HOURS:  
M-F 9A to 9P.  
Sat 9A to 4P

CLOSED SUNDAY

**TRUCK CENTER**

ROUTE 113 • FRANCONIA, PA 18924  
24 HOUR SERVICE • (215) 721-3400

24 HOUR PARTS & SERVICE  
CLOSED SUNDAY

**MOTORS**  
New & Rebuilt  
350, 366, 427, 454

6.2 Diesels Rebuilt & Used  
Will Install Roll Back Service, (at cost)  
717-762-6415

**E-TOWN DODGE**

- (10) '97 Club Cabs 2500, diesel
- 1993 Dodge Diesel Club Cab, low miles, real nice
- 1997 Dodge 3500 Cab, Chassis, Long Wheelbase, 4WD, 5-Speed, Air
- 1992 CHEVY C-20 2WD, Diesel, 54K
- (5) New Style Dodge Pickups, used

ASK FOR MILTON HESS  
Certified Truck Specialist  
717-367-6644  
717-653-6667  
Elizabethtown, PA

**EBY USED EQUIPMENT**

**BODIES**

- (3) 10' Eby Cattle Bodies
- (1) 16' Wooden Cattle Body

**GOOSENECK**

- 1995 Eby 24'x7'
- 1995 Eby 22'x8'x8 Double Deck Trailer
- 1992 Kiefer 16'x6'x7'6" 2 Horse GN
- 1991 Hillsboro 16'x7'
- 1988 Featherlite 22'x8'x6'6"
- 1987 Barrett 26'x7'x7'
- 1978 Eby 22'x8'x6'6"

**M.H. Eby, Inc.**

1194 Main Street (Route 23)  
Blue Ball PA 17506  
(717) 354-4971 (800) 292-4752  
FAX (717) 355-2114  
4435 State Route 29  
West Jefferson, OH 43162  
(614) 879-6901 (800) 752-0507  
FAX (614) 879-6904

**When agriculture is your life, the equipment choice is Eby.**

EBY is the leading manufacturer of aluminum bodies and trailers for agri-transportation. Our products are designed for superior strength, reduced weight for greater payload capacity, minimum maintenance and higher resale value. In addition to premium standard features, we offer full custom options built to your specs.

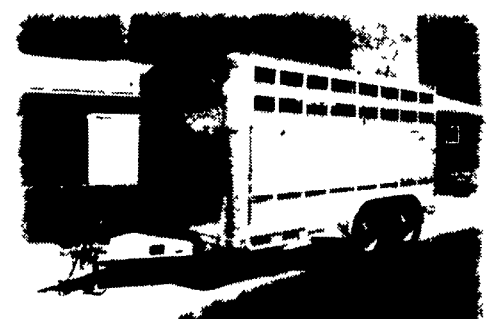
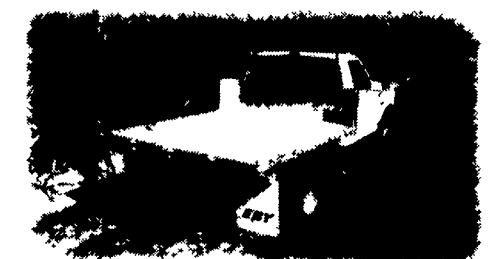
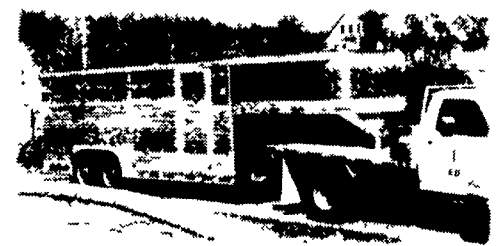
EBY's complete line includes models for every requirement:

- Gooseneck Trailers- lengths 14' - 32'; widths 7', 7'6", 8' and 8'6"
- Bumper Hitch Trailers- lengths 12' - 18'
- Grain Bodies- lengths to 24', plus landscape and general purpose dumps to 12'
- Flatbed Bodies- lengths to 32' in 5 widths
- Landscape Bodies- lengths to 12'

For quality equipment and customer service that works as hard as you do, nobody offers more than EBY.



Blue Ball, PA (800) 292-4752



Call for FREE color literature.