

**COMPLETE DISPERSION
ANNALEA FARMS**
18TH CENTURY HOME, 23 ACRES
LAND • CATTLE • EQUIPMENT
Complete inventory, including: Tractors & Skid loader,, Trucks & Trailers; Hay & Silage Equipment, Machinery, and Livestock Equipment.
ALSO SELLING Stone 18th century colonial farm house, 23 unrestricted acres with historic barn, and unattached carriage house with apartment AND complete dispersion of the Annalea Angus herd - more than 300 head
See ad in Auctions on page B26.
Sells 11 00 a m Monday, Sept 29 at the Brandywine Valley Sale facility on State Route 82, east of Doe Run, PA
For brochure (918) 250-2012, Ext 0
Williams & Williams Realtors

NEW HOLLAND
**1600
TWINE**
\$21.90
a Bale
(10 Bale min.)
Reg. \$23.45/bale
**ABC
GROFF**
110 S. Railroad Ave.
New Holland, PA
17557
(717) 355-2121



JD 3950 Harvester Iron Guard,
Hyd. Tongue **717/733-7408**

**Diesel and Electronic
Fuel Injection
Specialists**
AMBAQ BOSCH Cummins
STANADYNE C.A.V. Caterpillar
CENTRAL PENN PUMP CO.
2700 Cumberland St.
Lebanon, PA 17046
717-274-0665



Kubota

Nicarry Equipment, Inc.
RD #2 Box 2008, Reading, PA 19605
Phone (610) 926-2441
Hours: Mon. - Fri. 8 to 5, Sat. 8 - Noon, Sunday - Closed



Kubota

INVENTORY
BLOW-OUT SALE
on **LANDPRIDE, WOODS, BUSH HOG**
and **HARLEY**

- Amera Quip (Arps) 80 3 Pt. Backhoes (2 Left)..... **\$4,900**
- LANDPRIDE EQUIPMENT:**
- #2572 - 72" Rear Discharge, Rear Finish Mowers..... **\$1,400**
- RCR 72 - 6' Heavy Duty Round Back Rotary Cutters
2 Left at..... **\$1,400**
- 11' L.P. Flex Wing Mower..... **\$5,900**

- Blow Out Prices!**
- 84" Landpride Rear Landscape Rakes..... **\$600**
 - (Rear Wheel Kits for Landscape Rakes)..... **\$175**
 - 72" Landpride Rear Blades..... **\$375**

- 62" H.D. Tillers..... **\$1,695**
- Landpride Over Seeders - 48" 2 In Stock **\$3,900**

Harley: ROCK RAKES 2-6' & 1-8' In Stock..... ea. \$5,900

- BUSH HOG EQUIPMENT:**
- GT 42" w/Honda Engine
Great for Behind 4-Wheeler or Gator. My Cost AT \$1,595
 - BRUSH CUTTERS**
42"- **\$695**, 48"- **\$750**
 - WOODS BRUSH CUTTERS** 5 Footer **\$900 \$975**



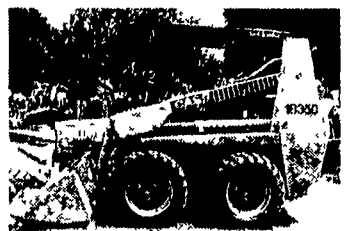
GREAT DANE SURFERS
(Commercial Mowers)
4 To Choose From
48" - **\$3,975** 52" - **\$4,595**
61" - **\$4,695**



KOYKER RAPTURE
WORK UTILITY VEHICLE
Dump Bed, Windshield, Forward & Reverse,
Electric Start, Brand New w/Warranty
Blow Out At **\$3,250** My Cost \$3,700
Now \$2,900

**BLOW-OUT SALE PRICES ON
IN-STOCK ITEMS ONLY**

MID SUMMER SALE NOW GOING ON



Case 1835C
Skid Loader



3 To Choose From
Kubota B20
Tractor-Loader-Backhoe
357 Hrs., Excellent Cond



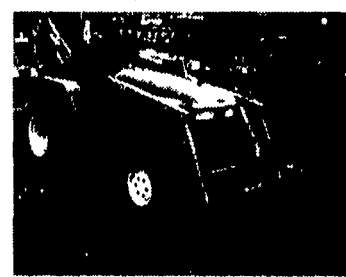
LOADER AVAIL.
Kubota L4150 4WD
Ag. Tires, 50 HP, 1600
Hrs., Excellent Condition



MF 1260 (LIKE NEW)
w/Loader & Backhoe 312 Hrs
BLOW-OUT AT \$6,900



Kubota L3600
w/Loader 3 to Choose from



John Deere 770 4WD
w/Loader, 600 Hrs, Very Nice

- USED COMPACT TRACTORS
- USED SKID LOADERS
- REAR BLADES
- BACKHOES
- LOADERS

- USED 25 HP & Up Tractors**
- (3) Kubota L35 TLB's
 - (2) Kubota L2850 4WD S.S. w/Loader, 1,500 Hrs.
 - Kubota L3450 4WD S.S, Ever Clutch w/Loader, 800 Hrs.
 - (2) Kubota L3600 4WD w/Loaders, 100 to 1000 Hrs.
 - IH 424 w/Loader - \$5,900
 - John Deere 850, 2WD w/Loader
 - John Deere 870 4WD Gear w/Loader 2,400 Hrs.
 - Massey Ferguson 150 w/Loader
 - Massey Ferguson 1260 4WD TLB, Like New Ford 8N w/Loader (2 to choose from)

- Used 15 To 24 HP Tractors**
- Kubota B2150 4WD Hydro w/Loader, 1,200 Hrs.
 - Kubota B8200 4WD Hydro w/Loader & Hoe
 - John Deere 770 4WD w/Loader, 600 Hrs.
 - Ford 1100 4WD w/Loader
 - Kubota B4200 w/44" Mower (like new)

- Used Front Mowers**
- Kubota F2100 4WD, Hydro, 60" mower, 1600 hrs
 - 3 F-Series Mowers for Parts

- Used Lawn & Garden Tractors**
- Kubota G4200 2WD Diesel, Gear, 44" Belly Mower, 500 Hrs.
 - Kubota T1600, 2WD Diesel, 44" Belly Mower, Hydro
 - Kubota T1400, 2WD, Gas, 40" Belly Mower

- Used Kubota Belly Mowers**
- RC 48" 62A for B5200, B6200 & B7200 Gear Tractors
 - RC 60" 71B for B7100 Hydro
 - RC 60" 82H for B8200 Hydro (New)
 - RC 60" 92H for B9200 Hydro
 - RC 60" 25 for L2250 & L2550
 - RC 60B for B1550 & B1750 Hydro

- USED SKID LOADERS**
- John Deere 675B
 - NH LX665 Turbo
 - Case 1840

- MISCELLANEOUS EQUIP.**
- JD #7 Backhoe
 - Goosen Raken Vac, Demo
 - 12' Used Woods Batwing Finish Mower
 - JD 4x2 Gator.....\$3,800

Work Saver Cement Mixer P.T.O., 3 pt. Hitch \$900
5 & 6 ft. King Kutter Discs, 3 pt. hitch