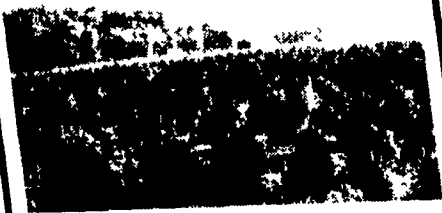


**ATTENTION: DEVELOPERS, FUTURE HOME BUILDERS, FARMERS, NURSERYMEN, LANDSCAPERS, CHRISTMAS TREE BUYERS**

# AUCTION

**LITTLE BRITAIN TWP. LANCASTER CO. PA**

**FRIDAY SEPTEMBER 5TH AT 9:00 AM**

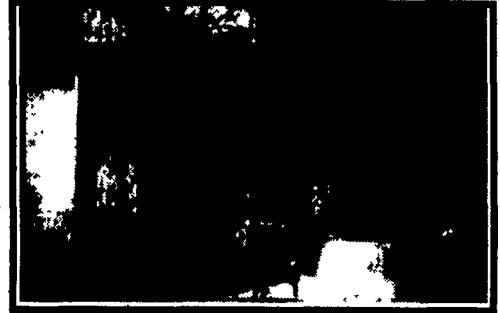


SEMS NURSERY INC.  
**SPRUCE GROVE FARMS**  
LITTLE BRITAIN TWP. LANCASTER CO. PA

**DISSOLUTION OF PARTNERSHIP**

**-49 ACRE FARM-  
-30,000 SPRUCE & FIR-  
-GOOD EQUIPMENT-**

LOCATED IN THE HEART OF PENNSYLVANIA DUTCH COUNTRY  
WITHIN EASY COMMUTE TO LANCASTER, PA, PHILADELPHIA  
AND THE NEWARK- WILMINGTON, DELAWARE AREA.  
LOCATED ON THE CHESTER-OCTORARO LAKE  
WITH FISHING AND BOATING AVAILABLE, AND CAMPSITES NEARBY.  
LOW PROPERTY AND SCHOOL TAX AS COMPARED TO CHESTER,  
DELAWARE, BUCKS, AND MONTGOMERY COUNTY  
ACCESS FROM TWO TOWNSHIP MAINTAINED ROADS:  
BLUE GILL ROAD & SCHOOL HOUSE LANE



**BEAUTIFUL LANCASTER REAL ESTATE**



**49 ACRE FARM BORDERING THE OCTORARO LAKE**

\* SPRING FED STREAM \* GOOD BUILDING SITE \* APPX. 40 ACRES TILLABLE

\* SURVEYED \* GREAT DEVELOPMENT POTENTIAL \* 30' X 45' STEEL BUILDING (4 YEARS OLD)

**REAL ESTATE TERMS:** 15% DOWN DAY OF AUCTION (PAYMENT TERMS AT BOTTOM OF PAGE). BALANCE DUE WITHIN 30 DAYS OF BID ACCEPTANCE. REAL ESTATE SOLD AS IS- WHERE IS. LIMITED POSSESSION IMMEDIATELY- UPON COOPERATION WITH PRESENT OWNER. NEW OWNER MUST COMPLY WITH REMOVAL DATES AND TERMS TILL JUNE 1ST 1998. CALL FOR MORE INFO.



**APPX. 10,000 DOUGLAS FIR  
10,000 NORWAY SPRUCE  
4,000 BLUE SPRUCE  
3,500 WHITE SPRUCE  
3,500 CANAAN FIR  
RANGING FROM 3'-6'**

THE TREES ARE OF EXCELLENT QUALITY WITH EASY  
ACCESSIBILITY AND GOOD DIGGING SOIL.  
LANDSCAPE QUALITY OR CUT OR BIG FOR  
CHRISTMAS TREES. (TILL JUNE 1ST OF 1998)  
A GREAT OPPORTUNITY IN A THRIVING AREA!



**30,000 SPRUCE & FIR  
LANDSCAPE QUALITY!! OR CHRISTMAS TREES.  
PERFECT SIZES!!  
CHESTER SILT LOAM SOIL**



**TERMS ON TREES:** IN-GROUND NURSERY STOCK DOWN PAYMENT IS THE FIRST \$1000.00 DOWN, PLUS 50% OF BALANCE. BALANCE DUE PAYMENT BEGINS UPON FIRST REMOVAL. BALANCE MUST BE PAID IN FULL BY JUNE 1ST. REMOVAL YOU HAVE TILL JUNE 1ST OF 1998 TO REMOVE THE TREES. CAN BE EITHER CUT OR DUG. CALL WITH ANY FURTHER QUESTIONS ON TERMS.



**EQUIPMENT LIST**

**TRACTOR**

**KUBOTA 4X4, #B6100 NST, 14HP DIESEL**

**MOWERS**

2 RANGER, HOOP, SELF-PROPELLED ROTARY, HP, 30", WALK BEHIND  
TROY BUIX, SELF PROPELLED SINGLE BAR, 4 HP, 30", WALK BEHIND  
JOHN DEER, SELF PROPELLED ROTARY, 11 HP, MODEL BX-60, 30", RIDER  
HONDA, SELF PROPELLED ROTARY, HP, MODEL # 107L, 30", RIDER  
SQUEALER, 42" 3 PNT INTCH, ROTARY  
JOHN DEER, SELF-PROPELLED ROTARY, 11 HP, BX-60, 30", RIDER (NOT RUNNING)  
JOHN DEER, SELF PROPELLED, 30" SINGLE BAR, 6 HP, #220, W/ SEPARATE 23" ROTARY MOWER (NOT RUNNING)

**SPRAYERS**

60 GALLON, BACK PACK MIST BLOWER  
60 GALLON, CENTRAL TRACTOR, 3 POINT MOUNT WITH HOSE, WITH PTO PUMP  
20 GALLON TRACTOR SUPPLY CO., FULL DRUM, WITH PTO PUMP  
50 GALLON, BACK PACK SPRAYERS WAGON

**WAGON**

PEQUA 670R 10', 12" TUBULAR METAL, 6000L, TRACTOR WOOD FLOOR (LIME NEW)

**TREE BALERS**

3 HONEY 12" WITH ADJUSTABLE GROUND  
3 YEAR WARRANTY VEHICL  
20" X 30" HOOP SETUP  
40 60" BARK SHIPS  
THE EQUIPMENT BEHIND TRANSLATOR, 3 POINT MOUNT, SINGLE ROW W/ TRANSLANT 80K  
STYL 920 STUMP CUTTER  
STYL 920, 921, 910 DRUMS SAME  
CAL, 1000, DRUMS TOOLS

ALSO: TALL TREE CRANES & HOES, POSTHOLE (200LBS) AND AUGERED HANDS.

**TERMS ON EQUIPMENT: CASH & CARRY DAY OF AUCTION**

**PAYMENT: BY CASH, TRAVELERS CHECK, CERTIFIED CHECK OR COMPANY CHECK WITH PROPER ID. UPON REGISTRATION YOU MUST LEAVE A SIGNED CHECK OR CASH DEPOSIT. IF YOU ARE TAX EXEMPT MAKE SURE YOU BRING YOUR CERTIFICATE WITH YOU.**

**DIRECTIONS FROM POINTS EAST, WEST, AND NORTH: FOLLOW THE PA TURNPIKE TO THE RTE. 10 SOUTH- INTERCHANGE WITH I-76. FOLLOW RTE. 10 SOUTH TO THE US. ROUTE. 1 BYPASS, FOLLOW THE US ROUTE 1 BYPASS SOUTH 2.5 MILES TO THE RTE. 472 INTERCHANGE. TURN RIGHT ONTO RTE. 472 AND PROCEED NORTH 4 MILES ACROSS THE OCTORARO LAKE TO SPRUCE GROVE ROAD. PROCEED 2.4 MILES TO ASHVILLE ROAD, THEN TURN RIGHT ONTO ASHVILLE ROAD. PROCEED 0.5 MILES TO BLUE GILL ROAD. TURN RIGHT ONTO BLUE GILL ROAD. FOLLOW AUCTION ARROWS.**

**DIRECTIONS FROM POINTS SOUTH: FOLLOW I-95 TO THE RTE. 272 INTERCHANGE. PROCEED NORTH ON RTE. 272 TO OXFORD PENNSYLVANIA. FROM OXFORD, PROCEED NORTH ON RTE. 472 AS DESCRIBED ABOVE.**



**REIMOLD HORTICULTURAL AUCTION & MARKETING SERVICE**

**"THE NURSERY & REAL ESTATE AUCTION SPECIALISTS"**

**TRANSFER, PA & DAYTONA BEACH, FL.**

**BOB REIMOLD AUCTIONEER AU-000753-L**

**VINCE CIANGI AUCTIONEER AU-002989-L**



**PHONE: 412-646-1771**

**WE ARE NOW ON THE INTERNET!**

CHECK OUT OUR HOME PAGE AT [www.infonline.net/~auction](http://www.infonline.net/~auction)  
E-MAIL ADDRESS IS: [reimold@infonline.net](mailto:reimold@infonline.net) or [auction@infonline.net](mailto:auction@infonline.net)