

ROPE IN SOME EXTRA CASH!

Advertise With A Lancaster Farming CLASSIFIED AD...

Phone: 717-394-3047 or 717-626-1164



Power King 1614 Jim Dandy, 3pt hitch, 48" mower, snowplow, chains, just gone over and painted \$2500. York Co. 717-225-6061.

Reg Belgian stallion 11 sorrel worked on Amish farm sure breeder, blood typed \$1200 OBO. Steve. Juniata Co. 717-463-2036.

Chevy Caprice sw, 1992 94k dark red/silver 3rd seat, GC \$6900. Dixon 2tr 311 GC \$875. New Castle Co. 302-834-0918.

Antique stroke sander, 10" belt table 32wx77". Arthur Litton, Clear Spring. Wash. Co. 301-842-2078.

Farmall Super C tractor w/2 row cultivator and corn planter \$2400. Lanc. Co. 717-367-6978.

28 good used cow mats, Jonas Lapp, 894 Georgetown Rd, Paradise PA 17562.

Farmall M tractor, runs good, needs paint, tires, brakes, \$1000 OBO by Sept 15. Baltimore Co. 410-771-4706.

One tobacco wagon, 22", good cond \$220. Lanc. Co. 717-626-7665.

630 NH round baler, good cond, also 5 4x8 pcs of tender foot for piggies, 4 10 hole piggy feeder. Lanc. Co. 717-656-8531.

Used rubber stall mats, good for horse stalls, pressure washed \$15 ea. John Gluck, 161 Buck Heights Rd, Quarryville PA 17566.

John Deere 655 compact dsl tractor, 4 wheel drive, hyd, PS, mid mower, quick tatch loader, 3pt and PTO, 287 hrs, retirement forces sale. Delco. 610-358-5839.

955 Cat tractor loader, very good cond \$8500. HG Cietrac, wide track \$2600. Lehigh Co. 610-262-5709.

Woodstove, Jotul lumberjack no 380 heating capacity 2500-5000 sq ft \$250. Frederick Co 301-662-1902

John Deere H manure spreader for parts or repair, handycap stair lift, like new Paul Sauder. Berks Co. 610-682-4699.

JD 950 tractor loader, backhoe, 4wd, 1988 \$10800 Pure raw honey fresh from my own hives \$18 gal Chester Co. 610-495-5715

NH 358 grinder mixer, hammers never turned, long extension auger, hyd drive, scales selling because of drought \$5500 OBO. Washington Co. 301-733-9214.

1982 Ford F150 4x4 302 V8, 4 spd, w/cap and racks, needs work \$1500. 1985 Chevy Monte SS rear assembly \$100. Chester Co. 717-442-8995.

New Idea 311 2 row wide row 8 roll husking bed, field ready, 140,000 BTU, Keystate hot water furnace w/circulator and controls BO. Lycoming Co. 717-584-3230.

Deivo test, to test for antibiotic in milk \$100. Berks Co. 610-775-3979.

Schnitzelback, shaving horse, ideal for crafts persons, \$25. Hood and front bumper from 1990 Dodge Dakota \$25 ea. Berks Co 610-286-9682.

Caterpillar tracks for models 20 and D4, exc cond, BO. D2 dozer \$5500. Mahlon Bender, 1198 Springs Rd, Springs PA 15562. Somerset Co.

352 New Holland grinder mixer, hammers never turned, very good cond \$2700. Lehigh Co. 610-298-2187.

Two barns to be torn down, hand hewn beams, built 1800s, BO. NJ and PA line along river. Warren Co. 908-859-2348.

Paint breeding stock eligible 6 mo filly \$400. Harmony guitar \$100. 86 Ford 11 passenger van \$1750 OBO. Schuylkill Co. 717-682-3488.

1994 JD side hill combine, exc cond, 650 hrs, reason for selling due to ill health, 2 yr factory warranty left. Northd. Co. 717-538-5574.

New Dayco hyd hose, 3/8" ID, 100 RI AT 143' roll \$125. Lebanon Co 717-866-4203.

2hp Baldor buffer on pedestal, 1 1/4" shafts, \$365 Lathe chucks to 10" dia Aloris tool post. Lebanon Co. 717-273-3982.

6yr old sorrel saddlebred, sound, safe, anybody can drive Joseph Blank, 158 Blank Rd, Narvon PA 17555. Lanc. Co.

John Deere wrap around weights for models 50, 60 and 70, two complete dumping stations w/elec controls Snyder Co. 717-837-5170.

Holstein breeding age bulls, pressure treated fence posts, 5"x8" \$5, 3"x7" \$2.50 Franklin Co. 717-597-4494.

2 reg charolais bulls, halter broke, 2 yr old sire of excellent calves, 6 mo bull, very quiet. Susq. Co 717-465-3428.

JD 336 baler w/kicker \$3500. 36"x6" transport auger \$400. Transport disk and transport harrow, \$500 ea. Massey cutdioner w/cyl ex knives \$500. Sch. Co. 717-345-3822.

Clayton coal or wood burner, 150,000 BTU, add on gas or oil hot air domestic hot water coil. Sch. Co. 717-345-4389.

1970 Dodge Challenger, 383 auto rally wheels, \$1800. 1962 Dodge power wagon W300 dually utility box and snow plow \$1600. Northd. Co. 717-339-5777.

1973 Ford F100 pickup, 390cc, auto, runs, high mileage, body bad, 1984 Honda Accord, auto, AC, motor bad. Chester Co. 610-593-6668.

Rye seed, clean and 76 IH combine. Union Co. 717-966-0278.

Ear corn, hay. Steel wheeled IH hay rake, very good cond. Westmoreland Co. 412-834-7197.

Pair 16.x2h black, 6 yr, lead horses, hooked all farm machinery, used on road, Rufus Martin, 1105 Kramer Mill Rd, Denver PA 17517. Lanc. Co.

1953 Chevy pickup truck, 5000 gross wt \$3000 as is where is. Sch. Co. 717-345-8367.

Ford 901 power master row crop equipped w/all options, cond exc \$3495. Eves. Wash Co 412-945-5289

Horse shocking stocks \$400. Work horses, belgian and percheron, 6-7 to choose from. Clinton Co. 717-726-3156.

Small grain rye seed, 1/2 bushel baskets. No Sunday calls Lanc Co. 717-354-5974.

Hydraulic unit w/7.5hp Kawasaki engine, exc cond \$700 Lanc. Co. 717-627-5378.

IH 110 forage wagon, 3 btr, field ready, \$850 OBO. MF 22 bale thrower Lanc. Co. 717-626-4398.

284 horse AC engine, 100 gal hi pressure orchard sprayer, w/Briggs engine and 10 gal per minute pump 424A Peters Rd, Gordonville PA 17529 Lanc Co

JD 300 garden tractor, 16hp 48" mower, new rear tires, hyd drive, dual hyd. York Co 717-229-2333.

Douglas fir 5-8ft sheared, you cut, etc, must sell for Xmas 3-4k perfect shape, std whsle OBO. Centre Co. 814-355-3678.

Barn boards, wide, chestnut 14"x12" 14"x15", about 500' bass wood planks 2 1/2x22 by 8", call after 5 p.m. Lebanon Co. 717-865-7390.

53 Jeep 4 cyl three spd, ideal off roader, new paint, plum purple, \$1200 OBO. Must sell. Eves. Lanc. Co. 717-656-3322.

Ram potential, purebred dorset, horned lamb, ready to breed, handsome outward curved horns, a great bargain at \$200. Berks Co. 610-777-1653.

Pullets, ready to lay, 18wk old, red sex links, or golden red vaccinated. Zimmermans. Lanc. Co. 717-445-6976.

Office partitions, two w/sound absorbing panels, new cond, grey, ea 6' high, 4' wide \$75. Monmouth Co. 609-259-1102.

20 tons ear corn, good quality, wood crib. Centre Co. 814-237-7523.

JD 450C crawler loader, factory cab, exc cond. Northampton Co. 610-261-1015.

JD 7700 4x4 combine \$7500. JD 215 flex \$2000. JD 643 \$5000. JD 4020 \$7000. 500 bushel grain dryer \$1500. Bucks Co. 215-536-5182.

Antique arbor press, cheap \$40 and fiberglass v bottom boat, 10' lg. Chester Co. 610-326-4640.

Goliath silo unloader for harvester, new delivery chain and sprockets \$3500. Chester Co. 610-593-6026.

2 16.9x30 tires 50% tread Col Co. 717-784-6799.

Llamas, 3 males, 2 brown black, one mostly white, approx 800 ea, 700 ea, if buyer takes all. Fulton Co. 717-485-4917.

Farmall M tractor, steel wheels and pulley, good cond \$1000. Chester Co. 610-933-3630.

Two samoyed dogs, one male, one female, both have papers. Kennel and doghouse \$600 for all. Chester Co 610-273-3603.

4 plus acre wooded building lots, perked and probed approx 475+ road frontage, zoned conservation, Dover Twp \$50,000. York Co 717-292-2614.

Veterinarian pediatric cabinet scale cap 130lb \$495. 1989 Eagle Premier, maroon, 6 cyl \$1495. Alum wheel conveyors, 10ft \$55 Northumberland Co. 717-339-2252.

Cattle shade frame 25x38' includes Donovan shade material all pipe, dipped in paint, on skids, \$575. Can deliver. Lebanon Co. 717-865-3976.

Double glass door display, reach in freezer adj shelves, Vulcan propane gas oven, 3 deck. Lanc. Co. 717-892-2099.

Old barn w/slate roof, you tear down. Northern Harford Co. York Co. 717-456-7375.

Golden Eagle bow, new 9 arrows, quiver sights, optional carry case, release broad heads. Lanc. Co. 717-768-0241.

D28 Stihl chain saw for parts, w/good back handle, NH 251 grinder mixer for parts, 1180 Woodlyn Dr, Denver PA 17517. Lanc. Co.

Miniature donkey jack 3 yr old, real nice. Lanc. Co. 717-445-6947.

Guernsey cow, reg, born 1991, fresh 4-6 wks \$600. Lanc. Co. 717-445-6026.

Kitchen range in good cond, used 10 yrs, Melvin Fisher, 25 Quarry Rd, Paradise PA 17562. Lanc. Co.

1978 Int truck, 17 1/2' grain dump, grain auger, 57"x8" PTO, 20 8x38 bolt on duals. Lanc. Co. 717-361-8747.

1984 Chevy, dual wheels, Morrison body, one ton 350 automatic \$2850 OBO Lebanon Co. 717-865-3869.

Myers snow plow, 8' power angle, new plow, lights, Ford set up. Chester Co. 610-268-3740.

JD 720 WFE and 3pt nicely redone, JD 440 crawler loader, gas engine very good cond. Dauphin Co. 717-657-3056.

Snow plow blade, 6' loader, mount like new \$200. Singer sewing industrial new table clutch motor \$500. Bucks Co. 215-862-9472.

Scat trak 1650 skid steer 1700 lb lift, \$7500. Exc cond. Mich 55A loader 4x4 forks \$8000. Wyo. Co. 717-945-7759.

Ford 8N tractor, two new front tires, snow plow, lifting boom, and draw bar, needs tuning up \$2500 OBO. Salem Co. 609-691-0464.

Woods 15' Batwing mower, less than 100 hrs use, \$5500. 10' disk \$750. 2 row corn planter \$200. Lambertville NJ. 609-466-0627.

Hough H65C art loader, runs ex \$11,500 Rosco asphalt patch machine, RA200 Cummins very low hrs \$12,750. Hunterdon Co. 908-782-6873.

1986 S10 Chevrolet truck, extended cab, 4x4 auto cap, cassette, radio \$3000 OBO. Cumberland Co. 717-243-3265.

Cummins big cam 3 350 \$1500. 3406 A head w/Jake \$800. Mack 6 spd trans \$500. 70' Dodge powerwagon 4x4 Berks Co 610-385-6841.

Golf cart, Harley Davidson, gas motor, 3 wheeler, \$425. Lanc. Co 717-626-4266.

Douglas fir evergreens cut for Christmas trees or B&B for landscape use, beautiful quality Huntingdon Co 814-667-3666.

Automatic 1200 rollermill, blower and husk shredder, good cond. 8-8:30 a.m Dauphin Co 717-362-9407.

Registered polled hereford bulls, nice gentle, easy keeping records, ready for herd sire duty. Cumberland Co 717-532-4423

JD 4020 tractor, 1300 hrs, rebuilt motor, power shift, good cond \$10,000 Post hole digger separate \$500. Dauphin Co 717-362-8074.

5' heavy duty 3pt hookup mower, \$525. Massey 72 self propelled combine \$1200. MM ground drive manure spreader \$725 Mont. Co 215-679-7762

6wk old shepherd lab puppies, very cute, \$25. Amos Beller, 170 Loop Rd, Quarryville PA 17566. Lanc. Co.

Hay crimper, 6' \$250. Finish mower, 4' 3pt \$350: Salem Co. 609-769-9772.

Barsoy barlay for seeding cleaned, treated, last year certified, taking orders for Sept delivery, \$4.25 bu, no Sundays. Lanc. Co. 717-336-6280.

1978 Chev 3/4 ton pickup, auto, PS, \$600 OBO. Lanc. Co. 717-354-0175.

W9 tractor \$18000 OBO. Windows doors and air conditioner for 966 IH tractor BO. Makita drill BO. 2 ceiling fans \$110 ea. Wanted-hired help 1st 2 wk in Sept. 8:30 p.m. Lanc Co. 717-548-3354.

Cripper grain cleaner \$2200. 4x16 Int SAR plow, \$1500. Oliver 3x18 SAR plow \$1200. Int chisel 9T \$1200. Lanc. Co. 717-426-1742.

Champion coal stove, mft by DS Machine, used 6 yrs, very good cond. Lanc. Co. 717-768-8609.

Goats milkers, yearlings, kids, 1-5 p.m. or leave message. Wind Gap PA. 610-863-4840.

Cutter knives for Gehl C40, dirt scoop, Christ Stoltzfus, 4775 Homeville Rd, Cochranville PA 19330. Chester Co.

Garage doors, 2 7x8' \$50. Patio door, 6' w/storm door \$60 Leaf plower, hand held \$20 York Co 717-246-1337.

JAY ZEIGLER Standing Seam Metal Contractor

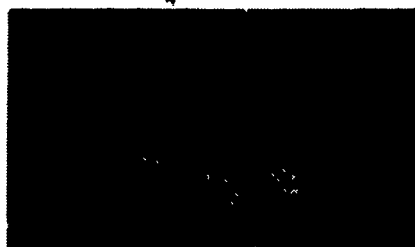
Since 1963 "Simply The Very Best Roof Available"

FREE Estimates

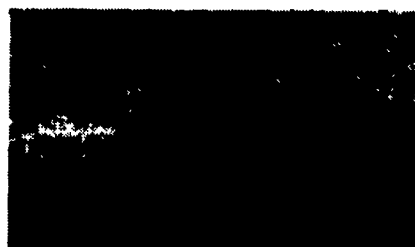
Call For Information



Use on Barns Or Garages



Light Commercial.



Reroof w/Metal

ADVANTAGES:

- Roof can last for 100 years - cost efficient
- Can be installed over existing roof (Asphalt, roll roofing, wood shingles)
- Is environmentally safe
- Beauty - colorful (galvanized, 40 lb. terne, terne-coated stainless, and painted steel in over 20 different colors.)
- Can be installed on flat roof with as little as 1/2" pitch per foot.
- Good for homes, farm buildings, garages, commercial buildings.
- Sheet in continuous length installed with concealed fasteners with double lock seam for water tight application.

PO Box 231 Rehrersburg, PA 19550

(717) 933-4666 (717) 933-5305 FAX/PHONE

New Construction

