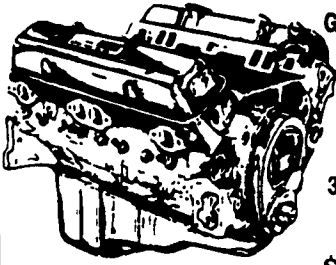


# JONES

Goodwrench ENGINE

## HEADQUARTERS



GM GOODWRENCH  
350 V8 1973-85  
Part Number  
10067353  
New Engine - Not  
Rebuilt  
36 Month or 50,000  
Mile  
Warranty  
**\$1199<sup>00</sup>**

New Engine - No Core Fee

WE'LL  
MATCH ANY  
COMPETITOR'S  
PRICE!

6.5L  
GOODWRENCH  
DIESELS  
From  
**\$3,175**

Call 394-0711 for prices on other New or  
Remanufactured  
Goodwrench Engines. 2.5 Liter thru  
454 cid. Gas and Diesel

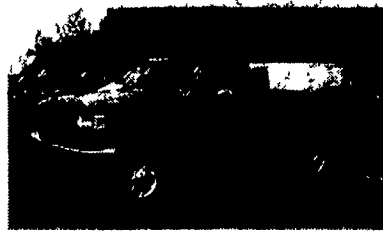
Chevrolet - Pontiac - Olds - Buick - Cadillac - GMC

### JONES GM PARTS CENTER

1335 Manheim Pike, Lancaster, PA 17604  
Easily Located on Rt. 72 Just off of Rts. 283 & 30  
Hours: Mon-Fri 7:30 a.m. - 9 p.m. Sat 7:30-3  
(717) 394-0711



**1996 FORD F350  
CREW CAB**  
351 V8, AT, 24,000 Miles, Black,  
Great for construction crew  
Was \$24,999 **NOW \$22,999**



**1995 FORD F350  
4 x 4**  
XLT, Power Stroke Diesel,  
Loaded  
Was \$27,999 **NOW \$24,999**

Unless the Chapman Emblem is on Your Car or Truck - You Probably Didn't Test Mine

**LEBANON**  
20th & CUMBERLAND STS - RT 422 WEST  
A DIVISION OF THE CHAPMAN AUTO GROUP

## McNAMARA SUBARU Limerick, PA 1 (800) 753-3123 USED TRUCKS & CARS

- 1997 Dodge 3500 \$33,500
- 1996 Ford F250, \$25,900
- 1996 Ford F350, \$25,900
- 1995 Ford F250, \$23,900
- 1995 GMC Sonoma, \$14,900
- 1994 Dodge 2500, \$21,900
- 1991 Ford F150, \$8,995

**REWARD: Cash paid for any diesel 4x4**  
Before you trade, call me about your truck.  
Ask For Dennis McNamara, 1 (800) 753-3123

**Trailers Unlimited**  
Utility Trailers From 4x6-6' x 14'  
Trailers for the homeowner or  
landscaper  
Quality Built and ready to use  
Prices starting at \$575.00  
Need a special trailer - get a trailer built  
the way you want it  
We build our trailers  
**Trailers Unlimited**  
1641 Highland Ave. Rd.  
Gettysburg, PA 17325  
Phone 717/338-0541  
Fax 717/338-9104

**FOUR WAY  
AUTO SALES**  
New Holland, Pa.  
717-354-3199

(1) 1994 (1) 1995 (1) 1996 Ford  
E350 XLT 15 Pass. 351 Auto O/D, dual  
A/C & heat, privacy glass, PW, PDL, tilt,  
cruise, cassette.  
(3) 1993 (2) 1994 (1) 1995 (1) 1996  
Ford E150 XLT 8-pass, dual A/C & heat,  
privacy glass, PW, PDL, tilt, cruise, cas-  
sette, low miles.  
(2) 1996 Ford E250 XLT 12-pass,  
351, Auto O/D, dual A/C & heat, privacy  
glass, tilt, cruise, PW, PDL, cassette.  
(1) 1995 (1) 1992 Chev. G20  
8-pass., 350 V-8, Auto O/D, loaded.  
(1) 1994 Chev. G30 12-pass, 350  
V-8, Auto O/D, dual A/C & heat, privacy  
glass, cassette, only 25,000 miles.  
(1) 1996 Dodge B3500 SLT  
15-pass., 360 V-8, Auto O/D, dual A/C &  
heat, privacy glass.

Largest Stocking  
& Selling  
Extended Cab  
GMC Dealer in 7  
States

# JONES

PONTIAC • HONDA  
GMC TRUCK  
1335 Manheim Pike, Lancaster  
Prices based on straight sale, Tax & Tags extra.  
Trades accepted at actual cash value.  
Must present this ad at time of purchase for  
sale price.

# 717-394-0711

## JONES BEST BUY 4X4'S TRUCKS

 <b>'95 CHEV G20 CARGO VAN</b> AT, AC, V8, 35,000 Mi. #7494 Was \$17,400 <b>SALE \$15,400</b>	 <b>'93 CHEV K15 4X4 SPORTSIDE</b> V8, AT, AC, Silverado #7481 Was \$18,800 <b>SALE \$15,700</b>	 <b>'91 F150 XCAB 4X4</b> AT, V8, AC, XLT #7446 Was \$14,900 <b>SALE \$12,832</b>	 <b>'92 GMC SAFARI</b> AT, AC, V6, SLE, Rear Air #7430 Was \$10,900 <b>SALE \$9,000</b>	 <b>'95 GMC SUBURBAN 4X4</b> AT, AC, 6.5 Turbo, SLE #7519 Was \$34,100 <b>SALE \$30,700</b>
 <b>'93 GMC SUBURBAN</b> AT, AC, V8, SLE, 8 Pass, #7426 Was \$19,700 <b>SALE \$17,800</b>	 <b>'90 GMC V JIMMY 4x4</b> AT, AC, 350, SLE, 59,000 mi. #7477 Was \$12,700 <b>SALE \$10,930</b>	 <b>'95 CHEV S10 4X4</b> LS, 5 Spd., V6, AC #7445 Was \$16,800 <b>SALE \$14,730</b>	 <b>'96 GMC SONOMA XCAB</b> 5 Spd, Air, 4 Cyl., SLS #7466 Was \$12,900 <b>SALE \$11,200</b>	 <b>'94 CHEV K35 4X4</b> 6.5 Turbo, 10,000 GVW, AT, AC, Silverado #7509 Was \$21,800 <b>SALE \$20,200</b>
 <b>NEW '97 GMC K30 CREW CAB</b> 4x4 AT, 454, AC SLE, Loaded #18431 Was \$33,538 <b>SALE \$30,893</b>	 <b>'95 CHEVY SUBURBAN 4X4</b> AT, AC, 350 Silverado #7476 Was \$25,380 <b>SALE \$23,100</b>	 <b>'95 GMC YUKON 4X4</b> 4 Dr, AT, AC, V8, SLE, #7433 Was \$27,200 <b>SALE \$24,500</b>	 <b>'93 JEEP CHEROKEE 4X4</b> 4 Dr, AT, V6, AC #7501 Was \$14,700 <b>SALE \$12,480</b>	 <b>'94 CHEV K35 XCAB 4X4</b> 6.5 Turbo, AT, AC, 10,000 GVW, Silverado, #7508 Was \$22,350 <b>SALE \$20,825</b>
 <b>'92 GMC SUBURBAN 4X4</b> AT, AC, SLE, 350, 8 Pass #7512 Was \$16,800 <b>SALE \$13,930</b>	 <b>'94 FORD RANGER XCAB 4X4</b> AT, AC, V6, XLT #7495 Was \$14,800 <b>SALE \$13,550</b>	 <b>'95 CHEV K25 4X4</b> 8600 GVW, 350, AC, 5 Spd., 14,000 Miles #7490 Was \$21,800 <b>SALE \$20,391</b>	 <b>'95 FORD AEROSTAR</b> 8 Pass, XLT, AC, AT, V6 #7463 Was \$12,900 <b>SALE \$10,800</b>	 <b>'88 CHEV S10 BLAZER 4x4</b> AT, AC, V6, Tahoe, Clean #7451 Was \$8,995 <b>SALE \$7,000</b>

Prices based on straight sales, Tax & Tags extra, Trades accepted at actual cash value. Must present this ad at time of purchase for sale price.