

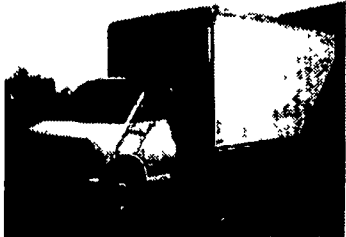
LEFEVER BROS. CHEVROLET CHEVY TRUCKS GEO.

406 U.S. Route 15 North, Dillsburg PA

Quality Dealer Since 1921 717-432-9611

1997 CHEVY C SERIES

33,000 GVW Dump Chassis,
230 Hp CAT, 5 speed, 2 speed

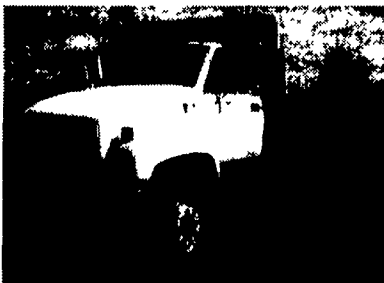


97 CHEVY C-60

Low Pro 10' Gallion Dump
25,950 GVW, 366 Gas

97 CHEVY 14' CUBE VAN

Auto, 350 V-8 11,000 GVW



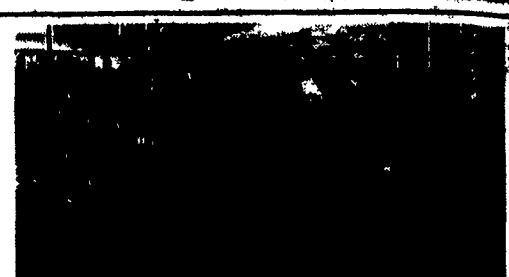
Stainless Steel Spreader Truck

1979 White Expediter
w/Jake, Heavy Specs, With Agitator,
Ready for Work

\$23,900
717/684-6680



'77 International Dump 238 Detroit,
10 speed, nice clean truck, 20' body,
barn gate, ready to work.
610-944-9871 evenings 6 to 9



1997 Chevy 3500 Cheyenne 4x4
8' Cry Steel Dump, Snow Plow Prep
Pkg., 12,000 GVW, Votec 570 V-8, 5
Speed Trans w/Granny, AM-FM
Cassette, 456 Rear Axle Ratio



1996 Chevy 1500 4x4
Western Power Angle Plow
4-3 V-6, Auto, AC, Cassette, 5700 Miles
\$23,900

KEN HESS CHEVROLET, INC.
360 East Main Street, Middletown, PA 17057
(717) 944-1344 1-800-245-HESS



1996 FORD F250 XL PU TK,
7.3L Power Stroke Diesel, AT/OD, AC, PS, PB,
Delay Wipers, Dual Fuel Tanks, AM-FM, Bed
Liner, Aqua Green, 20,000 Miles **17,900**



1993 JEEP GRAND CHEROKEE
Limited, V8, AT/OD, AC, Leather, PW, PDL, Tilt,
Cruise, p seat, Keyless Entry, Airbag, ABS, AM-
FM, Cass W/CD Changer, Alloy Wheels, White
w/gold Trm, 61,000 Miles **\$18,900**



1991 CHEVROLET S10 SPORT,
2 DR, 4x4, 4.3L V6, AT/OD, AC, PW, PDL,
Tilt, Cruise, Alloy Wheels, AM/FM Cass,
Charcoal Gray, 97,000 Miles **\$9,800**



1990 JEEP CHEROKEE, 2 Dr, 4x4,
2.5L FI, 4 Cyl., AT, AC, PS, PB, Rubber Floor Mat,
Vinyl Seats, Lt. Blue, 126,000 Miles **\$4,800**



1988 CHEVROLET C30 BOX TK,
12 Ft. Box w/ Liftgate, 5.7L F1 V8, AT, AC, PS,
PB, 10,000 GVWR, Gray, 111,000 Miles, Will Sell
w/o Box - Call For Details **\$8,900**



1985 CHEV G30 HI CUBE VAN
14 Ft. Body w/Wheels Wells, V8, AT, AC, PS, PB,
White, 109,000 Miles **\$6,900**



1994 GMC C1500 SIERRA SL,
4.3L FI V6, AT/OD, PS, PB, AM-FM, Teal Green,
53,000 Miles **\$9,800**



1990 CHEVROLET C1500 CHEY. W/T,
4.3L FI V6, AT, AC, PS, PB, AM-FM, 8 Ft. Bed,
White, 78,000 Miles **\$5,900**

FINANCING AVAILABLE

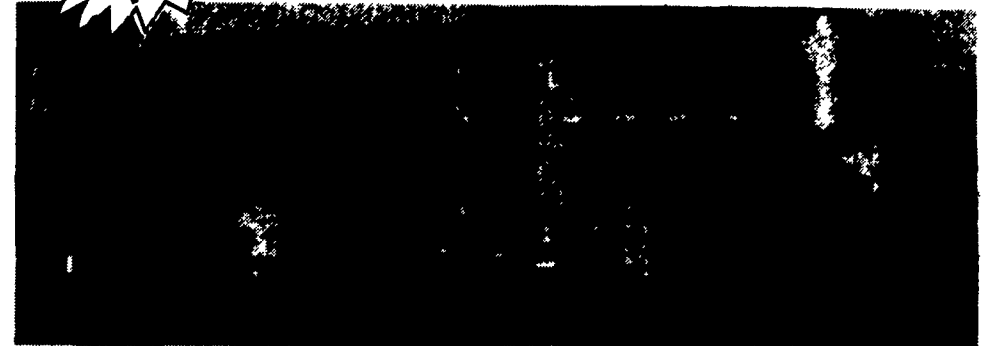
94 FORD E150 CARGO VAN.....\$10,800	89 CHEV K5 BLAZER SILVERADO.....\$9,800
93 PLY GRAND VOYAGER SE.....\$8,500	89 CHEV S10 BLAZER ,4X4.....\$4,995
93 CHEV BEAUVILLE VAN.....\$9,800	88 CHEV C1500 SILVERADO,V8...\$7,800
93 DODGE DAKOTA SPORT.....\$CALL	88 CHEV C30 BOX TK.....\$8,900
92 JEEP CHEROKEE LARADO.....\$CALL	87 DODGE RAM 150, WINDOW VAN \$3,900
91 CHEV ASTRO LT EXT AWD.....\$CALL	87 MAZDA B2000 PU.....\$3,500
91 FORD AEROSTAR XLT.....\$6,900	83 CHEV S-10 PU TK 4X4.....\$2,500
90 CHEV SILVERADO SHORT BED...\$11,500	80 CHEV BONANZA TK, SHORT BED..\$3,995
90 FORD AEROSTAR XL.....\$5,900	

ALSO MANY MORE CARS, TRUCKS & VANS



**PINE TREE
MOTORS**

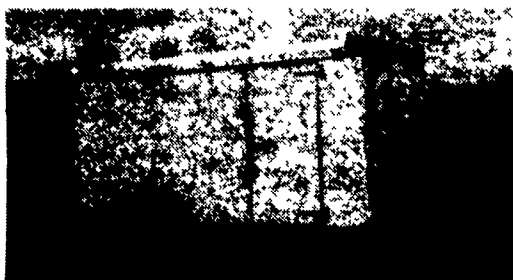
Rt. 322 & Clearview Road, Clay, Lancaster Co., PA
717-738-2242



ALUMINUM STOCK TRAILER



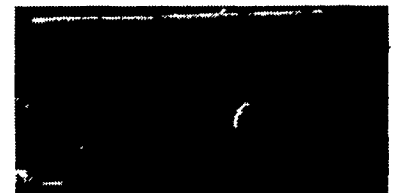
20' STEEL GOOSENECK ECONOLITE TRAILER



STEEL STOCK BUMPER PULL CATTLE OR HORSES



Model 5925 Enclosed Car Hauler



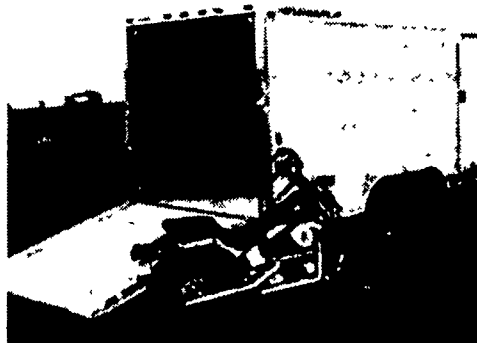
Model 9418 - 2 Horse Side By Side with Walk-Thru Manger to 4' Dressing Room



Model 8205 - 7'x16'

ENCLOSED UTILITY TRAILER

IN STOCK 5'x8' - 6'x10' - 6'x12'



Model 1625 Haul your investment in an enclosed trailer



4161 Oregon Pike, Ephrata, PA 17522

Chevrolet • Oldsmobile • Geo

717-627-1220 or 717-859-7700

AT THE BROWNSTOWN EXIT OF RT. 222