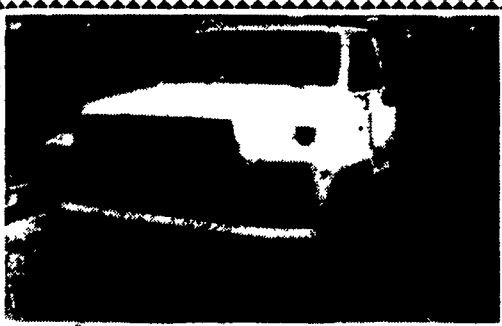




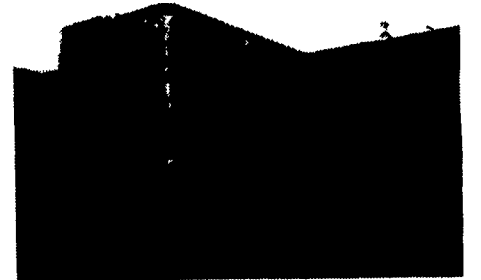
**1973 Ford Grain Truck, 391, V8, 5+2, A.B., P.S, 27,500 GVW, 14' Bed & Hoist, A-1 Cond., \$8,500 OBO**  
**'76 Chevy Grain Truck, 366 V8, 5 Speed, PS, PB, 27,500 GVW, 16' Bed & Hoist, Good Cond. \$5,500 OBO**  
**Call 717-933-4922**



**1989 White GMC**  
 365 Cummins, 10 speed, 4-way lock axles, A/C, 22' Hewey aluminum dump body, barn doors w/grain chute. Good condition,  
**\$38,000 OBO**  
**(717) 866-2525**



**1987 Ford F-700 C+C**  
 370-2V engine, 72" C/A, 5 Speed w/2 speed, very clean truck, **\$4,500 OBO**  
**(610) 932-6111**



**45' Reefer Trailer**  
 Roll-Up Door, Road Ready  
**\$4,000 OBO**  
**717/872-5591**



**48' Reefer Trailer,**  
 1986 Stainless Steel, Air Ride, Excellent Condition  
**\$8500 OBO**  
**717/872-5591**



**1990 GMC 3500**  
 350 Engine, 4 Speed trans, 134,000 miles. New dumping stake bed. Very good truck. (STK#164) Call for price.

**1-800-255-0666**

**35 TRUCKS & TRAILERS**

One pair of 22.5x12.25 aluminum wheels, like new. Call (610)756-6723.

**ROLLBACK TRUCK 1980**  
 Chevy 1 ton w/Jerr-Dann Super Five bed, 1 owner, 50,000 miles. Must See! \$9,500. 410-833-9091

Sporty 1994 F-150 XLT short bed, like new! Custom wheels, power everything, cruise, phone, AC, tow package, bedliner, 8cyl. and more! Must sell for mortgage, \$12,000 OBO. 610-286-1864 leave message.



**(10) '97 Club Cabs 2500, diesel**  
**Club Cab 3500,** dual wheel pickup

**(25) '97 Dakota Club Cabs, 4WD**  
**1995 Dodge SLT Diesel., 4x4 reg., cab., pickup**

**1997 Dodge 3500**  
 Cab, Chassis, Long Wheelbase, 4WD, 5-Speed, Air

**1992 CHEVY C-20**  
 2WD, Diesel, 54K

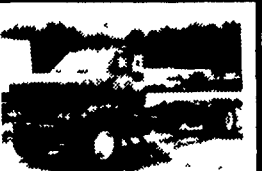
**(5) New Style Dodge Pickups,** used

**ASK FOR MILTON HESS**  
 Certified Truck Specialist  
**717-367-6644**  
**717-653-6667**  
 Elizabethtown, PA

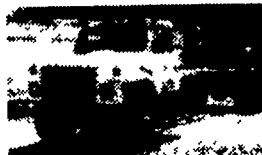
**1997 Ford F350**  
 Power Stroke diesel, XLT, 5-speed, 4x4, 410 rear LS  
**540-885-0000**



**1994 Isuzu NPR - 3.9 Turbo Diesel - Auto - A/C - 15 ft. Body Pull Out Ramp 90,000 miles**



**1986 GMC Topkick - 3208 Cat Diesel 6 Spd., 33,000 GVW, 155" C to A NEW Paint**



**79 & 84 Int DT 466 5+2 Spd., New 11.22.5 Tires, Double Frame, Cab & Chassis, Very Clean**



**16 ft. & 18 ft. Reefer Bodies \$850.00 Each**



**1990 Chevy, 9600 GVW, V8, Auto, 8 Ft. Reefer Body, Thermo King Unit, \$7,500**



**77 & 79 CO 8000 Ford - 3208 Cat - 5+2 Spd. - 39,000 GVW 3400 Gal - 2 Comp Alum. Tank - 2 Meters & Reels Newly Painted**



**1992 IH 4700 - DT 360 - 25,500 GVW, 5 Spd. A/C - 22 ft FRP Body, Ex. Cond. - Off Lease Truck**



**1989 W-6 GMC - Turbo Diesel 5 spd. - 22,000 GVW - 18 ft. FRP Body - Lifegate - Very Clean - Off Lease**

**Martin's Used Trucks & Equipment Inc.**  
 560 Lampeter Rd. Lancaster, Pennsylvania 17602  
**(717) 299-6200 (717) 392-6266**

**\$100 TRAVEL EXPENSE VOUCHER**  
 Pay To The Order Of \_\_\_\_\_  
 Good for travel expense if you live more than 30 miles from Fred Beans Chevrolet Oldsmobile with the purchase of a new or pre-owned car or truck. One voucher per customer only. Must be authorized by your salesperson. A check for \$100 will then be mailed to you.  
 Salesperson Authorization \_\_\_\_\_

**COMMERCIAL HEAVY DUTY • LIGHT DUTY • DUMP BODIES • STAKE BODIES • UTILITY BODIES • VANS • CHASSIS CABS • CUBE TRUCKS COMMERCIAL**



**'97 CHEVY C3500 12' Minuteman Stake**  
 5700 Vortec, auto trans, locking diff, 11,000 GVW. #70604  
**\$21,995**



**WE'LL DELIVER YOUR TRUCK ANYWHERE IN THE USA!**  
**OVER 200 TRUCKS AVAILABLE**  
 1 Tons • 2 Tons • 3 Tons Diesels • Blazers (Full Size & S-10) Suburbans (2-WD & 4-WD) Vans Conversions, Cargos, Astros, APVs, & More!



**FRED BEANS CHEVY TRUCKS**  
 Route 611 North, Doylestown, PA  
 Call Our Commercial Truck Dept...  
**(215) 348-3586**  
**800-341-3232**  
 Visit our new website at [www.fredbeans.com](http://www.fredbeans.com)