

1a CONSTRUCTION EQUIPMENT

15,000 lb. forklift, 17" dual pneumatics, gas, fair condition, \$3,000 OBO. Mid-diecrack Welding, Box 22, Canan Grove Road, New-manstown, PA 17073.

19, 15 ton tri-axle trailer w/boogies and electric brakes, asking \$2895. 717-345-4882.

1976 Case 680E Backhoe, Good-Rubber, heated cab, runs and works OK. (717)486-7499

1979 MF600C track loader, #331010170, good condition, fair U/C, ready to work. \$9500. 717-527-2390

1980 Little Giant hydraulic excavator, Detroit diesel, up and down, 2-buckets, good condition, \$14,000. 610-562-5186

1986 Case 1155D crawler loader, ROPS, lights, GP bucket, 10 Hensley 220 teeth, shanks welded on bucket, 16" pad, 5600 hrs., 1-owner, \$24,000. 410-557-6161

1988 Crosley 20ton tag-along trailer with air brakes, good condition, JD 3X14 trailer plow, good cond. (610)767-2217

1996 NH 665 turbo skid loader, 700 hours, \$17,000 OBO; 1975 Blawnox 65 paver, \$12,500 OBO; 1994 Bomag articulating diesel asphalt roller, 430 hrs., \$14,000 OBO. 717/467-2810.

85 Bobcat 743 skid steer, extra valve, tooth bar, extra tires, good runner, \$6800. 410/893-2405.

Backhoe Loader International Industrial 3414, re-built diesel engine, Drott 4-in-1 bucket, 3pt hitch, quick disconnect 3120 hoe, PTO, front end weights. John 610/678-7525.

Eager Beaver HA-18 tag trailer, SN 7220, 8.25x15 tires, air brakes, excellent condition, \$7,000. Naudain Enterprises, (302)239-6840.

Ford 4500 diesel w/loader and 3pt 32" tree spade. Will separate. (410)658-3015.

Forklift Wholesalers 2000 to 92000 Lb. Lifts Available. 70 in Stock. Sale-Rental-Finance w/ Warranty. Chalk Equipment. (410)686-6800.

JD 455E Crawler Loader, 4-in-1 Bucket, backhoe attachment, cleaned & painted, very good condition, \$25,000. 717/336-7375 No Sunday Calls.

National truck crane, un-mounted, 8 ton cap., 65' boom height w/18' body, very good condition, \$9000 OBO. 717/359-9423.

Salt Spreader, approx. 8 ton capacity, very good condition, \$1800 OBO. 301/724-7160.

Forklift on steel, 2000lb, runs, \$950. 717/354-3105.

Hyster forklift: space saver 60, 6,000 lb lift, LP gas, mono-cushion wheels, good condition, \$2,800. (717)445-4090.

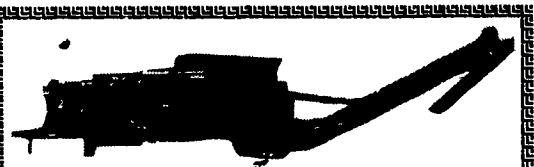
JD 440 crawler loader, good running solid machine, all manuals, extra set of tracks included, needs brakes, \$3,000 OBO. (609)476-3875.

Schramm 125CFM compressor on flatbed trailer with two hose reels and 140GL service fuel tank with hand and electric pumps, \$1200; Pick-up utility body, good condition, \$600. (610)692-4191

T9 IH Crawler Forklift, 5000lb, gas, runs & operates, w/rebuilt head, \$4500. 717/354-3105.



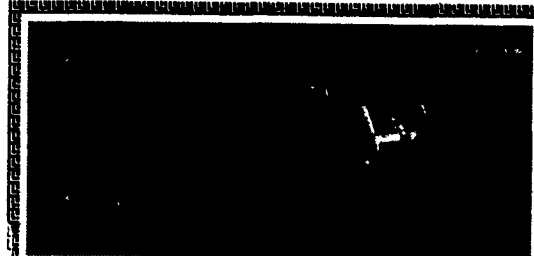
1990 Michigan L-70 Rubber Tire Loader. Quick Change Bucket, A/C and Heat, Excellent Condition
Call 410-893-3623



Morbark Model 1000 Tub Grinder

Processes Wood Waste, Brush, Pallets, Land Clearing Debris and Yard Waste up to Eight Inches in Diameter. 40 to 100 yards Per Hour, Very Low Hours, Excellent Condition. Perfect For Saw Mill, Mulch Business. Tree Companies or Municipalities.

Call 410-893-3623



1996 Case 1840, 400 hrs., front hydraulics, lights, deluxe seat, 63" utility bucket.....\$15,800**

1993 Bobcat 853, 2500 hrs., front hydraulics, cab/heat, lights, new tires, 66" tooth bucket.....\$14,500**

Call Scott at
(717) 530-8483



Dynahoe 4x4 Diesel Wheel Loader Backhoe w/Cab
\$9,500

Heavy Equipment Loader Parts, Inc.
10070 Allentown Blvd., Grantville, PA 17028
(717) 469-0039 (800) 446-0505

FORKLIFTS
2,000 TO 15,000 LB.
\$2,000 & upwards
GAS/LP-DIESEL-ELECTRIC
Cushion-Pneumatic-Rough Terrain
New Komatsu Forklifts Available
PA INDUSTRIAL EQUIPMENT
(610) 369-9778

- RENT FOR LESS -
STONEY CREEK RENTALS
Kutztown, Pa. 19530
NOW RENTING: CRAWLER LOADER
CRAWLER DOZER
FULL-SIZE BACKHOE
HYDRAULIC EXCAVATOR
- DAILY, WEEKLY, OR MONTHLY RENTALS -
610-683-9583



Caterpillar 941/951
Crawler Loaders - 5 To Choose From
\$15,000 & Up

Heavy Equipment Loader Parts, Inc.
10070 Allentown Blvd., Grantville, PA 17028
(717) 469-0039 (800) 446-0505

We Now Accept Visa  & Master Card 

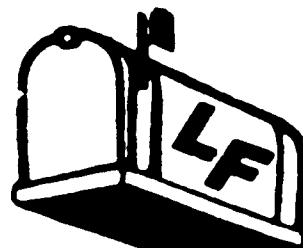
(Word Ads Only)

CLASSIFIED AD ORDER BLANK

PLEASE WRITE CLEARLY

MAIL TO:
LANCASTER FARMING
P.O. Box 609, Ephrata, PA 17522

PLEASE CALL OUR CLASSIFIED AD DEPT. IF YOU WANT TO ADVERTISE A DISPLAY BOX IN OUR PAPER



NOTE: Please do not use this form for Mail Box Market Ads, see instructions with Mailbox Markets.

Name _____
Address _____
City _____ State _____
Zip _____ Phone() _____
Please publish my _____ word ad _____ times
starting with the _____ issue. Classify under
_____ . I enclose _____.

- Check Enclosed
- Visa(13 or 16 numbers)
- Mastercard (16 numbers) (Be sure to include all numbers)

Card # _____
Exp. Date: _____ Signature _____

Box Replies: Ads with answers coming to a box number, c/o Lancaster Farming: \$1.50 per ad per week additional.

This newspaper will not be responsible for more than one incorrect insertion of any advertisement.

CLASSIFIED ADVERTISING RATES
47¢ per word per week - 1 or 2 times
42¢ per word per week - 3 or more times
11 word minimum

Words up to 11	1 Time	2 Times	3 Times
12	5.17	10.34	13.86
13	5.64	11.28	15.12
14	6.11	12.22	16.38
15	6.58	13.16	17.64
16	7.05	14.10	18.90
17	7.52	15.04	20.16
18	7.99	15.98	21.42
19	8.46	16.92	22.68
20	8.93	17.86	23.94
20	9.40	18.80	25.20

DEADLINES:
SECTION D - WEDNESDAY AT 5:00 P.M.
SECTION C - THURSDAY AT 9:00 A.M.
OF EACH WEEK'S PUBLICATION

1	2	3	4	5
6	7	8	9	10
11	12	13	14	15
16	17	18	19	20
21	22	23	24	25
26	27	28	29	30
31	32	33	34	35
36	37	38	39	40

(PHONE NUMBERS COUNT AS ONE WORD)

Lancaster Farming
1 E. Main St.
Ephrata, Pa 17522
717-394-3047
or Litzitz
717-626-164
FAX 717-733-6058
PHONE HOURS:
Mon., Tues.,
Wed. & Fri.
8 a.m. to 5 p.m
Thurs.
7 a.m. to 5 p.m.
OFFICE HOURS:
Mon. thru Fri.
8 a.m. to 5 p.m.
The following categories
are available for your
classified advertising.
In Section C. Deadline
Thursday morning at 9 of
each week's publication

- 1-Farm Equipment
 - 2-Farm Eq. Wanted
- The following categories
are available for your
classified advertising
in Section D. Deadline
Wednesday afternoon at 5
of each week's publication.

- 1a-Construction Equipment
- 3-Silos and Unloaders
- 4-Building and Supplies
- 5-Grain Equipment
- 6-Dairy Equipment
- 7-Livestock Equipment
- 8-Cattle
- 8a-Exotic Animals
- 9-Horses & Mules
- 10-Sheep & Goats
- 11-Swine
- 12-Artificial Breeding
- 13-Hog Eq. & Supplies
- 14-Poultry & Supplies
- 14a-Rattles
- 15-Feed & Seed
- 16-Fertilizer
- 17-Plants
- 18-Fruits & Vegetables
- 19-Nursery
- 20-Lawn & Garden
- 21-Services Offered
- 22-Custom Work
- 23-Help Wanted
- 24-Situations Wanted
- 25-Business Opportunities
- 26-Household
- 27-Pets
- 28-Lost
- 29-Found
- 30-Computers
- 31-Notice
- 32-Miscellaneous
- 32a-Antiques
- 33-Recreational Vehicles
- 34-Autos
- 35-Trucks & Trailers
- 36-Real Estate