

SINCE 1936

M.M. WEAVER & SONS, INC.



MASSEY-FERGUSON
Tractors And Combines

Leola, PA 17540 Phone: (717) 656-2921

Located: 4 miles West of New Holland on Rt. 23, 1 1/2 miles Northeast of Leola on the No. Groffdale Rd., 1 mile on the right, opposite Groffdale Mennonite Church.

Discover
CLAAS
The Harvesting Specialist

USED TRACTORS

MF 165, Gas on Steel, 45 HP...	\$3,500
MF 1085, 82 HP.....	\$5,400
Kubota B6100, 4x4 Hyd Diesel, 14 HP 4' hy blade.....	\$5,900
MF 1190 4x4 Compact 53 HP, 240 Hr....	\$22,500
Case 830 Diesel 65 Hp.....	\$4,500
MF 2745 143 HP 2450 HP	\$12,500
MF 275 67 HP.....	\$8,500
White 2-105 105 HP.....	\$9,500
MF 1155 140 HP fenders.....	\$9,000
MF 285, 84 HP.....	\$9,500
MF 1155 With Cab, 140 HP	\$11,500
MF 1085 82 HP.....	\$7,400
MF 2675 95 HP.....	\$9,000
IH 424, 36 HP.....	\$3,900
Case 580 Industrial with Loader.....	\$5,800
MF 3680 4x4 160 HP.....	\$32,000

USED COMBINES

F 3 Gleaner 4 Row Corn 13' Grain	\$6,000
1978 MF 750 Combine, Gas.	\$3,000
1990 MF 8460 2,573 hrs 15' Floating Grain Head, 6 Row Corn.....	\$64,000
1990 MF8460 with Hillside Cleaning, 20 ft Floating and 6 Row Corn Head, 3219 hrs	\$67,000
1987 MF 8560 Rotary Combine, 1700 hrs	\$52,000
1983 MF860 with 16 ft. Floating Grain Head with 4006 hrs.....	\$14,000
1981 MF860 with 15 ft. Floating Grain Head with 3,400 hrs.....	\$12,000
1981 MF860 with 16 ft. Floating Grain Head with and 6 Row Corn Head 4123 hrs.....	\$19,000
1979 MF760 with 16 ft. Floating Grain Head with 3,867 hrs.....	\$11,500
1979 MF550 with 13 ft. Grain Head with 3,898 hrs	\$11,000
1977 MF750 with 15 ft. Floating Grain Head.....	\$9,000
1975 MF760 with 18 ft. Flex Head with 3263 hrs.....	\$9,500

USED HARVESTERS

JD 3970 3 Row Corn 7' Hay Pickup.....	\$17,500
1994 Claas 690 Jaguar SN 18809-1547 4 Row Corn Head, 10' Hay Pickup Head, Roller Mill, 4WD, Auto Pilot Self Steer Feature, Cable Release Wagon Hitch, Machine Hours: 650, Engine Hours: 975.....	\$135,000
NH 2100, 4RN Cornhead, 10' Hay Head, 4WD, 2500 Hrs., Like New, One Owner	
JD 35 Harvester w/2Row Cornhead.....	\$2,900

HAY EQUIPMENT

New Holland 489 Hay Bine.....	\$2,500
GMR 3200 Vicon Disc Bine 10'6".....	\$9,500
Claas 1550 Rake 21'.....	\$5,600
GMR 2800 Disc Mower Condition 9'4".....	\$9,500
Demo Vicon 1511E 5x6 Round Baler.....	\$9,900
Vicon 1511E Round Baler.....	\$6,900
New Farmlund Bale Wrapper	

MANURE & FEEDING EQUIPMENT

Used Vicon Feeder Main ans Sub Stanchion...	\$1,500
New Idea 364 Manure Spreader 390 Bu. Tand. Axles.....	\$2,600
Teagle Bale Shredder.....	\$1,900

PLOWS & TILLAGE

McConnel 6 Row 30" Cultivator.....	\$1,250
JD 400 Rotary Hoe.....	\$1,400
M&W 5 Tooth V Ripper.....	\$5,700
JD 2500 6 Btm Hyd. Reset Plow.....	\$2,500

MISC. EQUIPMENT

IH 510 Grain Drill.....	\$2,800
Brady 12 Ft. Flail Shredder.....	\$5,500
MF 1017 Backhoe for MF 1035.....	\$3,900

Maximum Power For Your Success

Get a beast of a deal on a new CLASS Jaguar
See your CLASS dealer for details.



The corn cracker can be changed in 5 minutes to switch from corn to hay. The Jaguar's efficient processing produces quality silage for higher milk production.

The operator can safely sharpen the chopping knives and precisely adjust the shearbar from the driver's seat automatically.

Discover
CLAAS
The Harvesting Specialist

Come See The New Claas Harvester Working With The New Row Independent Corn Head That Will Cut Any Width Corn Rows At Any Angle. Also Equipped With Corn Cracker Rolls.

Mark Horst Farm

on

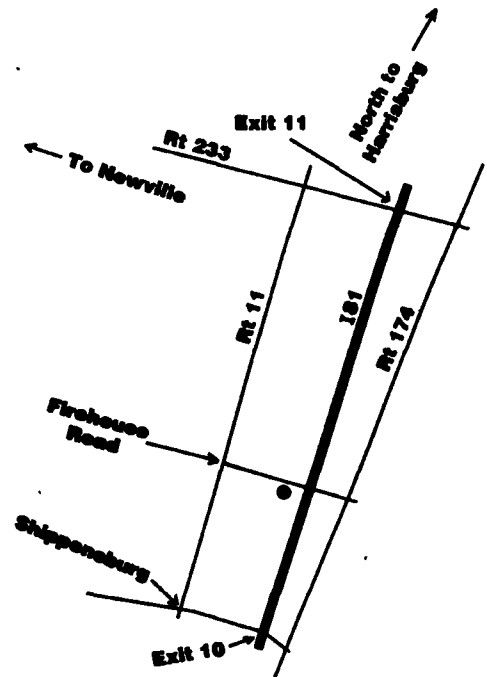
Tuesday,

August 26, 1997

starting at 10:00 AM

Directions:

Go south from Harrisburg on Rt 181 to exit 11 turn West on Rt 233 then south on Rt 11 to Firehouse Road, turn left and go to Walnut Bottom Fire House, field along side of fire house.



NOW IN STOCK

Demo Tractors

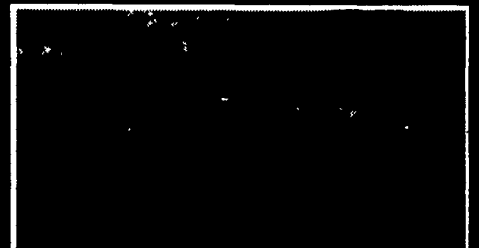
- Model 399-4 Tractor with MF 848 Loader installed.
- Model 399-4 Tractor with Cab
- Model 3120-T, 2 Wheel Drive



1990 MF 8460 Combine with Hillside Cleaning, 20 Ft Floating and 6 Row Corn Head, 2189 Hrs
\$67,000



NH 2100, SN#404504, 1984, 4 RN Cornhead, 10' Hay Head, 4WD, 2500 Hrs, Like New, Rubber Excellent, One Owner
\$59,000



Claas 1550 Hay Rake 21'
5,600