



## Forklifts

New and reconditioned  
For Sale or Rent  
Heavy duty fork  
extensions

Don't trade or throw out that old engine. Have it overhauled for a fraction of the cost of new! All work is guaranteed.

### For Sale

- 3000# Yale Forklift, Cushion Tire
- 4000# Mitsubishi, 1986, Triple Mast
- 4000# Clark, reg. gas \$800
- 5000# Yale Forklift, Cushion Tire
- Electric Scissors Lift, Goes up 25'
- Masts for back of tractor

**SAM STOLTZFUS**  
39 Colonial Rd.,  
Gordonville, PA  
For Service Calls  
717-768-7492

### TRACTORS

- MF 3525 Tractor 4WD w/Cab, 105 HP
- MF 175 d 28" rubber
- MF 165 gas, engine overhauled, new paint
- MF 150 w/ new paint & rubber, overhauled
- MF 50 gas, nice running tractor
- Ferguson 40, gas, nice running, new paint
- MF 35 diesel tractor
- MF 846 loader, quick-tach, fits MF 398
- MF 236 quick-tach loader to fit MF 184x4, like new

### EQUIPMENT

- MF Dyna-balance mowers
- NH 489 haybine
- Glenco field cultivators 10 1/2 ft and 13'
- Cultipackers 10', 12', 14' and different sizes
- Used Brillion cultipacker and cultimulcher parts
- Gravity box and gear
- 2 & 3 bottom 3 pt. plows
- New gates & hay feeders

MF Tractor parts Dismantling 20, 30, 35, 40, 50, 65, 85, 90, 135, 150, 165, 175, 178, 180, 205x4, 265, 270, 283, 285, 383, 399 4WD, 1080, 1085, 1100, 1130, 1105, 1135, 1150, 1155, 2745, 2775, 2805, 3090, 3680, MH 22, 44

### NOLT'S EQUIPMENT

403 Centerville Rd., Newville, PA 17241  
off 81 exit 11 2 miles N on 233

**(717) 776-6242 No Sunday Calls**

### LIKE NEW EQUIPMENT

#### LAWN & GARDEN TRACTORS

- JD 420 20 HP, 60" Hydro \$4,600
- Pwr King 1618, 18 HP, 60" \$3,250
- 96 JD GT262 17 HP, 48" \$3,750
- 96 Simplicity Lndrd 50" Hyd \$3,950
- Honda 5518, 4WD 4WSTR, 52" 3 Pt \$5,700
- Simplicity 17 GTH, 48" Hyd Pwr. Bag \$2,950
- JD 525 17 HP, 48" Fmt Mnt, Hydro \$2,750
- Deutz-Allis-14 HP, 42" Hydro \$1,750
- Cub Cadet 1541, 46" hydro \$2,500
- Cub Cadet 1450, 44" hydro \$1,275
- JD 54" Comm Wikbhd 17 HP \$2,000
- Eazy Vac for CC, like new \$850
- Honda 3009, 9 HP rder \$800
- Snbwlr for JD425, cmplte \$2,400
- Snbwlr for JD 318 \$1,000

#### UTILITY TRACTORS, EQUIP.

- 93 JD 855, 4WD MWR hydro \$18,900
- 87 JD 855, 4WD MWR hydro \$9,900
- Satoh S650G, 27 HP loader \$4,500
- Kubota B7100 4wd gear \$4,250
- Ford 871, live pto, p/s \$3,750
- Ford 800 \$2,950
- Ford 9N \$1,975
- 3 pt 48" Snwbwlr \$975
- 3 pt 6 Ft Rakes, rear whls, new \$495
- JD 272 3pt 6' Grooming Mower \$1,600

### THIS WEEK'S SPECIAL

#### EQUIPMENT FOR SALE OR RENT

##### BADGER

- 3,350 gal. liquid manure tank
- 4,250 gal. liquid manure tank
- 2,300 gal. vacuum tank
- 352 Bushel Manure Spreader
- Ear Corn Roller Mill w/Blower
- Pit Pump 6', 8', 19', 12'
- Weaverline Cart
- Lagoon Pump
- Manure Agitator
- Forage Wagons
- Forage Blowers
- Bedding Chopper
- Handy High Pressure Washer
- Oswalt Mix Wagons
- Post Hole Digger & Driver
- Silo Unloader s- Pack or Ring Drive
- Chop Master - "The Paper Shredder" Shredder"
- Ceramic Tile or 2"x8"x16" Tile



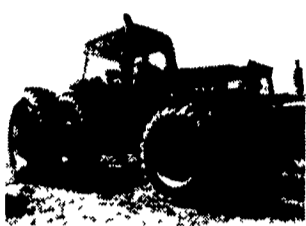
#### WALTER'S TRACTOR SERVICE

6690 Linglestown Rd.  
2.5 mi from RT 81 HERSHEY Ext  
27, RT39 towards Linglestown  
(717) 545-0132 or 469-7110

## Best Buys in Used Equipment



Massey Ferguson 1155 (#13716) 5500 Hours \$8,800



Case IH 7140 (#14450) 4365 Hrs. \$59,000



Case IH 3688 (#13811) 3385 Hrs., 3 Pt. Click Hitch \$20,000



Case-IH 885 (#12394) 2WD 2900 Hours \$12,500



'87 Case IH 1680 (#11677) Combine 1894 Hrs., 2WD \$63,000



Case IH 1680 Combine (#11933) 2WD 2564 Hrs. \$62,000

### TRACTORS

- IH 574 w/loader
- IH 784 2WD
- IH 560 w/loader
- IH 786 w/loader
- IH 3688 2WD
- IH 3588, 4WD
- IH 1586 2WD
- IH 5488
- CIH 885, 2WD
- CIH 7120 2WD
- CIH 7140
- CIH 895
- CIH 5230, 2WD
- (2) CIH 1845C Skid Steer
- JD 3020
- AC 6080 w/Loader
- Ford 850
- ST320
- ST325
- MF 1155

### COMBINES

- Case-IH 1640-2WD, 3105 hrs.
- Case-IH 1660-2WD, 2156 hrs.
- Case-IH 1680-2WD, 1895 hrs.
- Case-IH 1680-4WD, 2334 hrs.
- Case-IH 1680-4WD, 2841 hrs.
- Case-IH 1680-2WD, 2564 hrs.
- Case-IH 1680-2WD, 1898 hrs.
- Case-IH 2166-2WD, 173 hrs.
- Case-IH 2188-4WD, 752 hrs.
- IH 1440-2WD, 1277 hrs.
- IH 1440-4WD
- IH 1460-2WD, 2633 hrs.
- IH 1460-2WD
- IH 1480-2WD
- IH 915-2WD, 3993 hrs.
- IH 815 2WD
- (2) JD 7720 2WD
- MF 550
- AC L3

- BR 23' CF Packer
- BR 14' Cultimulcher
- BR 15' Cultimulcher
- BR 27' N Packer
- BR 28' N Packer
- BR 30' CF Packer
- BR 36' CF Packer
- BR 36' N Packer
- BR 21' CF Packer
- UM 4', 29', 35' Rolling Baskets
- JD 6RN Cultivator
- JD 960 22' Fld. Clt.
- JD 26' Field Cultivator
- BR 32' ND Packer
- DMI 15' Crumbler

### DRILLS

- GP 15'
- (3) GP 30' NT
- GP 24' NT
- JD 8300 18'
- JD 750, 15', 10'
- HB 1206
- IH 610 18x7
- IH 5100, 12'
- IH 5100 Drill, 24x6, 21x7
- MF 12' Drill
- CIH 5100, 24x6

### MISCELLANEOUS

- NH 575 Baler
- Holland 2R Transplanter
- JD 7000 6R Cornplanter
- (3) AC 333 Planter, 11x15
- New Idea 4RN Planter
- JB 500 Gal. Spreader
- JD 400 Rotary Hoe
- JD 535 Baler
- NH 320 Baler
- NH 850 Baler
- NH D2000 Baler
- NH 273 Baler w/thrower
- NH 85 Bale Handler
- NH 499 Mower-Cond.
- IH 1190 Mower Cond.
- Hesston 8200 Mower-Cond
- Hesston 4800 Baler
- Rhino FS-15 Mower
- Rhino 15' Mower
- JD 1508 Mower
- Bush Hog DM80 Mower/FMC
- NH 900 Chopper
- Gehl 1540 Blower
- NI 2RN Cornpicker

### DISCS

- KR 2200 12'
- KR 1966 31', 32'
- (2) KR 4966 31'
- KR 4954 WR
- KR 4979, 34'
- KR 2416 26'
- KR 1927 27'
- KR 1591 18'
- KR 4991NR
- KR 31'
- IH 770, 21'
- IH 490, 25'
- JD 220 21'
- JD 330, 25'
- JD 210 15'
- Case DOT 25'
- Case KB23B
- CIH 496, 20'
- Midland 20
- Miller 20' offset
- MF 820 25'
- Ford 222, 16'
- Pittsburgh, 16'
- White 272, 30'
- AC 18'
- AC 26'
- MF 620, 19'
- MF 620, 24', 25'

### CHISEL PLOWS

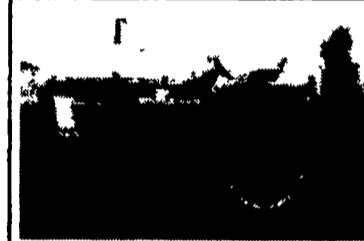
- JD 1650 Chisel Plow
- JD 12' Chisel Plow
- KR 4320A Chisel Plows
- KR 21' Chisel Plow
- SF 27', SF 21' Chisel Plow
- SF 21' Chisel Plow
- BR 7-Shank Subsoiler
- IH 55 Chisel Plow
- Clark 12' Chisel Plow
- GH 10' Chisel Plow
- (2) DMI 530 Subsoiler
- UFT 25' Chisel Plow
- DMI Tiger II - 7 Subsoiler

### PLOWS

- IH 720, 5x18
- IH 560 6x16
- JD 145 6x16
- CIH 145 - 4 Bottom

### MISC. TILLAGE

- IH 45 Field Cult - 18', 12'
- Vicon 21' Fld
- WR 28', 21' 35' Fld. Cult.
- KR 3127A Landsman
- KR 4616 F3 16R Cultivator
- KR 3131 Landsman
- KR 3124 A Landsman
- KR 6164 Landsman
- KR 6161 Landsman
- KR 3112 Landsman
- SF 18' Landsman
- BR 14' Packer
- BR 25' N Packer



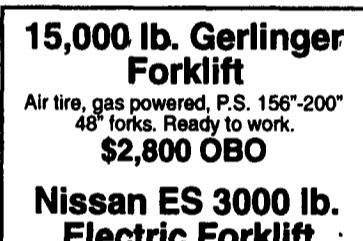
IH 806 Turbo Diesel 110 hp. TA, 540 & 1,000 pto, WF, Dual remotes, 3 point, very good condition. \$6,500



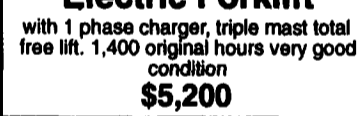
Bil-Jax XLS 2560 Scissor Lift 30' working height, Bat. operated good condition \$2,900



Cat T60C Cushion tire, 6000 lb. Lift, 2 Stage Gas, Auto, P.S. \$1,800



15,000 lb. Gerlinger Forklift Air tire, gas powered, P.S. 156"-200" 48" forks. Ready to work. \$2,800 OBO



Nissan ES 3000 lb. Electric Forklift with 1 phase charger, triple mast total free lift. 1,400 original hours very good condition \$5,200

## LTM Equipment Co.

Myerstown, PA

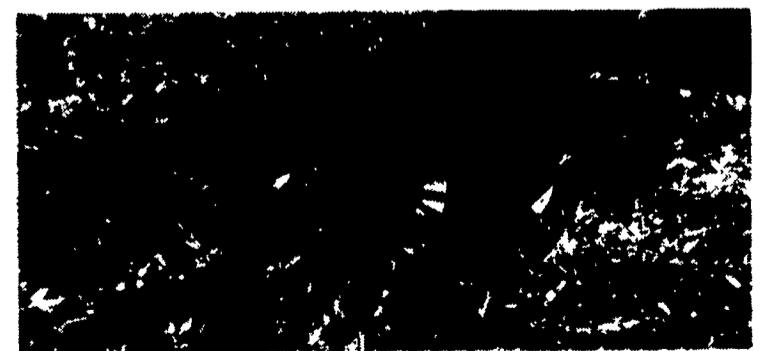
717/949-3582 • 717/949-3303 FAX

We buy, sell and repair used equipment. • Most Trades Accepted

## Brillion SOIL BUILDERS IN STOCK

5-SHANK needs 75 HP plus

7-SHANK Hyd. Adjustable Coulters needs 105 HP plus



We have a size to fit your operation ... stop in and we'll talk.

## LEHIGH AG EQUIPMENT, INC.

Supp.ville Road (off Old Rt 22 near Lehighville and Fogelsville) Lehigh Valley, PA 18033

(610) 398-2553

## HOOPER

HOOPER EQUIPMENT, INC.

MIDDLETOWN, DE

(302) 378-9555 1-800-341-4028

1997 CASE CORPORATION  
Visit us on the internet at <http://www.case.com>  
Case IH is a registered trademark of Case Corporation.

