

NI Cuditioners (2), 1 needs some work. \$1000/both or \$250 & \$750. 908/735-9453.

NI Uni-system attachments, 767 Super Chopper, 2 heads. IH 555 harvester and 3 heads. No Sunday calls, (717)524-2952.

NOTICE: For Rent. Lancaster Silo roller mill blower. Call 717-442-1024 to schedule a rental today. Better silage, more milk. Gap, PA.

Oswald Polygon Mixer by J/Star, Model 531170/2 w/ electronic scale system, operated for 1 year, good condition, \$8500 neg. 540/483-0798.

Papec forage wagon w/8 ton gear, excellent, \$2,250. Westmoreland Co, (412)238-5790.

Patz Bale Choper, like new, \$7000 OBO. Call 717-369-4638

Pik-Kite tomatoe harvester, 1991 model, electronic color sorter, oversize pump, many updates. 717-367-3242 717-361-8747

Post Drivers: Shaver HD8, complete, \$1195; HD10, \$1895. Ask about delivery. Taneytown Farm Equipment, 410/751-1500.

Pronovost baleage tuber, new condition, with tubes. (717)746-1805.

NI 708 Hydro del. gray 839 husking bed, only 1200 hours, very sharp, very fancy outfit, \$14,200. Zeisloft, Bloomsburg, PA 800-919-3322

NI 708 Uni-system, attachments, 767 superchopper, 3R-WN corn head, hay head. Only 1312 hours. 717/865-4650.

ROLL BACK TRUCK 1980 Int. w/15' JD body, one owner, 50,000 miles, \$9,500. 410-833-9091

ROTARY MOWER Lilliston 7 gear drive, pull type, \$650. 410-833-9091

ROUND BALE FEEDERS. ELIMSPORT WELDING SHOP. (717)547-2476 or call toll free 1(888)462-4124.

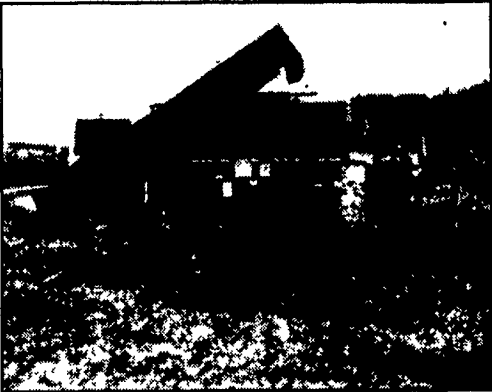
Round bale wrapper. Also Class round baler w/diesel or trade for bale press. 717-442-4769

SAWMILL, \$3795. Free information. Silvcraft Sawmills, 90 Curtwright Drive, #3, Amherst, NY 14221. 800/661-7746.

Several JD 443 Corn heads. Call your 'Head Connection'. Zeisloft at 800/919-3322.

Clark Forklift 18' Mast, Pneumatic Tires, Good Condition \$4,200  
717/529-2512 No Sunday Calls

**AG PRODUCTS COMPANY, INC.**  
TEL. 717-328-3177



**KELLY RYAN** Dependable farm equipment since 1945

**CENTERLINE BAGGERS**

• NEW & USED • REPAIR PARTS  
**FEEDER AND MIX WAGONS**

**PLATFORM FEEDERS**

**SILOFLEX™**



**BIOTAL INOCULANTS**

**3+YRS. SUPER-LIFE SILAGE BAGS**

**COMPETITIVE PRICING**

**CUSTOM BAGGING**

**FINANCING AVAILABLE**

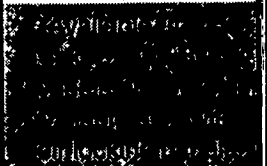
**DIXIE CHOPPER**

**WORLD'S FASTEST**

**LAWN MOWER**



**Rugged 1/4 inch Steel Hay Feeders**



**J&L Equipment**  
RR 3, Box 53B  
Stoystown, PA 15563  
814-893-5086

**YINGLINGS EQUIPMENT**

3291 Taneytown Rd.  
Gettysburg, PA

**35 Combines for Parts Daily Arrivals**

**Parts for most tractors**

IH Oliver Ford JD MF Case & Others,  
Compact Tractors

JUST RECEIVED FOR PARTS: 50 & 65 MF,  
Oliver 70 WF Dsl, (2) 420 JD motors, (2) 702

Uni, (2) Fordsons - 1 Major

**Hay & Combine Parts**

**NEW & USED**

**717-359-4848**

**PARTS**

**Used - 50%**

**Combines, Parts,  
Tires & Wheels**

**WAGNER COMBINES, INC.**

800/843-0522

**UPS daily, Visa/MC**

**H & S**

Design and Engineering

Consulting and Manufacturing

**IN STOCK**

- \* Forage Boxes
- \* (2) Used Forage Boxes right out of the field, ready to go
- \* Gehl 960 w/roof
- \* Dion w/roof
- \* Manure Spreaders V-Twin & Box Type
- \* Running Gears
- \* Bi-Fold Rakes

**\*\* NO Lease Payments \*\***

**\*\*NO Lease charges until May 1, 1998\*\***

**G&D Farm  
Equipment Co.**

Factory Authorized Dealer  
for H&S Manufacturing Co.

1344 N. Penryn Rd., Manheim, PA 17545

**717-664-2207**

**Binkley & Hurst Bros. Your KINZE Dealer**

**Offers Big Savings on New Top of the Line Planters. If you Make Your Purchase and Settle before Oct. 10, 1997.**

**Innovation:**

**"The Ability To Reduce Complex and Difficult Tasks to a Simplicity of Function and Design."**

WILSON'S UNABRIDGED DICTIONARY



**KINZE® Seed Meters: the most dependable, accurate metering in the field today!**

Perfect for corn, soybeans, milo/grain sorghum or cotton! Seeds are mechanically singulated using Finger Pickup (for corn) and KINZE's patented Brush-Type Meters to eliminate unnecessary seed waste as well as the pumps, adjustments and added headaches of air and vacuum systems



**Interplant®!**

Superior planting accuracy in narrow rows with KINZE®! Place every seed with precise depth control and exact spacing in 15" 18" or 19" Interplant® rows using KINZE's patented push units and Brush-Type Seed Meters. Add the front-mounted Double Frame® option and choose solid or skip Interplant® rows plus liquid or dry fertilizer!

**KINZE® 2000 Pull Type Planters.**

**The KINZE® Row Unit.**

Positive seed-to-soil contact! The ideal environment for earliest possible seedling emergence. The options to handle a variety of cropping practices! And the dependability you expect with quality workmanship and components

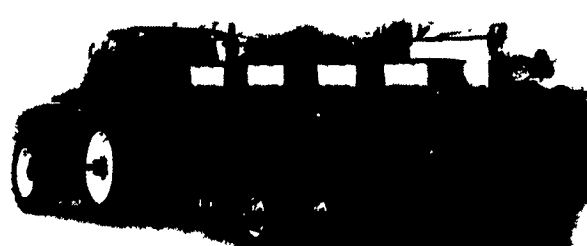
- Double row bearings in the gauge wheels and closing wheels
- 50% more load capacity!
- Reinforced row unit shank assemblies
- Rugged reliable reinforced parallel linkage Standard quick adjustable down force springs and closing wheels



**We Sell Complete Replacement Row Units At Our Parts Dept.**



Easy-access, end-mounted seed transmission meter rate changes simple. Precision-cut plated sprockets Rates every 3% or less Spring-loaded contact drive three smooth engage/disengage of the drive and reduce residue rock and mud problems



Binkley & Hurst offers a host of Replacement Planter Parts and Accessories For Many Older Planters, All Types Of Openers & Closers, Box Toppers For Increase Capacity. Ask For Our Complete 1997 Planter Parts Catalog For Your Ordering Convenience.

Call Our Service Department For Up-Time Planter Evaluation, Complete Rebuilding and Repair Service Now So You Have Better Planting Performance. When Spring Rolls Around Again.

**Don't Wait, Call Today**

**Ask about good financing plans that can work for you. See Binkley & Hurst Bros., Inc. Today!**

**See Binkley & Hurst Bros. Inc. For All Your Service Needs!**

**GEHL**

David Brown

**CASE IH**

**\* REPAIR SERVICE NOTICE \***

**If You Need Tractor Repair Service On These Following Models And Have A Hard Time Finding A Dealer Who Has Years Of Experience - You Need To Call Binkley & Hurst Bros., Inc. NOW!**

**DAVID BROWN  
CASE DAVID BROWN  
• CASE • CASE IH • IH**

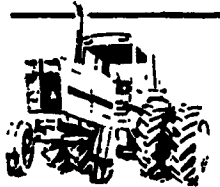
- 1200 David Brown
- 990 David Brown
- 995 David Brown
- 1210 Case David Brown
- 1410 Case David Brown
- 1290 Case
- 1390 Case
- 1490 Case
- 1690 Case
- 1194 Case
- 1294 Case
- 1394 Case IH
- 1494 Case IH
- 1594 Case IH

And Including All Former Case Models Such As Case 70 Series, 90 Series, 94 Series, and Large Case 4 Wheel Drives. We Rebuild Case Power Shift Transmissions Or Whatever You Need With Years of Experience! Plus IH and Case IH Tractor Rebuilding - We Service All Brands Of Skid Loaders! Call Our Service Dept. Now!



**We Have Years Of Experience On Case Power**

**Shift Rebuilding And Total Tractor Reconditioning**



**IH Torque Amplifier Specials... Transmission And Engine Rebuilding**

**We Rebuild Hydrostatic Drives On Skid Loaders...**



**All Brands Of Skid Loader Repairs With Years Of Experience**

**To Make Sure Your Tractor Is In A1 Condition Have A Health Checkup Done By Our Certified Service Technicians On Our Dynamometer - Determines HP Egnie Condition AND Tests PTO & Other Conditions Such As Oil Leaks, Etc. We Can Also Test Hydraulic Pump Performance, Etc. - Other Repair Services Offered**

- Hay Baler & Harvesters
- Corn Planter Rebuilding
- Vacuum Pumps on Manure Tankers

133 Rothville Station Rd.  
P.O. Box 0305  
LITZ, PA 17843-0305  
(717) 628-4705  
1-800-414-4706

**Farm Parts**  
1-800-414-4706

**BINKLEY-HURST  
BROS. INC.**

**BINKLEY-HURST  
BROS. INC.**

133 Rothville Station Rd.  
P.O. Box 0305  
LITZ, PA 17843-0305  
(717) 628-4705  
1-800-414-4706

**Farm Parts**  
1-800-414-4706