



AUGUST 18 - 24, 1997

FULL STURGEON MOON, AUG. 18.

PEARLS BEFORE SWINE

Like gasting pearls before swine, early Americans used to feed caviar to their pigs before learning that the fish eggs found in the "poor folks' diet" of sturgeon were the same delicate roe that could be imported from Russia. By the mid-1800s, American sturgeon was beginning to find its place on the gourmet's menu, and the roe was being salted and packed as caviar. Previously, the same tasty morsels were also used for fish bait for eels and perch, and for common compost.



The gods do not deduct from man's allotted span the hours spent in fishing.

- Babylonian proverb

TIP OF THE WEEK

If you've had trouble with ants, repel them by planting some tansy around your foundation.

TERIYAKI GRILLED FISH

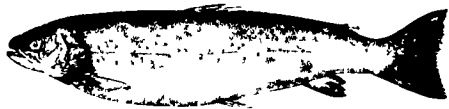
Marinade:

- 1/3 cup tamar soy sauce
- 1/3 cup vegetable oil
- 3 cloves garlic, minced
- 1 tablespoon grated fresh ginger
- 1/4 cup apple juice
- 1/4 cup lemon juice
- 1 tablespoon sugar

- 2 pounds fish fillets
- chopped scallions, to garnish

Mix marinade ingredients, pour over fish, and chill for at least an hour. Grill the fish, basting occasionally with the marinade, or bake in a greased pan at 350° F for 20 minutes. Garnish with scallions and serve over rice.

Makes 4 to 6 servings.



United Feature Syndicate

(Printed in the U.S.A.)

200 Madison Ave
N.Y., N.Y. 10016
(212-293-8500)

THE OLD FARMER'S WEATHER PROVERBS



Thunder after midnight means the day will be lowery.

If the 24th of August be fair and clear, then hope for a prosperous autumn that year.

Dry August and warm does harvest no harm.

Hear an owl hoot? A storm is coming.

Grantsville Livestock

Grantsville, Maryland
Report Supplied by Auction
Sat., August 9, 1997

STOCK BULLS AND STEERS 200-500 LBS. 60.00-88.00.
STOCK HEIFERS 45.00-75.00.
SLAUGHTER STEERS GOOD TO CHOICE, NONE AVAILABLE; MEDIUM TO GOOD 52.50-61.00.
HOLSTEIN STEERS GOOD 41.50-52.00; LIGHT 40.00-47.00.
SLAUGHTER HEIFERS GOOD TO CHOICE, NONE AVAILABLE; MEDIUM TO GOOD 42.00-62.00.
BULLS HEAVY 42.00-52.00, LIGHT 40.00-58.00.
COWS UTILITY HOLSTEINS 35.00-42.50, CANNERS 30.00-35.00, CULLS 28.00 AND DOWN.
VEALS GOOD TO CHOICE UP TO 90.00, MEDIUM TO GOOD 35.00-55.00.
BOB CALVES: 20.00 AND DOWN.
HOLSTEIN BULL CALVES RETURN TO FARM 90-120 LBS. UP TO 78.00.
HOLSTEIN HEIFER CALVES RETURN TO FARM UP TO 110.00; BEEF X CALVES RETURN TO FARM UP TO 110.00.
HOGS: TOP QUALITY 54.00-56.50, HEAVY 45.00-53.00, LIGHT 43.00-70.00, FEEDER PIGS BY THE HEAD, UP TO 53.00.
SOWS: UP TO 43.00.
MALE HOGS: UP TO 42.00.
LAMBS: 70-85 LBS. UP TO 91.00; 85-125 LBS. UP TO 75.00; 30-60 LBS. UP TO 92.00; CULLS 60.00 AND DOWN.
SHEEP: UP TO 40.00.
GOATS: ALL BY THE HEAD, LARGE 50.00-85.00; MEDIUM 20.00-47.00; SMALL 8.00-34.00.

Carlisle Livestock

Carlisle, Pa.
August 12, 1997

SLAUGHTER CATTLE: STEERS, HOLSTEINS SELECT 53.00-56.00; HEIFERS, HOLSTEINS 45.00-48.25; COWS, ACTIVE BREAKING UTILITY AND COMMERCIAL 40.00-45.00; CUTTER AND BONEING UTILITY 37.00-42.50; CANNER AND LOW CUTTER 31.00-36.75; BIG MIDDLE 35.00-39.00; SHELLY 30.00 AND DOWN.
FEEDER CATTLE: FEEDER STEERS,

HOLSTEINS/DAIRY TYPES 450-850 LBS. 42.50-50.00; FEEDER HEIFERS, MEDIUM, LARGE #1 400-750 LBS. 59.50-66.50; FEEDER BULLS 600-850 52.50-54.50; HOLSTEINS/DAIRY TYPES 44.50-49.50.

CALVES: VEALERS STANDARD AND GOOD 20.00-40.00; CALVES RETURNING TO THE FARM, HOLSTEIN BULLS #1 95-130 LBS. 75.00-89.00; HOLSTEIN HEIFERS #2 TO 126.00; BEEF X BULLS TO 75.00; BEEF X HEIFERS TO 65.00.
SWINE: HOGS US#1-3 220-270 LBS. 55.25-56.00; SOWS US#1-3 300-550 LBS. 40.00-46.00; THIN/WEAK/ROUGH TO 39.50.

BOARS: OVER 300 LBS. 35.75-36.00.
FEEDER PIGS: BY THE HEAD, 15-30 LBS. 14.00-31.00.

GOATS: BY THE HEAD, LARGE NANNIES AND BILLIES 66.00-118.00; FANCY KIDS 55.00-70.00; FLESHY KIDS 40.00-54.00; SMALL/THIN KIDS 19.00-39.00.

LAMBS: 120-150 LBS. 65.00-76.00.
SHEEP: ALL WEIGHTS, 37.00-51.00.
SALE EVERY TUES. 5 P.M. FOR RABBITS, POULTRY AND EGGS; 6:30 P.M. FOR LIVESTOCK, STARTING WITH CALVES.

EARLYBIRD PENS FOR CATTLE, COWS AND HOGS CLOSE EVERY TUES. AT 2 P.M. FOR PREMIUM PRICES, USE THESE PENS.

NEXT SPECIAL FEEDER CATTLE SALE TUES., AUG. 19. SALE TIME APPROX. 7:30 P.M.

NEXT SPECIAL FED CATTLE SALE TUES., AUG. 19. PEN LOTS OF CATTLE WILL BE SOLD IN ORDER RECEIVED.

NEXT STATE GRADED FEEDER PIG SALE FRIDAY, AUG. 22. RECEIVING 7-11 A.M. SALE TIME 1:30 P.M.

HATFIELD'S TOP PRICE FOR CASH HOGS ON WED., AUG. 13 EAS 56.00.

Four States Livestock

Hagerstown, Md
August 13, 1997

Report supplied by Auction

SLAUGHTER COWS: 132 HEAD, 2.00-3.00 LOWER. UTILITY 35.00-38.50; HIGH DRESSING TO 40.00; CANNERS 29.00-35.00; SHELLY 28.00 DOWN.

BULLS: 8 HEAD. YG#1 44.00-48.00, 1 AT 53.50; YG#2 41.00-44.00.

FED STEERS: HIGH CHOICE AND PRIME 1100-1450 LBS. 63.00-65.25;

LOW CHOICE 57.00-60.00; SELECT 51.00-57.00.

FED HEIFERS: FEW OFFERED. HIGH CHOICE 1100-1200 LBS. 63.00-64.75.

VEAL CALVES: 167 HEAD. CHOICE 200-350 LBS. 64.00-78.00; CULLS 85-110 LBS. 19.00-25.00; 60-80 LBS. 14.00-20.00.

FARM CALVES: HOLSTEIN BULLS #1 95-120 LBS. 75.00-100.00; #2 40.00-65.00; 80-90 LBS. 25.00-45.00; FEW 95-120 LBS. 90.00-115.00; HOLSTEIN HEIFERS 80-95 LBS. TO 55.00; BEEF X BULLS 50.00-75.00; HEIFERS 50.00-68.00.

BUTCHER HOGS: NO TOPS OFFERED. FEW 260-280 LBS. 49.00-50.75; 300-360 LBS. 42.00-45.00.

SOWS: 300-450 LBS. 38.00-41.50; 500-700 LBS. 44.00-45.00.

STOCK CATTLE: 222 HEAD, 3.00-5.00 LOWER. STEERS MED. & LRGE. FRAME 200-400 LBS. 70.00-86.00; 400-600 LBS. 70.00-88.00; 600-800 LBS. 58.00-69.00; 800-1000 LBS. 55.00-65.00.

HEIFERS: 300-500 LBS. 63.00-73.00; 500-700 LBS. 60.00-74.00; 700-900 LBS. 52.00-64.00.

BULLS: 200-400 LBS. 65.00-80.00; 400-600 LBS. 65.00-82.00; 600-800 LBS. 54.00-66.00; 1 LIMOUSIN 1090 LBS. AT 49.50; DAIRY REPLACEMENTS, NO LRGE OFFERED; MEDIUM 600.00-750.00; 1 JERSEY AT 610.00; SHORTBREDS 350.00-600.00.

SHEEP: 38.00-48.00; LAMBS CHOICE 100-125 LBS. 76.00-79.00; 70-95 LBS. 85.00-96.00.

GOATS: MEDIUM 30.00-56.00.

PIGS AND SHOATS: 20-40 LBS. 25.00-36.00; BY THE LB., 100-150 LBS. 45.00-54.00; 160-200 LBS. 45.00-50.00

Dewart Hay & Livestock

Dewart, Pa.

Monday, August 11, 1997

Report Supplied by Auction

STEERS: 50.00-65.50.

HEIFERS: TOO FEW TO QUOTE.

GOOD COWS. 38.00-44.00.

CANNERS AND CUTTERS 30.00-38.00.

BULLS: 41.00-43.00.

VEAL 90-190 LBS. 60.00-102.00,

70-90 LBS. 20.00-60.00.

HOGS: 40.00-53.75.

SOWS: 40.00-44.75.

FEEDER PIGS: 15.00-47.50 HEAD.

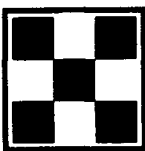
HAY: 70.00-150.00.

STRAW: 70.00-80.00.

CORN: 88.00-94.00.

OATS: 2.10-2.45 BU.

AVAILABLE SPRING '98

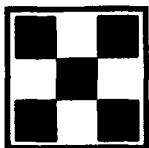


WEANER and/or FEEDER PIGS



Take Advantage of the Benefits of Single Source, Multi-site Raised Pigs

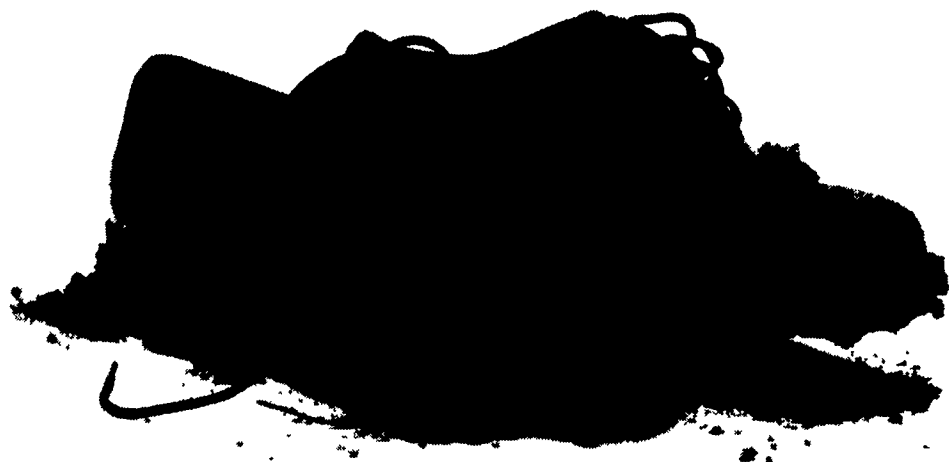
- Features:
- 1600 pigs available/week
 - Single source supply
 - Located in Central PA
 - AI for best genetics
 - Availability sized to finisher needs
 - Financing assistance available



PURINA MILLS, Inc.
800-873-5300

Manufacturing Facilities: Lancaster, Harrisburg, Hagerstown, Wyalusing and Knoxville

Out standing in your field.



The Agri-specialists from Farmers First aren't a bunch of deskbound bankers waiting around for the phone to ring. We get involved with you. Right where you live and work. We lend the money farmers need to keep growing. And, we can help your business in a lot of other ways, too.

We talk the talk. And we walk the walk. (wherever that might lead us)



ANDY TERRELL
(717) 626-4735
EXT. 264

The Agri-specialists
FARMERS FIRST BANK

A SUSQUEHANNA BANC

Member FDIC



JAY HERSHEY
(717) 768-8256