

### Westminster Livestock Auction

Hagerstown, Md.  
August 12, 1997

Report supplied by auction

SLAUGHTER COWS: 166 HEAD, 2.00 LOWER UTILITY 36.00-40.00; HIGH DRESSING 40.00-41.00; CANNERS 31.00-35.00; LIGHTWEIGHTS 25.00-30.00; SHELLY 30.00 DOWN.

BULLS: 21 HEAD, 2.00-3.00 LOWER. YG#1 ALL WEIGHTS 46.00-48.25, 2 AT 50.00 AND 51.25; YG#2 43.00-46.00.

FED STEERS: CHOICE 1100-1300 LBS. 64.00-67.50; LOW CHOICE 61.00-63.50; SELECT 52.00-59.00; SELECT HOLSTEINS 45.00-49.00.

FED HEIFERS: CHOICE 950-1200 LBS. 62.00-64.00; FW 850-950 LBS. 51.50-55.25.

VEAL CALVES: 144 HEAD. CULLS 85-110 LBS. 17.00-22.00; 60-80 LBS. 10.00-18.00.

FARM CALVES: HOLSTEIN BULLS STEADY PRICES. #1 95-120 LBS. 75.00-93.00; 90-95 LBS. 45.00-65.00, #2 85-95 LBS. 20.00-35.00.

HOLSTEIN HEIFERS: FEW OFFERED. BEEF X BULLS 95-120 LBS. 85.00-115.00.

BUTCHER HOGS: 60 HEAD, 1.50 LOWER. US#1-3 225-260 LBS. 54.00-55.00; 1 LOT 276 LBS. AT 52.00.

SOWS: 5 HEAD. 300-500 LBS. 41.00-45.00; FEW 500-650 LBS. TO 45.00.

BOARS: 1 THIN 350 LBS. AT 35.00. STOCK CATTLE: 323 HEAD, STEADY PRICES. STEERS MED. AND LRGE FRAME 200-4000 LBS.

70.00-92.00; 400-600 LBS. 68.00-85.00; 600-800 LBS. 57.00-72.00; 800-1000 LBS. 54.00-64.00.

HEIFERS: MED.&LRGE. FRAME 200-500 LBS. 65.00-79.00; 500-600 LBS. 65.00-77.00; 600-700 LBS. 60.00-72.00.

BULLS: MED. & LRGE. FRAME 200-400 LBS. 70.00-85.00; 400-600 LBS. 67.00-81.00; 600-800 LBS. 54.00-66.00; 800-1000 LBS. 50.00-55.00.

LAMBS: 110 HEAD, 5.00-10.00 HIGHER! HIGH CHOICE 100-120 LBS. 75.00-86.00; 70-95 LBS. 88.00-185.00;

35-60 LBS. 90.00-110.00; GOOD 60-95 LBS. 70.00-80.00.

SHEEP: 20 HEAD, 45.00-55.00; YEARLINGS TO 68.00.

GOATS: LARGE BILLIES 90.00-110.00; NANNIES 50.00-70.00; MEDIUM 40.00-65.00; SMALL 20.00-40.00.

PIGS AND SHOATS: 50 HEAD. BY THE HEAD, 30-40 LBS. 22.00-30.00; 40-50 LBS. 42.00-47.00; THE LB., 90-120 LBS. 57.00-67.00; 130-160 LBS. FEW 60.00-61.00; 160-200 LBS. 50.00-61.00.

NEXT TUES. GRADED PIG SALE, 7 P.M.

### Greencastle Livestock

Greencastle, Pa.  
Aug. 11, 1997

CATTLE 691...PDA...SUPPLY INCLUDED 164 SLAUGHTER STEERS AND HEIFERS, 281 SLAUGHTER COWS, 62 BULLS AND 184 FEEDER CATTLE. COMPARED WITH LAST MONDAY'S SALE...SLAUGHTER STEERS STEADY, COWS 1.00-2.00 LOWER, HEIFERS UNEVENLY STEADY, BULLS 1.00-1.50 LOWER.

SLAUGHTER STEERS FEW HIGH CHOICE AND PRIME 1200-1250 LBS. 67.00-68.00, CHOICE 1000-1290 LBS. 63.50-65.75, SELECT 55.75-63.75, STANDARD 44.25-54.50.

HOLSTEINS: HIGH CHOICE AND PRIME 1330-1520 LBS. 60.00-62.25, FEW CHOICE 1300-1380 LBS. 57.50-59.00, FEW SELECT 52.75-55.00, STANDARD 41.75-47.00.

HEIFERS: FEW HIGH CHOICE AND PRIME 1045-1245 LBS. 66.00-66.50, CHOICE 1065-1195 LBS. 63.50-65.50, SELECT 58.75-63.50, STANDARD 41.00-51.50.

COWS: BREAIING UTILITY AND COMMERCIAL 37.50-43.50, CUTTER AND BONING UTILITY 35.75-42.25, CANNER AND LOW CUTTER 26.00-36.50. SHELLS DOWN TO 14.00.

BULLOCKS: COUPLE SELECT 56.00 AND 56.50.

BULLS: YG#1 1215-1930 LBS. 46.00-52.75, #2 1015-2195 LBS.

41.00-45.00.

FEEDER CATTLE: STEERS MEDIUM AND LARGE FRAME #1 350-575 LBS. 64.50-100.00, 600-820 LBS. 58.00-76.00, FEW MEDIUM FRAME #2 575-775 LBS. 51.00-58.00, LARGE FRAME #2 350-650 LB. HOLSTEINS 38.00-60.00; HEIFERS MEDIUM AND LARGE FRAME #1 200-670 LBS. 45.00-59.00, 220-580 LB. HOLSTEINS 39.50-56.00 WITH A FEW TO 70.00; BULLS MEDIUM AND LARGE FRAME #1 250-575 LBS. 54.00-77.00, FEW MED. FRAME #2 280-825 LBS. 50.00-60.00, LARGE FRAME #2 195-575 LB. HOLSTEINS 44.50-58.00.

CALVES: 544...VEALERS COUPLE CHOICE 195 AND 255 LBS. 73.00 AND 74.00, STANDARD AND GOOD 70-120 LBS. 18.00-24.00, UTILITY 50-75 LBS. 7.00-16.00.

FARM CALVES: #1 HOLSTEIN BULLS STEADY TO SPOTS 10.00 LOWER...#1 HOLSTEIN BULLS 90-125 LBS. 60.00-90.00, MOSTLY 70.00-90.00 WITH A FEW TO 55.00, #2 70-120 LBS. 18.00-50.00; #1 HOLSTEIN HEIFERS 90-115 LBS. 75.00-132.50, ONE 155 LBS. AT 85.00; #2 65-95 LBS. 22.00-60.00. BEEF X BULLS AND HEIFERS 70-100 LBS. 25.00-92.50.

HOGS: 32...SOWS FEW US#1-3 300-395 LBS. 36.50-47.00, 450-660 LBS. 45.50-49.50, FEW MED. 285-460 LBS. 27.00-30.50.

BOARS FEW 400-735 LBS. 35.25-38.00.

FEEDER PIGS: 33...SLAUGHTER, UTILITY 65-110 LBS. 37.00-49.00 PR HEAD.

SHEEP: 107...SLAUGHTER LAMBS CHOICE 50-85 LBS. 75.00-99.00, ONE AT 107.50, 90-120 LBS. 65.00-77.00, 130-165 LBS. 55.00-59.00; SLAUGHTER SHEEP 28.00-88.00, YEARLINGS 42.00-58.00.

GOATS: 257...BY THE HEAD, LARGE BILLIES 87.50-115.00, MEDIUM 52.50-85.00, LARGE NANNIES 62.50-80.00, MEDIUMS 45.00-67.50, LARGE KIDS 35.00-63.00, SMALL 15.00-32.50 PER HEAD.

### Oklahoma City Feeder Cattle

Oklahoma City, OK  
Wed Aug 13, 1997

USDA-OK Dept Ag Market News  
Oklahoma National Stockyards - Weekly Cattle Summary

Compared to last week: Feeder steers and steer calves steady. Feeder heifers steady; heifer calves steady to 2.00 lower. Demand good. Quality of supply plain to average with large percentage of Brahma cross.

Conditions improved for buyers. Weigh-ups full to mostly average. Feeder flesh generally medium to slightly thin. Calves in fleshy condition, few thin. Slaughter cows 1.00-1.50 lower. Slaughter bulls 1.00 lower. Packer demand fair to moderate. Bulk of supply old thin cows. Total of 650 cows and bulls sold with 65 percent going to packers. Receipts this week 10,500; last week 10,009; last year 9,055. Supply consisted of 76 percent yearlings and calves over 600 lbs; 18 percent calves under 600 lbs; 6 percent cows and bulls. Prices follow with weighted average weight and price in parenthesis.

Feeder Steers: Medium and Large 1 300-400 lbs (350 lbs) 104.50-116.00 (110.73); 400-450 lbs (426 lbs) 101.00-107.00 (103.76), 400 lbs thin 112.00; 450-500 lbs (473 lbs) 97.00-101.00 (98.40); 500-550 lbs (517 lbs) 89.50-98.50 (92.57); 550-600 lbs (579 lbs) 84.00-94.60 (88.88); 600- 700 lb calves (650 lbs) 80.25-86.25 (83.13), 600-700 lbs yearlings (650 lbs) 82.00-88.00 (84.98); 700-750 lbs (734 lbs) 80.00-83.75 (82.11); 750-800 lbs (783 lbs) 79.35-81.75 (80.43); 800-850 lbs (831 lbs) 77.75-81.00 (79.73); 850-900 lbs (871 lbs) 77.00-80.00 (78.23); 900- 975 lbs (950 lbs) 72.50-76.00 (74.23).

Feeder Heifers: Medium and Large 1 300-350 lbs (344 lbs) 94.50-96.00 (95.19); 350-400 lbs (385 lbs) 89.00-93.00 (91.04); 400-450 lbs (428 lbs) 85.00-91.50 (89.48), 400 lbs thin 96.00; 450-500 lbs (463 lbs) 82.00- 90.00 (85.95); 500-600 lbs calves (550 lbs) 78.00-84.50 (81.33); 500- 600 lb yearlings (550 lbs) 81.50-85.25 (83.60); 600-650 lbs (634 lbs) 78.75-83.00 (80.35); 650-700 lbs (660 lbs) 79.50-81.75 (81.30); 700- 750 lbs (722 lbs) 76.00-80.10 (77.96); 750-800 lbs (768 lbs) 73.75-79.75 (75.16); 800-900 lbs (850 lbs) 72.50-75.00 (73.17).

Slaughter Cows: Average dressing: Cutters 34.00-37.50; Utilities 36.00-38.25;

high dressing mostly Utilites 39.00-42.00, high dressing/ high boning 42.50-43.00; low dressing Cutters 31.00-34.50; few Utilities 33.00-36.00. Few Canners 26.50-30.50.

Estimated dressed cost at Oklahoma National Stockyards: Cutters 77.20; Boners 75.95; Breakers 71.50; Canners 73.40; Bulls 87.40.

Slaughter Bulls: Yield Grade 1 1350-2050 lbs average dressing 47.00-49.00; high dressing 50.00-52.50; low dressing 45.00-48.50, few fat 44.50-47.50.

Replacement Cows: Pretested for Bangs, pregnancy, and age Medium and Large 1 single head sales 2-4 yr old 900-1100 lbs 2-4 month bred high quality 500.00-600.00; 5-7 yr old 950-1250 lbs 4-7 month bred avg quality 450.00-500.00.

### Lebanon Valley Livestock

Fredericksburg, PA  
Tuesday, August 12, 1997

Report supplied by Auction

STEERS: HIGH CHOICE AND PRIME 1200-1500 LBS. UP TO 66.00; CHOICE 1100-1450 LBS. UP TO 62.25.

HOLSTEINS: HIGH CHOICE AND PRIME 1100-1750 LBS. UP TO 59.75; CHOICE UP TO 54.00; SELECT UP TO 50.00; STANDARD UP TO 45.00.

HEIFERS: CHOICE UP TO 57.50; SELECT UP TO 48.75; STANDARD UP TO 40.00.

COWS: BREAKING UTILITY AND COMMERCIAL UP TO 44.50; CUTTER AND BONING UTILITY UP TO 36.50; CANNER AND LOW CUTTER UP TO 33.00; SHELLS 30.00 AND DOWN.

BULLS: YG#1 ALL WEIGHTS, 49.00. CALVES: STANDARD AND GOOD UP TO 60.00; UTILITY 25.00 AND DOWN.

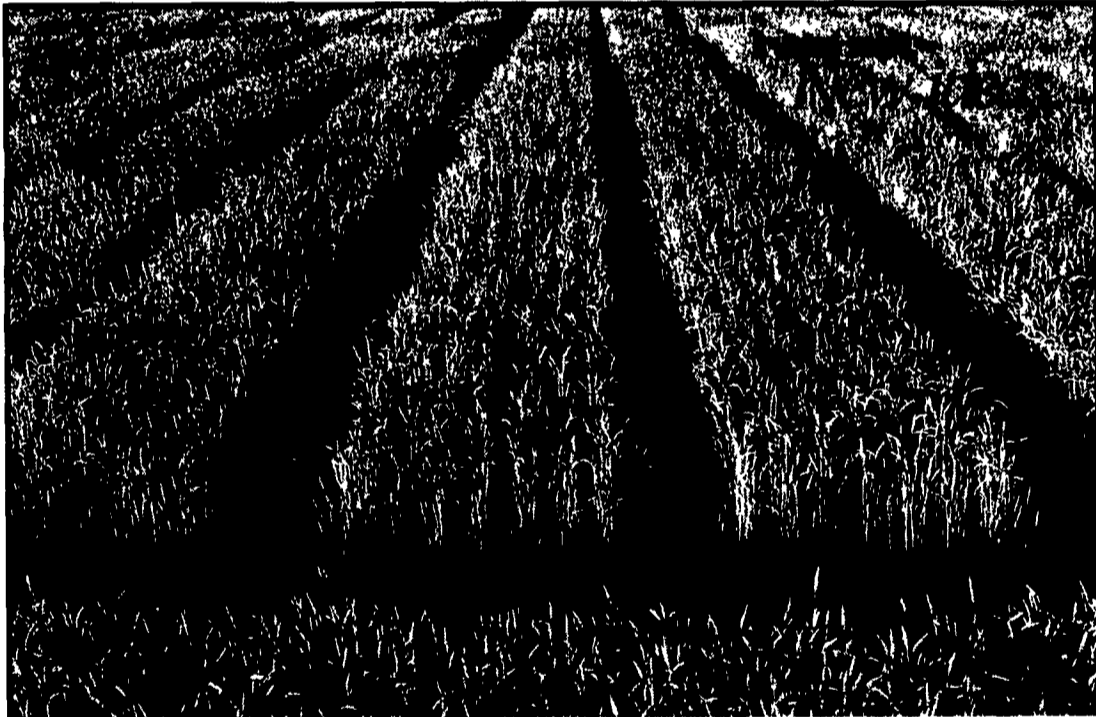
FARM CALVES: #1 HOLSTEIN BULLS UP TO 84.00, #2 UP TO 72.00; #1 HOLSTEIN HEIFERS UP TO 102.50, #2 HOLSTEIN HEIFERS UP TO 75.00.

HOGS: BARROWS AND GILTS US#1-2 UP TO 53.00.

SOWS: US#1-3 UP TO 47.50.

BOARS 36.00-37.00.

SHEEP: CHOICE 68.00. SLAUGHTER SHEEP: 35.00-38.00.



# Over 100 Bu/A of wheat and counting.

Thanks to Hoffman, it's been a record harvest in central Pennsylvania.

Hoffman 95 Brand wheat is making quite a name for itself in central Pennsylvania.

Planting this adaptable, hardy variety, many farmers here harvested record wheat yields this summer—with documented production levels of over 100 bushels per acre and top test weights of more than 60 lbs. per bushel.

As central Pennsylvania farmers have discovered, its excellent standability makes Hoffman 95 Brand wheat easy to combine. It also provides strong disease resistance for maximum yield and grain quality.

Already a top-seller for Hoffman Seeds, Hoffman 95 Brand wheat is sure to tip the scales next season, too. Ask your Hoffman Seeds' dealer about the yield potential.

of Hoffman wheat varieties for your farm. Or call us at 800/776-7929 or visit our web site at [www.hoffmanseeds.com](http://www.hoffmanseeds.com).

After all, records were made to be broken.



## HAMMER MILLS

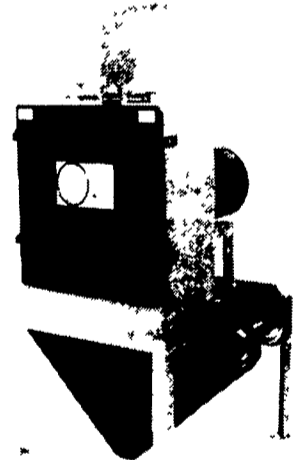
for Grinding High Moisture & Dry Grains



Grinds Finer than Roller Mills.

#### Features

- Low initial cost
- Low maintenance
- Low operating cost
- Easy serviceability
- 360° screen
- Reversible hammers & screens
- Compact design
- Heavy duty plate magnet
- Dust tight enclosure
- Removable wear plate
- Self locking door latches



Manufactured by:

**automatic farm systems**

608 E. Evergreen Road, Lebanon, PA 17042

Phone: 717-274-5333

Contact your nearest dealer listed below...

<b>Rovendale Ag</b> Watsontown, PA 717-538-3564	<b>Marvin Zimmerman</b> Oakland PA 717-463-9731	<b>Big Valley Repair Service</b> Belleville, PA 717-667-9358	<b>Cedar Crest Equip.</b> Lebanon PA 717-270-6600
<b>Keystone Mills</b> Romulus NY 315-549-8226	<b>Nissley Feed Equipment</b> Willow Street PA 717-786-7654	<b>Witmer Implement</b> Shippensburg PA 717-532-6139	<b>Martin Equip. Co.</b> Chambersburg PA 717-263-3505
<b>A.N. Martin Grain Systems</b> Clyde NY 315-923-9118		<b>Zeiset Equipment</b> Manheim PA 717-665-4056	<b>Harold's Equip.</b> Dundee OH 330-893-2348

## WE CUSTOM MANUFACTURE.

Painted, Galvanized and Stainless Steel Fabrication, Feed Bins, Feeders, Hoppers, Covers, Dump Pits, Augers, and Control Systems to Automate Your Operation.