

**Frederick Livestock Auction**

Frederick, Md.  
August 11, 1997

**Report Supplied by Auction**

SLAUGHTER COWS: 132 HEAD, 1.50 LOWER. UTILITY 37.00-41.50; HIGH DRESSING FEW TO 44.00; CANNERS 32.00-37.00; SHELLY 32.00 DOWN.  
BULLS: YG#1 1300 LBS. 48.00-50.50; YG#2 1200-1800 LBS. TO 46.50.  
FED STEERS: 1 CHOICE HOLSTEINS 1630 LBS. 56.00; SELECT HOLSTEINS 1250 LBS. 47.00-49.00.  
FED HEIFERS: LOW CHOICE HOLSTEINS 1310 LBS. 47.00.  
VEAL CALVES: 325 HEAD. CULLS 85-110 LBS. 17.00-23.00; 60-80 LBS. 12.00-20.00.  
FARM CALVES: 5.00-8.00 HIGHER. HOLSTEIN BULLS #1 95-120 LBS. 70.00-83.00; 90 LBS. 35.00-50.00; #2 80-90 LBS. 20.00-30.00; HOLSTEIN HEIFERS #2 80-100 LBS. 120.00-147.00; #2 80-100 LBS. 60.00-100.00; BEEF X BULLS TO 77.00; HEIFERS TO 60.00.  
BUTCHER HOGS: 65 HEAD, .50 LOWER. US#1-3 230-260 LBS. 54.00-55.00; 190-215 LBS. 48.00-50.50. SOWS: 400-650 LBS. 39.00-42.00; THIN 37.00.  
BOARS: 500 LBS. TO 35.50.  
STOCK CATTLE: 55 HEAD. STEERS

300-500 LBS. TO 84.50; 600-800 LBS. TO 67.50.  
HEIFERS: 300-500 LBS. 57.00-67.00; 500-700 LBS. 54.00-64.00; 700-900 LBS. 48.00-60.00; HOLSTEINS 300 LBS. TO 73.00.  
BULLS: 200-400 LBS. 70.00-85.00.  
LAMBS: CHOICE 95-110 LBS. 78.00-83.00.  
GOATS: LARGE TO 75.00; MEDIUM 35.00-60.00.  
PIGS AND SHOATS: BY THE HEAD, 7 HEAD 40 LBS. 37.00; 4 HEAD 60 LBS. 46.00.

**New Holland Sales Stables Goat and Sheep Sale**

Monday, Aug. 11, 1997

	Calves	Sheep	Goats
Today	138	489	1206
Last Week	228	966	1710

CALVES: VEALERS STEADY; SLAUGHTER CALVES FIRM TO 5.00 HIGHER. DEMAND FAIR FOR HOLSTEIN BULLS AND HEIFERS RETURN TO FARM.  
VEALERS: CHOICE 180-290 LBS. 75.00-85.00; HIGH GOOD AND LOW CHOICE 80-115 LBS. 12.00-26.00, COUPLE 26.00-35.00.  
SLAUGHTER CALVES: CHOICE 300-450 LBS. 60.00-75.00; GOOD 275-450 LBS. 50.00-65.00.  
RETURNED TO FARM: BULK 95-120

LB. HOLSTEIN BULLS 72.00-88.00; SMALL FRAME 80-105 LBS. 60.00-67.00, FEW 90-120 LB. HOLSTEIN HEIFERS 85.00-112.00; COUPLE SMALL FRAME 80-100 LBS. 42.00-77.00.  
SHEEP: SLAUGHTER LAMBS STEADY; SLAUGHTER EWES 5.00-10.00 HIGHER.  
SLAUGHTER LAMBS: CHOICE 1-2 50-70 LBS. 95.00-120.00; 70-90 LBS. 80.00-100.00, 90-110 LBS. 75.00-85.00, FEW 1-3 110-140 LBS. 65.00-70.00.  
SLAUGHTER EWES: CHOICE 1-3 INCLUDING YEARLINGS 50.00-65.00; UTILITY AND GOOD 1-3 35.00-65.00.  
GOATS: BY THE HEAD, LARGE BILLIES 100.00-130.00, MEDIUM 70.00-100.00; MEDIUM AND LARGE MUTTON 60.00-90.00; MEDIUM NAN-NIES 40.00-55.00, FEW LARGE 55.00-70.00; GOOD AND CHOICE YEARLINGS 50.00-80.00; CHOICE KIDS 35.00-50.00; GOOD 20.00-30.00.

**Friend's Stockyard Inc.**

Accident, Md. 21520

**Report Supplied by Auction**

August 11, 1997

STOCK BULLS AND STEERS (200-500 LBS.) 57.00-85.00.  
STOCK HEIFERS: 40.00-72.00.  
SLAUGHTER STEERS: GOOD TO CHOICE 62.00-63.60; MEDIUM TO GOOD 50.00-61.50, HEAVY CHOICE

OVER 1450 LB. 55.00-61.75.

HOLSTEIN STEERS: HEAVY CHOICE 37.00-49.00, LIGHT 34.00-44.00.  
SLAUGHTER HEIFERS: GOOD TO CHOICE 59.00-61.75; MEDIUM TO GOOD 47.00-58.50.  
BULLS: HEAVY 45.00-50.00, LIGHT 35.00-54.00.  
COWS: UTILITY (HOLSTEIN) 35.00-42.50, COMMERCIAL TO GOOD 30.00-35.00, CULL COWS 28.00 AND DOWN.  
VEALS: GOOD TO CHOICE 50.00-74.00, MEDIUM TO GOOD 20.00-46.00.  
BOB CALVES: 22.00 AND DOWN.  
HOLSTEIN BULL CALVES — RETURN TO FARM (90 TO 120 LB.)- 50.00-96.00.  
HOLSTEIN HEIFER CALVES — RETURN TO FARM (90 TO 120 LB.)- UP TO 120.00.  
BEEF CROSS CALVES — RETURN TO FARM UP TO 60.00.  
HOGS: TOP QUALITY UP TO 57.00, HEAVY UP TO 55.00, LIGHT 30.00-48.00.  
SOWS: 35.00-42.50.  
MALE HOGS: 27.00-34.00.  
LAMBS, LIGHT 65.00-80.00; FEEDER LAMBS 50.00-72.00.  
SHEEP: 15.00-38.00.  
LIVESTOCK PRICES ARE ALL GIVEN PER HUNDRED WEIGHT!

Receipts this week: 250 Last week: 225 Last year 250;  
Compared to last week, Slaughter steers weak to 1.00 lower, except holstein steers steady. Slaughter heifers steady. Slaughter cows 2.00-3.00 lower, most decline on high Yielding Breaking and Boning Utility. Slaughter bulls steady. Supply mainly Select and Choice steers and heifers. Moderate supply of holstein steers. Around 15% cows.  
SLAUGHTER STEERS: Choice 2-4 1100-1425 lbs. 61.00-63.00; Several Select and Choice 2-3 1000-1350 lbs. 59.00-61.00; Select 2-3 950-1150 lbs. 56.00-59.00. Holstein Steers: Choice 2-3 1400-1500 lbs. 58.00-61.00; Select and Choice 2-3 1300-1400 lbs. 56.00-59.00; Select 2-3 1250-1400 lbs. 50.00-56.00.  
SLAUGHTER HEIFERS: Choice 2-4 1000-1300 lbs. 61.00-63.00, package 1435 lbs. at 63.25; Select and Choice 2-3 975-1100 lbs. 59.00-61.00; Y6 ct 2-3 975-1150 lbs. 56.00-59.00.  
SLAUGHTER COWS: Cutter, Boning and Breaking Utility 1-4 36.00-39.00; High Yielding 39.00-40.00; High Yielding Boning and Breaking Utility 2-3 40.00-41.00; Canner and Low Cutter 1-2 33.00-36.00; Shelly Canner 1-2 30.00-33.00.  
BULLS: Yield Grade 1-2 1250-1900 lbs. 44.00-48.00; Individual 1685 lbs. Yield Grade 1 at 50.00.  
FEEDER STEERS: Medium and Large Frame 1, Thin to Moderately fleshy; 1000-1075 lbs. 60.00-66.00; Moderately Fleshy to Fleshy 1050-1100 lbs. 1050-1100 lbs. 58.00-61.00. FEEDER HEIFERS: Part load Thin to Moderately Fleshy 985 lbs. at 50.50.

**St. Louis Cattle, Hogs**

Springfield IL  
Monday August 11, 1997  
USDA-II Market News Service National Stockyards Illinois terminal slaughter cattle market



**Grand Champion Market Lamb**  
Exhibited by Michelle Cornman, Big Spring FFA, purchased by Hoss's Steak & Sea House, Bill Campbell

**Cumberland County FFA 18th Annual Robert L. Finkenbinder FFA Livestock Show and Sale**

Shippensburg Community Fair  
July 22, 1997



**Reserve Grand Champion Market Lamb**  
Exhibited by Bill Leib, Cumberland Valley FFA, purchased by Wolf's Bus Lines, Herb Gungell



**Grand Champion Pair of Market Lambs**  
Exhibited by Heather Lehman, Cumberland Valley FFA, purchased by Hubner Seeds/Ron Souder, Kate Lemmon



**Grand Champion Market Goat**  
Exhibited by Bill Leib, Cumberland Valley FFA, purchased by York Farm Credit, Duane Bosler



**Reserve Grand Champion Market Goat**  
Exhibited by Derrick Carpenter, Big Spring FFA, purchased by Agway Ag Products, Matt Martenas



**Grand Champion Pair of Market Goats**  
Exhibited by Crystal Robinson, Shippensburg FFA, purchased by William Piper



**Grand Champion Market Steer**  
Exhibited by Michelle Cornman, Big Spring FFA, purchased by Hoss's Steak & Sea House, Bill Campbell



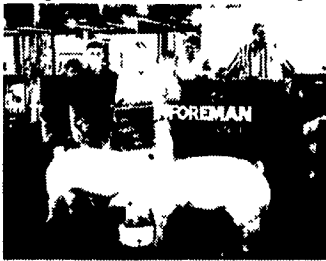
**Reserve Grand Champion Market Steer**  
Exhibited by Bobby Davidson, Shippensburg FFA, purchased by Wenger's Meats and Ice, Brad Wenger



**Grand Champion Market Hog**  
Exhibited by Bill Leib, Cumberland Valley FFA, purchased by Hatfield, INC., Duff George



**Reserve Grand Champion Market Hog**  
Exhibited by Bill Leib, Cumberland Valley FFA, purchased by Hatfield, INC., Duff George



**Champion Pair of Market Hogs**  
Exhibited by Mark Goodhart, Shippensburg FFA, purchased by Cumberland Valley Cooperative, Scott Hodgson

**We wish to thank the community for its continued support 1997 Honors List**

Company/Individual	Location	Yrs.	Company/Individual	Location	Yrs.
Agway Ag Products	Shippensburg	95-97	JOHN W GLEIM, JR INC	Carlisle	96-97
Big Spring Fish & Game	Newburg	96-97	Keith's Farm & Dairy Supplies	Newville	95-97
Country Butcher Shop	Carlisle	80-97	Ken's Agri Service	Carlisle	89-97
Cumberland Valley Cooperative	Shippensburg	84-88, 90-97	Lemmon Farm	Carlisle	90-97
Dan Hershey Auctioneering Service	Shippensburg	83, 93-97	Newville Builders Supply	Newville	80-89 91-97
Doug Wallick Insurance	Camp Hill	84-97	Newville Print Shop	Newville	84-97
F & M Trust	Chambersburg	97	North Mountain Butcher Shop	Newville	80-97
Farmers National Bank	Newville	80-97	Orrstown Bank	Shippensburg	80-97
Farrell Veterinary Clinic	Newville	88-95, 97	William L. Piper	Carlisle	91-94, 96-97
Fred Potteiger & Sons	Carlisle	81-97	PNC	Gettysburg	96-97
G L Fogelsohn Agency	Shippensburg	83-97	Shetron Welding	Carlisle	92-97
Keith Ginter	Newburg	96-97	Sunday's Mill Company	Carlisle	81-97
Good's Livestock INC	Denver, PA	97	Wayne F Craig & Sons	Shippensburg	80-97
Greencastle Livestock Market	Greencastle	84-97	Weber Veterinary Clinic	Mechanicsburg	92, 97
HATFIELD INC	Hatfield	80-97	Wenger Meats & Ice Co	Carlisle	86-93, 96-97
Christian R. Herr	Camp Hill	93-97	Wengers of Myerstown	Myerstown	97
Hoss's Steak & Sea House	Duncansville	90-97	Williams Grove Steam Engine Assn	Ellittsburg	92-97
HubnerSeed/Ronald Souder	Mechanicsburg	83 & 86, 96-97	Wolf's Bus Lines, Inc	York Springs	91-97
Huntsdale Stock Farms	Carlisle	83-97	York Farm Credit	Carlisle	80-97

**This Is A 3950 John Deere Harvester.**

Cut silage at 1" to 1 1/4" long. Run through high speed 1/4" cut crimping rolls.

Also available: 3950, 3960, 3970  
On hand with Rolls Installed

**For Sale Metal Alert Works Good \$18,000**

**LANCASTER SILO CO. INC.**  
2008 Horseshoe Road, Lancaster, PA  
Salesman (717) 263-3521 or (888)233-1852

**Corn Field Day**

C. Michael Scheeler Farm  
Greenfields, Route 213  
Cecilton, MD

Tuesday, August 26, 1997  
(rain or shine)  
8:00 A.M. - 10:00 A.M.

See the new **MAXIMIZER™ TECHNOLOGY** corn hybrids from Novartis Seeds, Inc. with **KnockOut™** and **YieldGard™** European corn borer control

Hoffman Seeds Sales and Marketing Personnel will be there to answer your questions on the new **MAXIMIZER TECHNOLOGY** products now available.

coffee and donuts will be served

Contact: Mike Scheeler @ 410-275-2267 or Jeff Cunningham @ 1-800-776-7929

sponsored by:  
**Hoffman Seeds, Inc.**  
144 Main St.  
Landisville, PA

**Trusted Value. New Ideas.**