



Many different field demonstrations attract visitors to Ag Progress Days. Competing equipment of different makes and models work side by side to create interest in the annual Penn State show. Again more than 300 exhibitors with new machinery, products, and services will provide the support of

the show to be held at the Russell E. Larson Agricultural Research Center, at Rockspring. The theme, "Pennsylvania Agriculture, A Moving Force in a Changing World," sets the stage for all the activity.

Take A Tractor For A Spin At Ag Progress Days

UNIVERSITY PARK (Centre Co.) — If you're a homeowner or a farmer, and you're in the market for a new lawn or farm tractor, a unique opportunity awaits you at Penn State's Ag Progress Days, Aug. 12-14.

By visiting the expanded "ride-and-drive" area, you can test drive and compare the latest tractor models from a variety of manufacturers. New to this year's event is a separate lawn and garden tractor ride-and-drive featuring vehicles with less than 35 horsepower that will appeal to homeowners with large yards or farmers looking for equipment to handle small jobs.

"We'll be bringing two manufacturers' full lines of lawn and compact diesel tractors," says Doug Kissell of Keystone Power Equipment in State College, Pa. "The lawn tractors are suitable for mowing suburban yards or around farm homesteads. The compact diesel tractors are useful for part-time or hobby farmers, and for smaller jobs such as mowing, pulling a small spreader or hauling bales of hay."

"The ride-and-drive will give visitors hands-on experience with the latest models," says Joe Nolf of Dunkle and Grief in Centre Hall, Pa. "They'll be able to test-drive a full range of lawn and compact utility models — including those with two-wheel steering, four-wheel steering and various size decks — and compare their maneuverability, serviceability and comfort."

In addition to the tractor ride-and-drive, more than 300 commercial exhibitors will set up displays at Ag Progress Days. Besides tractors and other heavy machinery, their wares range from seed, feed and fertilizer to insurance, consulting services, small power equipment and many other products.

"Visitors can find information on state-of-the-art equipment and cutting-edge techniques, all in one convenient location," says Bob

Oberheim, Ag Progress Days manager. "Ag Progress Days is one-stop shopping for farmers."

Several field demonstrations will show new agricultural machinery and techniques in action. Those watching the daily tillage demonstration will see the latest in tractor technology.

"We'll be using a new Quadtrac tractor," says Charlie Hooper of C.B. Hooper and Son in Intercourse, Pa. "Rather than standard wheels, this model has four independent tank-like tracks that permit more ground contact. And that means better traction and maneuverability, a smoother ride and less soil compaction." Hooper says the new Quadtrac line will be in full production in the near future.

Because machinery accidents are the leading cause of farm injuries and deaths, another demonstration will focus on farm safety. Remote-controlled full-scale equipment will undergo mishaps while being operated under typical conditions, showing observers the causes and effects of machinery accidents and how to avoid them.

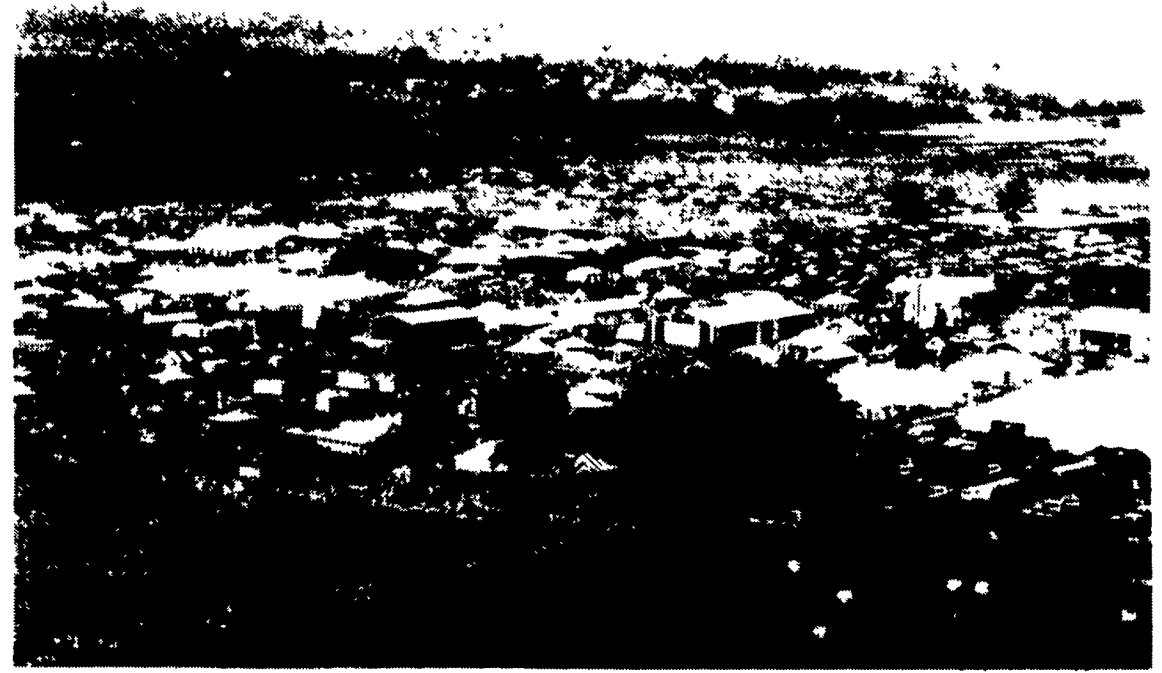
Other planned field demonstrations will focus on precision farming, including global positioning and geographic information systems and yield monitoring; composting; mowing; round silage baling; and round bale handling.

In addition, various exhibits and workshops will feature information on the latest research-based production techniques, government programs and regulations, and various educational initiatives, ranging from health and safety to forest stewardship.

Penn State's Ag Progress Days features more than 500 acres of educational and commercial exhibits, tours and machinery demonstrations. It is held at the Russell E. Larson Agricultural Research Center at Rock Springs, nine miles southwest of State College on Route 45. Hours are 9 a.m. to 5

p.m. Tuesday and Thursday, with extended hours of 9 a.m. to 8 p.m. on Wednesday. Admission and parking are free.

For more information, call (800) PSU-1010 toll-free from July 14 to August 14 or visit the Ag Progress Days on the World Wide Web at www.cas.psu.edu/docs/AGIS/APD/APD.HTML.



Here you get a bird's eye view of the show.

GENERAL INFORMATION

- Public pay telephones are located on Main Street near the Information Booth, and at Main and E. Fifth Streets.
- A first aid station, with an ambulance staffed by emergency medical technicians, is located in the farmhouse at the top of Main Street.
- Lost and found items are kept at the Information Booth.
- Sales, solicitations, and overnight parking, including campers, are prohibited at the Russell E. Larson Agricultural Research Center.
- Disclaimer: Machinery, equipment, products, and services provided are for educational purposes. Their presence does not imply endorsement or recommendation by Penn State.
- Future Dates: Tentative dates for Ag Progress Days 1998 are August 18, 19, and 20.