

# Ag Progress Offers Something For Everyone

(Continued from Page 4)

## SciQ

Test your agricultural IQ in this fun event, patterned after TV quiz shows and hosted by local media celebrities. Contestants and audience members alike can win prizes, including SciQ T-shirts and University Creamery ice cream. The game will be played in the College Exhibits Building Theatre daily at 10:00 and 2:00. Admission is free, but arrive early, since seating is limited

## SciQ Junior

Designed for kids between the ages of 8 and 12, this special version of the popular SciQ game will be played daily at 11:00 and Wednesday at 6:00.

## Storyteller Jan Kinney

Jan Kinney, master storyteller and writer of award-winning short stories, spins her yarns daily at noon in the College Exhibits Building Theatre.

## Video Programs in the Theatre

Video programs will be shown daily. A schedule of running times and video titles is posted in the College Exhibits Building.

## Landscape, Lawn, and Garden Tent

### West 11th Street, next to the College Exhibits Building

Whether you're a homeowner, gardener, or professional grower, Penn State faculty and cooperative extension agents will help solve your plant and insect problems. The tent will feature special displays and information on proper fertilization techniques for the urban landscape. Advice is available on indoor and outdoor plants, turf, flowers, tree fruit, small fruit, and vegetables.

## The Family Room Building

### Main Street, between W. 8th and W. 9th

"Families . . . Our Most Important Resource"—Educational exhibits and presentations focus on raising children, living within an income, and maintaining physical and mental health. Storytelling and other activities for children are scheduled at the Better Kid Care and Family Time section. Families can find information on financial management and credit, and homeowners can get tips on healthier indoor air in this new exhibit area. See demonstrations on healthy eating using the food pyramid, and discover how Penn State has joined forces with other agencies to improve the health and safety of Pennsylvanians. Exhibits feature the Northern Appalachia Leadership Initiative on Cancer; the AgrAbility Project, serving farmers with disabilities; the Pennsylvania Agromedicine Program; Staying Well at Home, a wellness program for the rural elderly; Community Coalitions for Tobacco-Free Youth, Better Kid Care; the Expanded Food and Nutrition Education Program, the Pennsylvania Office of Rural Health; and more



## Family Room Daily Educational Programs:

10:00 a.m.	Eating Right with Milk, Yogurt, and Cheese
10:30 a.m.	Financial News You Can Use
10:45 a.m.	Health and Physical Issues
11:00 a.m.	Eating Right With Vegetables
11:30 a.m.	Matching Goals and Investments
2:00 p.m.	Eating Right with Bread, Cereal, Rice, and Pasta
2:30 p.m.	Shopping Mutual Funds
2:45 p.m.	Health and Physical Issues
3:00 p.m.	Eating Right with Fruit
3:30 p.m.	Reading Financial Pages
3:45 p.m.	Health and Physical Issues
4:00 p.m.	Eating Right with Meat, Poultry, Fish, Dry Beans, Eggs, and Nuts
4:30 p.m.	Working With Financial Advisers
4:45 p.m.	Health and Physical Issues

## Wednesday Only:

5:00 p.m.	Eating Right with the Food Guide Pyramid
5:30 p.m.	Financial Issues
5:45 p.m.	Health and Physical Issues
6:00 p.m.	Eating Right with the Food Guide Pyramid
6:30 p.m.	Financial Issues
6:45 p.m.	Health and Physical Issues

## ImAGination Station

### West 8th Street

Learn what separates the good bugs from the bad bugs. Plant a virtual tree and "see" its growth over the next 20 years on a computer screen. Make your own rain gauge and see how weather affects our food supply. Read all about your visit to ImAGination Station in a personalized newspaper page with a photo of you and your favorite insect. Try not to get jumpy when handling a large grasshopper in the insect

(Turn to Page 8)



# 49th ANNUAL

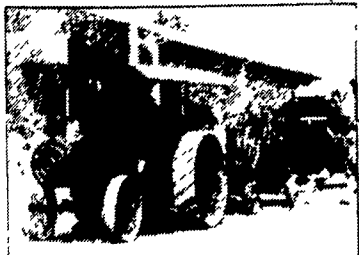
# ROUGH AND TUMBLE ENGINEERS THRESHERMEN'S REUNION AUGUST 13, 14, 15 & 16

R & T, BOX 9, KINZERS, PA 17535

Between Lancaster and Coatesville on Route 30

PHONE (717) 442-4249

THE MOST COMPLETE STEAM AND GAS SHOW  
EAST OF THE MISSISSIPPI



Bus Groups Welcome • Ample Free Parking • "Trolley" Shuttle Service

TIME OF HARVEST: OCTOBER 10 & 11, 1997

## ON DISPLAY AND IN OPERATION

- Steam Traction Engines
- Antique Tractors
- Threshing Machines
- Hit & Miss Gas Engines
- Two Steam Railroads
- Outstanding Display of Large Gas Engines
- Stationary Steam Engine Museum
- Model Steam & Gas Engines
- Large Collection of Early Home Appliances
- Antique Automobiles
- Stationary Balers
- Antique Wagons
- Numerous Craft Displays
- Large Flea Market
- Saw Mill and Shingle Mill
- Much Much more!

1997 FEATURE EXHIBIT  
INTERNATIONAL HARVESTER  
EQUIPMENT  
INTERNATIONAL HARVESTER  
GAS ENGINES

ACTIVITIES START AT 10:00 AM  
EVENING ENTERTAINMENT AND EVENTS  
Starting at 6:30 P.M.

