

N.E. Weekly Shell Egg Report

July 29, 1997

Report Supplied by USDA

PRICES PAID PER DOZEN GRADE "A" BROWN EGGS IN CARTONS DELIVERED TO RETAIL STORES:

	EX. LARGE	LARGE	MEDIUM	SMALL
MAINE	1.25	1.09	.79	.60
NEW HAMPSHIRE	1.18-1.22	1.02-1.06	.72-.76	.53-.57
MOSTLY	1.20-1.21	1.04-1.05	.74-.75	.55-.56
RHODE ISLAND	1.21-1.25	1.05-1.09	.75-.79	.56-.60
MOSTLY	1.21	1.05	.75	.56
VERMONT	1.25-1.28	1.10-1.12	.79-.82	
MOSTLY	1.28	1.12	.82	

Belleville Poultry

Belleville, Pa.

Wednesday, July 30, 1997

Report supplied by Auction

Geese: 1.75-2.50 ea.
 Turkeys: 4.00-11.00 ea.
 Guineas: 2.25-4.00 ea.
 Roosters: 1.00-7.50 ea.
 Bantams: .25-2.00 ea.
 Heavy hens: 2.00-3.50 ea.
 Silkies: 3.25 ea.
 Muscovy hens: none.
 Muscovy drakes: 11.50-13.00.
 Mixed ducks: 3.25-4.50 ea.
 Barn pigeons: 2.25 ea.
 White birds: 3.00-5.00 ea.
 Fancy birds: 3.50 ea.
 Peacocks: 14.00 ea.
 Pheasants: 20.00 ea.
 Doves: 3.50 ea.
 Quail: 1.25-11.00 ea.
 Guinea Pigs: 2.00 ea.
 Rabbits: under 4 lbs. .25-11.00 ea., 4-6 lbs. 2.40-5.00 ea., over 6 lbs. 4.00-14.00 ea.
 For more information phone 717-242-2898.

New York Egg Market

July 30, 1997

Prices were *lower* for extra large and large and unchanged for mediums. The market tone was steady to weak. Demand was fair into retail markets and good into food service. Supplies for jumbo were seasonally tight and other sizes were adequate to ample.

PRICES TO RETAILERS, SALES TO VOLUME BUYERS, USDA GRADE A AND GRADE A, WHITE EGGS IN CARTONS, DELIVERED STORE DOOR, CENTS PER DOZEN. RANGE EXTRA LARGE 88-90 LARGE 85-88 MEDIUM 62-65

Hackettstown Poultry & Egg

Hackettstown, N.J.

Report Supplied by Auction

Tuesday, July 29, 1997

Report Supplied by Auction

HEAVY FOWL .40-1.20.
 LEGHORN FOWL .65.
 MIXED FOWL .30-.60.
 PULLETS EA. 1.50.
 GESE 45-.70.
 BANTAMS .90.
 ROOSTERS .50-1.60.
 BUNNIES EACH .50-2.50.
 DUCKS 1.50-1.90.
 RABBITS .25-1.35.
 PIGEONS EACH 1.50-8.00.
 GUINEAS EACH 7.00-14.00.
 EGGS: WHITE EXTRA LARGE & JUMBO .70-.95, LARGE .82-.90, MEDIUM .54. BROWN EXTRA LARGE & JUMBO .95-.99, LARGE .80-.89.

National Egg Market

July 30, 1997

Prices were unchanged to lower. The market tone was steady on the smaller sizes and weak on larger sizes. Carton egg demand was light to moderate and loose egg demand was good into food service and resort areas. Supplies were seasonally tight for jumbos and adequate to ample for the balance. Breaking stock supplies were at least adequate for the moderate demand and finished product sales were slow. Spent hen supplies were usually adequate for current needs.

NY Phil Frozen Eggs

July 25, 1997

Prices were higher. The market tone was fully steady to firm and had begun to settle by the end of the week. Demand remained irregular, was mostly moderate and centered on less-than-trucklot volumes. Shell egg supplies were tight to adequate with surplus light weight shell eggs routed into breaker channels. Liquid and frozen eggs (ingredients included) processed under federal inspection in the Eastern region for the week ending July 19, 1997 were 9% less than last week, and 8% less than the same week last year. Finished product floor stocks were adequate.

WHOLESALE SELLING PRICES (CENTS PER POUND IN 30 LB. CONTAINERS) TRUCKLOTS LTL (MIN. 25 CONT.) RANGE MOSTLY RANGE WHOLE 56-59 57-58 59-64 BLENDS (I) TFEWR 75-83 WHITES 40-43 41-42 43-53 SUGARED YOLKS (MIN 43% SOLIDS) 80-84 81-82 84-90 SALTED YOLKS (MIN 43% SOLIDS) 75-79 76-77 79-83 (I) - WHOLE PLUS YOLK PLUS SWEETENER, GENERALLY 28-32% EGG SOLIDS.

North Atlantic Shell Eggs

July 31, 1997

Atlanta, Ga.

PRICES WERE UNCHANGED TO LOWER. THE MARKET TONE WAS STEADY TO WEAK. RETAIL DEMAND WAS MIXED, BEST WHERE FEATURED. LOOSE EGG DEMAND WAS GOOD INTO RESORT AREAS. SUPPLIES WERE ADEQUATE TO AMPLE EXCEPT FOR JUMBOS WHICH WERE SEASONALLY TIGHT. BREAKING STOCK SUPPLIES WERE ADEQUATE TO AMPLE. LIGHT TYPE HENS WERE GENERALLY SUFFICIENT.

PHILADELPHIA, PRICES TO RETAILERS, SALES TO VOLUME BUYERS, USDA GRADE A AND GRADE A, WHITE EGGS IN CARTONS, DELIVERED STORE DOOR, CENTS PER DOZEN. EXTRA LARGE .83-.91, LARGE .81-.89, MEDIUM .59-.62.

NE Chicken Pts 1&2

July 30, 1997

Trucklot buying activity was irregular, but showing signs of improvement for the

weekend. Offerings were generally adequate with several dealers holding product with increased confidence. Retail and distributive movement was about moderate with most traders looking for an improved call for the weekend. The market tone was mostly steady.

PRICES PAID PER POUND, ICE PACKED AND CO2 PACKED BROILER/FRYER PARTS, DELIVERED TO FIRST RECEIVERS IN POOL TRUCKLOT AND TRUCKLOT QUANTITIES. ITEM CURRENT NEGOTIATED TRADING* BREAST - B/S (W & W/O TENDERS) 180 BREAST - WITH RIBS 90-91 BREAST - LINE RUN 90 LEGS 42-43 LEG QUARTERS (BULK) 28-29 DRUMSTICKS 45-46 THIGHS 45-46 WINGS (WHOLE) 60-61 BACKS AND NECKS (STRIPPED) 12-14 LIVERS (5 POUND TUBS) 20 GIZZARDS (HEARTS) 40 INCLUDES NEW YORK CITY METROPOLITAN AREA, NORTHERN NEW JERSEY, MASSACHUSETTS, CONNECTICUT, RHODE ISLAND, AND PENNSYLVANIA (NORTHEAST OF HARRISBURG).

E. PA & NJ Poultry

July 28, 1997

Majority prices were unchanged when compared to a week earlier. Demand was moderate to good, although buyers were unaggressive. Offerings were irregular but usually sufficient for trade needs. Undertone was mostly steady.

HEAVY TYPE HENS (7 POUNDS AND UP) * FINAL PRICE, CENTS PER LB., GENERALLY FOR SLAUGHTER THE WEEK OF 28-JUL-97 RANGE MAJORITY WTD AVG AT FARM BUYER LOADING 14-20.5 CENTS/LB. 16-19 17.33 AT FARM PRODUCER LOADING TOO FEW TO REPORT FOB PLANT TOO FEW TO REPORT * WEIGHTS UNDER 7 LBS. SUBJECT TO DISCOUNT.

National Grain Market

ST. JOSEPH, MO

July 30, 1997

Fund selling on the board today pressured wheat bids lower. Corn bids jumped higher due to the warm temperatures over the weekend as traders are con-

cerned yields could lessen. Soybean bids finished sharply lower as profit taking on the board began after two days of higher trends in the bean pits. Lack of new export sales also weighed on soybean bids. Wheat steady to 6 cents lower. Corn 1 to 6 cents higher. Sorghum 2 to 6 cents higher. Soybeans 12 to 43 cents lower. U.S. Export Sales: PURCHASER COMMODITY TONNAGE DEL DATE Nothing new to report. Date Change Year ago Truck Bids: 07/30/97 07/29/97 07/31/96 Wheat: Kansas City (HRW, ORD) 3.70-3.71 dn 2-6 4.90-4.91 Minneapolis (DNS, 14%) 4.23 1/4 dn 2 5.22 Portland (SW) 3.98-4.00 unch-dn 2 4.69-4.72 St. Louis (SRW) 3.47-3.50 dn 1-2 4.41-4.44 Corn, US 2 Yellow: Kansas City 2.69 up 6 4.29 Minneapolis 2.55 1/4 up 3 1/4 4.27 1/4 Southern Iowa 2.62-2.65 up 5-4 4.46-4.50 Omaha 2.51-2.52 up 3-1 4.37-4.40 Soybeans, US 1 Yellow: Kansas City 7.34 dn 38-43 7.63 Minneapolis 7.34 dn 12 1/2 7.42 3/4 Southern Iowa 7.47-7.60 dn 12-4 7.66-7.68 Cent IL Processors 7.29-7.53 dn 22 1/2-24 7.79-7.87 3/4 Futures: Kansas City (Sep) Wheat 3.64 1/2 dn 2 1/2 4.74 Minneapolis (Sep) Wheat 3.86 1/4 dn 2 4.62 Chicago (Sep) Wheat 3.56 1/4 dn 1 3/4 4.40 Chicago (Sep) Corn 2.62 1/4 up 4 1/4 3.54 1/4 Chicago (Nov) Soybeans 6.34 dn 2 1/2 7.33 Export Bids: Barge or rail, Port of New Orleans or North Texas Gulf. US 1 HRW Wheat, Ord. Protein: 3.97 1/2 dn 2 1/2 5. 123 US 2 Soft Red Winter Wheat: 3.68 1/4-3.69 1/4 up 3 1/4-2 1/4 4.60-4.63 US 2 Yellow Corn: 2.84 1/4-2.85 1/4 up 3 1/4-2 1/4 4.79 1/4 US 2 Yellow Sorghum: Rail 4.69 up 6 6.87 Barge 5.19-5.24 up 2-6 7.32 US 1 Yellow Soybeans: 7.81 dn 25 1/2 7.91 3/4-7.92 3/4

Middleburg Hay

Middleburg, PA

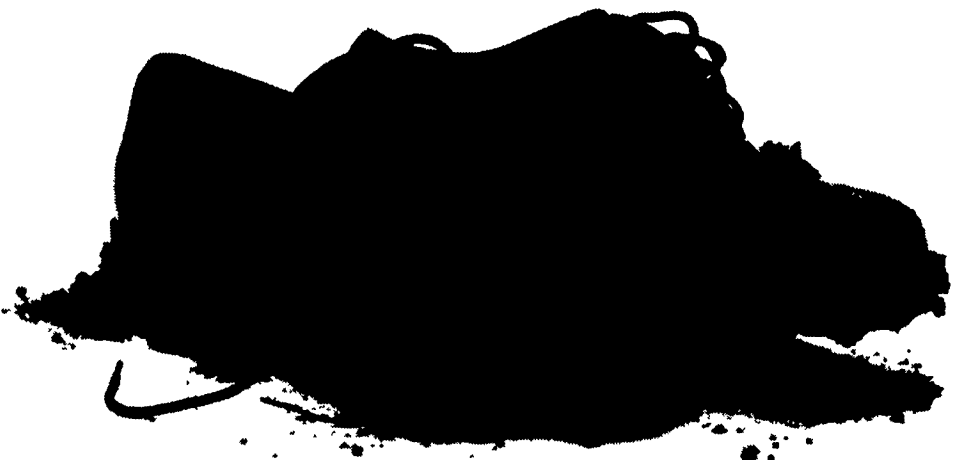
Tues., July 29, 1997

Report supplied by PDA

37 LOADS TOTAL, 14 LOADS OF HAY.

MIXED HAY: 65.00-132.50.
 TIMOTHY: 65.00-110.00.
 STRAW: 80.00-90.00.
 EAR CORN: 87.50-102.50.
 OATS: 1.85 AND 2.90 BU.

Out standing in your field.



The Agri-specialists from Farmers First aren't a bunch of deskbound bankers waiting around for the phone to ring. We get involved with you. Right where you live and work. We lend the money farmers need to keep growing.

And, we can help your business in a lot of other ways, too.

We talk the talk. And we walk the walk. (wherever that might lead us)



ANDY TERRELL
 (717) 626-4735
 EXT. 264

The Agri-specialists

FARMERS FIRST BANK

A SUSQUEHANNA BANC

Member FDIC



JAY HERSHEY
 (717) 768-8256

automatic farm systems
 608 E. Evergreen Road, Lebanon, PA 17042
 Phone: 717-274-5333

See us at PA AG PROGRESS DAYS
 On East 3rd Street and In The Dairy & Livestock Tent #2

HAMMER MILLS for Grinding High Moisture & Dry Grains




Grinds Finer than Roller Mills.

GSI FEED BINS



Expert Installation

ON FARM STORAGE FOR MAXIMUM PROFITS



GSI

- FARM BINS
- GALVANIZED FANS AND HEATERS
- TOP DRY SYSTEMS
- GRAIN DRYERS
- HOPPER BOTTOM TANKS
- COMMERCIAL FLAT BOTTOM
- FLEX-FLO FEED SYSTEMS
- SAFETY ACCESS EQUIPMENT

We Supply Expert Installation and Service
Check Our Prices Before You Buy

CUSTOM MADE AUGERS



Custom made to the length you need.
 Galvanized • Carbon • Stainless



Fighting Available in All Sizes
 Large Stock of Replacement Repairing & Parts
 U-TROUGHS

AUGER INSTALLATIONS

- ✓ In feedlots
- ✓ In drying systems
- ✓ Commercial applications
- ✓ At feedmills or elevators
- ✓ Around poultry & dairy barns
- ✓ At your grain bins or bulk tanks
- ✓ Replacement Augers for feed mixers and farm equipment

Standard Auger Specifications				
Tube Gauge	4"	6"	8"	10"
Flight Thickness	3/16"	3/16"	3/16"	1/4"
Bu./Hr	250	850	2000	3000
RPM	431	431	431	431

Call Us For Custom Specifications