

Vegetable Field Tour

Lancaster Farming, Saturday, July 19, 1997-A25

LANDISVILLE (Lancaster Co.) — The 1997 Pennsylvania Vegetable Field Tour is planned for Tuesday, July 29. The tour is being sponsored by the Pennsylvania Vegetable Growers Association (PVGA).

The tour to Lancaster, Lebanon, and Dauphin counties features visits to two farms and roadside markets, a vegetable processing plant, variety trial gardens and a research center.

The itinerary is as follows:

8 a.m. — Registration at the Penn State Southeast Research and Extension Center in Landisville.

8:30 a.m. — Buses depart Landisville Center.

9 a.m. — Arrive at the Seedway Trial Grounds at the Milton Hershey School in Hershey.

10:45 a.m. — Arrive at the Risser-Marvel Roadside Market and farm in Campbelltown.

11:45 p.m. — Arrive at Frey's Farm Market and farm in Leba-

non. A box lunch will be served here.

2:15 p.m. — Arrive at Funks Farm Market in Millersville.

3:30 p.m. — Return to the Southeast Research and Extension Center in Landisville to tour vegetable research and demonstration plots and equipment demonstrations.

4:30 p.m. Depart for home.

Registration, which will cover the cost of the charter bus, box lunch and refreshments, will be \$25 per person for PVGA members and \$30 for nonmembers. Reservations made after July 22 will have a \$5 late fee added.

If you are interested in attending this tour, call PVGA at (717) 473-8468 (day or evening) to preregister.

Following is a detailed description of the five stops on the tour:

- Seedway Trial Grounds, Hershey. The Trial Grounds of Seedway, formerly Agway Seeds, have

been located on the Hershey School grounds for the last 15 years. The site houses several greenhouses which are used to start vegetable transplants in the spring for transplanting in the field from April through June. Seedway not only trials their own new vegetable varieties but also their competitors' materials. Many of the common vegetable varieties are planted on the five-acre site throughout the growing season. The trial gardens will have in excess of 400 sweet corn varieties in trial in 1997 and tropical marigolds that can grow as tall as 12 feet which can dramatically reduce nematode populations in a single year.

- Risser-Marvel Roadside Market, Campbelltown. This farm and market has been in the family for the last 70 years. Bob Marvel grows a variety of vegetables for his farm market but has significant acreage in sweet corn and cantaloupes. Marvel sells many types of

plastic mulch to the general farm population across the nation and naturally grows many of his vegetables crops on plastic mulch with drip irrigation.

- Frey's Farm Market, Lebanon. Harold Frey began growing vegetables more than 50 years ago and has developed a successful farming operation coupled with an attractive roadside market and greenhouse complex. Frey still dabbles with the flowers in the greenhouse, but his sons Leslie and Dennis run the farming and market operation.

The Freys grow a fair amount of peppers on plastic, early sweet corn on plastic, and cantaloupes. They also have a smaller array of other vegetables to supply their farm market. The relatively large greenhouse is used every spring to start flower and vegetable transplants and produce hanging baskets.

- John Cope's Food Products Inc., Rheems. John Cope Food Products is a food processor that cans and freezes sweet corn, peas,

and lima beans. In the '80s, Copes grew several hundred acres of PennFresh ADX sweet corn to produce high sucrose dehydrated flour that was shipped to Japan. Copes currently contracts with growers from many of the Mid-Atlantic states for their raw product which keeps the factory operating 12 months of the year.

- Southeast Extension and Research Center, Landisville. The Southeast Extension and Research Center is one of several research facilities Penn State maintains around the state to enable researchers to conduct research under the same conditions as major production regions of the state.

Call PVGA at (717) 473-8468 with your reservation by July 22. Mail reservations to PVGA at RR 1 Box 392, Northumberland, PA 17657-9723.

New Dairy

(Continued from Page A1)

Applicants for the award are judged by committees who evaluate the farms' roadside appearance, as well as the cleanliness of the grounds and buildings.

Winners receive official 18x24 "Dairy of Distinction" signs which are mounted at the roadside for all to see. Award-winning farms are also visited annually by the judging committee to ensure that they continue to meet the standards of excellence set by the program.

The 1997 Pennsylvania Dairy of Distinction winners are: District 11: Craig Hayes, Edinboro; Douglas Stanhope, Linesville; and Dennis Rynd, Cochranon.

District 12: Charles Carr, New Alexandria; and Albert Fritz, Valenica.

District 13: Duane Ilgen, Centre Hall.

District 14: Vaughan May, Breezewood; Jerry and Joan Bechtel, Martinsburg; Kurt Walker, Somerset; James Sechler and Bradwin Winters, Somerset; Dennis Brumbaugh, Martinsburg; Mark and Tammy Martin, Berlin; George and David Smith, Martinsburg; Jay and Kirk Hillegass, Berlin; Harry Mosholder, Rockwood; and James and Keith Snyder, Rockwood.

District 15: Roy Coale III., Littlestown.

District 16: Lloyd Zimmerman, Danville.

District 17: Paul G. Robbins, Ulster.

District 18: Joseph Pavelski, Susquehanna.

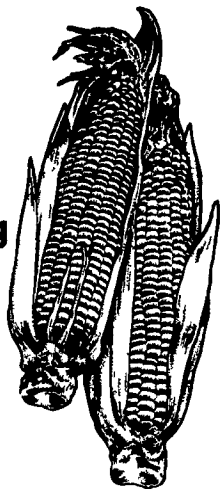
District 19: Lamar Gockley, Mohnton.

District 20: William and Karen Boyd, Mertztown; Michael Dietrich, Kutztown; Peter Markel, Breinigsville; and Melvin Stoltzfus, Cochranville.

MOLDY CORN?

Let Schnupp's Grain Roasting **SAVE** Your Moldy Corn!

- Flame Roasting Kills the Molds Present In Corn.
- Flame Roasting Will Reduce Toxins To Safe Levels
- Flame Roasting Will Remove Odor and Increase Palatability.



Let Schnupp's show you how flame roasting can save you money. Call Schnupp's today and ask for a price on roasting your corn.

ROAST-A-MATIC GRAIN ROASTING
Sales-Service Roast-Cool Unit Available Custom Work

SCHNUPP'S GRAIN ROASTING

RD6, LEBANON, PA

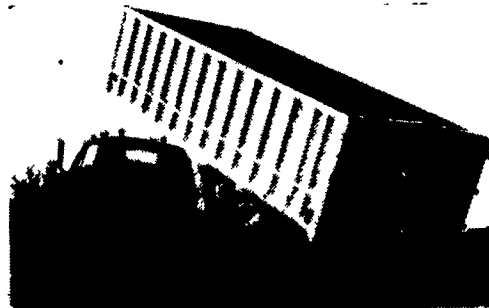
1-800-452-4004

(717) 865-6611

ALUMINUM GRAIN BODIES & ALUMINUM REPAIRS by



Rugged Strength



Dependable Performance

These ultra-light bodies are designed for strength through engineering, not strength with bulk. For example, a 16' grain body with tailgate and 48" sides weighs only 1490 lbs. complete. We'll build you any length or any side height up to 60".

Also available:

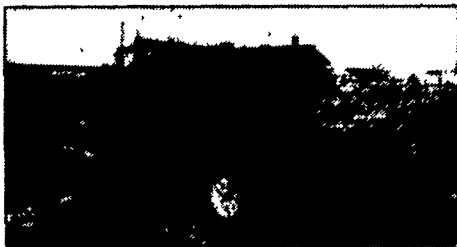
- Double swinging hay hauling tailgate
- Barn door type tailgate
- Slide out cattle chutes
- Diamond flooring
- Pull out panel tailgates
- Any size grain chute

HEWEY WELDING

Box 2312, RD4 Lebanon, PA 17042 (717)867-5222

HEAVY DUTY HOOF TRIMMING TABLES

Endorsed by the International Hoof Trimming School of Wisconsin



- 2 10-inch lift belts
- 3500 lb. axle with or without brakes

- 12-year building experience in the tables design
- 2"x2" tube frame chute
- chute measures 75"x28"x75" high
- 4" casters for cradle fold-up
- Two hydraulic cylinders for extra stability
- tool box for D.C. pump and battery protection
- manure grate to keep work area clean



- fold away side gate
- removable head board
- 45 min. video from International Hoof Trimming School of Canada

Delivery Available

THREE MODELS TO CHOOSE

1. PORTABLE 2. STATIONARY 3. 3 POINT HITCH

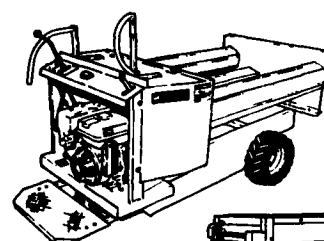
BERKELMAN'S WELDING

RR 7, AYLMEER, ONTARIO, CANADA N5H 2R6

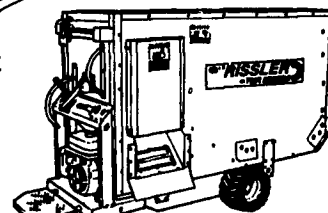
(519) 765-4230

I.H. RISSLER™ MIXERS & FEEDERS

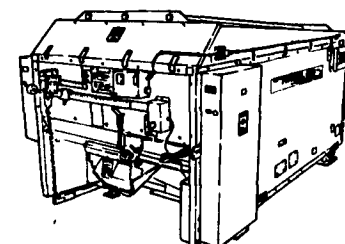
WE CAN SUPPLY A MIXER OR FEEDER FOR MOST OF YOUR SPECIFIC NEEDS



ROUND BALE FEEDERS



MIXING CARTS



STATIONARY MIXERS

- PROVEN RUGGED
- PROVEN EFFICIENT
- PROVEN ECONOMICAL

JUST PLAIN PROVEN!

I.H. RISSLER MFG. COMPANY

448 Orchard Road

Mohnton, PA 19540 Phone: 717-484-0551

