

# QUALITY HAY EQUIPMENT

## TO PRESERVE YOUR QUALITY HAY CROPS

### 10 REASONS YOU SHOULD CONSIDER ROUND BALE SILAGE!

1. High quality forage.
2. Harvest when crop is ready.
3. Reduces reliance on drying time.
4. Lower field losses.
5. Different grades of hay can be kept separate.
6. Low capital investment compared to conventional method.
7. Low horsepower and fuel requirement.
8. Possibility of extra cut, earlier and later in the season.
9. Bales can be sold as cash crop.
10. Better herd health with long stem fiber.



TANCO... The Wrapper That Wraps Bales Other's Won't

Talk with a farmer who's doing it, he'll no doubt give you more reasons!



### 10 REASONS WHY YOU SHOULD BUY A

**TANCO BALE WRAPPER**

**TO DO IT!**

1. Five (5) points of support on turntable: Four heavy duty rollers add stability and support to the perimeter of the turntable in addition to the main central shaft. This allows Tanco wrappers to safely wrap the heaviest silage bales on rough or uneven ground.
2. Single solid belt on turntable: The single belt enables Tanco wrappers to effectively wrap misshapen or soggy bales providing a positive surface for bale rotation.
3. Adjustable extendable axle: On trailed models the extendable axle provides a wide, stable wheel base when loading bales. Eliminates the need for counterweights.
4. Top rollers on turntable: Extra rollers

5. Unloading ramp on trailed models: The ramp allows bales to be unloaded gently. When a wrapped bale falls hard it can "burp". Once it "burps" the bale does not re-seal. The ramp gives a smooth transition between the ground and turntable.
6. Optional "High Rise" axle kit for soft ground conditions.
7. Models available to fit every individual need, including machines to wrap big square bales. Tanco was first to build a large square bale wrapper, & continues to produce advancements in bale wrapping technology.
8. Positive bale positioning: While being wrapped, bales are rotated the exact

distance required to obtain optimum coverage.

9. **Durability:** Tanco's subframe is one of the heaviest of any machines available in North America. The low profile design keeps silage bales closer to the ground with a low center of gravity for stability. Tanco's features are the result of years of experience and input from hundreds of individual, and commercial users.
10. **Price:** From a basic 3 point Model AW250, to the trailed Model AW550 with automatic cut & start, bale and batch counter, and tractor seat controls, Tanco prices are very competitive. Pay less for more features and durability than any other bale wrapper on the market.



### SILAGE BALING

Firm, well shaped bales of uniform size are easiest to wrap and store. Due to the nature of high moisture hay, the baler must be designed for the task. Although most conventional round balers will make silage bales, premature structural failure, plugging, and inconsistent bale

density should be expected after a relatively short time. Optimum bale size is 4'x4'. Larger bales can be wrapped, but due to the extra weight, have a tendency to sag which increases the risk of splitting plastic film. Larger bales also require heavier equipment to handle bales when ready to feed. Both "hard center" and "soft center" balers will work, but the "rope" in the middle of "hard center bales, encourages mold and can result in wasted feed.

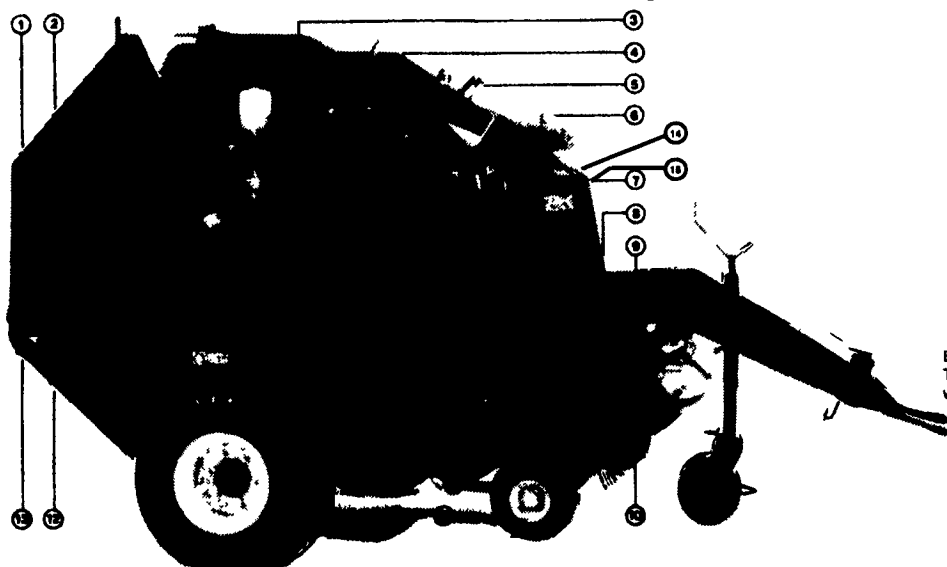
A properly prepared 4'x4' silage bale can weigh from 1400# - 1600#. Due to weight and pressure required to exclude as much air as possible, the bale chamber must be designed with extra strength. A heavy duty drive system, constant density control, and reliable pick-up mechanism are also required.

Balers equipped with a built in cutting mechanism are able to increase bale density by up to 20%, and prechopped material can be easily fed.

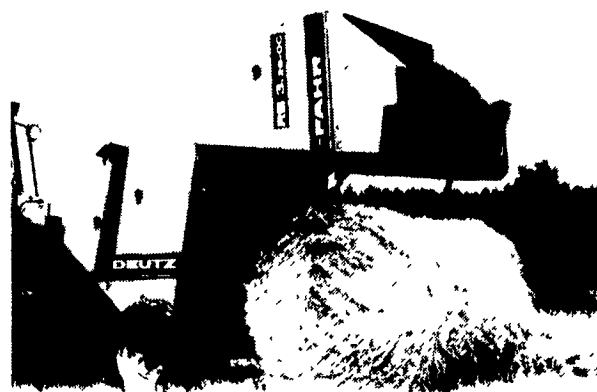
Be sure to use untreated sisal, plastic or nylon twine if you intend to wrap high moisture bales. Treated Sisal twine produces a chemical reaction that will burn through plastic film.

Special features on DEUTZ-FAHR round balers are why they are able to produce consistent bales year after year of use.

1. Roller bearings mounted on the outside of the bale chamber.
2. Automatic chain lubrication system.
3. Reinforced bale chamber for extra strength.
4. Closely spaced small diameter rollers.
5. Automatic "TWIN-FIX" twine tying system.
6. Netwrap option with a capacity of 270 bales per roll.
7. Easily accessible twine box holding (4) twine balls.
8. Universal drawbar with 16 positions and swivel wheel jack.
9. Adjustable baffle plate.
10. Hydraulic lift pickup.
11. Pneumatic tire pickup gauge wheels.
12. Mechanical tailgate lock.
13. Six bale density settings.
14. Splined drive shafts.
15. Extra heavy drive chain.



17 Thick walled ribbed steel rollers produce consistent results. Smaller diameter rollers reduce wedging and leaf loss is kept to a minimum. Splined shafts are used on all drive rollers for maximum efficient power transfer.



Equipped with optional WIDE PICK-UP, OPTI-CUT pre-cutting mechanism, combination TWINE and NET WRAP, the DEUTZ-FAHR RB3200 OC is the ideal machine for custom work

All these features translate into outstanding performance and long life.

FOR MORE INFORMATION AND YOUR NEAREST DEALER:



**CUMMINGS and BRICKER INC.**

Wholesale Distributors

100 Stover Drive  
Carlisle, PA 17013  
717/249-6720

100-120 Lehigh Ave. • P.O. Box 928  
Batavia, New York 14021-0928  
716/343-5411

"Serving Farmers Through Farm Equipment Dealers Since 1961"

