

35 TRUCKS & TRAILERS

19', 15 ton tri-axle trailer w/boogies and electric brakes, asking \$2695. 717-345-4882.

1983 Ford fire truck, gas engine, 750 GPM, 750 gallon tank, good mechanical condition, new radial tires, asking \$3000. 717-273-6309 717-865-3348 evenings

1966 Ford F600 flat bed dump 3614V, 5/2, grain sides, excellent condition, \$4,000. (301)824-7477.

1967 Mack R model, 33,000 GVW, 707 gas engine, duplex, very clean, \$5,500. (610)594-6790.

1969 Chevy flat bed truck, 396, V8, 5/2 speed, air brakes, \$3500. 717-389-1473

1969 R Model Mack tractor, runs good, inspected. Best offer. Must sell! Please call 717-393-5807 ask for Jeff Brenner

1969 White T/A tractor 270 Cummins, Jake brake, excellent condition, \$6,000 OBO. Call (908)454-6089.

1971 IH Cargo Star dump truck, GVW 21,000#, farm tags, asking \$2250. 717-436-9798

1972 Chevy C50 Dump Truck, good condition, \$4500 OBO. 717/528-8831.

1973 Chevy C-65 366 V8 5+2, PS, 11' steel stake dump, 16T 3-stage cylinders, good 10:00:20's, minor repairs, \$2500. 410/877-7015.

1975 1 1/2 ton Ford F600, C&C, 2-speed rear, garage kept, \$2800. 610-459-2210 5pm-10pm

1977 Chevy C-30 truck, steel flatbed and racks, good cond, \$1500. (717)366-8703

1977 Kenworth OLD CLASSIC 'A' model W900, 400 CAT Jake brake, 13 speed, w/or without wet-line, new paint. A real beauty and in good condition. (717)865-4534.

1978 Ford 800, Lewisville cab, 20' body w/sides, 5+2, \$4,800. Ask for Bill, (410)335-0998.

1979 Ford 1-ton dump truck, rebuilt box, new paint, excellent condition, \$4600. 717-389-1473

1986 REO GIANT Cummins 400, 13 speed, 80,000 GVW, tandem axle, 500,000 miles, A/C, P/S, good running condition, \$12,500. M-F, 8-5, (717)264-6181.

1987 Ford Cargo 7000, 24' box van w/hyd. lift, very good condition, \$15,000 OBO; Storage trailers- 2 pup trailers \$450/each OBO; 1972 Diamond Rio cab & chassis, 555 Cummins engine, 9-spd Road Ranger, less than 10,000 miles, \$10,000 OBO; '58 Chevy cab & chassis, 327 engine, 2-spd rear, \$1000 OBO; 1970 GMC dump truck, elect. hyd. pump, snowplow hookup, 365 engine, 5+2-spd rear, new paint, very good rubber, \$5000 OBO. 717/566-8872.

1987 Ford F-350 4X4, crew-cab, XLT, Lariat TowPkg, class 3hitch, a/c, AT, detroit locker-in-rear limited slipin front 87,000mi., \$11,000/obo. (717)733-6575

1989 Isuzu NTR stake body dump truck, 115K, low profile, auto, P/S, P/B, stereo, turbo diesel, new brakes, batteries, pump, & turbo, \$11,500 OBO. (302)455-1802.

1990 Ford F250, 4x4, Lariat, LO hubs, V8, 5.8L, automatic, loaded w/ extras, red & silver, very good condition, \$8900. 717-967-1201

1992 Ford F250, 4x4, ext. cab, 460, V8, automatic, fully equipped-trailer package, good, 39K, \$14,900. 814-267-4100

NOTICE FOR SALE BY SEALED BID

with snow plow and cinder spreader. 44,366 miles. A1 except needs clutch.

Can be seen 150 S. Pine Grove St., Fredericksburg, PA.

Call 717-865-4005 or 717-865-4304.

Bids accepted until 3:30 p.m. August 14th. Twp. has the right to reject any or all bids.

1993 ALUMATECH 39 ft. air ride, 11R24.5 alum budds, new brakes, 50% tires, must go, new dump ordered
\$27,500 OBO
717/627-0295

R-Model, MACK 350, 9 speed, 38 Rears, Weld Built Wrecker,
\$10,500 or best offer
(610) 485-5174

'76 Clark feed tanker trailer
(8 bins), blower, auger feeds airlock. Trailer reconstructed, works good. Must sell since local employing mill closed. Blower unit from truck available.
Montour Co.
717-437-2212

88/89 FORD BRONCO II
3 in stock

89 - 19' Wellcraft Classic 192
3.7 Liter 4 cyl., 165 HP, Stern drive, Merc Cruise
\$6,990

93 FORD EXPLORER XLT 4X4.....\$11,900
88 CHEVY SILVERADO 350 V-8.....\$2,990
88 FORD BRONCO II.....\$4,990
88 CHEVY 1500, AUTO, V-8.....\$3,990

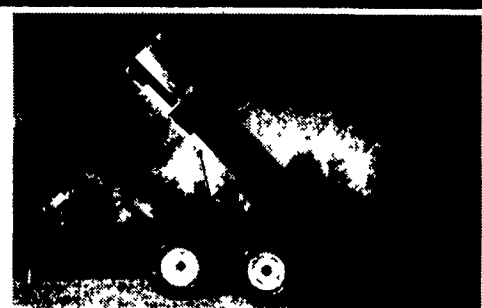
MILLERS' IMPORTED CAR SERVICE
Route 16 North, Dillsburg, PA
717-432-3064

USED TRUCKS



'96 Chevy 3500 4x4 6.5 Turbo, diesel, auto overdrive, PS, PB, A/C, AM&FM stereo, 410 Limited slip rear, 29,000 mi Red
\$21,900

MARTIN'S AUTO SALES
1025 W. Main St.
New Holland, PA 17557
(717) 656-6621



6-TON DUMP TRAILERS
Direct from Manufacturer

- 10 ft. x 7 ft. • Floating Tandem Axle
- 3 ft. Front, 3 ft. Tailgate & Grain Chute
- 16 in. Extendable Sides
- 10 ga. Floor & Sides
- 11Lx15 Flotation Tires
- 2-Way 4 in. x 24 in. Hydraulic Cylinder includes hoses

Price \$3,200 FREE Delivery To Northeast USA
Phone (519) 765-4230
Fax 519-765-4507



1993 GMC Crew Cab
4x4, 6.5 Turbo, 5 spd., PW, PDL, Air, TLT, CC, 2/98 Insp., 204,000 mi.
Asking **\$9,900**
(Rack not included)
(717) 354-2613
New Holland



1994 Isuzu NPR 3.9 Turbo Diesel, Auto, A/C, 15' Van Pull Out Ramp - 88,000 Miles - \$13,900



1985 F-700 14 ft. Van w/Liftgate, 21,500 GVW Very Clean, Garage Kept - \$6,900



1989 Chev - 9600 GVW - 350 Auto, 8 ft. Reefer Body with CB1 Thermo King Unit \$8,500



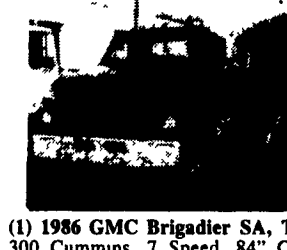
16' to 20' Reefer Bodies \$900 & Up Also STORAGE BODIES

Martin's Used Trucks & Equipment Inc.

560 Lampeter Rd. Lancaster, Pennsylvania 17602
(717) 299-6200 (717) 392-6266



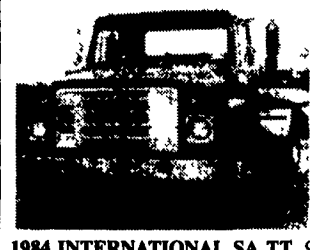
1980 MACK R686ST, 300 Maxi, 6 Speed, 38 Mack Rears, PS, 20" Spokes, New Paint \$8,900



(1) 1986 GMC Brigadier SA, TT, 300 Cummins, 7 Speed, 84" CA, Great Dump Chassis, NEW SHEPARD POWER STEERING, New Paint, Great Buys \$8,500



1979 FORD F700 w/22' Van Body, 370 V4, 5 Speed, 22.5 Radials on Budds, 23,000 GVW \$4,900



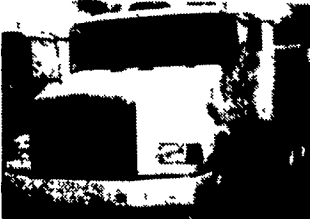
1984 INTERNATIONAL SA TT, 9 Litre Diesel, 5 Speed, 22.5 Radials on Alum, Budds, Air Brakes, New Paint, Very Nice \$5,900



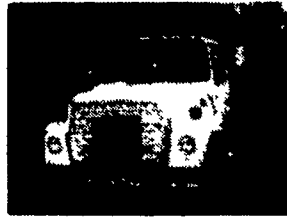
1979 INTERNATIONAL S1854 w/650 Holmes, DT466, RT610, 22.5 Radials, PS, 25 750 GVW, New Paint, Good Value \$8,900



1974 MACK U600, SA, TT, 237 Maxi, 5 speed, 23,000 Rear, 20" Spokes, Good Runner \$3,500



(3) 1990 VOLVO WHITE TT, WIA64T, F350 BCIV, Cummins, RT12609, RT40-145 Rockwells on Air Ride, Air Ride Cab, PS, AC, Starting At \$15,900



1979 FORD LN7000 Cab & Chassis, 3208 CAT, 5 Speed, 2 Speed, PS, New Paint, Road Ready \$5,900



1989 FORD L9000 tt, NTC350 (No miles on Rebuild) 9 Spd, 40M Rears, 22.5 Radials on Spokes, PS, Very Nice \$16,900



1985 GMC ASTRO TT, 300 Cummins, 9 Speed, 40M Rears, PS, Runs Well \$4,900



1987 INTERNATIONAL 9370 TT, 315 BC Cummins, 9 Speed, SQ100 Rears, 3.55 Ratio, 22.5 Radials on Budds, PS, Sleeper, Nice \$14,900



1988 FREIGHTLINER TT 300 Cummins, RT11609A SQ100 Rears on 4 Spring, 24.5 Radials on Budds PS, Good Value \$8,900

FIRESTONE MOTORS, INC.

330 S. THIRD ST. • LEMOYNE, PA 17043 • (717) 763-7721 • TOLL FREE 1-888-668-6778