

Pa. Grain

June 30, 1997

Report supplied by PDA
 COMPARED WITH LAST MONDAY'S MARKET FOR EASTERN AND CENTRAL PENNSYLVANIA: CORN .05 TO .25 LOWER, WHEAT & BARLEY STEADY TO .10 LOWER, OATS STEADY TO .20 LOWER, SOYBEANS MOSTLY .30 TO .40 LOWER, BAR CORN STEADY TO 5.00 LOWER. PRICES PAID DELIVERED TO DELIVERS DOCK: ALL PRICES PER BUSHEL, EXCEPT BAR CORN PER TON.

SOUTHEASTERN PENNSYLVANIA
 CORN NO. 2-Y RANGE 2.76-3.13, AVERAGE 2.91, CONTRACT FOR HARVEST 2.34-2.56; WHEAT NO. 2 RANGE 3.11-3.26, FEW REPORTED 3.55, AVERAGE 3.28, CONTRACT FOR HARVEST 3.11-3.41; BARLEY NO. 3 RANGE 1.90-2.10, AVERAGE 1.99; OATS NO. 2 RANGE 1.90-2.20, FEW REPORTED 1.60, AVERAGE 1.94, CONTRACT FOR HARVEST FEW REPORTED 2.00; SOYBEANS RANGE 7.67-8.00, AVERAGE 7.81, CONTRACT FOR HARVEST 6.07-6.47; FEW REPORTED GRAIN SORGHUM 2 RANGE 2.60, AVERAGE 2.60, CONTRACT FOR HARVEST 2.24; BAR CORN RANGE 74.00-84.00, FEW REPORTED 100.00, AVERAGE 84.25.

SOUTH CENTRAL PENNSYLVANIA
 CORN NO. 2-Y RANGE 2.70-2.90, FEW REPORTED 3.10, AVERAGE 2.85; WHEAT NO. 2 3.10-3.44, AVERAGE 3.24; BARLEY NO. 3 RANGE 1.85-2.25, AVERAGE 1.97; OATS NO. 2 RANGE 1.60-2.25, AVERAGE 1.83; SOYBEANS NO. 1 RANGE 7.67-8.00, AVERAGE 7.81; BAR CORN RANGE 80.00-85.00, FEW REPORTED 70.00, AVERAGE 80.29.

EASTERN AND CENTRAL PENNSYLVANIA SUMMARY
 CORN NO. 2-Y RANGE 2.70-3.00, AVERAGE 2.86; WHEAT NO. 2 RANGE 3.10-3.50, AVERAGE 3.30; BARLEY NO. 3 RANGE 1.85-2.10, AVERAGE 1.97; OATS NO. 2 RANGE 1.60-2.20, AVERAGE 1.90; SOYBEANS NO. 1 RANGE 7.50-8.00, AVERAGE 7.74; BAR CORN RANGE 74.00-85.00, AVERAGE 81.77.

WESTERN PENNSYLVANIA
 CORN NO. 2-Y RANGE 2.75-3.10, FEW REPORTED 2.40, AVERAGE 2.92; WHEAT NO. 2 RANGE 2.96-3.45, AVERAGE 3.19; BARLEY NO. 3

RANGE FEW REPORTED 1.75, AVERAGE 1.75; OATS NO. 2 RANGE 2.00-2.35, FEW REPORTED 1.75, AVERAGE 2.20; SOYBEANS NO. 1 RANGE 7.74-7.79, AVERAGE 7.77.

CENTRAL PENNSYLVANIA
 CORN NO. 2-Y RANGE 2.70-3.00, AVERAGE 2.87; WHEAT NO. 2 RANGE 3.30-3.50, AVERAGE 3.37; BARLEY NO. 3 RANGE 1.70-2.10, AVERAGE 1.90; OATS NO. 2 RANGE 1.75-2.25, AVERAGE 1.96; SOYBEANS RANGE 7.75-8.10, AVERAGE 7.79; BAR CORN RANGE 70.00-85.00, FEW REPORTED 100.00, AVERAGE 82.20.

MONTH AGO
 CORN NO. 2-Y 3.12; WHEAT NO. 2 3.71; BARLEY NO. 3 2.78; OATS NO. 2 2.16; SOYBEANS NO. 1 8.55; BAR CORN 86.50.

YEAR AGO
 CORN NO. 2-Y 5.43; WHEAT NO. 2 4.62; BARLEY NO. 3 3.08; OATS NO. 2 2.53; SOYBEANS NO. 1 7.49; BAR CORN 148.81.

Greencastle Livestock

Greencastle, Pa.
 June 30, 1997

CATTLE 547...PDA...SUPPLY INCLUDED 110 SLAUGHTER STEERS AND HEIFERS, 260 SLAUGHTER COWS, 33 BULLS AND 144 FEEDER CATTLE. COMPARED WITH LAST MONDAY'S SALE...SLAUGHTER STEERS UNEVEN, MOSTLY STEADY, COWS STEADY TO STRONG, BULLS 1.00-2.00 HIGHER.

SLAUGHTER STEERS: HIGH CHOICE AND PRIME 1250-1355 LBS. 65.75-68.25, CHOICE 1115-1290 LBS. 61.25-65.25, FEW 1300-1350 LBS. 61.00-62.00, SELECT 55.75-62.00, COUPLE STANDARD 48.50 AND 49.50.

HOLSTEINS: FEW CHOICE 1285-1540 LBS. 57.75-58.25, SELECT 51.00-54.50, STANDARD 44.75-49.75. HEIFERS: HIGH CHOICE AND PRIME 1070-1325 LBS. 64.50-67.25, CHOICE 1020-1355 LBS. 61.00-65.25, SELECT 54.75-62.25, STANDARD 43.00-50.50.

COWS: BREAKING UTILITY AND COMMERCIAL 41.50-47.75, CUTTER AND BONING UTILITY 39.00-46.25, CANNER AND LOW CUTTER 29.50-39.75. SHELLS DOWN TO 19.50.

BULLOCKS: COUPLE SELECT 55.75 AND 56.00.

BULLS: YG#1 1095-1945 LBS. 48.00-57.00, ONE AT 59.25, FEW #2 1045-1315 LBS. 43.50-47.00.

FEEDER CATTLE: STEERS LARGE FRAME #2 510-875 LBS. HOLSTEINS 48.00-60.00, MEDIUM AND LARGE FRAME #2 380-645 LBS. 58.00-75.00, FEW 490-1010 LBS. 58.50-64.00; HEIFERS MEDIUM AND LARGE FRAME #2 200-380 LBS. 51.00-76.00, 400-840 LBS. 58.00-70.00; BULLS FEW LARGE FRAME #1 715-930 LBS. 56.00-62.50, MEDIUM AND LARGE FRAME #2 200-595 LBS. 58.00-69.00, COUPLE TO 79.00.

CALVES: 531...VEALERS FEW GOOD 130-165 LBS. 45.00-58.00, STANDARD AND GOOD 75-100 LBS. 19.00-26.00, UTILITY 65-75 LBS. 10.00-19.00.

FARM CALVES: HOLSTEIN BULLS UNEVEN, SPOTS 10.00 LOWER, WEIGHTS OVER 110 LBS. SHOWING THE MOST STRENGTH...#1 HOLSTEIN BULLS 90-125 LBS. 67.50-122.00 WITH A FEW DOWN TO 60.00, 110-125 LBS. 100.00-122.00, #2 85-125 LBS. 25.00-55.00; #1 HOLSTEIN HEIFERS 85-110 LBS. 85.00-112.50, WITH ONE AT 140.00; #2 65-85 LBS. 32.00-55.00.

BEEF X BULLS AND HEIFERS 85-95 LBS. 37.00-70.00, FEW 100-130 LBS. 110.00 AND 118.00.

HOGS: 31...SOWS US#1-3 330-460 LBS. 38.50-47.00, 500-645 LBS. 46.00-48.50.

BOARS: ONE 300 LBS. AT 41.00. FEEDER PIGS 0... NO MARKET TEST.

SHEEP: 183...SLAUGHTER LAMBS CHOICE 35-75 LBS. 90.00-110.00, 90-130 LBS. 71.00-93.00, GOOD AND CHOICE 40-55 LBS. 82.50-87.50. SLAUGHTER SHEEP 26.00-42.00, FEW YEARLINGS 37.00-52.50.

GOATS: 213...BY THE HEAD, LARGE BILLIES 70.00-122.50, MEDIUM 52.50-65.00, TWO AT 70.00, LARGE NANNIES 57.50-75.00, MEDIUM 41.00-59.00, FEW TO 65.00, LARGE KIDS 31.00-44.00, SMALL 18.00-28.00 PER HEAD.

Carlisle Livestock

Carlisle, Pa.
 July 1, 1997

SLAUGHTER CATTLE: STEERS, HOLSTEINS CHOICE 55.25-61.00; SELECT AND LOW CHOICE 50.50-55.00.

COWS: STRONG DEMAND! BREAKING UTILITY AND COMMERCIAL 40.25-50.50; CUTTER AND BONING UTILITY 38.00-46.75; CANNER AND LOW CUTTER 34.00-37.75; BIG MIDDLE 37.75-40.00; SHELLY 33.00 AND DOWN.

FEEDER CATTLE: FEEDER STEERS MEDIUM AND LARGE #1 200-800 LBS. 63.00-105.00; HOLSTEINS/DAIRY TYPES 47.00-55.00; FEEDER HEIFERS HOLSTEINS/DAIRY TYPES, ALL WEIGHTS, 35.00-52.00.

CALVES: VEALERS STANDARD AND GOOD 15.00-35.00; CALVES RETURNING TO THE FARM, HOLSTEIN BULLS #1 95-140 LBS. 50.00-107.00; HOLSTEIN HEIFERS #1 95-125 LBS. 110.00-124.00; 80-90 LBS. 67.50-105.00.

SWINE: HOGS US#1-3 ACTIVE! 220-270 LBS. 59.00-59.75; US#2-3 220-270 LBS. 57.75-58.75; SOWS US#1-3 300-600 LBS. 41.00-47.50; THIN/WEAK/ROUGH TO 40.00; BOARS 36.25-37.50; FEEDER PIGS, ACTIVE! BY THE HEAD, 30-45 LBS. 30.00-46.00; 45-50 LBS. 42.00-50.00; BY THE LB., AS IS 100-160 LBS. 50.00-56.00.

GOATS: BY THE HEAD, MED. TO LARGE NANNIES AND BILLIES 50.00-100.00; FLESHY KIDS 42.50-57.50; SMALL/THIN KIDS 25.00-40.00.

LAMBS: GOOD AND CHOICE 60-110 LBS. 80.00-100.00, 110-150 LBS. 69.00-78.00.

SALE EVERY TUES. 5 P.M. FOR RABBITS, POULTRY AND EGGS; 6:30 P.M. FOR LIVESTOCK, STARTING WITH CALVES.

EARLYBIRD PENS FOR CATTLE, COWS AND HOGS CLOSE EVERY TUES. AT 2 P.M. FOR PREMIUM PRICES, USE THESE PENS.

NEXT SPECIAL FEEDER CATTLE SALE TUES., JULY 15. SALE TIME APPROX. 7:30 P.M.

NEXT SPECIAL FED CATTLE SALE TUES., JULY 8 AND TUES., JULY 22. PEN LOTS OF CATTLE WILL BE SOLD

IN ORDER RECEIVED. NEXT STATE GRADED FEEDER PIG SALE FRIDAY, JULY 11. RECEIVING 7-11 A.M. SALE TIME 1:30 P.M.

New Wilmington Livestock

NEW WILMINGTON, PA
 JUNE 30, 1997

CATTLE 104 [PDA] Compared with last week's sale cows steady 3 00 higher

SLAUGHTER STEERS one Choice 1245 lbs @ 64 00

COWS Breaking Utility and Commercial 40 00-45.50, Cutter and Boning Utility 34 75-43 00, few Canner and Low Cutter 27 00-35 75 Shells down to 22 25

BULLS Yield Grade No 1 1450/2185 lbs 46.75-54 50, few No 2 980/1390 lbs 39 75-44 25

FEEDER CATTLE: STEERS: Medium Frame No 1 455/790 lbs 62 50-69 00, HEIFERS: few Medium Frame No 1 & 2 250/600 lbs 50 00-60 00, few Large Frame No 2 275/600 lbs 40 00-44 00; BULLS: few Medium Frame No 1 & 2 225/625 lbs 46 00-66 00

CALVES 181 VEALERS few Choice 180/305 lbs 89 00-96 00, few Good 160/195 lbs 62 50-70 00, Standard and Good 70/115 lbs 25 00-30 00, Utility 60/75 lbs 12 50-22 50

FARM CALVES. No 1 Holstein bulls 120/130 lbs 57 50-70 00, 90/115 lbs 75 00-95 00, No 2 90/115 lbs 35 00-72 50, couple No 1 Holstein heifers 95 & 105 lbs 125 00 & 127 50, few No 2 75/115 lbs 27 50-60 00 Beef cross bulls and heifers 85/110 lbs 30 00-85 00

HOGS 172 Barrows and gilts steady to 1 00 higher

BARROWS AND GILTS US 1-2 210/270 lbs 60 00-64 00, few 65 00, US 1-3 220/290 lbs 60 00-60 50

SOWS US 1-3 320/745 lbs 42 00-48 00

BOARS few 230/720 lbs 38 00-42 00

FEEDER PIGS 24 NO MARKET TEST!

SHEEP 177 SLAUGHTER LAMBS High Choice and Prime 50/95 lbs 85 00-91 00, Choice 50/115 lbs 67 00-84 00, Good and Choice 30/60 lbs 45 00-65 00

SLAUGHTER SHEEP. 18 00-53 00 mostly 20 00-26 00

GOATS 4 Few Medium & Large 44 00-65 00 — per head

Pennfield

BAGGED FEEDS

#82025P
 18% Rabbit
 Breeder Pellets
 25 LB. BAG

\$4.23

**TWO NEW LOCATIONS
 IN LANCASTER COUNTY**

HENRY B. HOOVER, INC.

1731 W. Main St.

Ephrata, PA

(717) 733-6593

STORE HOURS: 7:30 AM - 8 PM M-F

7:30 AM - 4 PM SAT

▶▶ DELIVERY AVAILABLE ◀◀

E.M. HERR FARM & HOME STORE

Rt. 272 South

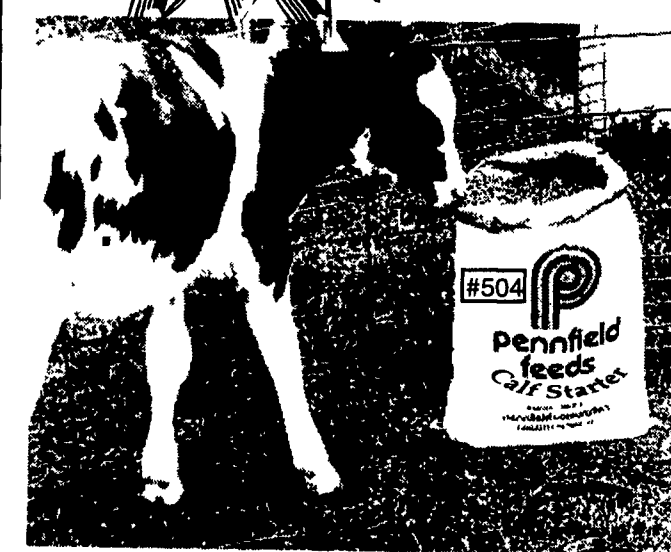
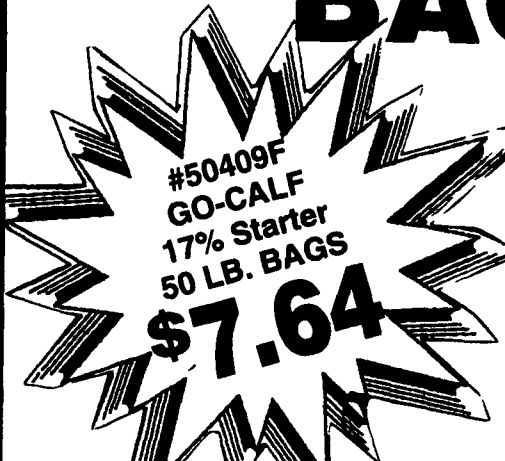
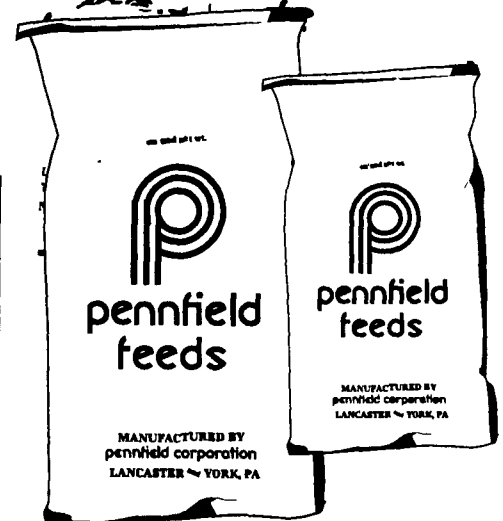
Willow Street, PA

(717) 464-3321

STORE HOURS: 6:30 AM - 8 PM M-F

7:30 AM - 6 PM SAT

PRICES ARE FOR WEEK OF 7/07/97



#504 Go-Calf Starter Flakes

OPEN 6 DAYS PER WEEK FOR YOUR CONVENIENCE