

1984 GMC Tilt Master, 29,760 GVW, 180" cab to axle, 73,000 miles, needs minor work, \$2800. 717-776-7725

1986 GMC 5000, 350 V8, Allison automatic, 12' Durallite body, 1500lb power gate, 71,000 miles, 8R19.5 low profile tires, \$5500. 614/942-3821.

1986 REO GIANT Cummins 400, 13 speed, 80,000 GVW, tandem axle, 500,000 miles, A/C, P/S, good running condition, \$12,500. M-F, 8-5, (717)264-6181.

1987 F-800 Ford 429 hyd. brake, 10' dump, new 10' power Monroe plow, 60K miles. \$8500. (717) 897-7523 (908)362-8022

1987 Ford Cargo 7000, 24' box van w/hyd. lift, very good condition, \$15,000 OBO; Storage trailers- 2 pup trailers \$450/each OBO; 1972 Diamond Rio cab & chassis, 555 Cummins engine, 9-spd Road Ranger, less than 10,000 miles, \$10,000 OBO; '58 Chevy cab & chassis, 327 engine, 2-spd rear, \$1000 OBO; 1970 GMC dump truck, elect. hyd. pump, snowplow hookup, 365 engine, 5+2-spd rear, new paint, very good rubber, \$5000 OBO. 717/566-8672.

1989 Isuzu NTR stake body dump truck, 115K, low profile, auto, P/S, P/B, stereo, turbo diesel, new brakes, batteries, pump, & turbo, \$11,500 OBO. (302)455-1802.

1991 Barrett trailer 8x24 Jack rail in 15,000 GVW, also deck boards and ramp available. Also 36" sit down KW W900 bumb w/new rubber seal. Call anytime, will return, (610)562-5124.

1992 Ford F250, 4x4, ext. cab, 460, V8, automatic, fully equipped trailer package, good, 33K, \$14,900. 814-267-4100

1992 ProLite horse trailer w/ living quarters, shower, commode, 4-horse slant, mud & tack rooms, excellent condition. Must see! \$22,000 neg. OBO. 610/689-5914.

1993 Landoll 32' roll back gooseneck trailer, tandem axle, winch, 28,000 GVW, nice. \$23,500 new, selling \$11,500. 717-733-3720

1996 GMC 2500, 4x4, extended cab, Vortec 350 V-8 engine, matching cap, 15,000 miles, asking \$23,500. (717)445-0478.

1997 F350 XL 4x4 crew cab, power stroke diesel, 5 speed, 1 owner, 24K, like new, \$27,000 firm. (814)236-3302 or fax (814)236-3503.

24' Gooseneck Flatbed Triaxle Trailer, \$1800. 201/875-4506.

Load Boss Trailers



Specializing in Dumps & Roll-Off Container Trailers. Buy From The Manufacturer And Save \$. We Build To Suit Your Working Needs! Call us at **814/623-8696** or **814/623-9696** **SUMMER SALES ON NOW!**

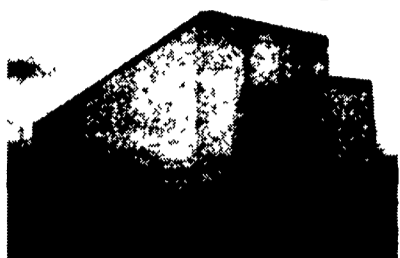
Great Dane Trailers

Built Better To Last Longer ★★★★★ Quality Is Our Product

800-433-0381

Manheim Pike, Lancaster, PA

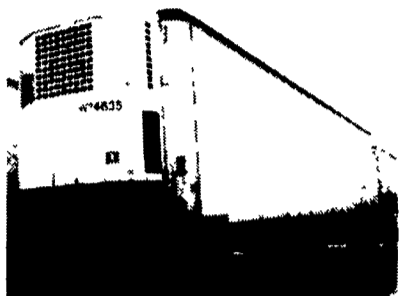
Get Ready for the Harvest!!



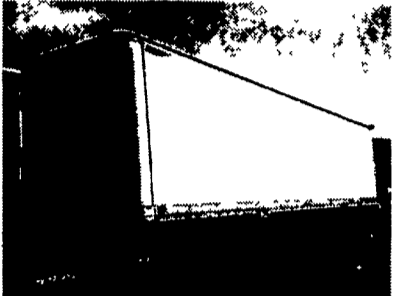
Misc. Storage Reefer without units 45 thru 48' Insulated Prices beginning at \$1,800



4-6 Misc. Storage Reefers with units 45' and 46'6" Reefers with TK sentury units. Prices beginning at \$3,800



1985 Utility 48'x96"x13'6" Reefer TK SBI Sliding tandem on 24.5 Disc. Kenlite lined Also have 86 Great Dane 46'x6" with Carrier Good Road Trk.



20 1985 Great Dane 45'x96"x13'6" Dry Vans 24.5 LP Disc Sliders 1 Row of E Track Swing Doors. Ready to work. Priced to go!



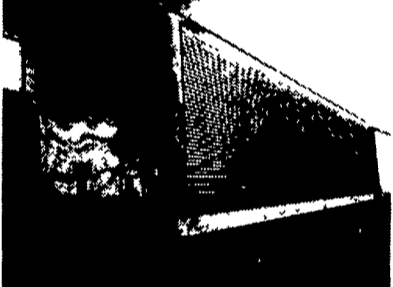
Haul Heavy 42'x96" Great Dane 16" Post centers 24" Flat steel scuffer 11:00 22.5 Disc. Not a Dent on the skin. Won't Last Long. Call Today!



1988 Fruehauf Flatbeds 45'x96" on 22.5 Spoke Sliders 48" Plastic covered side kit. Also have 94 Great Dane 45'x102" with side kit.



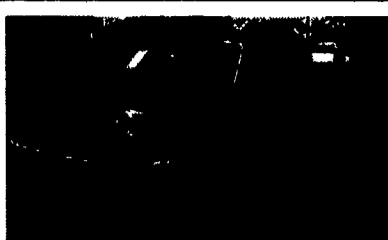
45'x96" FRP Van with overhead Door on 10:00 20 Tries. Trailer will pass inspection. Ready for the highway at \$2,750



1986 Great Dane Stainless Steel Dry Van 48'x102"x13'6" 24.5 LP Disc Sliders, Alum. Budds.

Contact Al Burrows (717) 764-0220 Or Lancaster, PA Branch (717) 397-8277 Or Western PA (412) 458-4299 For More Information & Availability

35 TRUCKS & TRAILERS



1996 FORD F250 SUPER CAB 4X4 Big Block 460, 5-speed, 24,000 miles only \$22,999



1996 FORD E350 15-PASSENGER CLUB WAGON XLT, 351-V8, PW, PL, Crusie, Dual A/C, AT, 24,000 Miles, #3799A was \$21,995 NOW \$20,995

LEBANON 20th & CUMBERLAND STS - RT 422 WEST

"Revvin' to take care of ALL your trailer needs."



HAS BUILT A REPUTATION



United Expressline 8x16 Cargo Moritz International CBR-16 EBY Aluminum 7x20 Gooseneck

NEW & USED: STOCK - HORSE - CARGO - INDUSTRIAL - UTILITY - CAR HAULERS

Trailer Enterprises is here to serve you. We are a full service facility providing YOU with the very best service available in the industry!

TRAILER ENTERPRISES, INC. 13121 MAUGANSVILLE ROAD HAGERSTOWN, MD 21740

Just give us a call at (301) 791-5343.

Hours: 8AM-5PM Monday-Friday 9AM-12 Noon - Saturday

EBY USED EQUIPMENT

BODIES

- (3) 10' Eby Cattle Bodies
- (1) 8' Pick-Up Cattle Rack Topper
- (1) 12' Eby Cattle Bodies
- (1) 16' Wooden Cattle Body

GOOSENECK

- 1995 Eby 22'x8'x8 Double Deck Trailer
- 1996 Eby 28'x8'x8'
- 1992 Featherlite 4 Horse Slant Load
- 1985 Tracer 6 Horse Slant Load
- 1982 Featherlite 4 Horse Head to Head
- 1978 Eby 22'x8'x6"6"
- 1988 Featherlite 22'x8'x6"6"

M.H. Eby, Inc.

1194 Main Street (Route 23) Blue Ball, PA 17506 (717) 354-4971 (800) 292-4752 FAX (717) 355-2114 4435 State Route 29 West Jefferson, OH 43162 (614) 879-6901 (800) 752-0507 FAX (614) 879-6904

IN ALUMINUM BODIES EBY BUILDS IT

M.H. Eby custom-builds aluminum truck bodies for the agri-transportation market. Nobody offers more sizes and options in:

- FLATBED BODIES - Lengths to 32', choice of 5 widths.
- GRAIN BODIES - Lengths to 24', landscape and general purpose dumps to 12'.
- LANDSCAPE BODIES - Lengths to 12', We'll build to your specs!

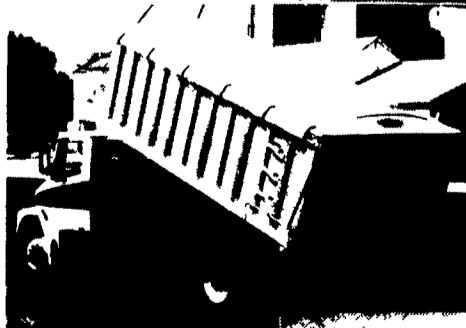
For greater payload capacity, Eby's aluminum design is equal in strength to steel and up to 40% lighter. Our corrosion-resistant components never need painting. That means minimum maintenance, improved appearance and higher resale value.

Eby products have superior standard features. And we offer customer options for virtually any application. Agriculture is your business - building bodies to haul it is ours.



1194 Main Street Blue Ball, PA 17506

800-292-4752



Let EBY custom build one for you.

