

Salesmen:
 Alvin Martin
 Bob Lentz
 Dave Wenger

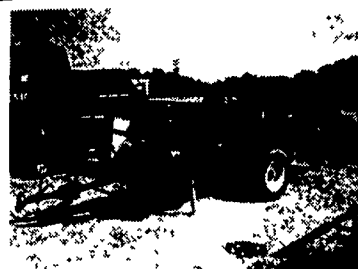
WENGLERS OF MYERSTOWN FARM MACHINERY



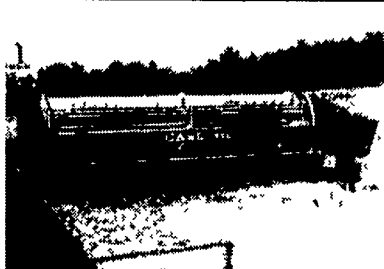
814 S. COLLEGE ST. (ROUTE 501)

(717) 866-2135

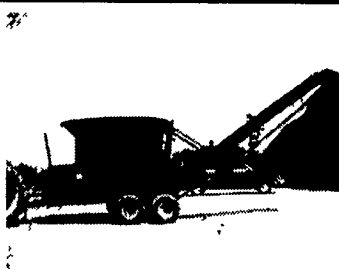
MYERSTOWN, PA 17067



International 435 Baler, very sharp, no thrower, great value



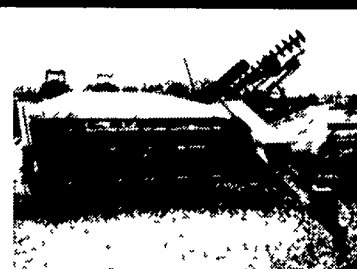
Case 550 9' Mower Haybine, Good Cond.



Farmhand 7000 CG tub grinder, very good cond.



ARPS 90 3 pt. backhoe attachment, nice



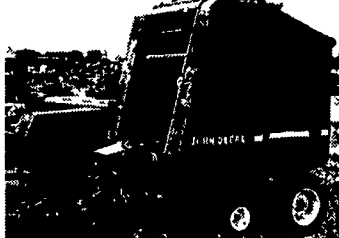
John Deere 1219 9' haybine



John Deere 3950 harvester, w/5/8" hay head



John Deere 1210A 400 Bushel grain cart, good condition, has a light kit. also 3) others in stock



John Deere 385 round baler, looks like new!



International 82 pull type PTO drive combine good cond.



John Deere 410 round baler, very nice

TRACTORS

- JD 7200 MFWD, ROPS, Power Quad
- JD 2940 MFWD, canopy
- JD 4240, cab, powershift
- JD 4430, year round cab
- JD 2755 Cab, Low Hours, Yellow w/Side Mt. Tiger Mower
- JD 2640 Hi-Lo, 80 Model, Nice
- JD 2520 D, WF, 2R
- JD 2240 w/145 ldr. very nice
- JD 1010 gas, try, cultivator
- JD 2640 w/loader
- JD 1010 Gas, Power Steering
- JD 650 Compact 4WD w/5' Mower
- '95 CIH 7220 MFWD under 500 Hrs.
- IH 1086 Cab, Weights, Nice
- IH 1066, red cab
- IH 666 Diesel, Hydro, Weights
- IH 656D hydro w/2250 ldr.
- Case IH 235 compact
- Case IH 265 offset, hi-clear
- Case 4890 4WD 250 HP, 3 pt., PTO
- Case 430 LCK gas, Turf Tires, Nice
- Oliver 1600 Diesel
- Oliver 1555 Gas, WF, Nice
- Ford 6610 II Canopy, Low Hours
- Ford 2910 II w/Loader
- Ford 1710 hi-clear offset
- Versatile 145 4WD Articulates, 3 pt.
- MF 1080 Diesel Multi-Power, Canopy
- Farmall 560 gas, fh, WF
- Farmall Super H
- Farmall A w/cult.

ROW CROP CULTIVATORS

- 2) White 378 4R danish (sharp)
- 2) JD FM 8RW front mount
- JD RM 4RN C-spring
- JD RG4 4RN spring shank
- MF 4RW spring shank
- Glencoe 4RW C-spring
- IH 183 4RN danish
- Extra Set of rolling shields
- Noble cultivator units

ROLLER HARROWS AND PACKERS

- Brillion 14' crowsfoot w/trans. (sharp)
- Brillion 12' crowsfoot w/trans. (sharp)
- Brillion 8' 3 pt. packer (sharp)
- Brillion 10' cultumulcher
- JD 950 10' cultumulcher
- Dunham 10' cultumulcher

SPECIALTY ITEMS

- Bearcat 1101 Grinder/Mixer (Sharp)
- Artsway 450 Grinder/Mixer w/Scale
- JD 400 grain cart (sharp)
- 3) JD 1210A grain carts, 400 Bushel
- JD 68 Feed Cart w/Auger Unload
- Ag-Tech 805 Preseeder (Sharp)
- 2) Feeder Wagon 1 w/head lox
- ARPS 3 Pt. Backhoe Attachment
- Case IH 600 forage blower
- NI 56" forage blower.

CHISEL PLOWS & FIELD CULTIVATORS

- JD 714 7T soil saver (sharp)
- JD 712 9T soil saver (sharp)
- Brillion 3T 3 pt. soil saver
- IH 5500 7T 3 pt. chisel
- MF 12 T 3 pt chisel
- Bush Hog 3 pt. chisel
- Taylor Way 5T 3 pt chisel
- Kewanee 7-11T 3 pt. chisel
- IH 4500 13' wing fold field cult.
- 2) IH 45 18' pull field cultivator
- JD 740 12' danish field cultivator

DISC HARROWS

- JD 230 20' wing fold, sharp
- JD 230 22' wingfold, black gang
- Krause 1591 15' center fold
- Wilbeck 8' offset (nice)
- Krause 11' offset
- Krause 12' rock flex disk
- Hutchmaster 10' offset (nice)
- Case IH 350 8' trans. disk (sharp)
- Kewanee 11' transport disk
- Pittsburg 9' transport disk
- IH 10' transport disk
- 4) IH drag disks

BALERS AND HAYBINES

- Ford NH 492 9' haybine (sharp)
- 2) NH 488 9' haybines (nice)
- FNH 489 9' haybine
- JD 1219 9' Mo/Co
- NH 477 7' haybine
- Case 550 9' haybine
- JD 410 round baler (sharp)
- JD 385 4x5 round baler (sharp)
- 2) JD 327 baler w/ejector (nice)
- CIH 8540 centerline baler
- JD 24T w/ejector
- IH 435 w/chute, sharp

COMBINES AND HEADS

- 1977 JD 4400 diesel, cab, air, 23.1x26 (sharp)
- JD 443 4RN corn head
- JD 643 6RN oil bath
- JD 244 2RW head
- JD 213 flex head
- JD 215 flex head

HAY EQUIPMENT

- FHN 157 3 pt. tedder, 2 star
- NH 163 4 star tedder
- FNH 254 3 pt. rake/tedder
- NH 258 rake w/dolly
- NH 256 rake
- NH 56 hay rake
- JD 660 rake w/dolly
- Gehl 452 hyd. w/dolly (sharp)
- Deutz KS85 rotary rake
- 2) Pequea 710 hay tedder
- Ag Wrap 5x4 3 pt. bale wrapper
- Ag Wrap loader mt. bale hugger
- IMCO 3 pt. bale mover
- Buffalo Valley 32' elevator
- 4) Steel and wood hay wagons

SICKLE BAR MOWERS

- Case IH 3205 3 pt. disc mower
- JD 350 9' 3 pt. sickle
- 2) Case IH 1300 9' 3 pt. sickle (sharp)
- Ford 515 7' 3 pt. sickle
- MF 41 7' 3 pt sickle
- IH 100 5' semi-mount sickle
- JD #8 7' semi-mount sickle
- Triumph hyd. side mount sickle
- Farmall Cub sickle

COMBINE CORN HEADS

- JD 643 6RN oil bath
- JD 443 4RN
- JD 244 2RW - \$950
- AC A330 3RN - \$450
- AC G430 4RN - \$600
- AC CII 430 4RN - \$600
- AC LM 430 4RN - \$600
- 4) AC E240 2RW - \$300 each.
- AC KL 238 2RW - \$300
- 2) Oliver 704N 4RN - \$600
- Oliver 703N 3RN - \$450
- Oliver 702W 2RW - \$300
- IH 833 3RN - \$450

ROTARY MOWERS

- Rhino 20' batwing mower 1000 PTO (due in)
- Woods 3180 15' batwing
- Woods 2126 10 1/2' Mower
- 2) Woods Cadet 7' 3 pt.
- Woods Cadet 6' 3 pt.
- Woods Cadet, 6' pull
- Woods RD7200 6' estate
- King Kutter 4' thru 6', 3 pt & pull
- Woods RM 550 & 660, 5' & 6' estate
- Woods belly mowers for Cub & A
- JD 25A 7' 3 pt. flail mower
- 2 Ford flail mowers (due in)
- Sepee 8' 3 pt. flail mower
- Mott 5' 3 pt. flail mower

MISCELLANEOUS

- Brillion 12' stalk shredder
- (3) Belt 16' Alum. Elevator
- (4) Gravity Bin Wagons
- Horst 10T and 12 T Wagon Gears
- 2) Danuser post hole diggers
- EZ Flow & JD 10' lime drill
- Maschio 44" roto-tillers, 3 pt.
- JD rototiller
- Howard 3pt Rotovator 72"
- Oliver 2 R Potato Digger
- JD 1R PTO, Potato Digger
- 3) JD 16A flail choppers
- NI 212 w/top beater (sharp)
- New Idea 17 ground drive spreader
- 18.4x42 Open Center Duals
- 20.8x38 Open Center Duals
- 18.4x38 Open Center Duals
- 16.9x38 Open Center Duals (due in)
- Used Plow Colters
- Mechanical 2R 3 pt. Transplanter
- 2) 1 Shank 3 pt. Sub Soilers
- Woodsman 30" 3 pt. PTO Woodsaw
- JD 9' front blade
- DION & GEHL forage wagons
- 2) Corn drag elevator

HARVESTERS

- JD 3950 w/hay head
- NH 718 w/2RN head
- more heads in stock

IF YOU DON'T SEE IT LISTED, CALL US, WE MAY HAVE IT!