

Nittany Lion Fall Classic Set Again

STATE COLLEGE (Centre Co.) — The Penn State Dairy Science Club and the Pennsylvania Holstein Association will team up to sponsor the 14th annual Nittany Lion Fall Classic consignment sale on Saturday, November 15. In addition to a strong Holstein line up, this year's sale will again include 12-15 high quality Jerseys. The Pennsylvania Jersey Cattle Club is also supporting the sale.

Last year's sale averaged \$1,513 on 66 Holsteins. The 14 Jerseys in last year's sale averaged \$1,271. This year's sale committee is looking forward to the 1997 Fall Classic Sale. The sale managers and selection committee will be visiting Holstein and Jersey breeders in the next few months to select cattle.

The goal of this year's sale is to select about 65 top quality springing Holstein heifers and young Holstein cows. A select group of pedigreed calves will be sold. The club plans to select 12 to 15 top pedigreed Jersey cows, heifers, and calves.

The 1997 Nittany Lion Fall Classic sale committee members are:

Overall Chair, Meranda Dum, Landisburg, PA; Assistant Chair, Chris Connelly, Pennsylvania Furnace, PA.

Selections chairs, Terri Snook, Lafayette, NJ; Cory Meyers, St. Thomas, PA, Lisa Stuchal, Slippery Rock, PA.

Jersey selections chair, Cory Meyers, St. Thomas, PA.

Marketing/Merchandising, Publicity, Advertising, Jen Cree, Newport, PA, Jen Davis, Leesport, PA.

Finance, Mike Kowalewski, Forest City, PA, Mark Mosemann, Warfordsburg, PA.

Reception, Christina Petersson, Douglas, MA, Barbie Berrang, Valencia, PA.

Arena Preparation, Rod Hissong, Mercersburg, PA, Jeff Balmer, Lititz, PA.



1997 Nittany Lion Fall Classic Chairs and Committees are, from left, front, Chris Connelly, and Meranda Dum. Row 1, Lisa Stuchal, Jen Davis, Lauren Lynch, Heather Oberholtzer, Mike Kowalewski, Barbie Berrang, Cory Mey-

ers, Liza Haas, Justin Howes, and Dave Fava. Row 2, Bill Mosholder, Jeff Balmer, Ken Gesford, Rod Hissong, Jason Wolfe, Terri Snook, and Pam McConnell.

Barn Managers, Dave Fava, Bentleyville, PA, Justin Howes, Elizabethtown, PA.

Animal Preparation, Matt Lawrence, New Castle; Diane Glock, Mifflin, PA.

Other Club members on the Selection Committee: Ken Gesford, Montrose, PA; Dave Fava,

Bentleyville, PA; Diane Glock, Mifflin, PA; Pam McConnell, Volant, PA; William Mosholder, Rockwood, PA; Justin Howes, Elizabethtown, PA; Heather Oberholtzer, Elizabethtown, PA; Lauren Lynch, Friedens, PA; Liza Haas, Millerstown, PA.

Dairy Science Club members

use the Fall Classic as an excellent "hands-on" educational experience. The sale provides first hand experience in selecting, merchandising and managing dairy cattle. Last year over 50 club members were involved in the sale.

If you are interested in consigning, call Ken Raney at the PHA

office (814) 234-0364; Meranda Dum at (717) 789-3701, or Chris Connelly at (814) 234-3396, or the Department of Dairy and Animal Science at Penn State and ask for Larry Muller (814-863-4205) or Dale Olver (814-863-3914). Jersey breeders should contact Cory Meyers at (717) 369-4693.

1997 CHAMPIONSHIP SHOW SCHEDULE

PA Holstein Championship Show

Date: September 23, 1997
Time: 9:00 a.m.
Place: Farm Show Complex, Harrisburg
Entry Fee: \$20.00
Late Entry Fee: \$30.00
Entry Deadline: August 25, 1997
Judge: Robert Fitzsimmons
Check-in Deadline: September 21, 1997
Send Entries To: PA All-American Dairy Show
Farm Show Complex
2301 N. Cameron Street
Harrisburg, PA 17110

Northwest PA Championship Show

Date: August 1, 1997
Time: 9:30 a.m.
Place: Stoneboro Fairgrounds, Stoneboro
Entry Fee: \$7.00
Late Entry Fee: \$10.00
Entry Deadline: July 14, 1997
Judge: James Burdette
Chairman: Rodney Sealand 412-662-4970
Check-in Deadline: July 31, 1997, 5:00 p.m.
Send Entries To: Rodney Sealand
276 Clintonville Road
Mercer, PA 16137

Southwest PA Championship Show

Date: July 26, 1997
Time: 10:00 a.m.
Place: Fayette County Fairgrounds, Uniontown
Entry Fee: \$6.00
Late Entry Fee: \$10.00
Entry Deadline: July 17, 1997
Judge: Chris Hill
Chairman: Rick Allen 412-677-2589
Check-in Deadline: July 25, 1997
Send Entries To: Rick Allen
RD 1 Box 191-B
Smock, PA 15480

Southeast PA Championship Show

Date: August 20, 1997
Time: 10:00 a.m.
Place: Schuylkill County Fairgrounds
Entry Fee: \$8.00
Late Entry Fee: \$15.00
Substitution Fee: \$10.00
Entry Deadline: August 8, 1997
Judge: Steve Shaw
Chairman: Duane Stoltzfus 610-286-5060
Check-in Deadline: August 19, 1997
Send Entries To: Duane Stoltzfus
RD 1 Box 67
Morgantown, PA 19543

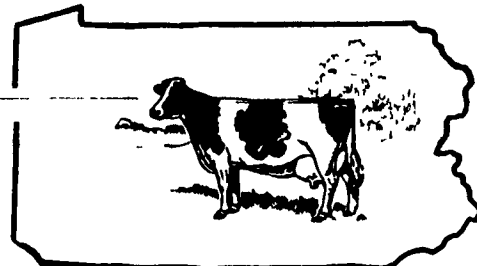
South-Central PA Championship Show

Date: August 9, 1997
Time: 9:30 a.m.
Place: Shippensburg Fairgrounds, Shippensburg
Entry Fee: \$5.00
Late Entry Fee: \$15.00
Entry Deadline: July 26, 1997
Judge: John Burket
Chairman: Creedin Cornman 717-258-3859
Check-in Deadline: August 8, 1997, 4:00 p.m.
Send Entries To: Creedin Cornman
600 Forge Road
Carlisle, PA 17013

Northern Tier PA Championship Show

Date: August 14, 1997
Time: 10:00 a.m.
Place: Wyoming County Fairgrounds, Meshoppen
Entry Fee: \$6.00
Late Entry Fee: \$10.00
Entry Deadline: July 28, 1997
Judge: Chris Hill
Chairman: Roger Sherwood 717-833-2354
Check-in Deadline: August 6, 1997, 5:00 p.m.
Send Entries to: David Castrogiovanni
RD 1 Box 365
Montrose, PA 18801

Pennsylvania Holstein Association



Northeast PA Championship Show

Date: August 19, 1997
Time: 9:30 a.m.
Place: Tioga County Fairgrounds, Whitneyville
Entry Fee: \$7.00
Late Entry Fee: \$10.00
Entry Deadline: August 11, 1997
Judge: Steve Wood
Chairperson: Brenda Hodder 717-662-2555
Check-in Deadline: August 18, 1997, 6:00 p.m.
Send Entries To: Brenda Hodder
3368 Kellytown Road
Mansfield, PA 16933

Central PA Championship Show

Date: August 16, 1997
Time: 6:00 p.m.
Place: Huntingdon Fairgrounds, Huntingdon
Entry Fee: \$5.00
Late Entry Fee: \$10.00
Entry Deadline: August 4, 1997
Judge: Curtis Day
Chairman: John Foster, Jr. 814-667-3567
Check-in Deadline: August 15, 1997, 6:00 p.m.
Send Entries To: John Foster, Jr.
RD 1 Box 110
Petersburg, PA 16669