

'95 Chevy 3500 HD tree truck, automatic, 14 cu yd chip body, hoist and side boxes, AmFm, 3K, excellent truck, like new, \$27,000. (215)357-2548.

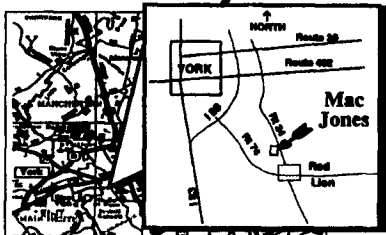
For Sale: 1977 Int. 1800 Loadstar, Midwest dump, 345 gas, new paint, new tires, new insp. 610/562-8940 leave message.

Late 1970 Mercedes 16' stake body w/dump and straps for round bales. 610-469-9633

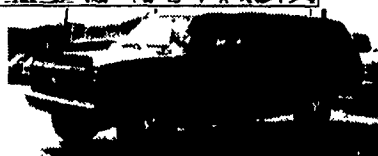
Frehauf dump trailer, 24' aluminum, good condition, \$2500. 215-442-0680

**Ford** **MAC JONES FORD, INC.**  
3250 Cape Horn Road, P.O. Box 250, Red Lion, PA 17356  
717-244-7677 1-800-522-5824  
Over 200 New & Used Inventory

**TRUCK SPECIALS**



**NEW 97 Ford F250 Crew Cab**  
4x4, XLT, Diesel, PW, PL Auto



**1988 Chevy Suburban**  
350 V8, Auto, AC, Two Tone Blue, Stock #9312A **\$7,995**



**1991 Ford F250 2WD**  
Blue, Auto, V8, Custom **\$8,995**



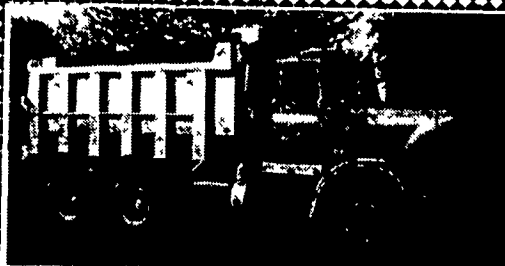
**New Ford's - 6 To Choose From**  
Dumps, Stake Bodies, Crew Cabs, 4x4's, Diesel



**1994 Ford F250 Super Cab 4x4**  
Black & Silver, XLT **\$19,995**



**1987 Ford F250 w/Plow**  
Auto, V8, Was \$8,900 Lancaster Farming Special **\$8,450**



**1981 Diamond Reo**  
Glider tandem dump, 13' aluminum bed, 350 Cummins, 13 speed, 38,000 Hendrickson suspension, 10/20 tires

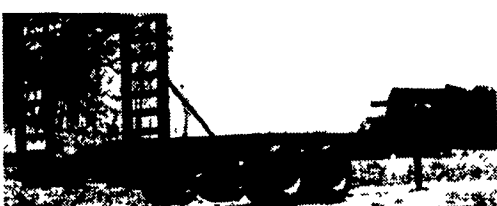
**\$16,000**  
717-437-2640

**APPALACHIAN MANUFACTURING, INC.**  
330-222-2468

**We Special Build For Any Need!**

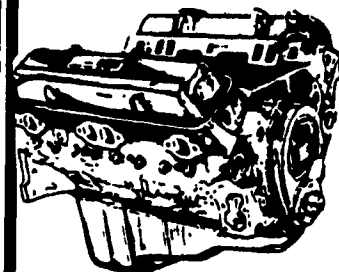


**10K Dual Tandem Trailers**  
Oil Bath Axle - Spring Assist Ramps  
Pintle Pull, 18x5, Dovetail..... **\$4,750<sup>00</sup>**  
Gooseneck, 20x5..... **\$5,000<sup>00</sup>**



**CALL US FOR ANY OF YOUR TRAILER NEEDS!**

**JONES**  
Goodwrench **ENGINE HEADQUARTERS**



**GM GOODWRENCH**  
350 V8 1973-85  
Part Number 10067353  
New Engine - Not Rebuilt  
36 Month or 50,000 Mile Warranty

New Engine - No Core Fee **\$1199<sup>00</sup>**

**WE'LL MATCH ANY COMPETITOR'S PRICE!**

**6.5L GOODWRENCH DIESELS**  
From **\$3,100**

Call 394-0711 for prices on other New or Remanufactured Goodwrench Engines. 2.5 Liter thru 454 cid. Gas and Diesel

Chevrolet - Pontiac - Olds - Buick - Cadillac - GMC

**JONES GM PARTS CENTER**

1335 Manheim Pike, Lancaster, PA 17604  
Easily Located on Rt. 72 Just off of Rts. 283 & 30  
Hours: Mon-Fri 7:30 a.m. - 9 p.m. Sat 7:30-3  
(717) 394-0711



Largest Stocking & Selling Extended Cab GMC Dealer in 7 States

**JONES BEST BUY 4X4'S TRUCKS**

**JONES**  
**PONTIAC • HONDA**  
**GMC TRUCK**  
1335 Manheim Pike, Lancaster  
717-394-0711  
Prices based on straight sale, Tax & Tags extra. Trades accepted at actual cash value. Must present this ad at time of purchase for sale price.

 <b>'93 CHEV ASTRO ALL WHEEL DRIVE</b> AT, AC, V6, 8 Pass. #7345 Was \$13,300 <b>SALE \$10,845</b>	 <b>'87 GMC SUBURBAN</b> SLE, AT, AC, V8, Clean #7390 Was \$8,700 <b>SALE \$6,430</b>	 <b>'89 MITSUBISHI 4x4</b> 5 Spd., 4 Cyl., Clean #7354 Was \$6,900 <b>SALE \$5,150</b>	 <b>'95 CHEV 3/4 X CAB 4x4</b> 5 Spd., Silverado, 350, AC, 8600 GVW Was \$23,100 <b>SALE \$21,230</b>	 <b>NEW '97 GMC K25 X CAB 4x4</b> AT, SLE, 6.5 Turbo, 6' Bed #17627 Was \$31,482 <b>SALE \$29,227</b>
 <b>'95 GMC K15 4x4</b> AT, AC, SLE, 4.3 Vortec #7339 Was \$19,735 <b>SALE \$17,183</b>	 <b>'93 DODGE GRAND CARAVAN LE</b> AT, AC, V6, 7 Pass #7371 Was \$13,400 <b>SALE \$10,700</b>	 <b>'91 CHEV K15 4x4</b> Sportside, AT, AC, V8, Silverado #7368 Was \$13,900 <b>SALE \$11,700</b>	 <b>'95 CHEV BEAUVILLE VAN</b> AT, AC, 6.5 Turbo #7364 Was \$19,931 <b>SALE \$18,100</b>	 <b>NEW '97 GMC K30 4x4 DUMP</b> AT, 6.5 Turbo, 8' Body #17517 Was \$33,191 <b>SALE \$29,171</b>
 <b>'92 CHEV K BLAZER 4x4</b> AT, AC, V8, Silverado #7404 Was \$18,750 <b>SALE \$16,100</b>	 <b>'94 GMC SUBURBAN 4x4</b> AT, AC, V8, SLE #7366 Was \$19,700 <b>SALE \$17,850</b>	 <b>'92 GMC SUBURBAN 4x4</b> AT, AC, V8, SLE #7360 Was \$17,480 <b>SALE \$15,900</b>	 <b>'93 CHEV S10 BLAZER 4x4</b> V6, AT, AC, 4 Dr. #7403 Was \$14,900 <b>SALE \$12,900</b>	 <b>'95 GMC SONOMA X CAB 4x4</b> AT, AC, V6, Clean #7393 Was \$18,500 <b>SALE \$17,200</b>
 <b>'86 CHEV K15 4x4</b> Snow Plow, V8, AT, AC, Silverado, 58,000 Miles #7383 Was \$9,700 <b>SALE \$7,800</b>	 <b>'95 GMC SUBURBAN 4x4</b> AT, AC, V8, SLE #7382 Was \$28,700 <b>SALE \$25,300</b>	 <b>'94 GMC SAFARI SLT AWD</b> AC, V6, AT, Loaded #7363 Was \$15,489 <b>SALE \$13,500</b>	 <b>'91 JEEP GRAND WAGONEER 4x4</b> AT, AC, V8, Loaded #7225 Was \$11,200 <b>SALE \$8,400</b>	 <b>'95 CHEVY K15 4x4</b> AT, AC, V8, Silverado, 24,000 Miles #7330 Was \$19,730 <b>SALE \$18,728</b>

Prices based on straight sales, Tax & Tags extra. Trades accepted at actual cash value. Must present this ad at time of purchase for sale price.