

Pennsylvania Livestock Auction
Waynesburg, Pa.

Thurs., June 19, 1997

Report Supplied by Auction

CATTLE: SL. COWS: UTILITY & COMMERCIAL 36.00-45.00; CUTTER & BONING UTILITY 30.00-39.00; CANNER & LOW CUTTER 28.00-36.50; SHELLS 20.00 & DOWN. BULLS: YIELD GRADE 1 1500#-2000# 47.00-51.50; YIELD GRADE 2 1000#-1400# 44.00-54.00.

FEEDER STEERS: M&L-1 300-500# 50.00-90.00; 250-280# 48.00-96.00, M 600-900 57.00-61.00. HEIFERS M 1&L-1 300-500# 35.00-78.00; L-1 400-650# 38.00-78.00. BULLS M&L-1 300-620# 42.00-84.00.

CALVES: VEAL.. PRIME 40.00-85.00; CHOICE 38.00-62.50; GOOD 35.00-48.00.

FARM CALVES: #1 HOLSTEIN BULLS 90-120# FEW 35.00-80.00; #2 HOLSTEIN BULLS 80-100# FEW 20.00-40.00; BEEF X BULL&HFRS./HD. 20.00-100.00.

HOGS: BARROWS & GILTS #1-2 210-255# 53.00-56.00; #2-3 255-280# 51.00-56.00; SOWS #1-3 300-500# 30.00-48.00.

FEEDER PIGS: 1-3 15-20# 5.00-17.00/HD.; 1-3 25-35# 10.00-45.00/HD.

LAMBS: HIGH CHOICE 80-100 LBS. 78.00-90.00; CHOICE 70-90 LBS. 80.00 TO 96.50; FEEDER LAMBS GOOD 70.00-89.00; SHEEP 20.00-40.00; FAT SHEEP 31.00 & DOWN.

GOATS: LARGE 60.00-132.00/HD.; MEDIUM 30.00-60.00/HD.; SMALL 10.00-42.00/HD.

HORSES: 35.00-64.00, PONIES 20.00-44.50.

Friend's Stockyard Inc.

Accident, Md. 21520

Report Supplied by Auction
June 16, 1997

STOCK BULLS AND STEERS (200-500 LBS.) 50.00-82.00.

STOCK HEIFERS: 45.00-75.50. SLAUGHTER STEERS: GOOD TO CHOICE 61.75-64.50; MEDIUM TO

GOOD 50.00-61.50, HEAVY CHOICE OVER 1450 LB. 55.00-65.50.

HOLSTEIN STEERS: HEAVY CHOICE 40.00-53.50, LIGHT 34.00-44.00.

SLAUGHTER HEIFERS: GOOD TO CHOICE 61.00-65.35; MEDIUM TO GOOD 47.00-58.00.

BULLS: HEAVY 41.00-50.00, LIGHT 35.00-47.00.

COWS: UTILITY (HOLSTEIN) 36.00-44.25, COMMERCIAL TO GOOD 30.00-35.50, CULL COWS 30.00 AND DOWN.

VEALS: GOOD TO CHOICE 40.00-70.00, MEDIUM TO GOOD 20.00-44.00.

BOB CALVES: 30.00 AND DOWN. HOLSTEIN BULL CALVES — RETURN TO FARM (90 TO 120 LB.)- 60.00-109.00.

HOLSTEIN HEIFER CALVES — RETURN TO FARM (90 TO 120 LB.)- UP TO 130.00.

BEEF CROSS CALVES — RETURN TO FARM UP TO 84.00.

HOGS: TOP QUALITY UP TO 55.25, HEAVY UP TO 53.00, LIGHT 30.00-45.00.

Texas Consignment Tops Southwest Protein Sale

REYNOLDSBURG, Ohio — De Boer Berretta 261, VG-88 percent, consigned by Nico De Boer, Chandler, Texas brought \$2,300 to top the Southwest Protein Sale held May 10 in Chandler.

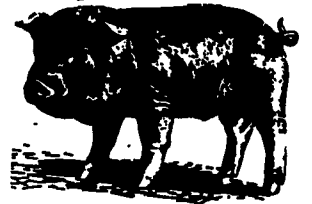
"261" was purchased by Bill Mason, Buhl, Idaho. "261" has a 2-03 record of 359 days, 3X, 22,110 pounds milk, 797 pounds fat and 883 pounds protein actual. She sold due in June to Sunbow Charisma.

The high selling bull was Sun-

bow DeBoer Bruno-ET bringing \$2,000. "Bruno" was consigned by Sunbow Jerseys and Nico De Boer, Cottage Grove, Tenn. and purchased by Theron Jones, Tuttle, Okla. "Bruno's" dam, Greenwood Sooner Elegant, EX-93 percent has a 4-05 record of 28,420 pound milk, 1,250 pounds fat, and 1,053 pounds protein.

A total of 161 animals was sold averaging \$843.09. The Southwest Protein Sale was managed by Jersey Marketing Service, Reynoldsburg, Ohio.

SOWS: 35.00-45.00.
MALE HOGS: 27.00-38.50.
LAMBS, LIGHT AND FEEDER LAMBS, NONE AVAILABLE.
SHEEP: 15.00-42.00.
LIVESTOCK PRICES ARE ALL GIVEN PER HUNDRED WEIGHT!



CONCRETE WATERERS

By **BOHMANN**
quality products



ENERGY-SAVING DESIGN

- 9,000 p.s.i. reinforced hull: internal steel frame, wire mesh, glass fiber
- Epoxy coated sloped concrete trough, resist bacterial growth
- Choice of operation: auto. or manual constant flow
- Add on, thermostat electrical element control (if required)
- Multiple sizes to choose from, capacities from 25-110 gallon

SUPERIOR DESIGN & QUALITY CONSTRUCTION VALUE
DEPENDABILITY YEAR AFTER YEAR

1-800-216-6029

EMPIRE AGRI-SYSTEMS, INC.

315-253-3256 • Grant Ave., Auburn, N.Y. • Fax 315-252-2108

Dealer Inquiries Welcome!

FARMLUND, INC. ROUND BALE WRAPPER



LOAD-WRAP-TRANSPORT-UNLOAD
ONE MAN OPERATION

FOR YOUR LOCAL FARMLUND DEALER CALL:

HAMILTON EQUIPMENT, Inc.

Wholesale Distributor:
567 SOUTH READING ROAD
EPHRATA, PA 17522

1-717-733-7951

Raising Expectations



Forget everything you've heard about compact tractors.

MF 1200 Series Tractors and implements perform way beyond their size and price. Precise lawn mowing. Heavy duty weed and brush clearing. Serious gardening. Landscaping. Materials handling. Trenching. Even light field work. These tractors excel at jobs that used to require big, expensive, fuel-thirsty tractors and implements.

Standard features include water-cooled, 3-cylinder, diesel engines, 3-point hitch and high-capacity auxiliary hydraulics, and rear PTO. Mid-PTO is also standard on the MF 1205, 1215, 1220 and 1230. Choices include ag or turf tires, and a huge selection of implements and attachments.

MF Compacts sized to your needs						
Model	1205	1215	1220	1230	1240	1250 1260
Gross engine hp	16	18	21	27	30	34 40

Stop by your local Massey Ferguson® dealer today and see why the MF 1200 Series tractors are constantly exceeding their owners' expectations.



SEE YOUR NEAREST DEALER FOR DETAILS

C.J. WONSIDLER
1875 Trumbauersville Rd.
Quakertown, PA 18951
(215) 836-1935

D.W. OGG EQUIPMENT CO.
5149 Cap Stone Rd.
Frederick, MD 21701
(301) 473-4250
Westminster, MD
(410) 848-4585

ECKROTH BROS. FARM EQUIPMENT
RD 42, Box 26A
New Ringgold, PA 17950
(717) 943-2181
4810 Kemaville Rd.
Oradell, PA 18069
(610) 366-2095
307 Edgar Ave.
Blacksburg, PA 17718
(717) 794-9917

LEBANON VALLEY IMPLEMENT CO.
700 E. Linden St.
Richland, PA 17087
(717) 866-7518

LAWN CARE OF PA
Martinsdale, PA
(717) 445-4541

M.M. WEAVER & SON
N. Groffdale Rd.
Léola, PA 17540
(717) 656-2321

MEYERS IMPLEMENTS, INC.
400 North Antoin Way
Greencastle, PA 17226
(717) 897-2176

MILLER EQUIPMENT CO.
Stauffer Road
Bechtelsville, PA 19505
(610) 845-2911
NORTHEAST DIST. & EQUIP.
Rt. 108
West Clifford, PA 18413
(717) 222-9090
(717) 222-9020

PEOPLE'S SALES & SERVICE
Oakland Mills, PA 17076
(717) 465-2736

FRANK RYMON & SONS, INC.
399 Route 31 South
Washington, NJ 07876
(908) 869-1424

SCHREFFLER EQUIPMENT
Pitman, PA 17964
(717) 648-1120

S.G. LEWIS AND SON
West Grove, PA 19390
(610) 869-9440
(610) 869-2214

TEST DRIVE ONE TODAY!



MASSEY-FERGUSON