

WANTED PUPPIES

Pure & Mixed Litter lots for resale for companion pets **JACK'S DOG FARM** 215-766-8802 or 215-766-8840 leave message Tues.-Sat. 9 am - 5 pm

WANTED. Small Boston Terrier male and mini Dachshund male. Both must be AKC, small and breeding age. (717)865-3488

Wanted to buy: Purebred St. Bernard any age female. A good country home provided. Call 717/626-4386.

QUALITY DOG KENNELS



AND ACCESSORIES

- Galvanized Tubing
Galvanized Wire
33" Opening
Free Standing
Optional Plastic Floor
Insulated Dog Boxes
Kennel Awnings
(717) 355-7100
Quality Fencing & Supply
147A Amisstown Rd.
New Holland, PA



WANTED Puppies For Pets AKC, Purebred, or Mixed Litters. Please call when 4 to 5 weeks old. Forest Ridge Kennel 296 S. Vintage Road Paradise, PA 17562 717-442-4259 Stud service available for many breeds.

32 MISCELLANEOUS

(2) 48" double drum sanders, \$750/each. 717/354-3105.

38,000 BTU natural gas furnace, \$300. (717)464-2354.

6'X8' walk in cooler, runs great, \$890; 6'X8' walk in freezer, new condenser and defrost timer, asking \$1100. (717)264-2563

Australian Blue Heeler pups, Reg. Eastern pan-handle West Virginia, \$200. 304-754-8904

Beach panel saw, 48" wide, 40hp, 3-phase w/variable drive, w/32 8" carbide blades, 1983, \$1800. 717/354-3105.

Cincinnati horizontal mill #4, 16"x60" table, serial #4J2P5E-2, \$1850. 717/354-3105.

Commercial electric money machine, rolls, counts, separates, lots of metal shelving, peg boards, peg hooks, loading conveyor rollers, safe, grocery carts, all excellent condition. Price to sell 717-274-2119 ask for Pat

Coolant: water soluble machining coolant, synthetic & regular. \$6/gal., retails for \$18/gal. 717/354-3105.

Electric pallet jack, 4500 lbs., \$600. 717/354-3105.

FOR SALE: (15) 14 ft. church seats over 100 years old. 717-568-0782

FOR SALE: Used desks, files, chairs, drafting table, blue print files, fireproof files, shelving etc. NOLT'S Ephrata, PA (717)859-1617.

Long and Alstatter 10 gauge by 10 ft shear, \$5000. Call 717/386-3515.

Magnaflux Model SB2824, 23 Ovolt, 1-phase, 150 amp, \$950. 717/354-3105.

Mazak Lathe, 22"x60", turning center, M3 C&C, \$2800. 717/354-3105.

Mechanical Punch Press, 40 ton, \$750. 717-354-3105.

Oak Church pews, various sizes, most w/cushions. Wood, stone and windows from old stone church building being demolished. 610-926-3124 610-376-2386

Milwaukee horizontal mill model H 2H Universal, \$350. 717/354-3105.

OFFICE TRAILER, 10X55, new heater, new c/a, new windows and doors. Sacrifice \$5,000. Call anytime (610)353-9663

PAYING UP TO \$2.50/sq.ft. for wide walk-smooth attic floor. We remove. Also paying \$.50-\$1.00 for pine and oak siding 1" & thicker. 800/765-3966.

Plasma Torch, 1/2", \$850. 717/354-3105.

Salem 42" abrasive planer, 50hp, 3-phase, \$3500. 717/354-3105.

Sale: Wood Mizer, 1 man band saw, sawmill model LT40HD-G24, new paint, motor overhauled, blade sharpener, many extras. 717-423-6416 Cumb. County.

Taylor T1000 industrial water stove, never used, 250,000 btu, will heat 4500 s.f. to 8000 s.f., \$4500. 717/432-3514.

Time-Saver TOP 30 speed belt sander, 30hp, 3-phase, Serial No.4363, \$1850. 717/354-3105.

Toledo commercial potato peeler, 3ph, \$295. 3 spindle shake machine, \$225. Berkel stainless steel automatic slicer \$425. 4' Bay Maria 14 pans \$475. Hobart commercial coffee grinder \$225. Stainless steel upright cooler w/glass door, like new, \$650. Etc. (717)467-2679.

Turret Lathe, Warner Swesy M3400, 1958, \$2800. 717/354-3105.

Tyler display freezers, 3-phase remote compressors, 6' tall, adjustable wire shelves, various lengths 8'-12'-24', good for grocery store. 717-865-3226

Used Glenwood furnace (hot water); Used Chore-time surprise sow feeder system, auger excluded. 717-354-0426

WANTED TO RENT: Bunk silos for feed storage in southeastern Pa. June 1-Dec 31, 1997. Call (610)756-4475

Wood lathe duplicator accessories \$650 OBO. Craftsman 10" radial arm saw, LCD read out \$250. (717)862-3553.

WANTED: Used tools and machinery. Buy, Sell, Trade, Consign or Finder. B.J. TOOL & SUPPLY, RT 422W, Myerstown, PA. 1-800-772-9845.

Waukesha gas engine, 6-cycle, approx. 100hp, F5546V, 1800 RPM, \$850. 717/354-3105.

This year enjoy the beauty of ornamental Koi Fish in your pond. We now have the freshest & best Koi food in the World! \$6/lb. Superior to all others, including Hikari. Last Coast Koi Co 215-536-6076 (Koi-R-US Fish Farms)

32a ANTIQUES

Improved potato grader, made by Lancaster Pulley Co., Lancaster Pa. 1910. 4'H, 7'L, swing type w/ metal grate, all original in ex cond. \$450/obo. (717)938-5828

33 RECREATIONAL VEHICLES

11' Coachman pickup camper, good condition, \$1500. Avondale, PA 610/268-0212 daytime.

16' Tri-haul bass fishing boat, 50hp Merc engine & trailer, excellent condition, \$1800 OBO. 717/566-8672.

19' '83 Rinker open bow, 170i.o. rebuilt motor and stern drive, \$4500. (717)354-2825 leave message after ten rings.

1984 230 Suzuki Quad Runner, runs good, \$1300. 717/485-5488.

1988 20' Chaparral 200XLC motor 230 OMC Cobra w/depth finder, fish finder and stereo. Trail-master trailer, easy load. Used very little in excellent condition. (717)547-1489.

1988 Ford 28' travel master, 460 engine, auto trans, a/c, generator, ex cond, after 6pm. (609)499-3311

1990 Polaris, automatic, electric start, reverse, original tires, very good condition, \$2195. 717/867-1201.

'87 Country Coach SE, 38', Cat diesel, only 27K miles, stored indoors, like new, loaded, \$74,500. 717-741-0817 Daytime, 717-741-2616 Evenings.

34 AUTOS

1990 Plymouth Voyager Van, SE, 3 seats, V6 automatic, loaded, like new, maroon, 12 mo. warranty on trans., 85,000 miles, inspected to 3/98, \$5700. 717/867-1201.

'56 Chev 4-door hardtop Belair, good condition, green/white, \$5,500 OBO. (717)354-0529.

CHEVY'S, FORD'S, etc. Cars and trucks. Over 300 vehicles. Every Monday 6:30PM. PUBLIC AND DEALERS. YORK SPRINGS PUBLIC AUTO AUCTION, RT 15, York Springs, PA 1-800-222-2038

WANTED: 2.8L V6 engine for 1985 GMC Gimmy. Will pay extra for good motor. 717-263-4139; fax 717-263-0684

See Our Ad In Today's Auction Section Over 1000 Vehicles Auctioned Weekly

35 TRUCKS & TRAILERS

18' Tandem axle trailer, GVWR 10,000lbs with removable sides, like new, \$3000. 717/733-7074.

1967 Mack R model, 33,000 GVW, 707 gas engine, duplex, very clean, \$5,500. (610)584-6790.

1967 V6 GMC, 1 ton truck, dual wheel, 4 speed, 9' enclosed body, major engine, clutch, rear WB, brakes, runs very good, \$1,550. Lehigh Co, (717)756-6626.

1969 Chevy 6 wheeler dump truck w/ plow, new clutch, new brakes and runs good, \$3,100. Leave message, (610)444-6770.

1971 R600 Mack tandem tractor, \$3500; 1976 Int. 750 for parts, good diesel engine; 1968 Ford 700 w/14' flat dump, \$1400. 814/542-4450 Mifflin Co.

1974 Ford L900 dump truck, gas engine, 5 spd, 2 spd, 33,000 GVW, air brakes, snow plow & cinder spreader, yellow in color. Call Bill Martz or Joe Sheetz. (717)755-2911

1974 Transtar cabover tandem, 350C, 13 speed, 370, ran when parked, as is \$750. 609-259-3094 Robbinsville

1975 Int. 1700 Grain Truck, 26,000 GVW, \$4000 610/857-5975.

1976 IH Cargostar-A 18' flatbed, needs fuel line work, engine turns, good rubber, make offer. 717/374-7623.

1979 42' utility, 80,000 GVW, fixed tandem head-board, no caps, 24.5 Buds, good brakes, \$3000. 717-865-6860

1979 White w/20' dump grain body, tandem axle, power steering, A/C, 300 Mack, \$12,500 OBO. (215)794-8457.

1982 Iveco body, good condition, 14' flat bed diesel, \$2400. 717-386-4175

1983 Ford cab and chassis, tandem axle, 3208 CAT motor, Allison auto trans, 50,000 GVW, \$5500/obo. (717)927-9172

1983 IHC tractor, 9670 COE, Cummins engine, 9spd, tandem, PS, good truck, \$4500; (2) 1987 IHC tractors, 2275 conventional cab, 6V92, 9spd, tandem PS, \$6500; Detroit 8V92 engine, 445HP, 1988, \$3500; 8.2 Detroit engine, non-turbo, \$2000. Bradley's Truck Parts. Nottingham, PA (610)932-8994

1984 GMC Tilt Master, 150" cab to axle, 73,000 miles, needs minor work, \$2800. 717-776-7725

1985 F700 Ford w/22' van; 1989 F350 w/12' van. 717/435-0353.

1985 Ford F-350 flatbed dump, 2WD, 4spd w/6.9 diesel engine, good cond. Call Bill Martz or Joe Sheetz. (717)755-2911

1985 Mack tractor, R model, 350 hp, E-6 engine, 10 speed trans, Mack pedigree engine, 11 months old, lost contract, must sell! 610-562-7801 leave message.

1986 Ford F250, 4x4, V8, heavy duty, 4-speed, gray, new tires, good condition, \$3200. 410-287-3560

1986 IH 1900 DT466 engine, 10-speed, 22 trans, 32,800 GVW, long wheel base, asking \$13,500 717-632-7534

1987 F-150 4spd 101K, black bedliner, \$2700. Call evenings. (717)428-0250

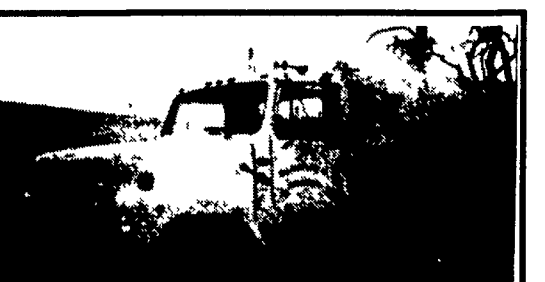
1987 Ford LTL 9000 tractor w/42" sleeper, air ride suspension, 400 CAT engine, 13 spd trans, must see to appreciate. Call Bill Martz or Joe Sheetz. (717)755-2911



1987 Western Star 300 hp Cat, Jake, 9 speed, LT, WT, 25,000 lb., 22' aluminum box, 850 bu. capacity 717-258-8924 after 8 pm No Sunday Sunday calls



1987 Ford Shu-Pak 3208 Cat, Automatic RH LH Drive. Good condition. \$5,500.00 Call 610-485-5174



1989 IH F2575, 260K Mi, 12 F, 38R, 9 speed, 350 Cummins, Jake, Wetline, Good Condition \$15,500 • (717) 382-4881

PUPPIES WANTED All kinds - AKC, Pure and Mixed Call now for dependable pickup at 7 weeks old Call Randy 717/822-2033

Puppies Wanted Chocolate Labs 1 litter per week for 6/14 & 6/21 Call 717-539-8493

WANTED TO BUY Puppies & Kittens Mixed breed & AKC for resale in pet store. Call when young for pick-up at 7 weeks. Fair price paid. Norman Wheeler 610-380-1445 (8 AM-11 AM) 800-4A-PUPPY (11 AM-9 PM)

WANTED AKC Registered Rottweiler Pups Top Prices Paid 1-800-349-9970 If you have Rottweiler puppies for sale, call us before 8 a.m.. cut out this ad

Professional Kennel Choice Dog Food Offers 4 Formulas With Poultry and Chelated Minerals 21%-12% 26%-18% 22%-14% 30%-20% All Products Are Soy Free (717) 799-0192

ATTENTION KENNELS Have You Fed Country Prime Dog Food With These Results 1. Seizures In Your Puppies 2. Females Producing Poor Litters 3. Excess Fat Which Caused Mold If So, Please Call 717-284-5944

LIVE GAME FISH Fingerlings and Adults, Large and Small Mouth Bass, Spotted and Rock Bass, Bream Crappies, Trout, Channel Cats, Bullheads, Walleyes, Perch, Minnows, Northern, Pickerel, Muskies, Red Gills, Mulletts, Carp, Eels, Turtles, Frogs, Israeli Carp Also Aquatic Plants and Water Lilies COLORFUL CATALOG \$2 00 Truck, Air and Parcel Post Delivery ZETT'S FISH HATCHERIES DRIFTING, PENNA. 16834 Phone: 814-345-5357

Used Machine Shop Equipment 10 H.P. Belt driven metal planer. Table 13'6"x31", overall length 20'.....\$900 15 H.P. Hydraulic driven metal planer. Table 37"x10', overall length 16'.....\$1,500 Large pedestal grinder, double ended, 18" wheels, 10 H.P.....\$600 7 - M.G. Industnes oxygen cylinders..\$100 ea. M.G. Ind. - CO2.....\$100 410/452-5292

POWER SYSTEMS ELECTRIC, INC. SPECIALIZING IN GENERATOR SALES, SERVICE AND RENTALS (717) 933-5617 (800) 875-6964 (1) 175 KW Volvo Diesel, Used; (1) 35 KW Chrysler L-p-g; New PTO Generators In Stock