

Diesel engines, 60hp, enclosed, water-cooled w/ clutch, excellent condition, \$2000/each, 5 or more \$1800/each. Larger units available. Call for repowering service. 717/464-4461.

1987 Case 580K, 4x4, extend-a-hoe, CH, stereo, 3,250 hrs., good paint, new rubber on front, 70% on rear, good working machine. Asking \$28,000 negotiable. (717)747-0434.

JD 450B track loader, above average, 75% undercarriage, turbo, \$10,000. 215-536-3649

John Deere 450G dozer, 6-way, new grousers, rollers good condition, 814/793-4640.

**Case 602, 1102 Rollers Demonstrators Call For Special Pricing**

Case 1845C Uniloader Approx 3500 hrs.....POR  
 1981 580D Loader Backhoe, Cummins Engine.....POR  
 1990 Case 1845C Uniloader.....\$13,900  
 Dresser Model 200 Hydrostatic Loader, 1991 machine w/2600 hrs.....\$39,900  
 Gehl 650 Paver.....\$12,500  
 Mauldin Model 30 Roller.....\$6,500  
 1835B Case Uniloader.....\$7,500

**Used Wheel Loaders**

Kobelco LK500 ..... POR

**Rental Returns**

602B, 1102 Rollers In Stock  
 Stanley 695 Hammer  
 Call For Pricing on Rental Return  
 90 Series Case Excavators

**Vernon E. Stup Co.**  
 5859 Urbana Pike Frederick, Md. 21701  
 301-663-3185

- ★ 1988 Case 855D Crawler Loader, 4 in 1 or GP Bucket, Exc. Condition..... \$30,500
- ★ 1987 Case 850-D 6-way Dozer, VG Condition..... \$29,500
- ★ 1987 Case 450-C 6-way Dozer, Low Hrs., VG Condition.. \$24,000
- ★ 1986 JD 610B, Backhoe Loader, 2WD, Cab, E-stick, VG ...\$19,500
- ★ 1986 Dresser TD7E, 6-way Dozer, VG Condition ..... \$18,000
- ★ 1986 Dresser TD8E, 6-way Dozer, VG Condition ..... \$24,000
- ★ 1981 450-B Crawler Loader, VG Condition..... \$11,500

**Mid-Maryland Equipment**  
**(301) 371-5500**



Komatsu D66S Crawler Loader, EROPS, good UC, GP Bucket.....\$36,500



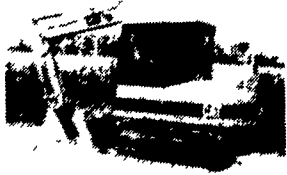
1993 Cat 416B 4x4, Ext-A-Hoe, EROPS, New Rubber.....\$39,500



1993 Bobcat 2410 4WD Articulating Loader, Good Rubber, Aux. Hyd. \$18,500



GSI lift, 3'x6' platform, 24' working height, elec. power.....\$3,200



'93 Ford 555D TLB, ROPS, 2WD, 2400 hrs.....\$24,500

'94 JCB 210S TLB 4x4, EROPS, 4-in-1 bucket, 1400 hrs... \$35,000

JD 450C Crawler Loader, GP bucket, good UC, cleaned & painted.....\$14,500

Case W14 4x4 wheel loader, EROPS, good condition. \$13,500

'89 Case 450C Crawler Tractor, cleaned & painted, excellent condition .. \$24,000

Gradall 534B Rough Terrain Forklift 4x4, 8000 lb, 37' Reach....\$28,500

1990 Cat E70B Excavator, low hrs, 30" bucket, plumbed for hammer.....\$27,000

**No Sunday Calls**  
**Financing & Lease Purchase Available**

**Weaver's Equipment Sales**  
 RD#3, Box 849, Milton, Pa 17847  
 Phone 717-742-3784, 717-742-2712

**FOR NEW AND USED CONSTRUCTION EQUIPMENT PARTS AND ATTACHMENTS CALL H.E.L.P., INC.**

**(717) 469-0039**  
**1-800-446-0505**

Specializing In Caterpillar  
 Parts also available for Case, John Deere, IHC, Fiat, Etc.

**HEAVY EQUIPMENT LOADER PARTS, INC.**

10070 Allentown Blvd.  
 Grantville, PA 17028

**PARTS PRICED RIGHT DISMANTLING MOST MAKES & MODELS**

OF CONSTRUCTION EQUIPMENT		
Cat	IHC	Galion
Case	Michigan	Wabco
John Deere	Hough	Dynahoe
Trojan	Terex	Koehring
Drott	Hein Werner	AC/Fiat Allis & Others

Over 650 Machines Dismantled

**NATIONWIDE PARTS LOCATING SERVICE**  
 In addition to our own large inventory, we have two computerized parts locator services, nationwide & Canada, ready to serve you. In less than a minute, over 600 used & new parts & equipment suppliers will receive your parts request. Parts are located easily & at substantial savings. Try Our Services.

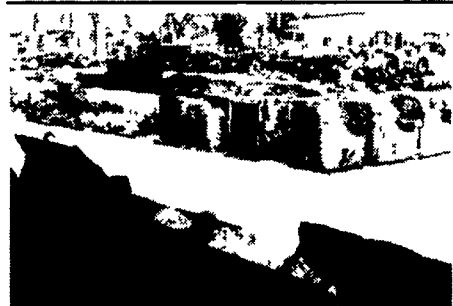
Save \$\$\$ Parts Shipped Anywhere Direct To You. All Parts Guaranteed  
 "We Return All Phone Calls"

**BALANDA EQUIPMENT CO., INC.**

P.O. Box 407 • Route 29 • Palm, PA 18070  
 Phone: (215) 679-3900  
 • Fax: (215) 679-8727

**TOLL FREE: 1-800-322-8030**

**ATLAS**



Large Inventory of Parts And Equipment

**USED EQUIPMENT**

**RUBBER TIRED LOADERS**

- 1992 Cat 966F S/N 4YG1036 Cab, AC - On Rent
- 1983 Cat 966D S/N 99Y2547 Cab, 90% Tires
- 1964 Cat 966B S/N 75A1347
- 1972 Cat 950 S/N 81J5136
- 1988 Cat 936E S/N 33Z3868 New Trans, Cab - On Rent
- 1975 Cat 920 S/N 62K7306 - On Rent

**TRACK LOADERS**

- 1972 Cat 963 S/N 21Z4039
- 1986 Cat 973 S/N 86G00190
- 1967 Cat 955K S/N 61H1490

**BULLDOZERS**

- 1987 Cat D3B S/N 23Y2255
- 1979 Cat D3B S/N 23Y 0436
- 1988 Cat D3B S/N 27Y4924 - On Rent
- 1988 Cat D3C LGP S/N 5CJ 726 5000 Hrs
- 1979 Cat D3B LGP S/N 6N1149
- 1989 Cat D3CLGP S/N 1PJ0685 3900 Hrs
- 1989 Cat D4H LGP S/N 9DB1690 2500 Hrs
- 1989 Cat D4H S/N 8PB3521
- 1995 Cat D5H S/N 8RC6050
- 1987 Cat D6H S/N 4RC1569 - On Rent

**MOTOR GRADERS**

- 1976 Cat 120G S/N 87V2266 2500 Hrs
- 1967 Cat 120 S/N 89G2244

**LOADER BACKHOES**

- 1988 Cat 416 S/N 5PC6805 6000 Hrs, 4WD, Estick, Cab
- 1994 Cat 416B S/N 8SG7654 700 Hrs, 4WD, Cab
- 1994 Cat 416B S/N 8SG5685 600 Hrs, 4WD, Estick, Cab
- 1995 Cast 426B S/N 6KL725 975 Hrs, 4WD, AC, Estick, Cab

**ROLLERS**

- 1988 Ingersoll Rand SD100D Dirt Roller 2500 Hrs

**BUCKETS/ ATTACHMENTS**

MANY BUCKETS FOR RENT OR SALE

- 1 - 12" 416/426 Buckets
- 2 - 18" 416/426 Buckets
- 2 - 24" 416/426 Buckets
- 2 - 36" 416/426 Buckets
- 1 - 24" 225 Bucket
- 1 - 36" 225 Bucket
- 1 - 30" Mitsubishi Rock Bucket
- 1 - 18" PC 300 Bucket
- D6C Root Rake
- D8H Root Rake
- 977H Bucket
- (2) D8H Blades w/Push Arms
- 225 Bucket Links
- 446 Cat Rims



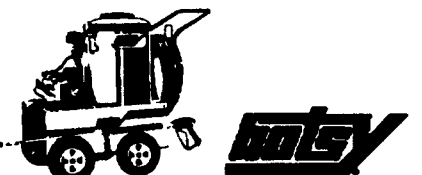
"Many Buckets To Choose From - Call For Pricing"

**DISMANTLING FOR PARTS**

- (1) Cat 235 32K
- (3) Cat 225 51U
- (3) Cat 977L 11K
- (1) Cat 988A 87A
- (1) Cat 955 8Y
- (1) Cat 955K 85J
- (1) Cat 966B 75A
- Many Others, Call With Request!

**REBUILT/ TAKE OFF UNITS**

- 225 Hydraulic Pumps and Valves
- Many Hydraulic Cylinders
- Many Engine Heads
- 955K Trans and Torque
- Rebuilt 3304 engines to fit Cat 963
- (1) Cat 963 rebuilt engines w/warranty.
- Cat 9588 lift cylinder
- Cat E1300 stick cylinder
- (5) 225 boom cylinders
- (2) 225 rebuilt hydraulic pumps
- Cat 977 transmission
- Cat 977 torque



**PRESSURE WASHERS & STEAM CLEANERS**

Atlas Carries a complete Line of Hotsy hot-water & cold water pressure washers... biodegradable pressure-washer detergents.. accessories and spare parts.. hot-water parts washers.. & wash-water treatment systems. Easy-purchase financial plans available for all Hotsy's!

**Authorized Dealer For: Bodine Grapples Drydene Oil Hensley Teeth**

**For Your Used Parts & attachment needs (888) 545-0415**

**Call Bob Payne /Kevin Kobus Tina Dobies /Pat Burns 302/328-0513**

**FAX 302/328-5033 720 Pulaski Hwy Rt 40 Bear, DE 19701**