

Hauseman, Steinour Named Assistant Vice Presidents

READING (Berks Co.) — CoreStates Bank, N.A. announced Scott A. Hauseman, Sinking Springs, and Wayne A. Steinour, Gettysburg, have both been promoted to assistant vice president in for the Agri-Finance Department.

Lawrence F. Delp, president, CoreStates' Keystone Market, announced the promotions of both Hauseman and Steinour.

Hauseman is responsible for the portfolio of commercial production agricultural customers, including a cross section of family farms, partnerships and corporations involved in dairy, hog, poultry, mushroom and vegetable enterprises.

Prior to this new position, Hauseman was a banking officer for agrifinance and was employed by the former Meridian Bank since 1992 and Agway since 1985.

Hauseman received his bachelor's in agricultural business management from Penn State in 1985.

Hauseman serves on the Conrad Weiser Vocational Agriculture Advisory Board, the Berks Cooperative Extension Board, and the Berks County Farm-City Council. He is a member of St. John's Lutheran Church and the Penn State Nittany Lion Club.



Scott A. Hauseman



Wayne A. Steinour

Steinour is responsible for the development and ongoing maintenance of the CoreStates agrifinance commercial loan portfolio in Adams, Franklin, York, and northern Maryland counties.

He was previously a branch manager and was employed by the former Meridian Bank since 1989 and the former Hill Financial Savings Association since 1984.

Steinour received his bachelor's in business administration/management from Shippensburg University. He also completed course work at the Northeast

School of Agricultural Lending at Cornell University, the Institute of Financial Education, and Penn State College of Agriculture.

Steinour serves on the York County Chamber of Commerce Agricultural Committee, he is a member of the Adams County Farm Bureau, and the Adams County Beef Producers Association. Steinour is also a committee member for the Adams County 4-H Youth Exchange. He is involved with First Baptist Church in Gettysburg where he is a deacon.

Case Launches New Tractors

PHOENIX, Ariz. — Case Corporation recently introduced the all-new Case IH MX Series Maxxum® tractors, featuring superior power and PTO-torque rise, quieter operation, and fewer maintenance requirements, as well as expanded versatility for virtually every agricultural task from row-crop farming to livestock production.

"From the ground up, the MX Series are all-new tractors designed and manufactured to carry on the proud tradition of the Maxxum heritage," said Case Corporation's Russ Green, director, agricultural marketing. "From heavy-duty feedlot chores to high-acreage row-crop farming, the versatile Maxxum has become a mainstay to livestock and general agricultural operations. The MX Series will continue to do what the Maxxum line has done from the first — radically change what farmers expect from a tractor in this horsepower category."

The MX Series tractors — which include the MX100 (85 PTO hp), MX110 (95 PTO hp), MX120 (105 PTO hp) and MX135 (115 PTO hp) — were unveiled at the company's Desert Vantage Point, meetings attended by nearly 3,000 Case IH equipment dealers, customers, and competitive equipment owners.

"These new tractors feature improvements in every area farmers have asked for — more horsepower and PTO-torque rise, increased hydraulic and hitch performance, greater visibility, fewer service requirements and a more rugged, durable frame, to name a few," said Green. "We chose to unveil the MX Series at the Phoenix event because farmers and



The new line of Case IH MX Series Maxxum® tractors feature an all-new sleek design and offers farmers superior power, performance, reliability, serviceability, and operator comfort. Making up this new family of tractors are the MX100 (85 PTO hp), MX110 (95 PTO hp), MX120 (105 PTO hp), and MX135 (115 PTO hp).

dealers played such a large part in the creation of the new tractors. All product development at Case is customer driven, and that's especially true with the MX Series."

Each tractor in the MX Series is available in a high-clearance version and can be equipped with 54-inch rear tires for maximum crop clearance. A factory-installed, integral-mounted loader with all-new optional joystick control, the L300, is also available for each model. Both the high-clearance and L300 options bene-

fit from the tractors' new, front axle and tapered cast-iron frame that provides extra strength for spray tanks and loader work.

According to Case's Larry Lanie, marketing specialist, tractors, farmers can get more done in a day's time due to an up to five-horsepower increase over previous Maxxum tractors. Additionally, each six-cylinder engine is EPA certified, has five-hole injector nozzles and an in-line fuel injection pump for added power and performance.

The extra horsepower, Lanie said, is complemented by a new flare-tipped viscous fan, which optimizes coolant-temperature control.

Power is further increased by a PTO-torque rise of up to 44 percent on models in the MX Series, providing non-stop performance in tough PTO applications. And despite more size and power, the new engines are quieter and virtually vibration free because they are iso-mounted.

Improved hydraulics and hitch functions make MX Series tractors better performers during both loader applications and row-crop farming.

For loader tasks, Lanie said, hydraulic-pump capacity is 47 percent greater for faster cycle times, and hydraulic pressure is increased 7.2 percent to lift heavier loads more quickly. When fitted with the L300, the MX Series tractors have a lift capacity of up to 3,850 pounds and a breakout force of up to 6,300 pounds.

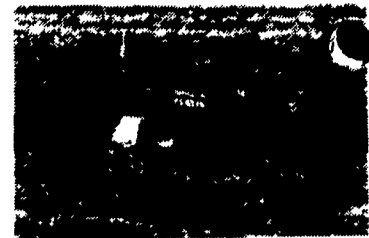
Improvements to the transmission and structural integrity of the MX Series mean greater reliability and durability for operators.

Heavy-Duty Baler Offers Two Sizes

NEW HOLLAND (Lancaster Co.) — The new Model 585 New Holland three-tier square baler is designed for custom operators, commercial hay producers and large-acreage livestock operations.

It is available with either 16-inch x 22-inch or 15-inch x 22-inch chamber cross section. The new heavy-duty baler features an in-line pickup and feeder design to save more leaves in large windrows.

The 92-inch 585 pickup is the widest in the industry, noted New Holland Product Manager Bob Hatz. He points out this wide Super-Sweep pickup with closely spaced tines gathers uneven or large double windrows and unraked swaths with less loss and allows baling at higher ground speeds. The long bale chamber with 4-way bale tension forms high-density, uniform bales that are sized right for automatic bale wagon handling and shipment in



The new three-tier New Holland Model 585 baler is available in either 16-inch x 22-inch or 15-inch x 22-inch bale chamber size. Wide pickup and in-line and feeder design save more leaves from large windrows. Swing-tongue design allows offset or in-line operation. Independent power allows high-capacity baling no matter what towing vehicle is used.

commercial hay marketing.

The new baler is powered by a Deutz air-cooled diesel engine for independent power to allow high-capacity baling no matter what towing vehicle is used.

Farm Credit Promotes Hudish

YORK (York Co.) — York Farm Credit, ACA, has announced the promotion of David A. Hudish to the position of vice president — credit and chief credit officer.

"Dave has had a steady history of increased responsibility in the credit management area over his fifteen-year career with Farm Credit," said Jay Rush, president of York Farm Credit. "He has demonstrated the skills and knowledge on numerous occasions that I feel are key for the position."

Hudish brings many qualifications to the position, including a bachelor's degree in agricultural mechanization from Penn State, as well as many years of agricultural credit experience, most recently as assistant vice president — credit, servicing larger commercial agricultural loans for York Farm Credit.

He is a native of Clearfield



David A. Hudish

County, Pennsylvania, where he grew up on a farm, which he and his brother still maintain.

Auto-Bagger Is Portable



Feedmobile's Auto-Bagger is a portable, accurate bagger that can be used to bag any ingredients, including grain, feed, compost, sand, and minerals.

LITITZ (Lancaster Co.) Feedmobile has introduced a compost and chicken litter Auto-Bagger.

The Auto-Bagger is a portable, accurate bagger that can be used to bag any ingredients, including grain, feed, compost, sand, and minerals.

The Auto-Bagger will bag chicken litter for reuse as feed or fertilizer.

Farm Credit Welcomes New Employee

LEWISBURG (Union Co.) — Northeastern Farm Credit, ACA welcomes Peg Rotello to its Coudersport branch office as a part-time customer service representative.

Rotello has been working for Northeastern Farm Credit in a temporary capacity since March. Before joining Northeastern, she was county executive director for

the Potter County Farm Service Agency, USDA in Coudersport, where she had been employed for 26 years.

Executive Vice President Bobby R. Jones comments on Rotello, "Peg is a wonderful addition to our Coudersport staff. With all her experience in working with those in the agricultural industry, she is a natural in this position."

June
IS
DAIRY
Month