

THURS. JULY 3 - 4PM Coin & Stamp Collection Held at the Lisburn Fire Co pavilion, Lisburn Pa. Ike Eichelberger, auct
 FRI. JULY 4 - 8.30 AM & SAT.,

JULY 5 - 8 30 AM Antiques & Collectibles, Dillsburg, Pa. Off Rt. 15, go west on mountain Rd for 3 mile, go straight onto Union Church Rd., 3rd place on right Paul Vance, seller Rentzel's Auction Service

FRI. JULY 4 - 9AM 60+/- Acre Northumberland Co. Farm Antiques, collectibles, household, farm tractor, lawn mower, etc. George E Deveraux, owner Mark J. Jones, Auct.

SAT. JULY 5 - Horse Sale. Mel's Stables. Sale Held at Wallace Rd. Directions: From Rt. 23 in New Holland, Go South on Brimmer Ave., 2 Mi. South on New Holland Road to Hill Rd. Turn Left on Hill Rd. Proceed 1.2 Mi. to Sale on Left, From Rt. 340 East of Inter-

course Take New Holland Rd 2.5 Mi. to Hill Rd. Right on Hill Rd to Sale on Left. Mel Hoover Auct.
 SAT. JULY 5 - 9AM Real estate & Personal Property. In Perry Co., Carroll Twp, at 689 Windy Hill Rd., Shermans Dale, Pa in the village of Shermans Dale turn onto Windy Hill Rd. and go approx. 1 1/2 mile to auction on the right Jane & John Bear, owners Fahnstock's Auction Service

Lancaster Farming, Saturday, June 14, 1997 B45

SAT JULY 5 - 9AM Real estate, 21.6 acre farm w/Sandstone 4 bedrm house, separate 9 acre tract & 8 8 acre tract, personal property, antiques, furniture 513 Old Road, East Earl, PA By Lavina Brubaker Kline, Kreider & Good, aucts

SAT JULY 5 - 9AM Real Estate, Antiques, Household Goods & Tools At 427 S. Tenth St., Akron, Lanc Co., Pa For Avous E. Greenly, Horst Aucts

SAT JULY 5 - 12 Noon, Real Estate Halifax Area Sawmill & Land Ensminger Aucts

SAT JULY 5 - 12 Noon Real Estate Auction, Route 6, West of Galeton, Pa Fernwood Auction Co

MON JULY 7 - 7PM 1 785 Ac Country Property Also a 1 Acre Building Lot From Ephrata take Rt 322 W, turn right at Horst's Auction Center onto Durlach Rd., follow Durlach Rd to Mt Airy, turn left onto W Church Rd, Clay Twp, Lanc Co., Pa Tim E. Lausch Aaron E. Martin, aucts

TUES JULY 8 - Fed Cattle Sale Carlisle Livestock Market, Inc (717)249-4511

TUES JULY 8 - 6PM Real estate located along Upper Valley Rd, West Sadsbury Twp, Chester Co Open House Sat June 21 from 1-3 PM Terms by Dauphin Deposit Bank Hoping Farm Agency, Inc

FRI JULY 11, SAT JULY 12 & SUN JULY 13 - New York State Two Cylinder Expo Association Largest Antique John Deere Tractor & Implement Show in the Eastern US Held on the New York Steam Engine Association Grounds Off Rts 5 & 20, East of Canandaigua, NY

ATTENTION!

Ephrata Mennonite School
 13th Annual
BENEFIT AUCTION

FRIDAY, JUNE 20, 1997
 4:30 PM - Pig Roast, Ice Cream Sundae Bar
 6:00 PM - Auction Begins
 Gift Certificate, Winross Trucks and More.

SATURDAY, JUNE 21, 1997
 7-9 AM, Ham & Cheese Omelet Breakfast
 9:00 AM - Auction Begins
 Quilts and Wall Hangings, Furniture, Special Items, Farm & Home Items, Wooden Lattice Arch/Rose Arbor, Park Bench, Storage Sheds, Limited Edition H.O. Scale Train Set/Local Business on Cars, Pedal Tractor, Toys, Die Cast Metal Banks, Crafts, Cedar Chests, Baked Goods, and Certificates.

Enjoy...
 Chicken BBQ, French Fries, Sausage Sandwiches, Ice Cream, Homemade Pies & More all day!

Take Shoeneck Road 1/2 mile off Route 272 north of Ephrata.

For more information, call 717-336-6042

Public Auction
TRUCK - TRACTOR - CEMENT EQUIP. - FURNITURE
THURS. EVE. JUNE 26
AT 5:00 P.M.

LOCATED in Mifflin County, 5 miles south of Lewistown, PA., on route 103, 1/4 mile west of Granville, PA

FURNITURE AND GUNS
 Rem. model 7600-30-06 w/scope, rem. model 7600-270 w/scope, Mauser action 30-30 rifle w/scope, bicycles, White King chest freezer, GE 30 in. gas stove, Queen Anne type ext. table, 4 maple chairs, chest of drawers, some misc. housewares and kitchen utensils.

BOATS - TRUCK - TRACTOR - CEMENT EQUIPMENT
 1985 Chev. Scottsdale 20-4 w.d. truck runs good w/good rubber, Cub Cadet 2155 hydro 15 hp tractor (new last yr.) w/mower deck, Troy Bilt 5 hp rototiller, Mustang 960 dsl. skid loader w/tooth bucket, pallet fork, Ford 8N tractor runs good w/new rear rubber, new 6 ft. 3 pt. harrow, Ferguson 2 bottom plow, 3 pt. potato plow, new Fish Master 14 ft. flat bottom boat, 14 ft. aluminum V bottom boat and trailer, Sears twin Eagle 15hp outboard motor, Turbo 27 lb. trolling motor, 2 Echo power washers, 11 hp power washer, Magna Force 6-1/2 hp upright air compressor (like new), Multiquip 48 in. power trowel, vibrating screed (for mounting on 2x4), 4 power concrete buggies, 80-10 ft. pcs. of 6 in. metal, street (curb) forms, several 6x20 ft. curing blankets, scaffolding ext. brackets, Reddy 155,000 BTU kerosene heater, misc. forming lumber, Delta 10 in table saw, shop vac., Lincoln SP-85-110 volt wire welder, hyd. floor jack, Rena Line tool chest, misc. cement and shop tools and misc. cement working supplies.

Terms - CASH OR GOOD CHECK
 Job Johnny Food stand
OMAR AND CAROLYN STOLTZFUS
 717-248-4275
 Mark Glick - Auctioneer • AU-349-L

PUBLIC AUCTION
 IN AND FOR THE UNITED STATES
 BANKRUPTCY COURT FOR THE
 DISTRICT OF DELAWARE.
 RE: CORNER KETCH TREE
 SERVICE, INC.,
 CASE NO. 97-0401HSB Chapter 7
MON., JUNE 16, 1997
at 1:00 P.M.

Sale location: Wrangle Hill Industrial Park, 3310 Wrangle Hill Rd., Route 72, Bear, DE (between Rt. 40 & Rt. 71)

1988 Ford dump truck, 1992 Vermeer Brush Chipper #1250, Vermeer model 206 stump grinder, various tools

TERMS: Cash or guaranteed funds only. INSP: From 11:00 a.m. day of sale.

RUDNICK ASSOCIATES, AUCTIONEERS
 (302) 764-3347

Tools - Guns - Camper - Misc.
PUBLIC AUCTION
SAT., JUNE 21, 1997
@ 10:00 AM

Located, Near Robeson, Berks Co., PA, From Robeson (Rt. 422) Take The Bernville Robeson Rd. Towards Bernville Approx. 1.5 mi. Turn Left on Snyder Drive, Go 1.2 Mi To Brick Rancher On Left. (Follow Signs)

GUNS - HUNTING & FISHING EQUIP.
 Rem. Mod. 760 30-06 Pump W/Redfield 4X Scope; High Standard 12 Ga. Pump; Glenfield Mod. 50 12 Ga. Bolt; 20 Ga. Mossburg Pump; All Guns In Very Nice Condition, 2 Clumber Tree Stands; Sev. Duck Decoys; Deep Sea Fish. Rods & Equipment; Lots of Sinkers & Bucktail Lures; Lots of New Rubber Lures; Tackle Boxes; Gun Gleaning Kits; Misc. Knives;

CAMPER & CAMPING SUPPLIES
 1985 Coleman Columbia Lightwt. Pop-Up Camper W/Stove & Sink Sleeps 6, W/Awning (Offered W/Reserve); Sev. Coleman Heaters; 12 x 12 Screen House; 12 x 12 Yard Canopy; Bug Light; Porta Toilet; Holding Tank; Shuffleboard Set; Propane Cylinders; And Other Misc. Camping Supplies.

TOOLS - TOOLS - TOOLS
 Craftsman 12' Band Saw & 10' Bench Drill Press; 6" Belt & Disc Sander on Stand; (I Think We Have At Least 1 Of Every Craftsman Tool Made?) The Following Brand New Craftsman Tools; 109 Pc Reg/Met. Socket Set, 82 Pc. Socket Set, Wrench Sets, Pliers Sets, Vise Grip Sets, Screw Drivers, Work Light, Chisel Set, Sledge Hammer, Lots Of Brand New Craftsman Tools; The Following Like-New Craftsman Tools; Elec. Hand Grinder, Adj. Wrenches, Lots of Socket Sets, Lots Of Hand Tools, 3" Belt Sander, Finish Sander, Bench Grinder, Drill, Air Ratchets, 51 Pc. Tap & Die Set. And Many Other Good Craftsman Tools, Milwaukee Sawsall; Lots Of Sawsall's Blades; Lot of New Sand Paper; Pipe Threaders; Axes; Grease Guns; Pulley Pullers; 2 Air Impact Wrenches; Air Paint Guns; Air Chisel; 4" Makita Disc Grinder; New Porta Cable 7 1/4" Saw; 2 Air Compressors; Air Drill; Air Sander; Other Misc. Air Tools; Lead Melting Pot; Torch & Soldering Kit; Glue Gun; 21" Chain Saw; Num. Bolt Cutters; Sev. Rigid Pipe Cutters Up To 4", Rigid Pipe Wrenches, All

Sizes; Rigid Strap Wrench; Bench Vise; Metal Wrkbench; Buffer; Carpenter's Tool Chest Full of Tools; Sev. Old Draw Knives; Come-Along; Jack Stands; Post Hole Digger; Old Universal Hanging Scale; Painting Supplies; Cord & Cord Reels; Lots of C Clamps; Work Mate Clamp Table; New Tape Measures; New Chains; Chain Sharpening Tool; New Level, Cordless Drill, Engraver; Sev. Snap-On Wrenches; Torch; Chain Hoist; Rope Tackling; New 5' Werner Fiberglass Stepladder; Pipe Vise; Many Good Quality New & Like New Tools Too Numerous To Mention! Bins & Bins Of New Fittings & Hardware; Lots Of organizer Bins Loaded; Heavy Metal Bins & Cabinets; Air Filter/Regulator, Sev. Elec. Motors; Hoses; New Wood Handles; Lots Of Stackable Plastic Trays & Bins; Auto. Elec. Fittings & Tools; Sev. Air Tanks; Hydraulic Jack; Homemade Table Saw; Misc. Pipe & Lumber, Lots Of Muffler Clamps & Car Headlights; Misc. Locks, Gauges, Valves & Misc. Fittings; Lots Of New Items; Punches;

HESS TRUCK COLLECTION
 15 Hess Trucks, 1989 Thru 1994; Sev. Older Hess Trucks

LAWN & GARDEN EQUIP. & MISC.
 4 1/2' Snowplow, Fits Cub Cadet W/Hydraulic Turn, Like New, Trailer Style Grass Catcher; 2 Brinley Plows; Lawn Roller; Walk-Behind Garden Seeder; Shovels; Forks; Misc Lawn & Garden Tools;

MISC. H-HOLD - COLLECTIBLES - NEW ITEMS
 New Drop Ceiling Track; New Elec. Basebd Heaters; Meat Saw; Cleaver; Meat Grinder W/Elec. Motor; 2 Old Egg Baskets; Old Oil Can; Glass Water Bottles; Cast Teapot; Brass Swan & Giraffe; Sm. Iron; Mac Emblem; New Items; Flashlights, Bow Carrying Cases, Sev. Heaters, Auto Dog Feeder; Sev. Cases Anti-Freeze, And More. Sev. Old Car Banks; Note: Nice Sale With Good Quality Merchandise.

Sale For: Mrs. John Forry

Terms: Cash or Pa. State Check With ID. Neither Sellers Nor Auctioneers Assume Any Liability In Case Of Accidents Nor Are They Responsible For Articles After Sold. Announcements Made Day Of Sale Takes Precedence Over Printed Matter. REFRESHMENTS SERVED.

LES LONGENECKER
AUCTIONEER AU-002975-1
 (610) 488-6575 "CALL US"



PUBLIC AUCTION
 of
Antiques, HH Goods, Furniture, Guns, Shop Tools, Hand & Garden Tools
Sat., June 21, 1997
 • 9:30 A.M.

Guns: 12 Noon
 Rear of 135 W. Main Street, Strasburg, PA
 Dir: From Square in Strasburg take W. Main St., turn right on N. Jackson St., Sale on right.

KAWII ORGAN, Single Bed, Boxspring & Mattress, Kitchen Table & Chairs, Uph. Side Chairs, Sewing Machine, Bar Stools, Child's Chair, Rocker, Cradle, Vibrating Chair, Lawn Chairs.

Whirlpool Refrig., Elec. Range, **ELEC. CHAIR LIFT**, Elec. Heaters, Air conditioner, Coolers, Radios, Fans, Phones, Modern Beatley Clock, **GWTW LAMP**.

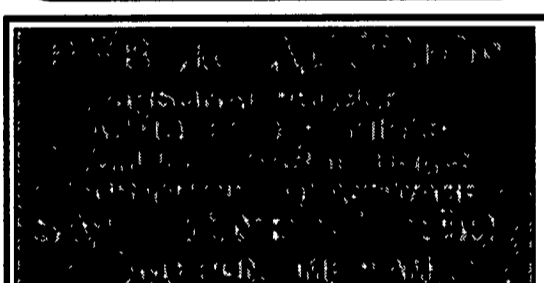
Bedding, Linens, Rugs, **CHINA, GLASSWARE**, Canning Jars, **CHERRY & APPLE SEEDERS**, Milk Can, CI Skillets, CI Banks, Baskets, Xmas Items, Lantern, Books, Iron Trivets, Ox Yolk, Farm Toys, Fishing rods.

GUNS: STEVENS 22 LONG RIFLE, STEVENS MODEL 22-410 OVER & UNDER, STEVENS 20 GA. SHOTGUN - MODEL 58, MAUSER 8MM BRITISH RIFLE - MODEL 98, REMINGTON PUMP SHOTGUN - MODEL 141, REMINGTON DEER RIFLE, REMINGTON 12 GA. SINGLE BARREL SHOTGUN NO. 48, RIVERSIDE SINGLE BARREL SHOTGUN, SPRINGFIELD RIFLE - MODEL 1898, 7 MM BRITISH RIFLE.

5 HP MONTGOMERY WARD ROTOTILLER, HOMELITE WEDEATER, GARDEN PLANTER W/PLATES, Garden Hose, Wheelbarrow, Ropes, Tree Trimmer, Ramps, Trusses, Camping Lights, Ext. & Stepladders, Wooden Pulleys, Boat Gas Tank, **LG. SELECT. OF HAND & GARDEN TOOLS**, Power Mower, Spreader.

1/2 HP CAMPBELL AIR COMPRESSOR, HOMELITE & REMINGTON CHAIN SAWS, CHAMPION 20" DRILL PRESS W/CHUCKS, Miller Welder, Table Saws, Elec Motors, Elec. Drills, Monkey Wrenches, Ratchets, Saws, Hammers, Drill Press, Digging Iron, Hand Jack, Files, Pliers, Grinder, Trowels, Open & Box End Wrenches, Elec. Cords, Craftsman Drill/Sander, Organizer w/Nuts - Bolts & Washers.

Lots of items too numerous to mention
 No Out-of-State Checks • Not Responsible For Accidents • Items Sold As Is • Food Served
Sale By: Paul & Mary Rankin
MILLER & SIEGRIST AUCTIONEERS
 (717) 687-6857 AU-1723L



Location: 276 Blue Rock Rd. (Rt. 999) Millersville, Pa. From Millersville Rt. 999 West approx. 1 mi. to property on left. Lanc. Co.

FURNITURE - PERSONAL PROPERTY - ANTIQUES
 2 pc. Cherry Bedrm Suite; 3 pc. Bedrm. Suite; 2 Marble Top Tables; Oak Meat Cutting Table; 2 Door Oak Wardrobe; Mahogany Chaffero; Empire Bureau w/Wood Drawer Pulls; Oak Library Table; 3 Oak Dining Rm. Chairs; Oak Rocker; Decorated Keyhole Plank Bot. Rocker; Victrola; Marble Top Table; Nursing Rocker; White Treadle Sewing Machine w/Oak Cabinet; 2 Plank B. Chairs; 2 Drawer Oak Dining Rm. Server; Grained Jelly Cupboard; Wooden Highchair; Doll Canopy Bed; Handmade Doll House; Tin Doll Highchair; Metal Child's Stove; Shirley Temple 27" Doll; Shirley Temple Scrapbook; Other Shirley Temple Books; Shirley Temple Frock; 1958 & 1966 12" Barbie Dolls; Barbie Wardrobe & Bedding; Cabbage Patch Min. Dolls; Assortment of Teddy Bears; Kellogg's Corn Flake Dolls; Mechanical Bear; Old Horse Toys; Child's Tin Teaset in Box; 1931 Toy Horse on Trailer & Other Old Toys; Elect. Lionel Train - 2 Diesels & 1 Steamer - 1940-50's; Crocks; Egg Baskets; Kids Scooter; Express Wagon; Sprinkling Cans.

GLASSWARE - Hull Planters; McCoy Cookie Jar; McCoy Frog & Others; Fiesta Pitcher & Cups; Lefton Pcs.; Nippon; Johnson Bros.; Carnival; Indv. Salts; Crackle Glass; Glass Baskets; German; 7 pc. 22 K Gold Cake Plate Set; Japan 25 Pc. Tea Set; Smiley Pig Pitcher & Creamer; P.B. Glasses; Knowles Plates; Italy Tin Tea Set; Tin Fruit Bowls; Repo Cheese Mold; Bitner Candy Tin - No Lid; 2 Qt. Tin Measure; Agate Funnel & Dipper; Child's Tin Sprinkling Can; Cast Iron Scottie Dog; White Agate Coffee Pot; Wood Match Holder; Lots Pictures & Frames; 20" Farm Dinner Bell; Old Champion Drillpress; Milk Cans; Coal Buckets; Moon/Star Lamp; Plus Numerous Other Items.

NOTE: A lot of Interesting Items To Be Sold To Highest Bidder. Food Stand.

Terms by
EARL & RUTH NEWCOMER
 717-872-2646

Auction Conducted by
 Randal V. Kline, Lloyd Kreider
 Roy Good Jr., Auctioneer AU#2116L #513L #499L
 717-445-4309

KLINE, KREIDER & GOOD
 AUCTIONEERS