

Farmers' Market Nutrition Program Distributes Funds

HARRISBURG (Dauphin Co.)
— On behalf of Gov. Tom Ridge, Acting Agriculture Secretary Samuel E. Hayes Jr. this week announced that over \$1.34 million will be distributed to Pennsylvania's women and children enrolled in the Farmers' Market Nutrition Program (FMNP) during July and August.

"This innovative program encourages the habit of eating fresh fruits and vegetables to nutritionally-at-risk pregnant mothers, nursing mothers and children ages three and four," said

Hayes. "Low-income families have been found to be deficient in vitamin A, vitamin C and fiber — nutrients provided by fruits and vegetables.

"This program is a wonderful opportunity to promote better health and increase support for Pennsylvania's 300 farm markets that support the Farmers' Market Nutrition Program."

Expectant mothers, nursing mothers, and children ages three and four, enrolled in the Special Supplemental Nutrition Program for Women, Infants and Children (WIC) are encouraged to apply.

Eligible individuals should contact their local WIC office or call 1-800-WIC-WINS (1-800-942-9467) for more information.

Public Auction Register

Closing Date Monday 5:00 P.M.
of each week's publication

Randall G. Renninger

Certified Public Accountant

Specializing in agriculture and construction industries

"We help business people discover ways to cut costs, save taxes, and be more profitable"

Call about our FREE seminars

100 Foxshire Drive, Lancaster, Pa. 17601
(717) 560-5720 ◊ Fax (717) 560-5721



Come... Come... Come to the 43rd Annual KEMPTON COUNTRY FAIR

Friday through Sunday

JUNE 20 to 22

Friday, opens 5 p.m.

- COMMON GROUND - 7 and 9:30 p.m.
- NARVEL FELTS - 8:15 and 10:15 p.m.
- Tractor Pulls, 6 p.m.

Saturday, opens 11 a.m.

- BUBBLES THE CLOWN, 3 p.m.
- SAN ANTONIO ROSE, 4 p.m.
- GARY NICHOLS, 6 p.m. and 9:15 p.m.
- BILLY 'CRASH' CRADDOCK, 7:15 and 10:15 p.m.
- Children's Day, 1 to 4 p.m.
- Mountain Madness Off-Road Races, 12 noon
- Figure 8's; 6 p.m. • Drag Races

Sunday, opens 11 a.m.

- THE HAWKS, 4 and 6:30 p.m.
- THE OUTLAWS, 5:15 and 8:15 p.m.
- WEEU 16 mile Bicycle Race, 9:00 a.m.
- Miss Kempton Fair Scholarship Pageant, 12 noon
- Mountain Madness Off Road Races, 12 noon
- Children's Pedal Tractor Pull, 1 p.m.

Every Day

- Quilt Show and Sale
- The Midway
- Rides • Petting Zoo
- Great Food • Bingo
- 100 Exhibitors
- Covered Stage and Seating Area
- Free Entertainment
- Rain or Shine

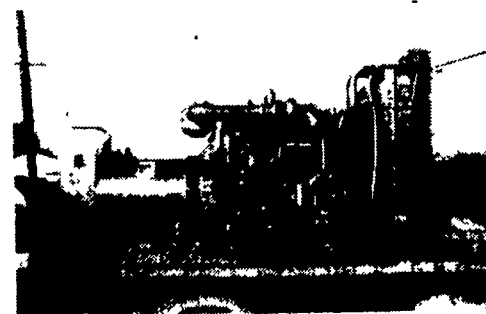
ADMISSION:

- Friday and Saturday, \$4.00 Per Person; Children 6 to 12, 1/2 price; Under 6, Free. FREE PARKING

KEMPTON COMMUNITY CENTER

Located in Kempton, 5 miles north of I-78 on Rt. 737 or Rt. 143.
From 309, south on Rt. 143.
Phone (610) 756-6030 Durning Fair (610) 756-6444

MARTIN MACHINERY



GENERATORS

- Sales ★ Service ★ Rentals
- ★ Complete Generator Systems
- ★ PTO ★ Portables ★ 2-1600 KW
- "We Service It If You Have It And Sell It If You Need It"

34 W. Mohler Church Rd.
Ephrata, PA 17522

Tel: 717-738-0300
Fax: 717-738-4329



THE GRAND NATIONAL AYRSHIRE SALE



SATURDAY JUNE 21, 1997 12:30 PM

LAMPETER FAIRGROUNDS, LANCASTER, PA

Pre-sale Barbecue 11 A.M. (Reservations Needed)

Featuring 38 consignments selected from top herds in the United States and Canada.

The selection offered at this sale will be hard to equal at any other. Make this one your chance to take home an outstanding animal. A rare opportunity to purchase top genetics from the Best of the Breed.

Production Records on dams 20,000 lbs. and up Classification scores 85 pts. plus on many
Many of these consignments to be fresh for the sale, a lot of potential show prospects also.

featuring top sires in the breed to be represented in these consignments, some of the sires include, Ardrossan Farms EV Kate's Trident, Maple Dell Soldier, St. Cesaire Papillon, Bonnie Brae Heligo, Legace Comet, Covey Farms Rebate, Blackadder Isle Milkman, Brow-Ayr Vitality's Ramses and many others

Consignors Include:

Maple Dell Farm
Laneway Farm
Forest Park
Mode Bros
Owl Canyon
Palmyra Farm

Royal Flush Ayrshires
Wentworth Farm
Jack Miller
Wilshire Farm
Glenn Farm
Mueller's Ayrshires

Conebella
Maufair Acres
Hickory Grove Farm
Ayrdeil Farm
Robert Tolhurst
Neil Kittle

Del Acres
Millbrook Farm
Pinelane Farm
Anchor Mere
John Rodgers
Mike Zook

Delaware Valley College
String A Long Ayrshires
Rippling Brook Farm
Hidden Valley
Scott & Elsie Wolff

For more information and catalogs contact Earl E. Keefer

2022 Rt. 209
Millersburg, PA 17601
(717) 692-3738

Auctioneer
C. Sherman Allen
AU-1620-L

Pedigrees:
Neil Kittle

Conv. Headquarters
Willow Valley Resort
717-464-2711

Robert M. Billig Estate Public Auction Valuable 132 Acre Lehigh County Lynn Township Farm, 3-1/2 Acre Tract Of Open Pasture Land, 6 1/2 Acres Tract Of Open Farm Land, Farm Equipment, Household Goods, Tools, Antiques, Guns, Coins, 1976 Chevy Pickup, 1985 Oldsmobile Delta 88 Car, Ford 3000 Tractor, 2 Old Wood Wheel Farm Wagons, Early 2 Door Wardrobe, Original Red Paint, SAT. JUNE 21, 1997 AT 9:00 A.M.

Located Between New Tripoli and Kempton On Route 143, .08 Mile East Of Wanamakers Turn On To Allemaugel Road, Cross Bridge Turn Right On To Perry Long Road, Travel Approx. 1 Mile To Farm.

Real Estate - Tract No. 1 Consists of a 132+ or - Acre Farm Where On Is Erected A 2 1/2 Story Early Stone And Frame farm house, 1 st floor has kitchen, extra large dining room, large living room, powder room, 2nd floor has 4 bedrooms, full bath, full walk thru attic, full basement, oil h w/h, well water, (Home in good condition), large frame bank barn w/numerous other outbuildings, approx. 60 acres tillable, balance wooded w/ Ontelawnee Creek Running thru property This farm offers excellent hunting and fishing. Property has excellent scenic view and is nicely secluded

Note- This parcel is presently in Act 515

Tract No 2 consists of approx 3-1/2± acres of open pasture land This parcel borders Tract No 1

Tract No 3 consists of approx 6-1/2 acres± of open farm land w/frontage on Allemaugel Road and Donats and Peak Road, Located approx 1 mile East of Tract No 1 and is presently in Act 515

In Inspection To See Real Estate call Robert Arner at 717-386-4586 or Dennis Wagner at 610-562-4844

Terms - 10% down on day of sale, balance on or before 90 days.

Real Estate will be Offered at Tract No 1 at 12.00 p m

Household and Antiques

Item - 2 Oak Dresser, fancy oak sewing machine, oak drop front desk, old cradle, camel back trunk, oak C roll top desk, early table, maple bedroom suite, mahogany bookcase, poster beds, empire chest of drawers, living room suite, mahogany claw footed drop front desk, kneehole desk, dep furniture, Zenith floor model TV, gold gilded mirror, early stand, Grandfather clock, tea cart, 7 pc Kitchen set, mahogany close front hutch, mahogany open front hutch, refrigerator, electric stove, Maytag automatic washer and dryer, upright freezer, oak sq table w/claw feet, hoosier cabinet w/flour bin, 2-floor combination safes, 5 pc kitchen set, room size rugs, rag rugs, bear skin rug, air conditioner, old pictures and frames, R.S. German china, asst pots pans and dishes, blue swirl agate, cast iron fry pan, early milk pitcher, Lady head planter, large water jugs, crocks, jugs, many locks, drop leaf table, old was stand, oak server, wood clothes closet, spool cabinet, Sterling silver pcs

Farm Items - Ford 3000 gas tractor w/1200 front end loader w/2800 hrs, Woods 6" pull type rotary mower, N H 451 - 3pt 7" grass mower, C A Lutz builder Kempton four wheel wood wheel farm wagon, Rauch and Hanwork Builder four wheel wood wheel farm wagon, New idea ground drive manure spreader, 3 pc scraper blade, 1976 Chevy 1/2 ton pick up V8 standard shift 1 owner w/31,000 miles

1985 Olds Delta 88 Royal V8 auto loaded 1 Owner w/91,000 Miles, Anens 8 h p riding mower, Ford 3 pt 2 bottom plow, drag weeder, four wheel farm wagon, hammer mill, old box sleigh w/box body, mortise benches, cast iron hog and water troughs, cast iron butcher kettles, corn cracker w/motor, spit oak baskets, egg baskets, hand and garden tools, drop handle milk cans, old hanging scales, old bean scales, hand tools, butcher ladles, flails, wood feed chests, many new metal fence posts, wood wheel wheel barrow, old mill stone, aluminum extension ladder, chicken crates, corn sheller, wood rakes, oil jars w/carner, nice old Texaco oil and grease cans, anvils, wood tool boxes, slate tools, broad axes, platform scales, wood adv boxes, wagon jack iron wheels, grindstone, chain saw, wood ext ladder, horse hand plow, hand cultivator, many nice adv burlap bags, blue dec chicken waterers, old fishing equipment old fur stretchers, wood buckets, hunting supplies, Ammo

Guns - Parker Mod 640 E -410 double barrel, Win Mod 12 -20 ga, Win Mod. 12 - 16 ga vent rb, Win Mod 12-12 ga, Rem Mod. 760 - 30-06 Pump Savage Mod. 39-243 Win w/scope, Win 22 Cal; Rem Mod 141-30 Rem

Coins - Many silver half dollars, Indian head pennies, silver dollars,

Many other items too numerous to mention

Note- This is a good Country Estate Auction We Will Be Selling With Two Auctioneers Most Of The Day

Terms: Cash or Acceptable Check. No Out Of State Checks. Travelers Checks Accepted

Estate of: Robert M. Billig
Executrix: Alice S. Lauck and Irene A. Beibleheimer
Attorney: A. Joseph Antanavage

Auctioneers;
Robert A. Arner AU-000024-L
Dean R. Arner AU-3421-L
717-386-4586
Dennis F. Wagner AU-001427-L
Tracy L. Wagner AU-003172-L
610-562-7445

Refreshments